



SUPERIOR CLASS A OFFICE OPPORTUNITY, PREMIUM LOCATION

NEWMARK



TIME EQUITIES INC.

EXCLUSIVE AGENTS

Daniel Canvasser

248-350-8141

daniel.canvasser@nmrk.com

Mike Valant

248-357-6568

mike.valant@nmrk.com

J.P. Champine

313-622-3634

jp.champine@nmrk.com



TRAVELERS TOWER I

Spaces Available from 1,452 – 48,728 SF

TRAVELERS TOWER II

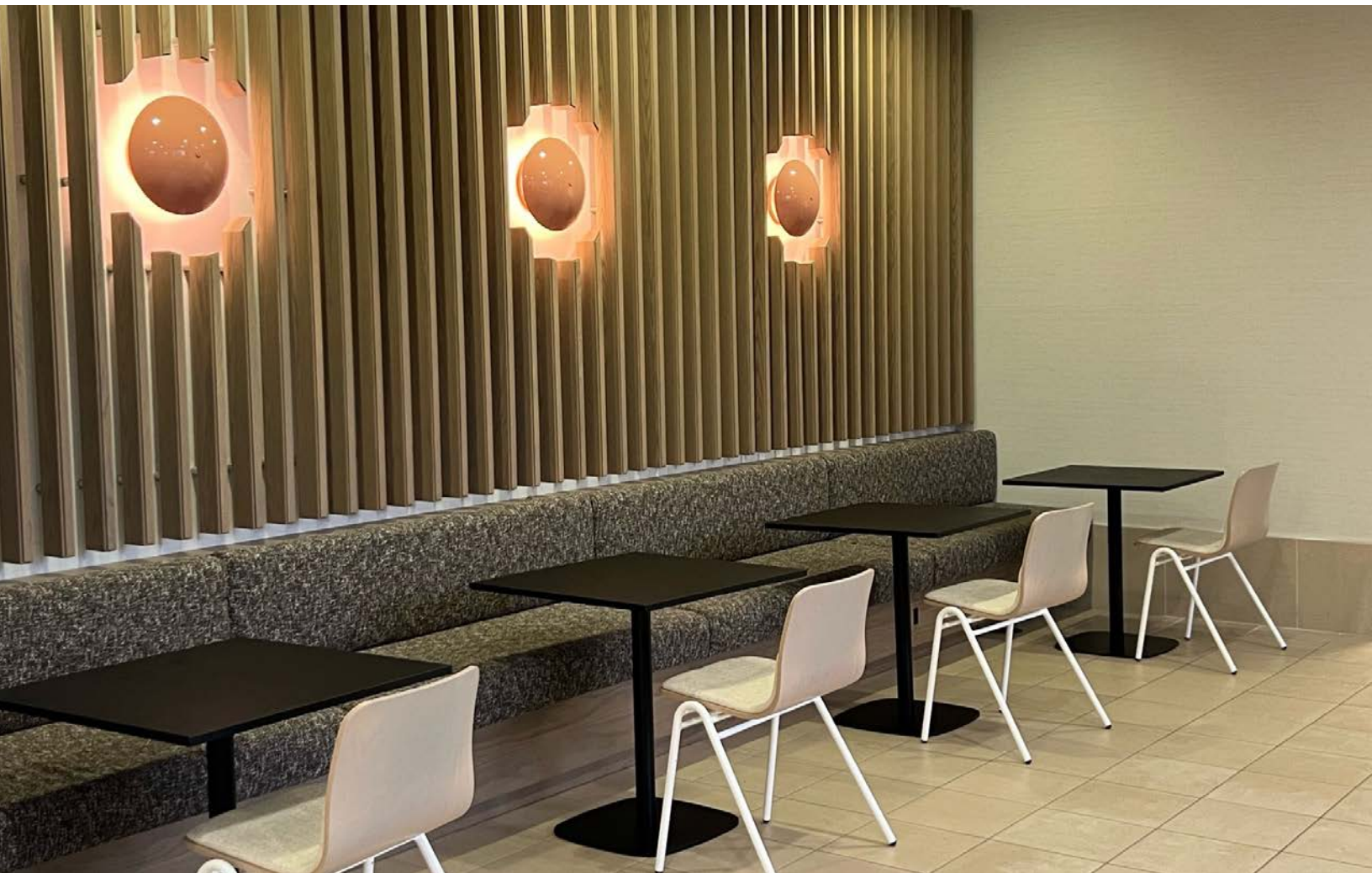
Spaces Available from 33,786 SF - 168,930 SF

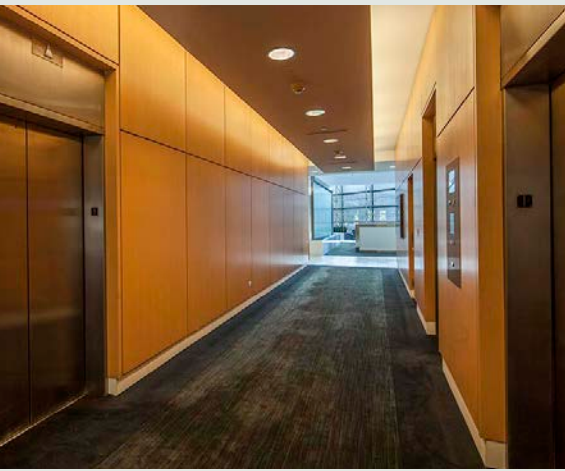
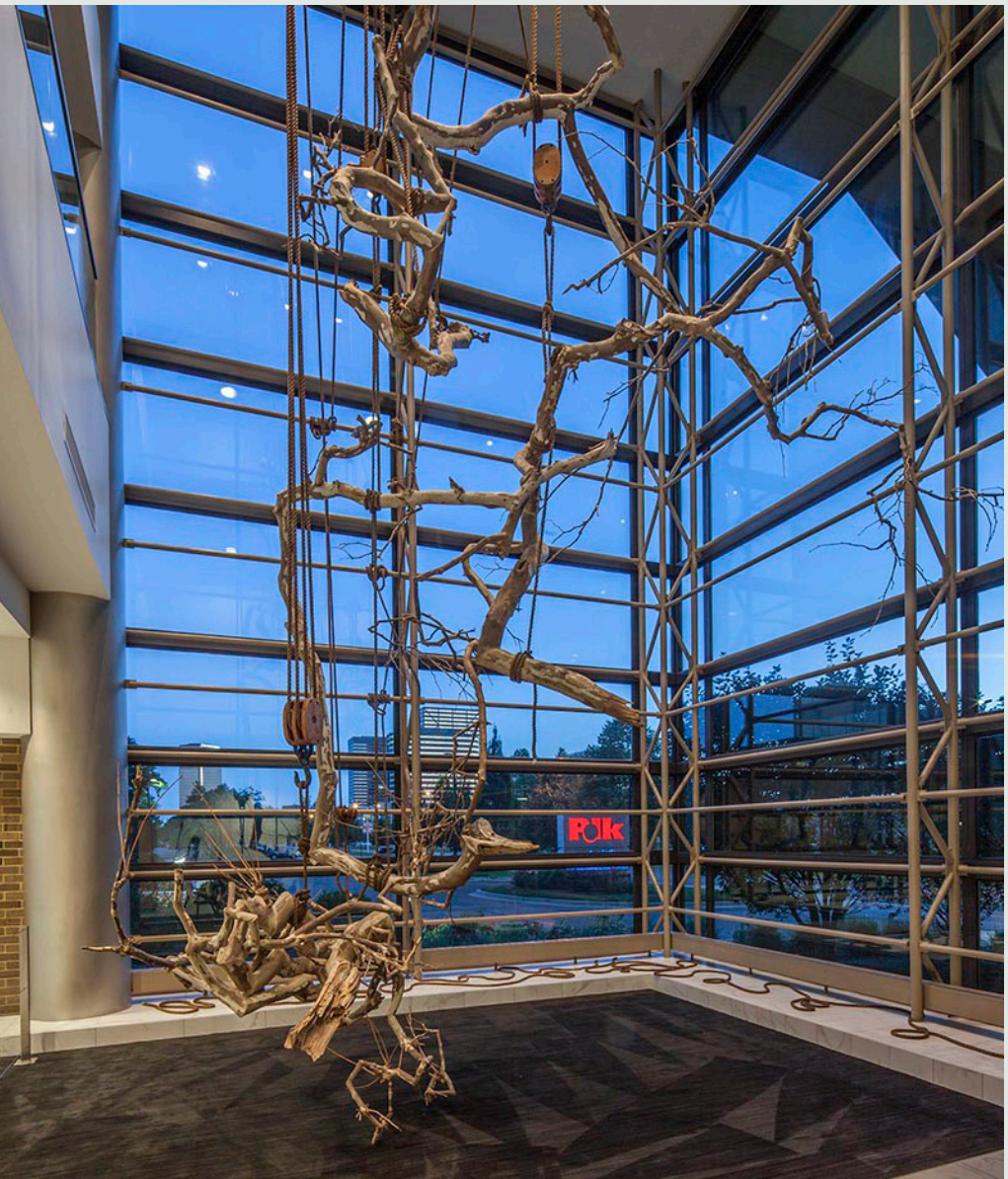


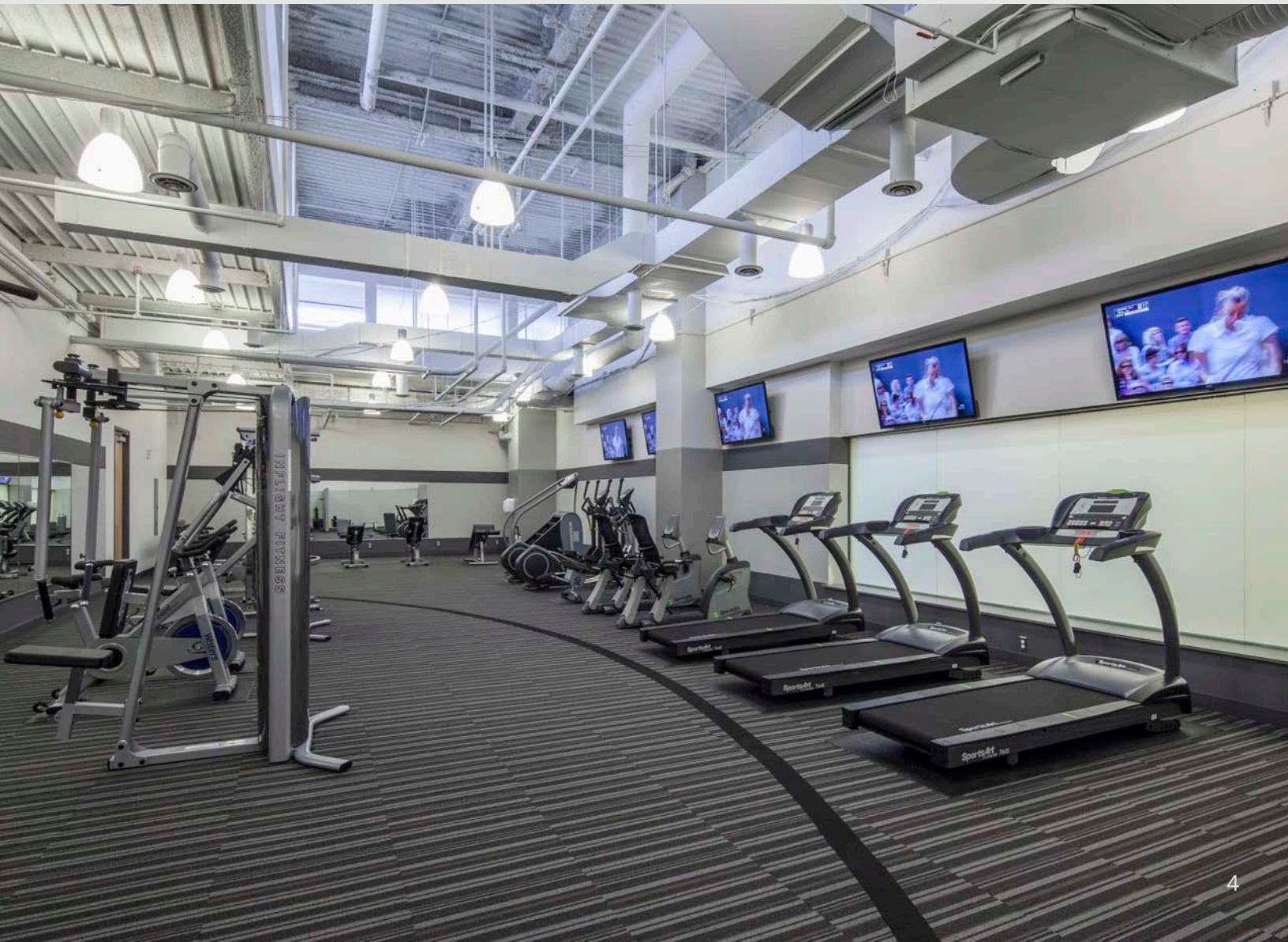
Building Features

- Completed capital improvements include a new fitness center, lobbies, cafe renovation, elevator modernization, HVAC upgrades, signage and artwork
- Major renovations completed including common area corridors and restrooms
- Covered parking and ample surface parking
- Onsite retail includes national fast-casual restaurants Tropical Smoothie Cafe, Captain Jay's, Poke Poke, Lefty's Cheesesteak, and Just Baked
- On-site property management, security, dry-cleaning, conference center, sundry shop, flower shop, tenant lounge, and outdoor patios with seating

Procuring broker shall only be entitled to a commission, calculated in accordance with the rates approved by our principal only if such procuring broker executes a brokerage agreement acceptable to us and our principal and the conditions as set forth in the brokerage agreement are fully and unconditionally satisfied. Although all information furnished regarding property for sale, rental, or financing is from sources deemed reliable, such information has not been verified and no express representation is made nor is any to be implied as to the accuracy thereof and it is submitted subject to errors, omissions, change of price, rental or other conditions, prior sale, lease or financing, or withdrawal without notice and to any special conditions imposed by our principal.

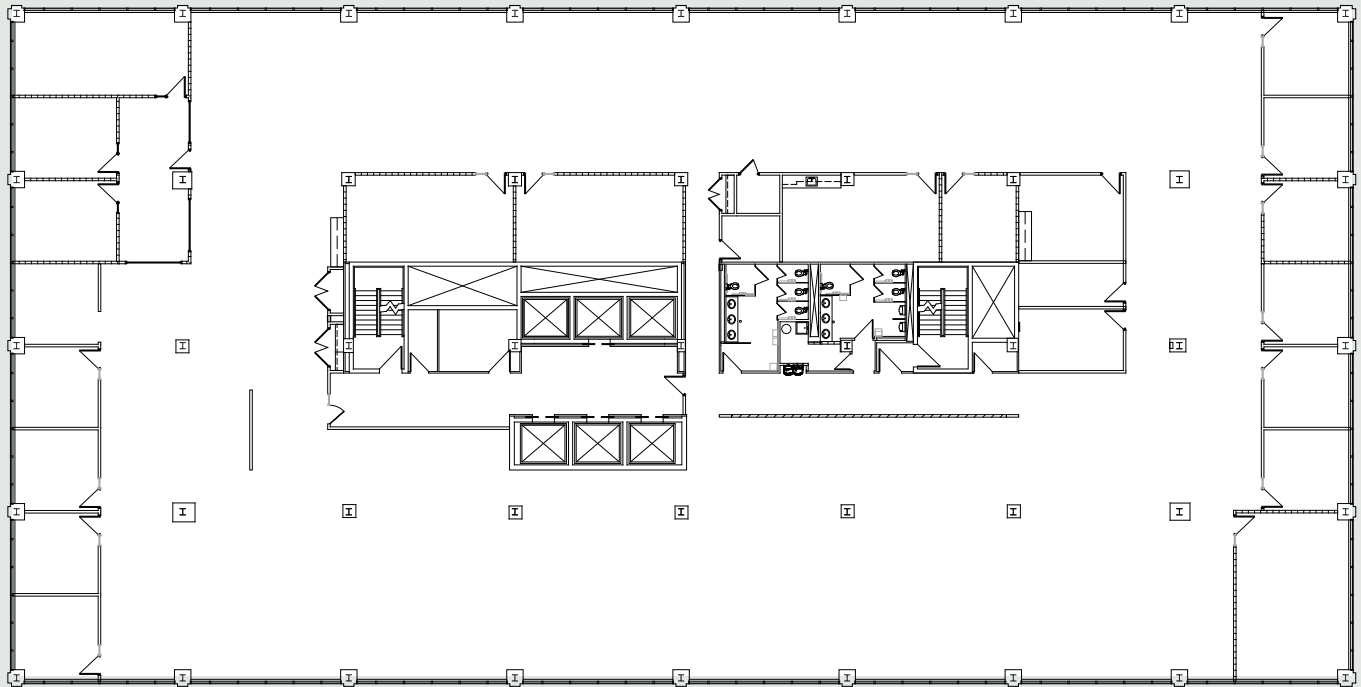




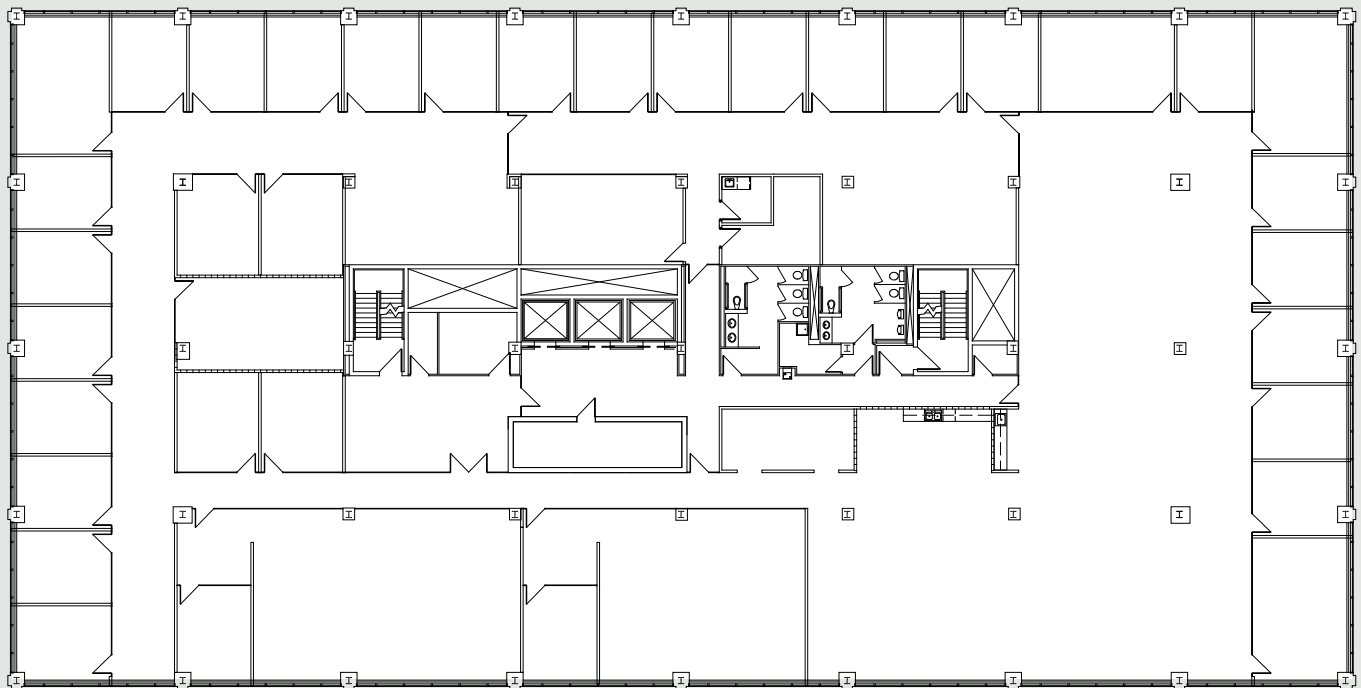




Travelers Tower I

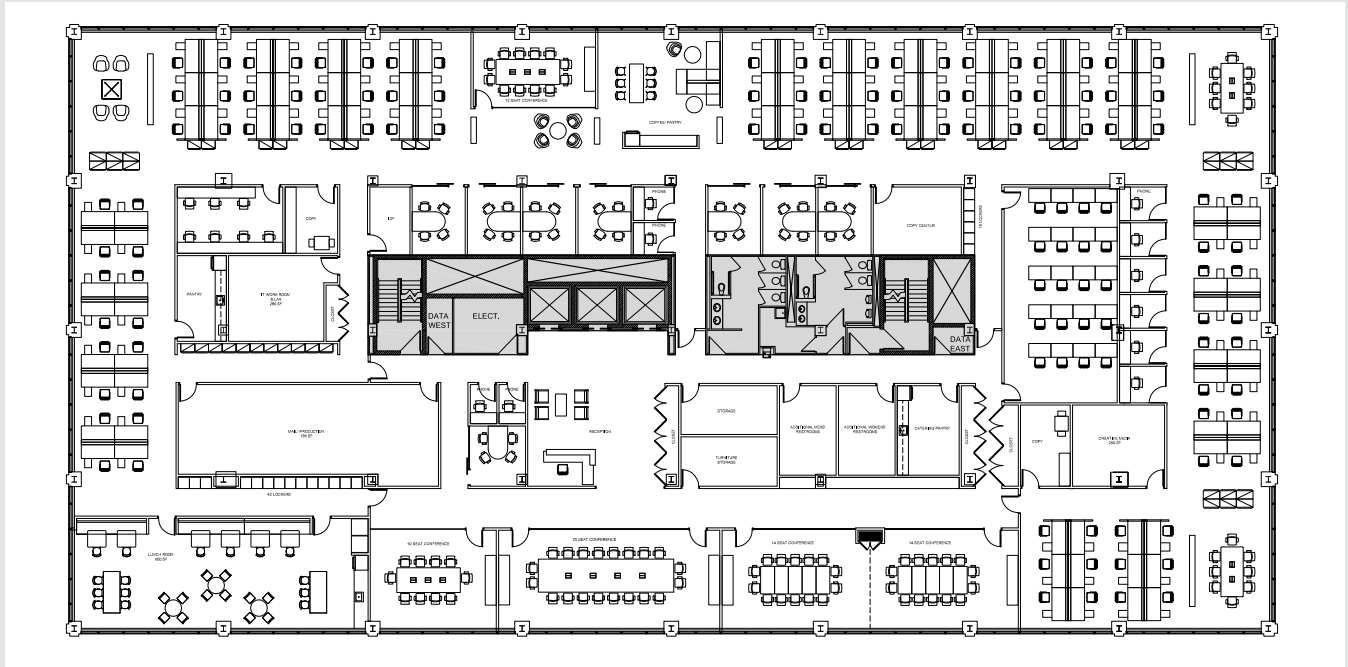


2ND FLOOR | 24,354 RSF



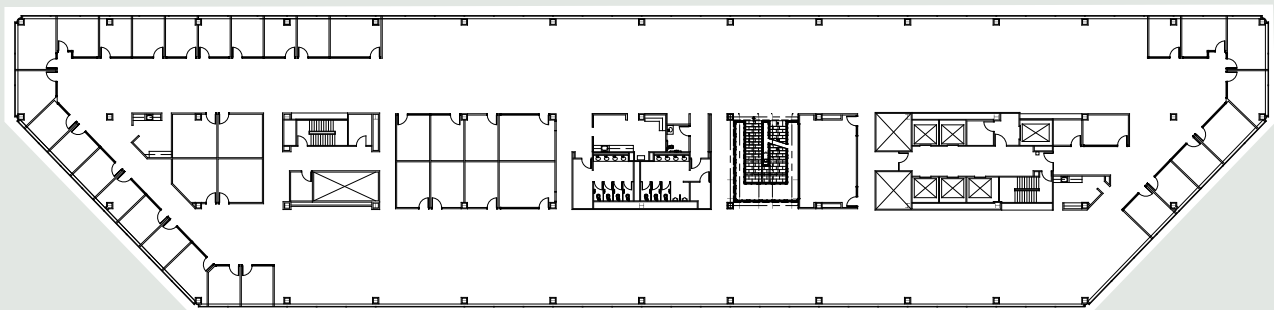
13TH FLOOR | 21,712 RSF

Travelers Tower I



14TH FLOOR | 21,447 RSF

Travelers Tower II



STE. 1200 | 33,271 RSF

FOR LEASING INFORMATION CONTACT

Daniel Canvasser
248-350-8141
daniel.canvasser@nrmk.com

Mike Valant
248-357-6568
mike.valant@nrmk.com

J.P. Champine
313-622-3634
jp.champine@nrmk.com