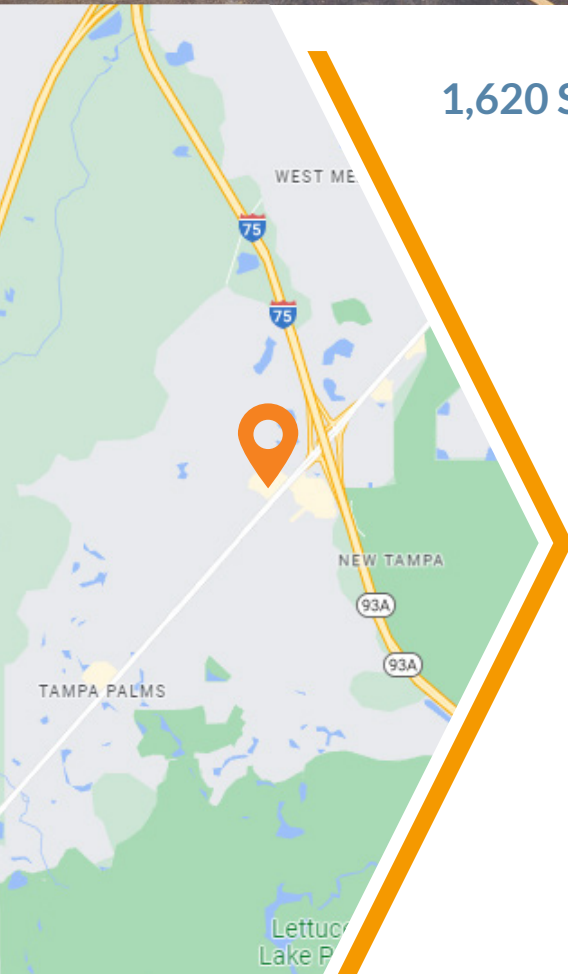


THE POINTE AT TAMPA PALMS

17002-17030 Palm Pointe Dr., Tampa, FL 33647



Photo property of CoStar



1,620 SF END-CAP FOR LEASE IN AFFLUENT TAMPA PALMS

- » Parking spaces limited; no fitness or restaurant usages permitted
- » Located at a dominant intersection with multiple access points
- » Affluent Tampa Palms trade area, with average household income of over \$116,483 within a 3 mile radius
- » Dense, national retailers surrounding site
- » 2022 Traffic: 49,464 AADT Bruce B. Downs Blvd.

| Demographics | 1-mile | 3-mile | 5-mile |
|--------------------|-----------|-----------|----------|
| 2023 Population | 6,961 | 31,768 | 146,643 |
| Daytime Employment | 4,955 | 14,490 | 75,460 |
| Average HH Income | \$119,654 | \$116,483 | \$87,295 |
| Median Age | 34.7 | 36.2 | 36 |

Leasing Contact: Wanda De Boer | Managing Director - Retail Services
(Cell) 813-690-3020 | (Office) 813-269-0702 | wdeboer@rpm-realty.com



THE POINTE AT TAMPA PALMS

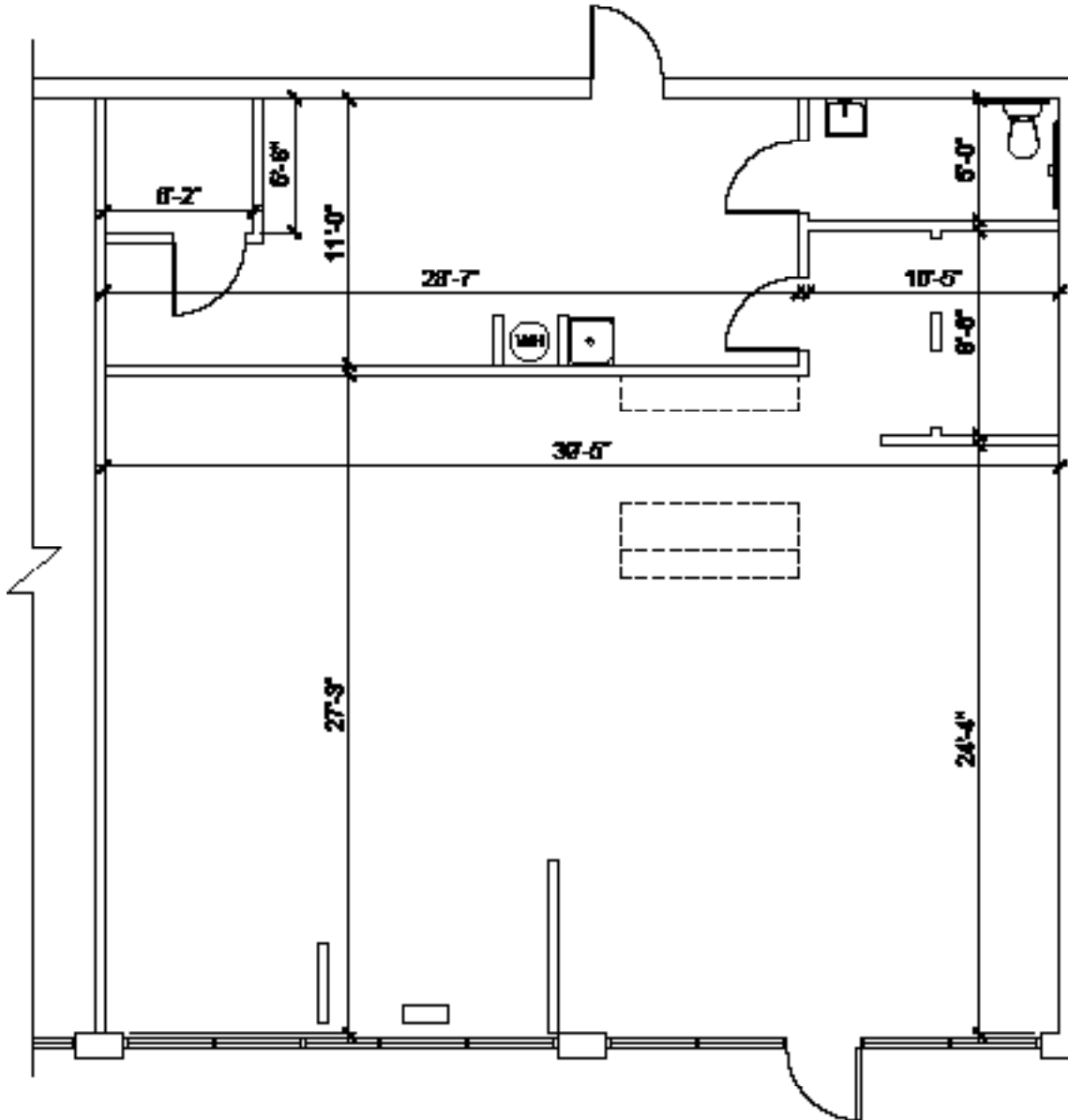
17002-17030 Palm Pointe Dr., Tampa, FL 33647

| SUITE | TENANT | SF |
|-------|-----------------------|-------|
| 1 | Ciccio Cali | 2,400 |
| 2 | Cutaway Tattoos | 1,200 |
| 3B | Lease Pending | 1,125 |
| 3A | Palms Pharmacy | 1,824 |
| 4-5 | Koizi Hibachi & Sushi | 5,758 |
| 6 | The Bean Bar | 1,200 |
| 7 | Joa Express, FL | 1,200 |
| 8 | Orchid Thai | 1,000 |
| 9 | Lease Pending | 1,350 |
| 10-11 | Happy Nails & Spa | 1,600 |
| 12 | AVAILABLE | 1,620 |



The information contained herein was obtained from sources believed reliable; however, RPM Realty Management, LLC makes no guarantees, warranties, or representations as to the completeness or accuracy thereof. The presentation of this property is submitted subject to errors, omissions, change of price or conditions prior to sale or lease, or withdrawal without notice.





1,620 Total SF

The information contained herein was obtained from sources believed reliable; however, RPM Realty Management, LLC makes no guarantees, warranties, or representations as to the completeness or accuracy thereof. The presentation of this property is submitted subject to errors, omissions, change of price or conditions prior to sale or lease, or withdrawal without notice.

