



· 4,945 sq ft Retail/Office Building

· **3,266 sq ft Retail/Office Space Available:**

~**1,623 sq ft Main floor:** One large area which steps up half a floor to another sizable room. Features include: Keypad entry, Built-in surround sound, fresh paint throughout, Security cameras, Galvanized panel accent wall, new mixed lighting, new handrails, and one bathroom

~**1,643 sq ft Second floor:** Spacious office/retail space which includes a large, elevated storage area. Gorgeous new hardwood flooring, and fresh paint. Utility sink (or 2 washer hookups) and 2 dryer hookups available

~**1,271 sq ft Basement:** Separate entry, one large space, complete with 2 utility sinks and 1 bathroom. Available with 60 days notice

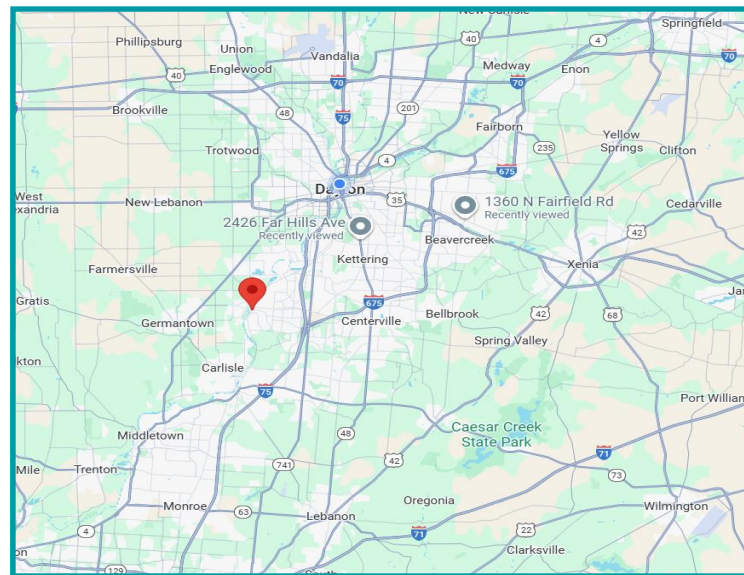
· **408 sq ft Office Space Available:**

Separate entry, one quaint waiting area, 1 bathroom, 2 offices. Available with 30 days notice.

Key Features:

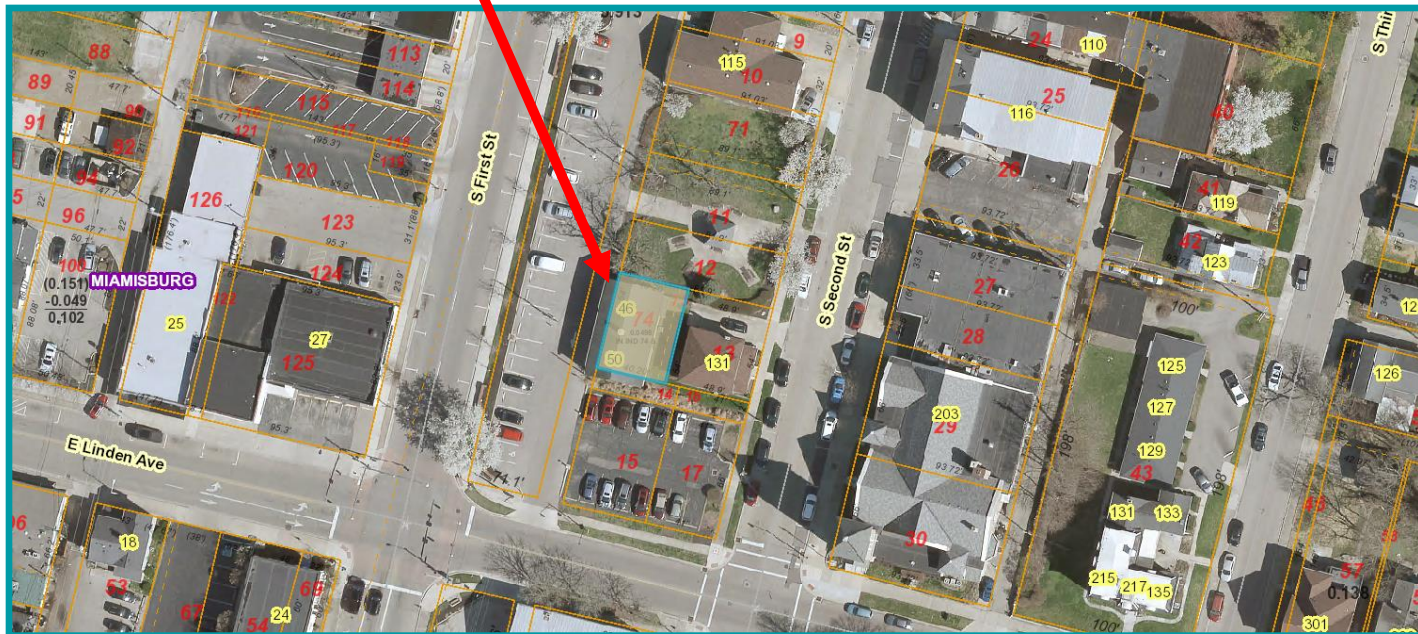
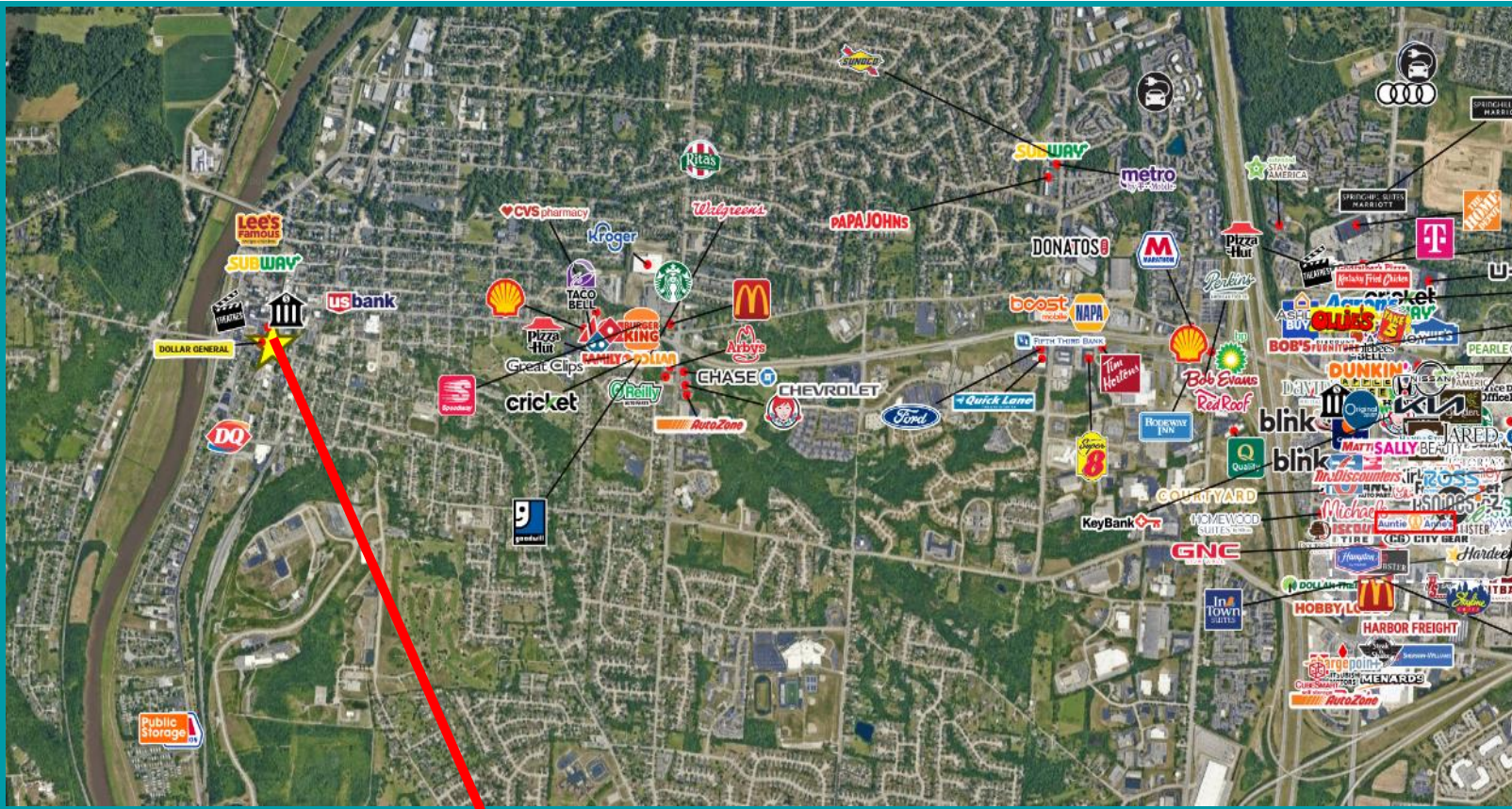
- Turn-key commercial property
- Located within a DORA in vibrant Miamisburg
- Prime location at the busy intersection of S 1st St & E Linden Ave within the Heart of downtown Miamisburg's business district with HIGH FOOT TRAFFIC
- 12 parking spaces plus excellent on-street parking
- For Lease - Negotiable

Miamisburg Gem: Modern Office + Chic Farmhouse Retail Building For Lease



**For More Information,
Please Contact:**

Bre Brown | Advisor
Mobile: 937.815.0087
brebrown@equity.net



DEMOGRAPHICS	1 Mile	3 Miles	5 Miles
Population	6,674	30,411	86,298
Average HH Income	\$106,017	\$109,925	\$107,718
Daytime Employee Population	2,545	12,934	40,462

Retail/Office Pictures



Office Pictures



Effective on 5/5/23, Miamisburg's DORA will be 7 days a week, 11:00am-11:00pm

So, what is a DORA?

DORA stands for Designated Outdoor Refreshment Area. This is a specific area, spanning several streets, where patrons can purchase alcoholic beverages from participating businesses and then take those drinks outside to enjoy. With a DORA beverage, you can explore Miamisburg, its retail establishments, or enjoy your evening in Riverfront Park. See the map below for the designated area in Miamisburg.

