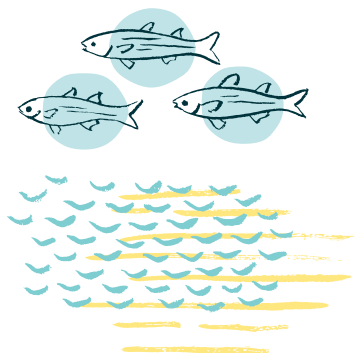


A gathering place for Waipahu:

True to its roots, welcoming everyone to meet, share, and connect.



Currently in the planning phase, this family-friendly community will celebrate Waipahu's rich and diverse history while serving as a place to build new connections—to learn from, care for, and enjoy the place we call home.



Residents and visitors will enjoy a vibrant mix of small-scaled shops, eateries, residential options, and community gathering spaces.



**keawalau**
AT WAIPAHU

Located on 3.8 acres of Kamehameha Schools lands in the heart of Waipahu, this proposed transit-oriented development by Highridge Costa and the AHED Foundation will help to alleviate O'ahu's housing shortage with approximately 500 new affordable (60% of Area Median Income) mixed-use rental units for kūpuna and 'ohana.

INSPIRED BY THE MANY AWA (BAYS OR "LOCHS") OF PU'ULOA (PEARL HARBOR), KEAWALAU INVOKES A DEEPER CONNECTION OF PEOPLE AND PLACE. IT BRINGS TO MIND IMAGES OF AN INTERCONNECTED SYSTEM OR MULTIPLE PLACES THAT COME TOGETHER TO CREATE A SPACE RICH IN RESOURCES.



**Kamehameha
Schools**



WHERE WAIPAHU COMES TOGETHER

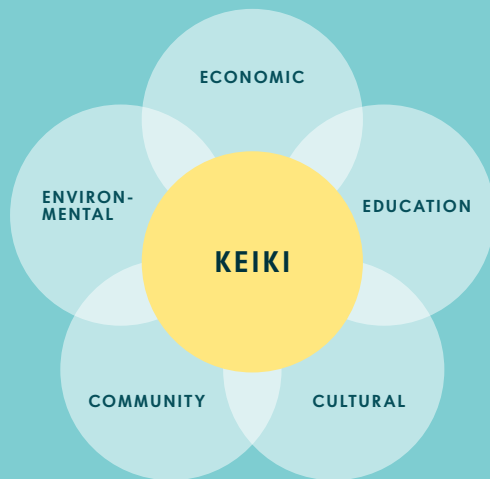
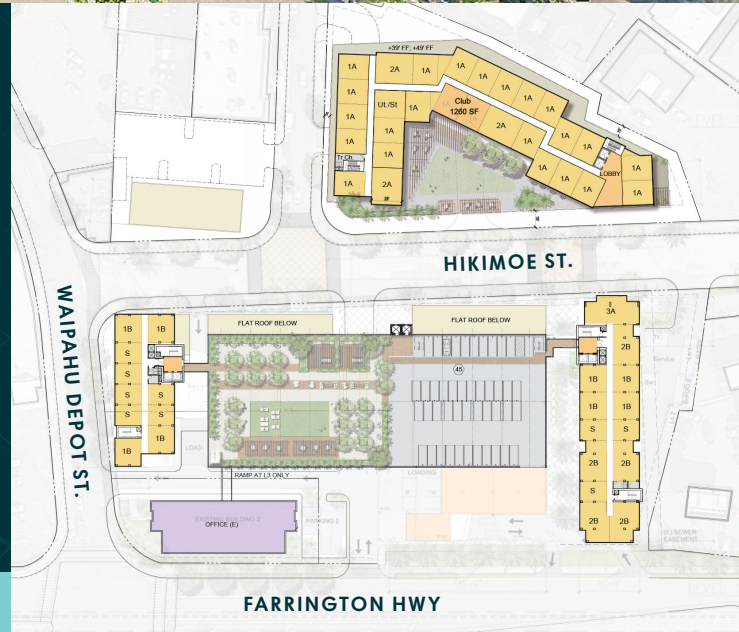


Approximately 500 affordable homes

- ▶ ALL UNITS ARE 60% OF THE AREA MEDIAN INCOME AND BELOW
- ▶ APPROXIMATELY 100 KŪPUNA RENTAL UNITS
- ▶ APPROXIMATELY 400 'OHANA RENTAL UNITS

Over 50,000 sq. ft

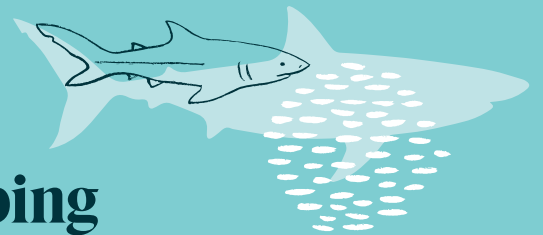
OF SHOPS, SERVICES AND RESTAURANTS



KAMEHAMEHA SCHOOLS STEWARDS 'ĀINA PAUHI BY BALANCING RETURNS ON FIVE VALUES: COMMUNITY, CULTURE, ECONOMICS, EDUCATION AND ENVIRONMENT.

'ĀINA PAUHI REFERS TO ALL LANDS STEWARDED AND HELD IN TRUST BY KAMEHAMEHA SCHOOLS, INCLUDING LANDS WITH AGRICULTURAL, CONSERVATION, RESIDENTIAL AND COMMERCIAL USES.

Hawaiian Placekeeping



Reframing the commonly known term "placemaking" from an indigenous lens, Hawaiian Placekeeping prioritizes cultural histories and knowledge, utilizes holistic measures of wellness, and engages community through process, dialogue, authenticity, and new aesthetics.

The goal is to contribute to thriving communities by creating spaces that are grounded in cultural identity, connected to our shared recent history, and invested in an abundant future for all.