

PROGRESS PARK

13351 Progress Boulevard | Alachua, FL



Office, Warehouse & Manufacturing Space For Lease



The 9,000 SF facility features 7,500 SF of climate-controlled warehouse with high ceilings, mezzanine storage, and three insulated 12' x 10' roll-up doors. The front office/showroom is bright and welcoming, while the manufacturing/assembly area offers an epoxy floor, ample power, and an interior roll-up door connecting to the warehouse.



Located in Alachua's life science corridor and surrounded by dozens of businesses that specialize in biotech, life science and technology as well as the Sid Martin/UF Innovate Biotech Incubator, one of the leading biotech incubators in the world.



The property is located on the recently completed San Felasco Parkway creating easy access to Highway 441 and I-75.



\$13.00 SF/YR NNN

Get more information

Rick Cain, CCIM, SIOR, Principal

352 505 7588

rick.cain@avisonyoung.com

**AVISON
YOUNG**

Property overview

Progress Park
Alachua, FL



About Progress Park

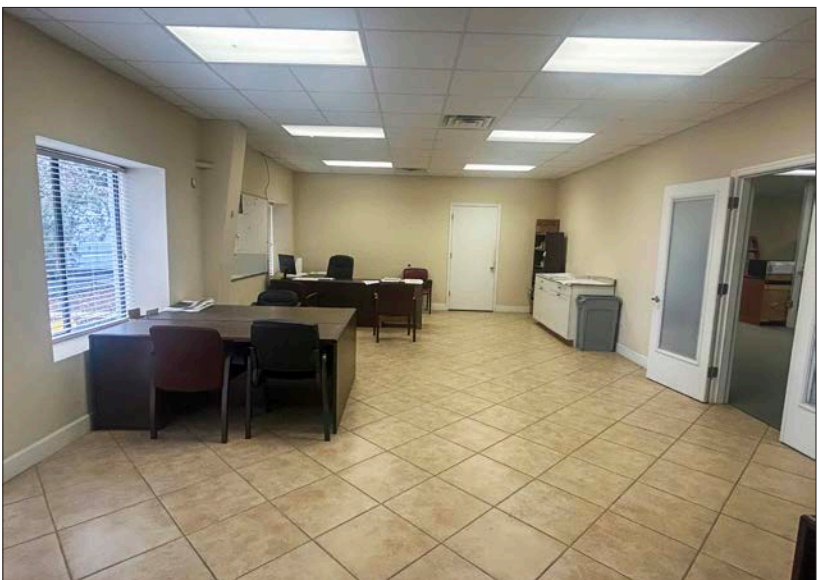
Progress Park is a 204-acre medical research and biotech facility with several hundred thousand square feet of office, lab and research and development space. The park was master planned and developed in cooperation with the University of Florida Foundation with the purpose of creating a research space where University licensed technology could grow and mature via with the help of private capital.

Today, Progress Park is home to about 30 companies that employ approximately 1,100 people.



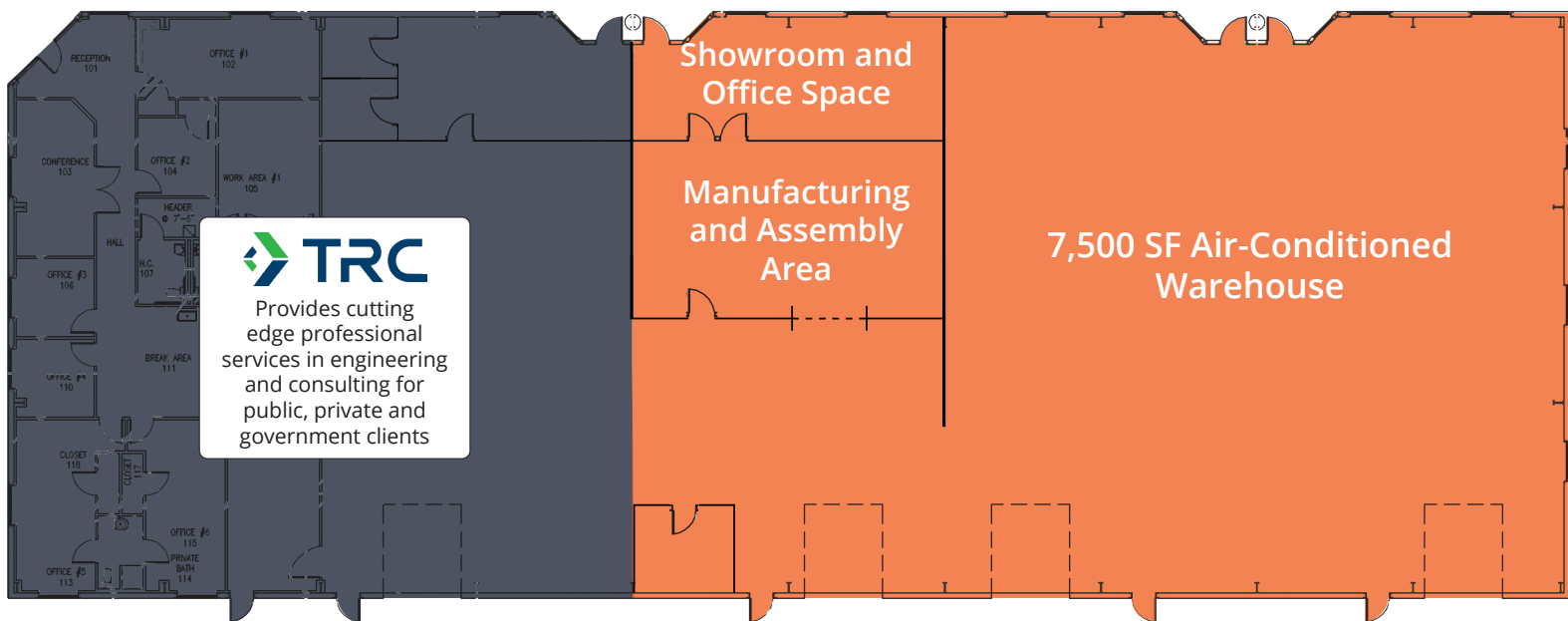
Photos

Progress Park
Alachua, FL



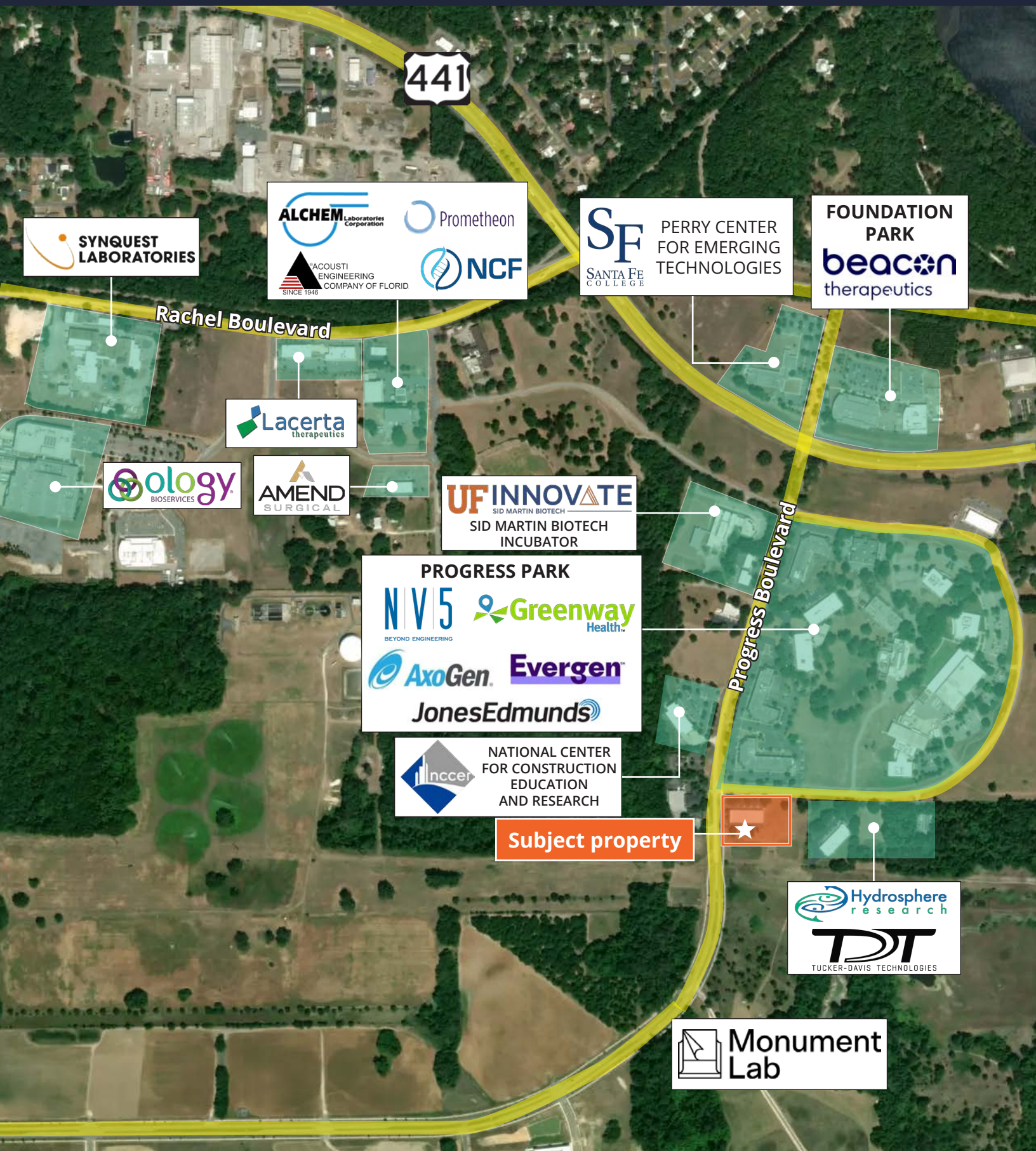
Floor plan

Progress Park
Alachua, FL



Nearby life science & biotech facilities

Progress Park
Alachua, FL



**SYNQUEST
LABORATORIES**

ALCHEM Laboratories Corporation
ACACUSTI ENGINEERING COMPANY OF FLORIDA
SINCE 1946
Prometheon
NCF

SF SANTA FE COLLEGE
PERRY CENTER FOR EMERGING TECHNOLOGIES

**FOUNDATION PARK
beacon
therapeutics**

Rachel Boulevard

**Lacerta
therapeutics**

BIOLOGY
BIOSERVICES

**AMEND
SURGICAL**

UF INNOVATE
SID MARTIN BIOTECH
SID MARTIN BIOTECH
INCUBATOR

PROGRESS PARK
NV5 BEYOND ENGINEERING
Greenway Health
AxoGen
Evergen
JonesEdmunds

NCCER
NATIONAL CENTER
FOR CONSTRUCTION
EDUCATION
AND RESEARCH

Subject property

Progress Boulevard

**Hydrosphere
research**
TDT
TUCKER-DAVIS TECHNOLOGIES

**Monument
Lab**



If you would like to discuss this further, please get in touch.

Rick Cain, CCIM, SIOR
Principal

352. 505. 7588

rick.cain@avisonyoung.com

Visit us online

avisonyoung.com

© 2025 Avison Young – Florida, LLC. All rights reserved.

E. & O.E.: The information contained herein was obtained from sources which we deem reliable and, while thought to be correct, is not guaranteed by Avison Young.

| 14491 SW 74th Drive, Suite 254 | Gainesville, FL 32607 |

**AVISON
YOUNG**