



Presented by:
Chris Sugden
Broker/Managing Partner
702-802-9227
chris@keyrealtysw.com
B.144229.LLC

MEDICAL OFFICE

730 N EASTERN AVE STE 100
LAS VEGAS, NV 89101

KRSW
COMMERCIAL REAL ESTATE

ABOUT THE PROPERTY

KRSW Commercial is pleased to present a medical office lease opportunity at 730 N Eastern Ave., Suite 100. This exceptional medical office space spans 3,000 square feet and is move in ready.

This office suite features four exam rooms with sinks, an X-Ray room, administrative office, 8 office/exam rooms, reception lobby, workstation, and private restrooms.

LEASE DETAILS

LEASE RATE	\$1.55 p/SF
MONTHLY CAM	\$0.10 p/SF
TOTAL MONTHLY RENT	\$4,950

SUITE DETAILS

SQUARE FEET	3,000
ZONING	C-1 (LIMITED COMMERCIAL)
YEAR BUILT	1999
YEAR RENOVATED	2024

KRSW COMMERCIAL - 730 N EASTERN AVE, SUITE 100

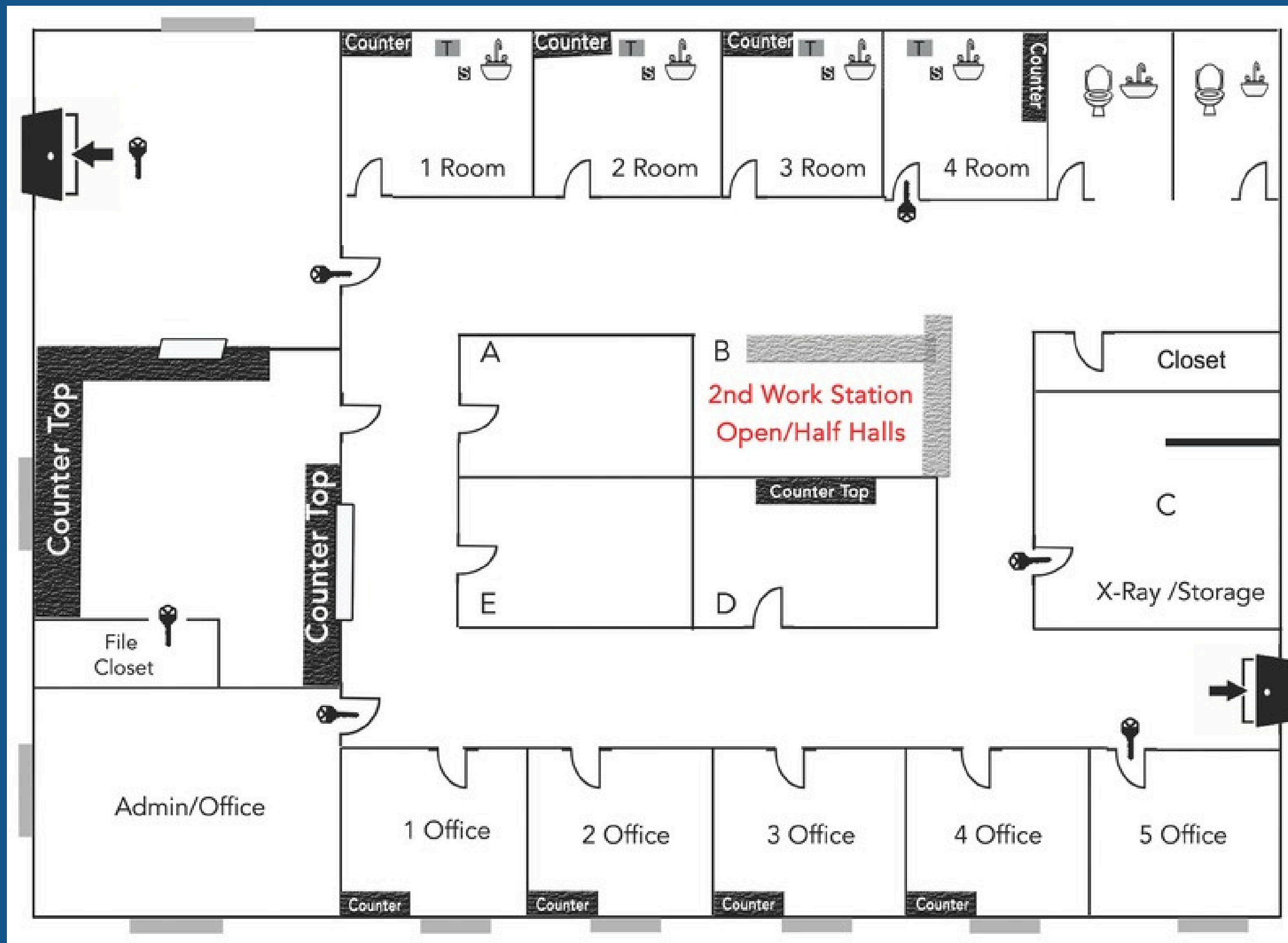


PHOTOS

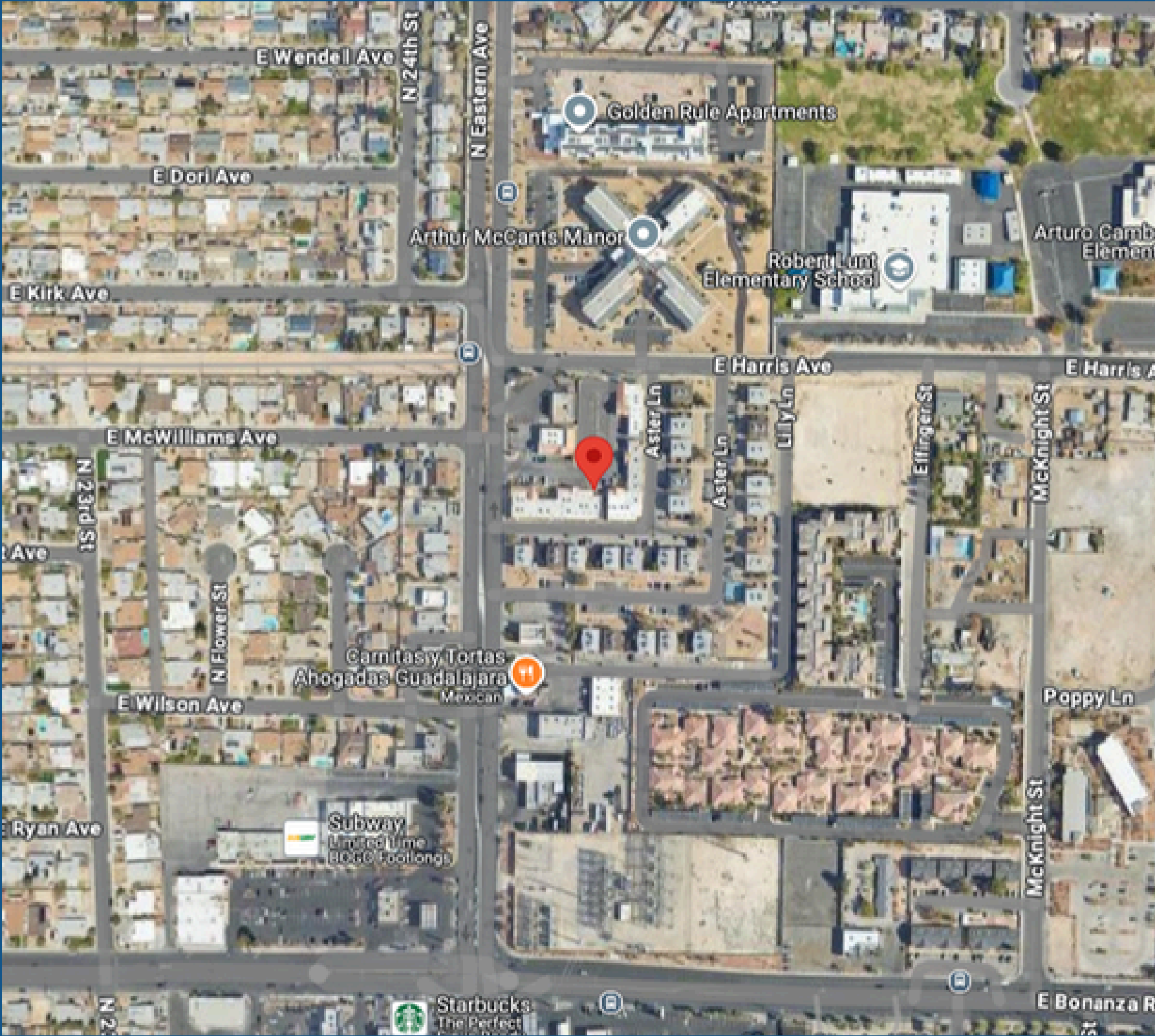
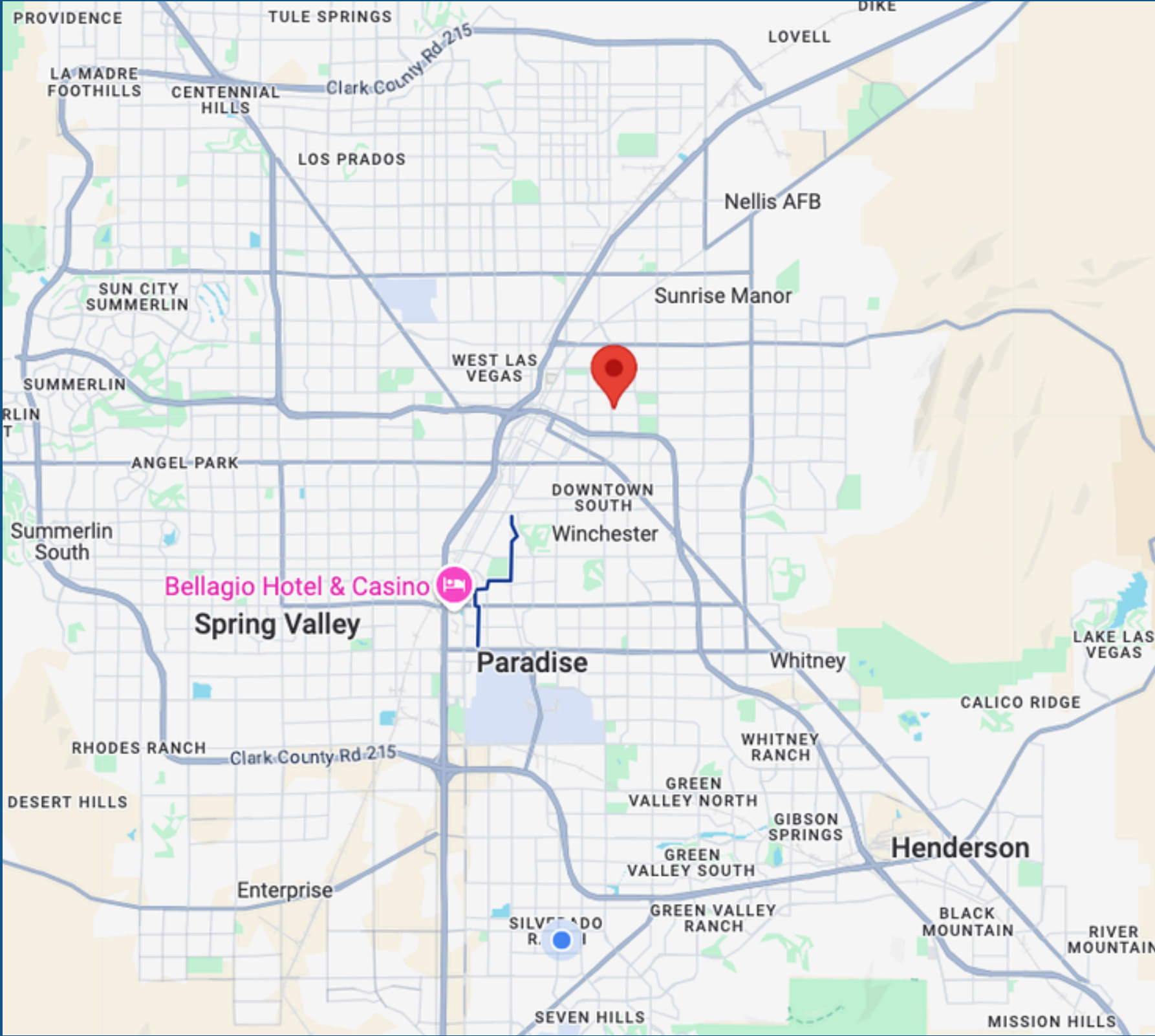


PHOTOS



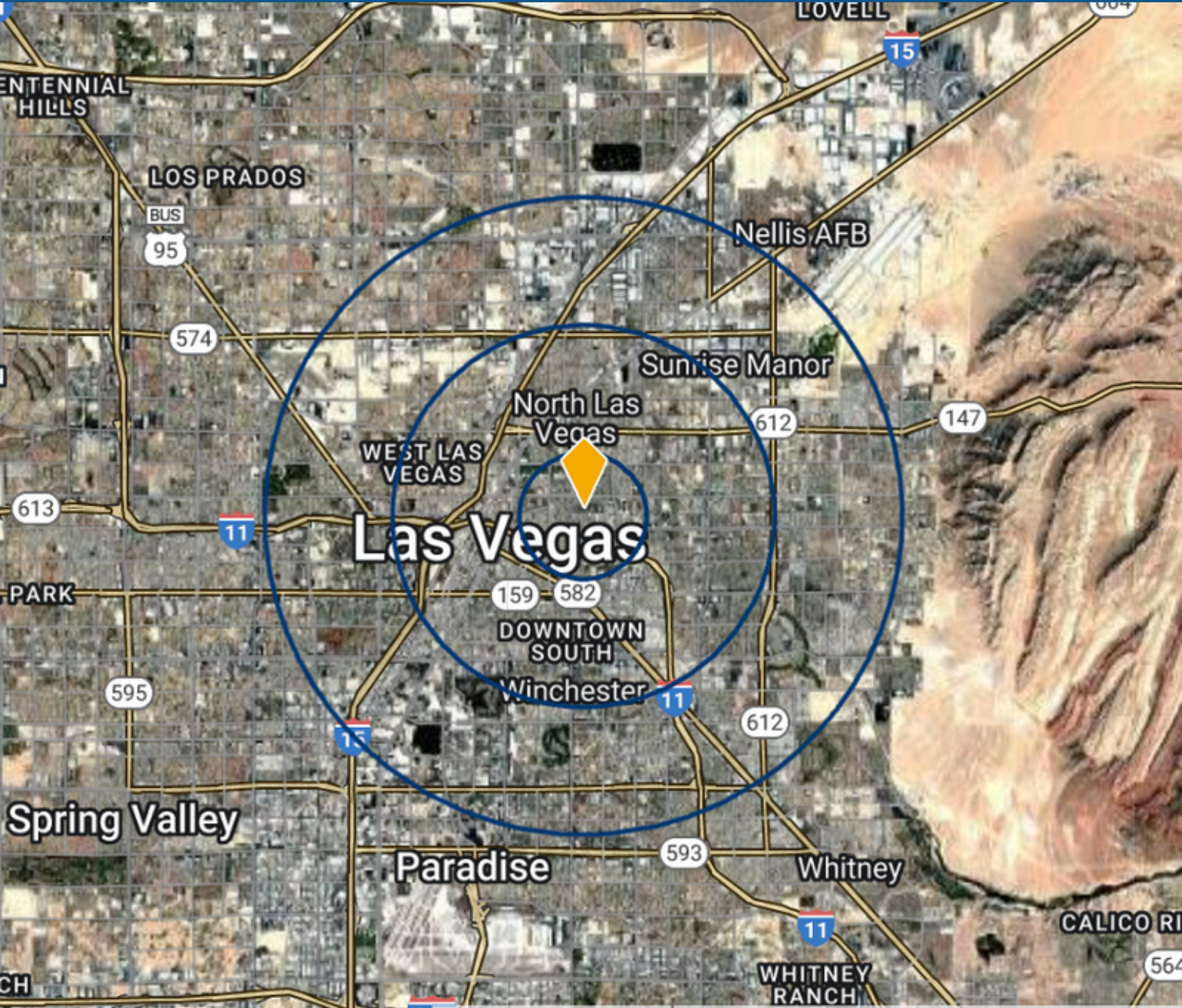


AREA MAP



DEMOGRAPHICS

POPULATION	1-MILE	3-MILE	5-MILE
2024 Estimate	30,029	238,270	554,133
HOUSEHOLDS	1-MILE	3-MILE	5-MILE
2024 Estimate	9,695	79,815	194,626
INCOME	1-MILE	3-MILE	5-MILE
2023 Avg Household Income	\$46,444	\$49,203	\$58,007
DAILY AVERAGE TRAFFIC			
EASTERN AVE	37,955		





Key Realty Southwest, LLC
B.144229.LLC

9890 S Maryland Pkwy
Suite 200A
Las Vegas, NV 89183

702-560-5904
<http://www.KRSWCommercial.com>

This offering, including any related digital marketing, contains selected information pertaining to the Property and does not purport to be a representation of the state of the Property, to be all-inclusive, or to contain all or part of the information which interested parties may require to evaluate a purchase or lease of real property.

Neither the seller or Key Realty Southwest, LLC, nor any of their respective directors, officers, Affiliates or representatives make any representation or warranty, expressed or implied, as to the accuracy or completeness of this Offering Memorandum or any of its contents, as to the financial performance of the property, or as to the condition of the Property, malfunctions or mechanical defects on the Property or to any improvements thereon, including but not limited to the material, workmanship or mechanical components of the structures, foundations, roof, heating, plumbing, electrical or sewage system, drainage or moisture conditions, air conditioning, or damage by the presence of pests, mold or other organisms, environmental condition, soils conditions, the zoning of the Property, the suitability of the Property for Interested parties intended use or purpose, or for any other use or purpose.