

CHARMING  
MALIBU  
RETAIL /  
OFFICE

# MALIBU, CA

NEAL  
GOLUB

LIC. 01023733  
+1 310 550 2667  
NEAL.GOLUB@CBRE.COM

RYAN  
GURMAN

LIC. 01972081  
+1 310 650 7545  
RYAN.GURMAN@CBRE.COM

**CBRE**









# SPACE DETAILS

## SEEKING PROMINENT RETAIL / OFFICE USERS

On the ground floor of a mixed use project along PCH in Malibu with rare prominent signage and on-site parking. Neighboring tenants include Zuma Jay's, NOBU, SoHo House, Aviator Nation, and more!



**ASKING**  
\$5.25PSF/MO. MG



**TYPE**  
Retail / Office



**SQUARE FEET**  
+/- 1,483 SF



**LOCATION**  
22775 Pacific Coast Hwy  
Malibu, CA 90265

POTENTIAL SIGNAGE HERE



**PARKING**  
On-Site Parking



**SIGNAGE**  
Prominent Signage  
Along PCH!



**RESTROOMS**  
Fully Built-out

SURF SHOP  
PARKING  
ONLY



# INTERIOR

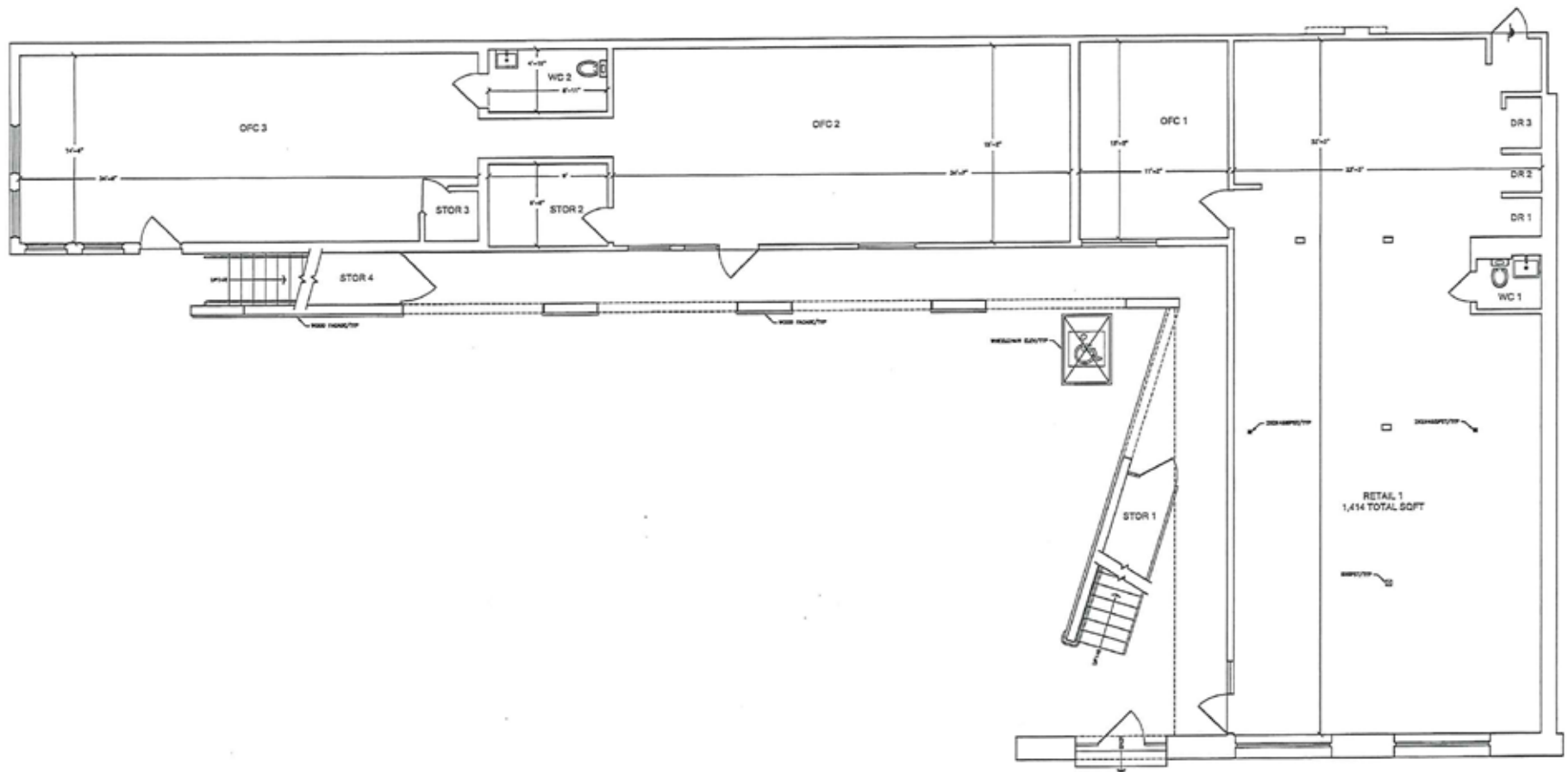




# INTERIOR



# FLOOR PLAN







22775 Pacific Coast Hwy

Pacific Coast Hwy

NOBU Ryokan

Little Beach House Malibu

NOBU Malibu



Malibu Country Mart



22775 Pacific Coast Hwy







22775 Pacific Coast Hwy

Pacific Coast Hwy

NOBU Malibu

Little Beach House Malibu

NOBU Ryokan

Santa Monica



# MALIBU DEMOGRAPHIC KEY FIGURES

## POPULATION

1 MILE

1,181

3 MILE

4,187

5 MILE

5,993

## AVG HOUSEHOLD INCOME

1 MILE

\$196,176

3 MILE

\$197,540

5 MILE

\$198,703

households within  
a 3 mile radius on  
average make nearly

\$200K

number of local  
businesses within  
a 3-mile radius

812





## NEAL GOLUB

LIC. 01023733  
+1 310 550 2667  
NEAL.GOLUB@CBRE.COM

## RYAN GURMAN

LIC. 0197208  
+1 310 650 7545  
RYAN.GURMAN@CBRE.COM

## CBRE

© 2021 CBRE, Inc. All rights reserved. This information has been obtained from sources believed reliable, but has not been verified for accuracy or completeness. You should conduct a careful, independent investigation of the property and verify all information. Any reliance on this information is solely at your own risk. CBRE and the CBRE logo are service marks of CBRE, Inc. All other marks displayed on this document are the property of their respective owners, and the use of such logos does not imply any affiliation with or endorsement of CBRE. Photos herein are the property of their respective owners. Use of these images without the express written consent of the owner is prohibited.