



LAS PALMAS



For those who see beyond walls.

Located in Hollywood's Media District, 1144 Las Palmas is a thoughtfully reimagined industrial space. Retaining its original character, the building balances light, space, and material with care. Bow-truss ceilings diffuse natural light, while reclaimed textures and custom details add depth and history. Every element is intentional, creating a space that feels both distinctive and functional. More than just real estate, it offers a setting designed for creativity and possibility.



The Opportunity

for lease/sale

Details

Building Area
±15,800 SF

Land Area
±14,749 SF

Sale Price/Rental Rate
Inquire for Details

Zoning
CM

Year Built/Renovated
1941/2025

APN
5532-022-003

Contact

Jeff Pion

Vice Chairman
Jeff.pion@cbre.com
BRE 00840278
310 550 2537

Michelle Esquivel

Executive Vice President
Michelle.esquivel@cbre.com
BRE 01290582
310 550 2525

Drew Pion

Associate
Drew.pion@cbre.com
BRE 02085229
310 999 8899



1144 Las Palmas Ave represents a rare and unmatched opportunity to own a piece of Hollywood's creative legacy. With its carefully reimagined design, this space is more than just a property—it's a one-of-a-kind sanctuary for visionaries. Whether you're an art collector seeking an inspiring setting, a production company looking for a creative hub, or an entrepreneur with bold ambitions, this building offers the perfect canvas to elevate your work and lifestyle. Opportunities to acquire such a unique and meticulously crafted space in the heart of the Media District are exceedingly rare, making this a truly once-in-a-lifetime investment.

Rarity

Properties that seamlessly blend historical charm with modern innovation, in one of LA's most creative and dynamic districts, almost never come to market. With so few properties of this caliber available, this is a fleeting chance to secure an extraordinary space that defines possibility.

Location Advantage

Nestled in the heart of the Media District, 1144 Las Palmas offers unparalleled access to iconic studios, galleries, and world-class amenities, making it a perfect home for innovation and collaboration.

Versatility of Use

With its open layouts, bespoke features, and modern amenities, the space adapts effortlessly to your creative vision, whether for production, events, or daily work.

Unique Appeal

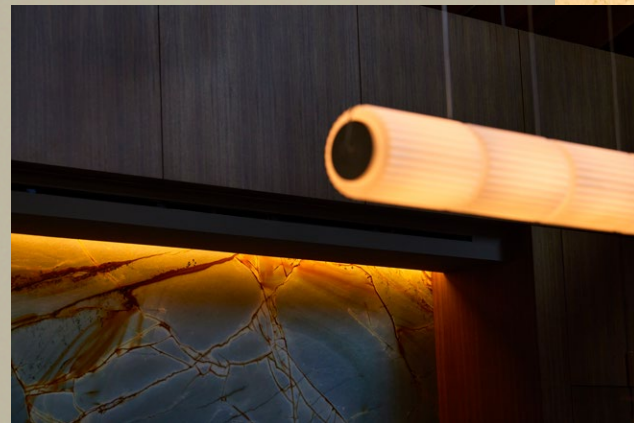
This is more than real estate; it's a rare opportunity—whether for ownership or lease—that aligns with the vision of those who seek only the exceptional.





Property Vision

1144 Las Palmas is more than a building—it's an idea made tangible. Meticulously reimagined with attention to every detail, this is a space for those who demand excellence and thrive in an environment where creativity and craftsmanship converge.

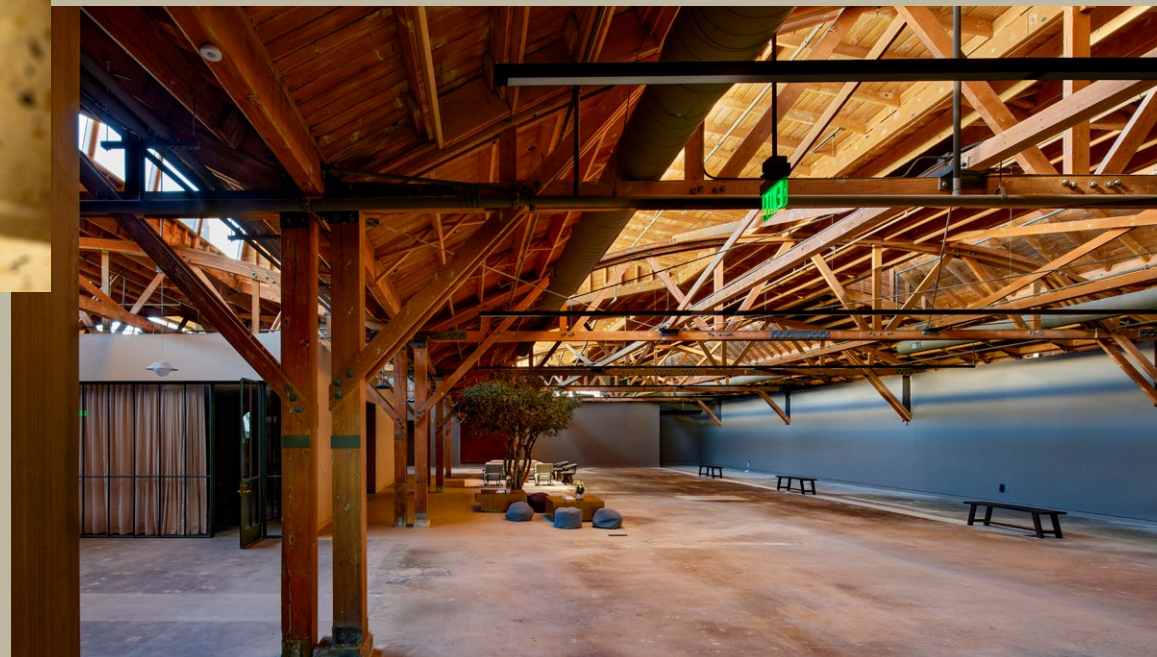


A Curated Experience

Every element of the space has been carefully curated—from the custom architectural plaster by Kamp Studios to the terrazzo floors and Fleetwood steel pivot door. The material choices and design decisions reflect an attention to detail that makes this property not just a space but a sensory experience.

A Space for Visionaries

1144 Las Palmas is more than a property—it's a canvas for the ambitious. With soaring ceilings, diffused natural light, and open, flexible layouts, this space is designed for those who dare to think big. Perfect for creative professionals, collectors, and leaders in the arts and media, it's an ideal setting for innovation and collaboration.



Sustainable design, timeless appeal.

The building's redesign prioritized sustainability without compromising aesthetics. Reclaimed materials, energy-efficient systems, and thoughtful construction practices were integral to the vision, creating a space that's as responsible as it is beautiful.



Harmony between Past and Present

Built upon the legacy of Hollywood's daylight studios, the building weaves its storied history into its modern redesign. Reclaimed materials such as brick and wood from the original 1941 construction are juxtaposed with sleek, bespoke finishes, creating a dialogue between past and present.



Key Features

1144 Las Palmas Ave is a harmonious composition where every element contributes to an extraordinary whole. From the 18-foot bow-truss ceilings that invite natural light to the reclaimed brick and wood that echo its 1941 origins, each detail has been thoughtfully curated. Custom terrazzo flooring, Kamp Studios' bespoke plasterwork, and the Fleetwood steel pivot door create a seamless dialogue between craftsmanship and design. Anchored by a 16-foot olive tree at its heart, this space is more than a sum of its parts—it's a living, breathing masterpiece, crafted to inspire and built to endure.



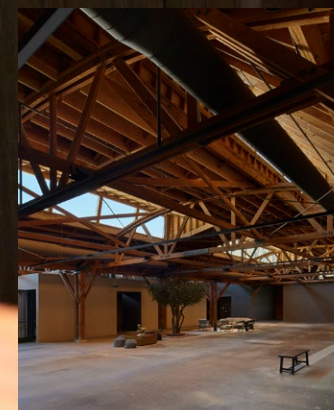
Timeless Bow-Truss Ceilings
Soaring 18-foot ceilings that flood the space with diffused natural light, creating an inspiring environment.



Reclaimed Materials
Original 1941 brick and wood seamlessly integrated with custom architectural finishes for a harmonious blend of past and present.



Bespoke Design Elements
Features like custom terrazzo flooring, Kamp Studios' plasterwork, and a Fleetwood steel pivot door embody craftsmanship at its finest.



Flexible Open Layout
Thoughtfully designed to encourage collaboration, creativity, and multifunctional use.



Screening Room
A private theater designed for an immersive viewing experience—perfect for film screenings, presentations, or simply enjoying cinema in a refined setting.



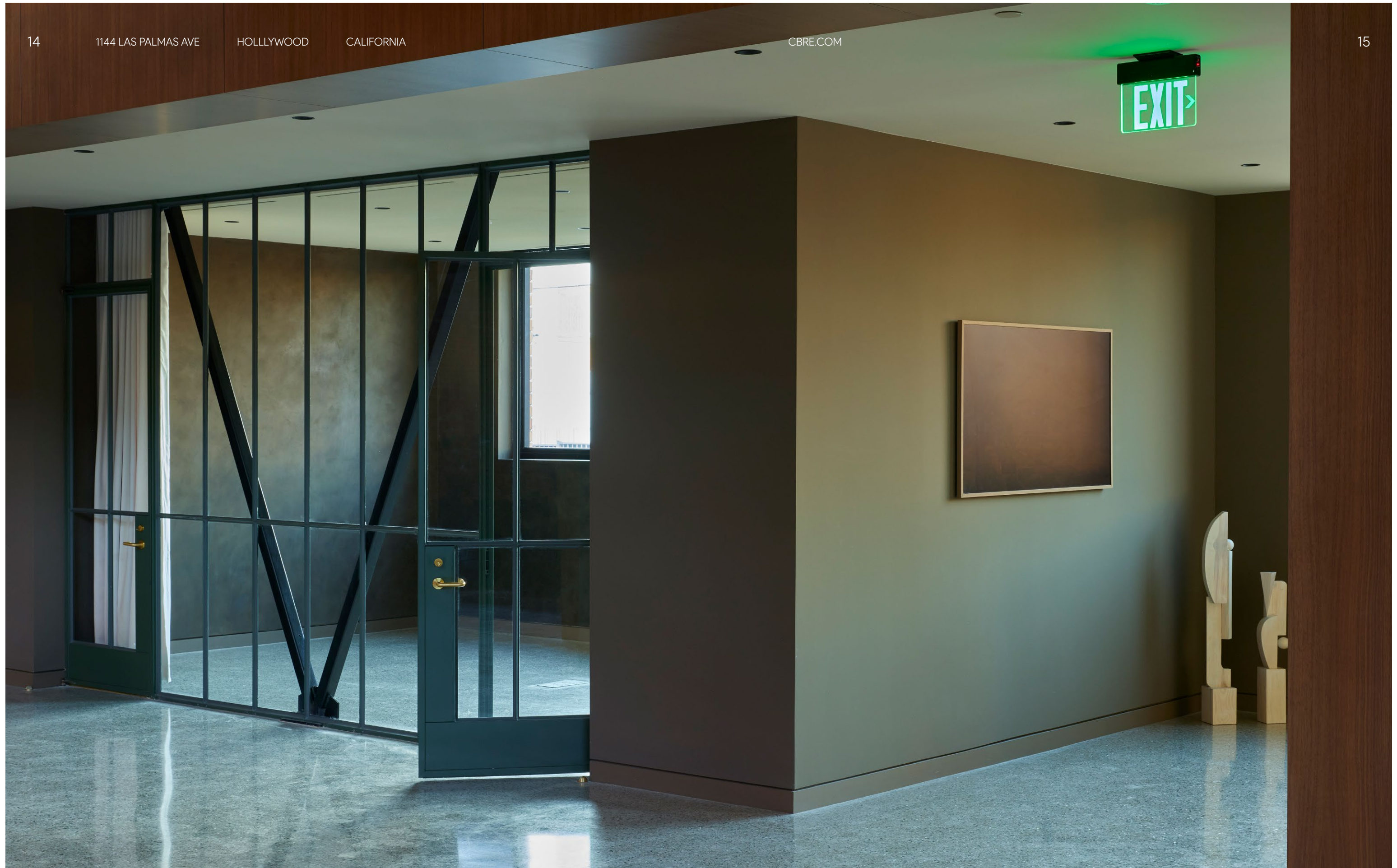
Signature Olive Tree
A stunning 16-foot olive tree serves as a centerpiece, grounding the space in natural beauty and serenity.



Modern Amenities
Includes a custom-designed kitchen, private mezzanine, and hospitality-inspired lounge spaces.



Prime Location
Located in Hollywood's Media District, surrounded by iconic production studios, art galleries, and boutique eateries.



The Space in Detail

The thoughtfully designed floor plan of 1144 Las Palmas Ave offers seamless versatility, blending expansive open spaces with functional private areas. With 18-foot ceilings, a flexible layout, a private screening room, and a central hospitality hub, every square foot is crafted to inspire creativity and collaboration. Whether for production, innovation, or gathering, the flow of this space is as intentional as its design.



▲ A—Entry ▼



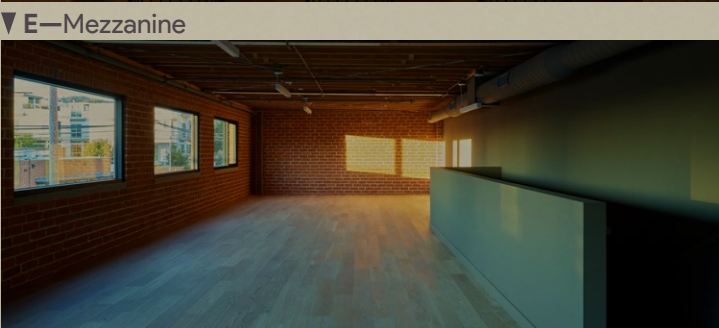
▲ C—Screening Room ▼



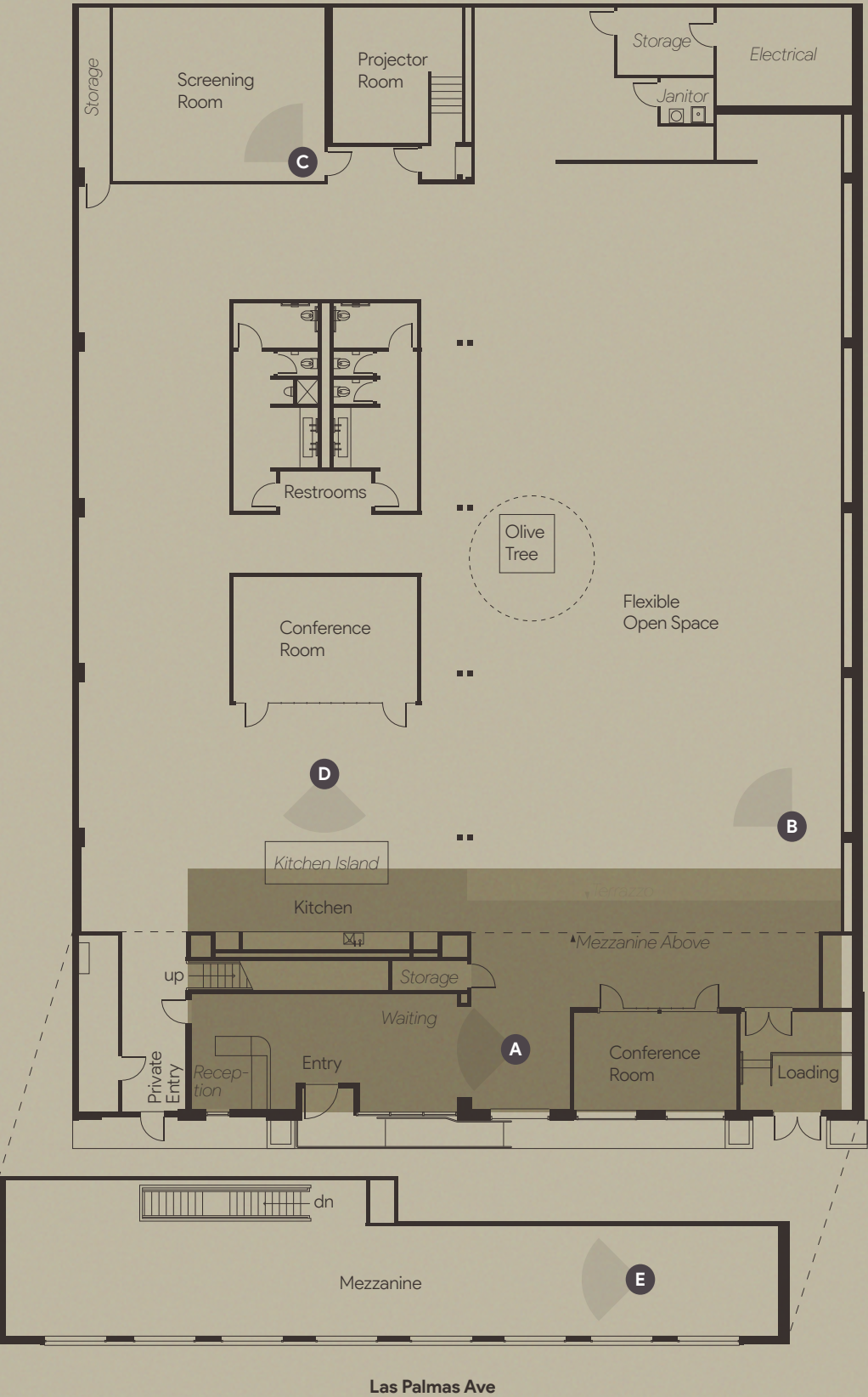
B—Open Space ▼



D—Kitchen ▼



▼ E—Mezzanine





Your Day Here

Morning Energy

Start your day at **Heimat** (4 min drive), a luxury fitness and social club designed for those who value wellness, design, and community. Afterward, grab a perfectly crafted espresso from **Stereoscope Coffee** (3 min walk), known for its artisanal brews and inviting atmosphere.



Tartine



Heimat

Fuel for Focus

Once you're settled in for work at 1144 Las Palmas Ave, enjoy the inspiring surroundings of Hollywood's Media District before heading out for lunch. **Tartine** (4 min drive) offers a fresh and flavorful menu of seasonal dishes and signature pastries, while **Gigi's** (4 min drive) serves up a stylish blend of French bistro classics in a chic setting.



Regen Projects

Creative Breaks

Post-lunch, take a moment for creative inspiration with a visit to **Regen Projects** (4 min walk), a leading contemporary art gallery, or explore **Ralph Pucci** (5 min walk) and **Apparatus** (5 min walk) for iconic design and modern furniture.



Bode

Evening Indulgence

For a special evening, **Jeffrey Deitch** (4 min drive) and **Lisson Gallery** (3 min drive) frequently host stunning art exhibitions that elevate the cultural vibrancy of the area.

Wrap up your day with dinner and cocktails at **Gwen** (5 min drive), offering a trendy and cozy atmosphere perfect for unwinding, or catch up with friends at **The Benjamin** (7 min drive), a refined spot for elevated dining and drinks.



The Benjamin

Everyday Essentials

As the workday winds down, stop by **Mother's Market** (3 min walk) for organic groceries, or visit **Beyond the Streets** (7 min drive), an immersive art space dedicated to graffiti, street art, and contemporary culture. For a touch of luxury, **Jacque Marie Mage** (4 min drive), and **Bode** (5 min drive), a haven for luxury.

Jeffrey Deitch



Gwen

Contact

Jeff Pion

Vice Chairman

Jeff.pion@cbre.com

BRE 00840278

310 550 2537

Michelle Esquivel

Executive Vice President

Michelle.esquivel@cbre.com

BRE 01290582

310 550 2525

Drew Pion

Associate

Drew.pion@cbre.com

BRE 02085229

310 999 8899



CBRE

cbre.com

All information provided regarding the property is deemed reliable but is not guaranteed and should be independently verified. Measurements, features, and descriptions are subject to change without notice. This document is for informational purposes only and does not constitute an offer, solicitation, or guarantee of sale. Prospective buyers are encouraged to perform their own due diligence and consult with appropriate professionals before making any purchasing decisions.

