

2013 S.E. 18TH STREET
OKLAHOMA CITY, OK 73129



Industrial Space For Lease
25,000 SF – 40,000 SF
Lease Price: \$4.95/SF NNN

NAIRED COMMERCIAL
REAL ESTATE
405.840.0600 | NAIRED.COM

BOB SULLIVAN, CCIM
405.641.9798
RSULLIVAN@CCIM.NET

CLARK EVERETT
405.985.8424
CLARK@NAIRED.COM



PROPERTY OVERVIEW

TOTAL SF	100,000 SF
LOT SIZE	4.42 ACRES +/-
YEAR BUILT	1992 RENOVATED 2017
ZONING	I-2
YARD	Fenced
DOORS	(2) Dock High Doors
CEILING HEIGHT	16'

- Multiple Tenant Building
- Well Maintained Storage Facility
- Fenced Yard
- 200 Amps Power
- Industrial Area in the CBD

DEMOGRAPHICS



POPULATION
 1 MILE: 2,316
 3 MILES: 65,656
 5 MILES: 197,513



AVERAGE HOUSEHOLD INCOME
 1 MILE: \$55,865
 3 MILES: \$61,485
 5 MILES: \$66,857



TOTAL HOUSEHOLDS
 1 MILE: 822
 3 MILES: 26,095
 5 MILES: 78,508



0.5 MILE FROM I-35
 1.5 MILES FROM I-40
 2 MILES FROM I-235
 4 MILES FROM I-240

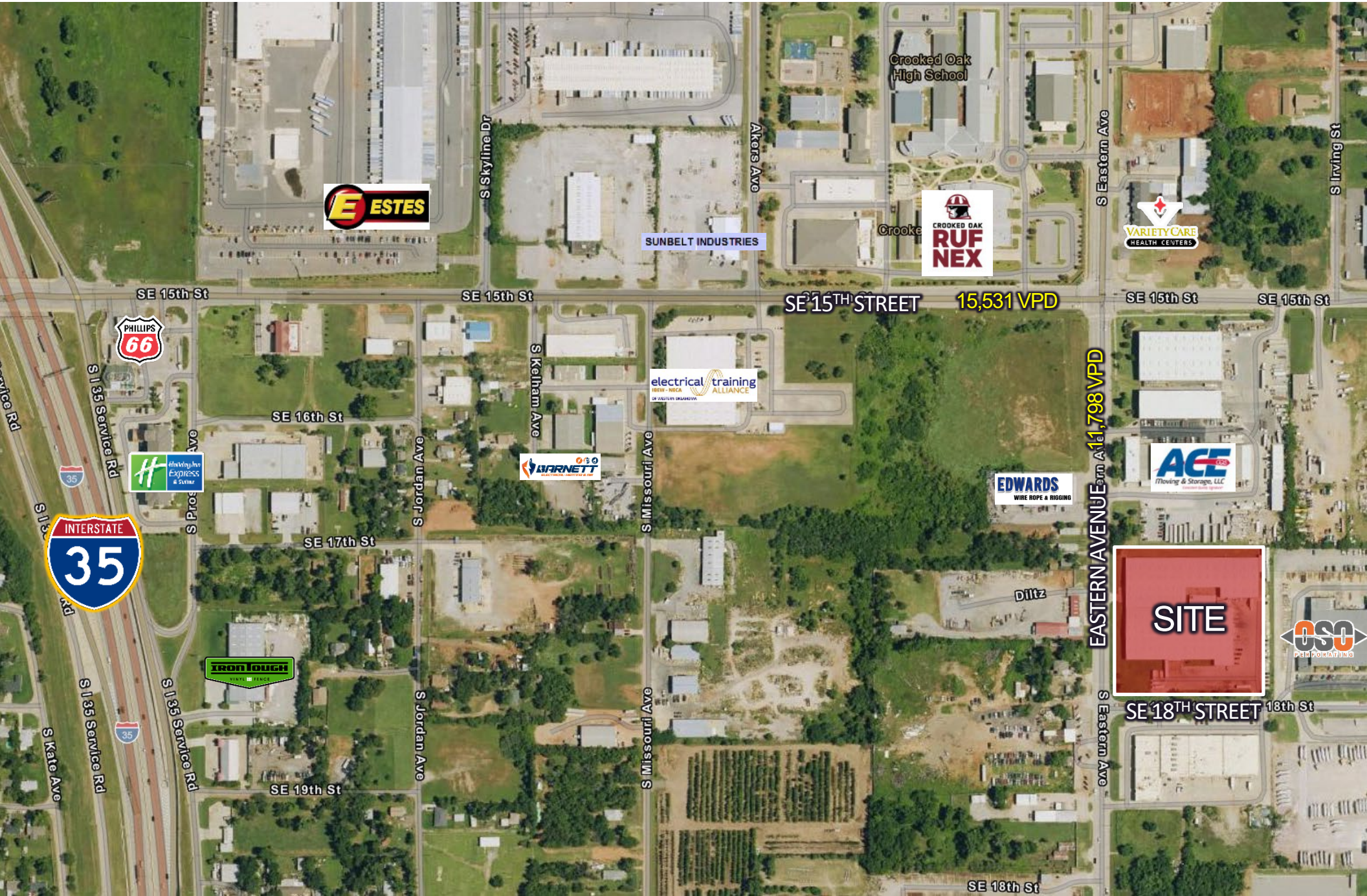
2013 S.E. 18TH STREET



2013 S.E. 18TH STREET



2013 S.E. 18TH STREET AERIAL



2013 S.E. 18TH STREET AERIAL

