

LOHI OFFICE

FOR LEASE
6,028 SF



2424 W. Caithness Place

Denver, CO 80211

Property Overview

- Former Corepower corporate space with upscale finishes and large windows
- Shared parking available as well as ample street parking
- Office suite located in the highly desirable LOHI neighborhood with private entrance
- Abundant restaurants and coffee shops within walking distance
- Walker's Paradise (**Walk Score : 96**)

Availability 6,028 SF

Year Built 2012

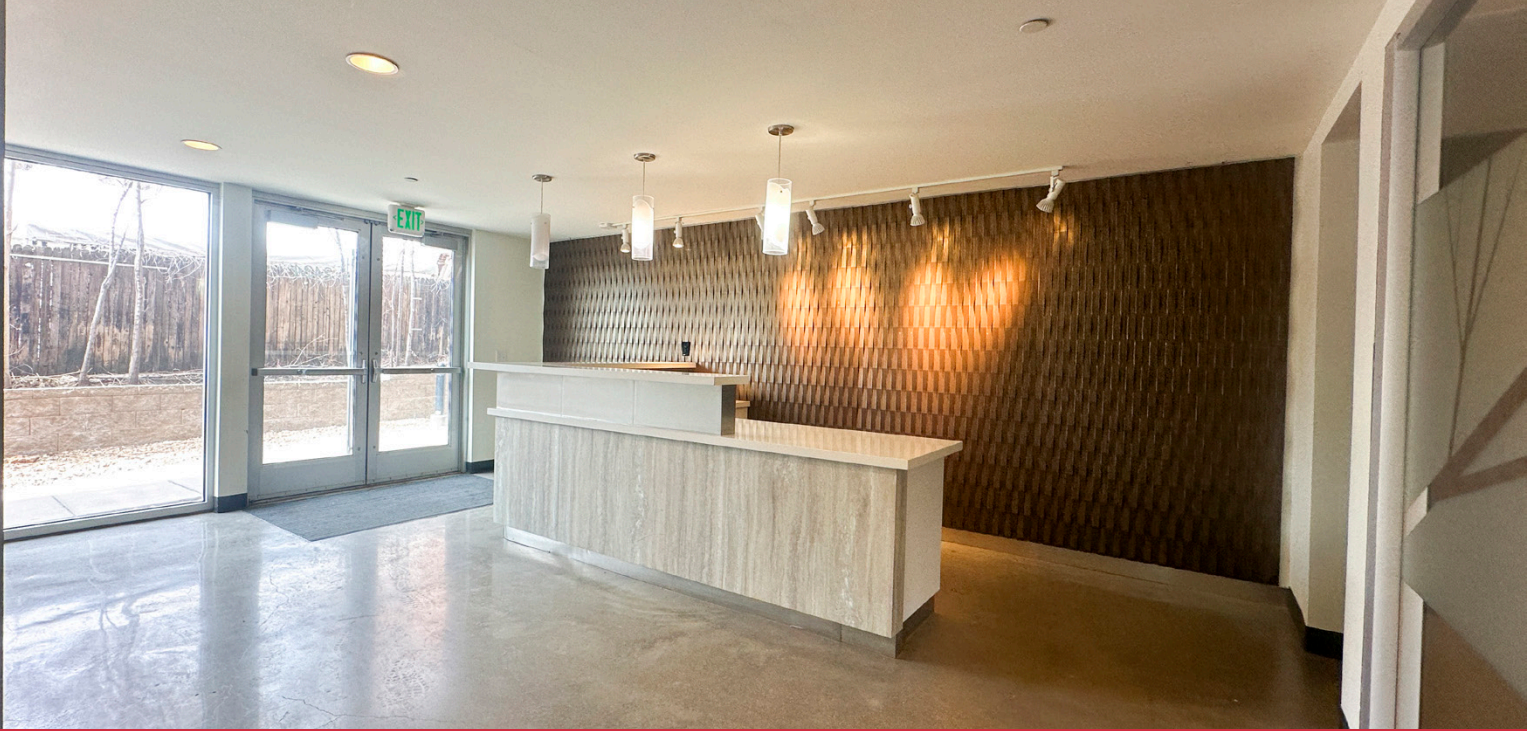
Expenses \$13.66
for 2024

Rate : \$35.00/SF FSG

NAI Shames Makovsky

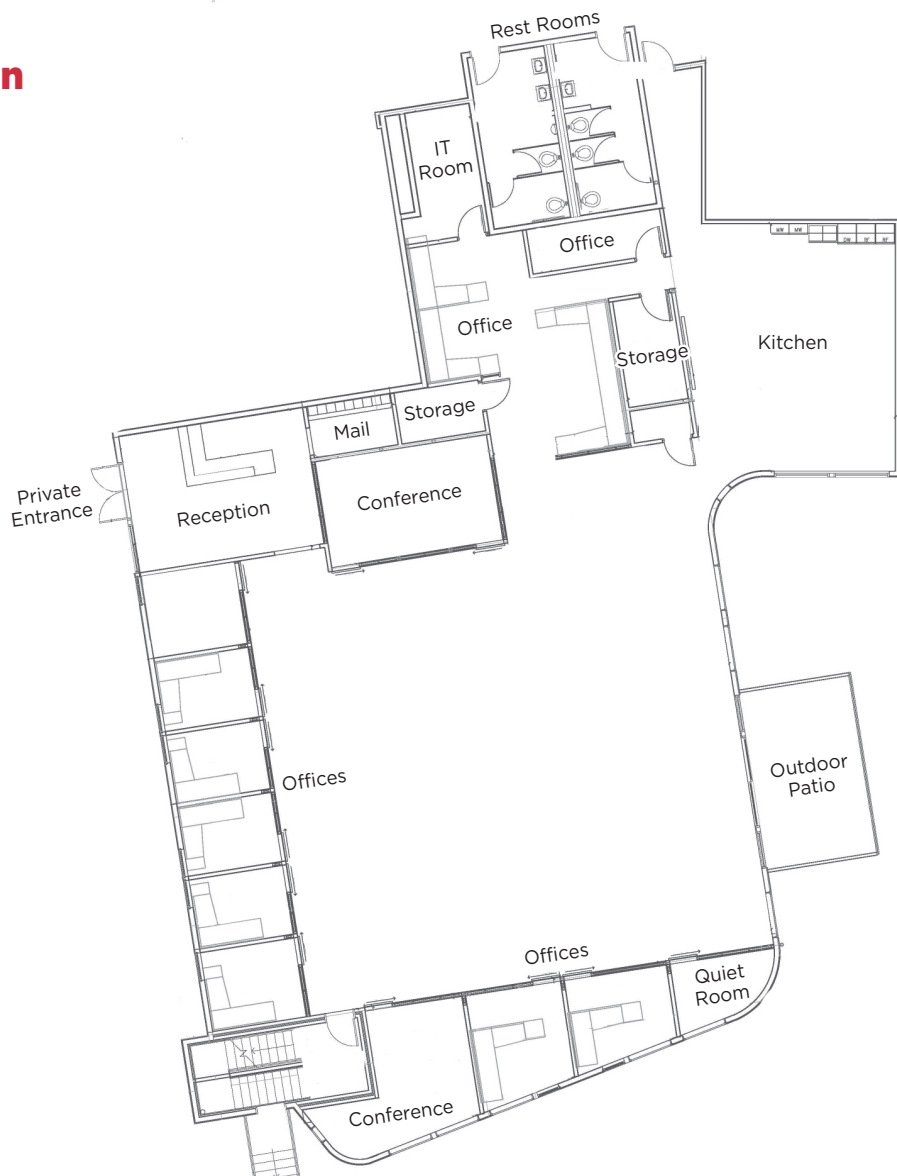
ANA SANDOMIRE
303 565 3029
asandomire@shamesmakovsky.com

PETER KNISELY
720 881 7534
pknisely@shamesmakovsky.com



- Reception area with private, off-street entrance

Floor Plan





- Modern, open layout with floor to ceiling windows and offices
- Contemporary design featuring upscale finishes, polished concrete, large windows





HIGHLAND NEIGHBORHOOD



- 1** Senor Bear
- 2** Tony P's Pizzeria
- 3** The Well Pizza & bar
- 4** Highland Tap and Burger
- 5** Uncle
- 6** The Green Collective Eatery
- 7** The Butterfigers
- 8** Lady Jane
- 9** Method Coffee
- 10** Bartaco
- 11** Williams & Graham
- 12** Postino
- 13** fieldTRIP
- 14** Happy Camper
- 15** Avanti Food & Beverage
- 16** Root Down
- 17** Noisette Restaurant
- 18** Prost Brewing
- 19** The Bindery
- 20** My Neighbor Felix
- 21** Linger
- 22** Little Man Ice Cream
- 23** Mizu Izakaya
- 24** Maine Shack
- 25** Cart Driver Lo-Hi

ANA SANDOMIRE

303 565 3029
 asandomire@shamesmakovsky.com

PETER KNISELY

720 881 7534
 pknisely@shamesmakovsky.com