



10875 SAGE POINT CT.

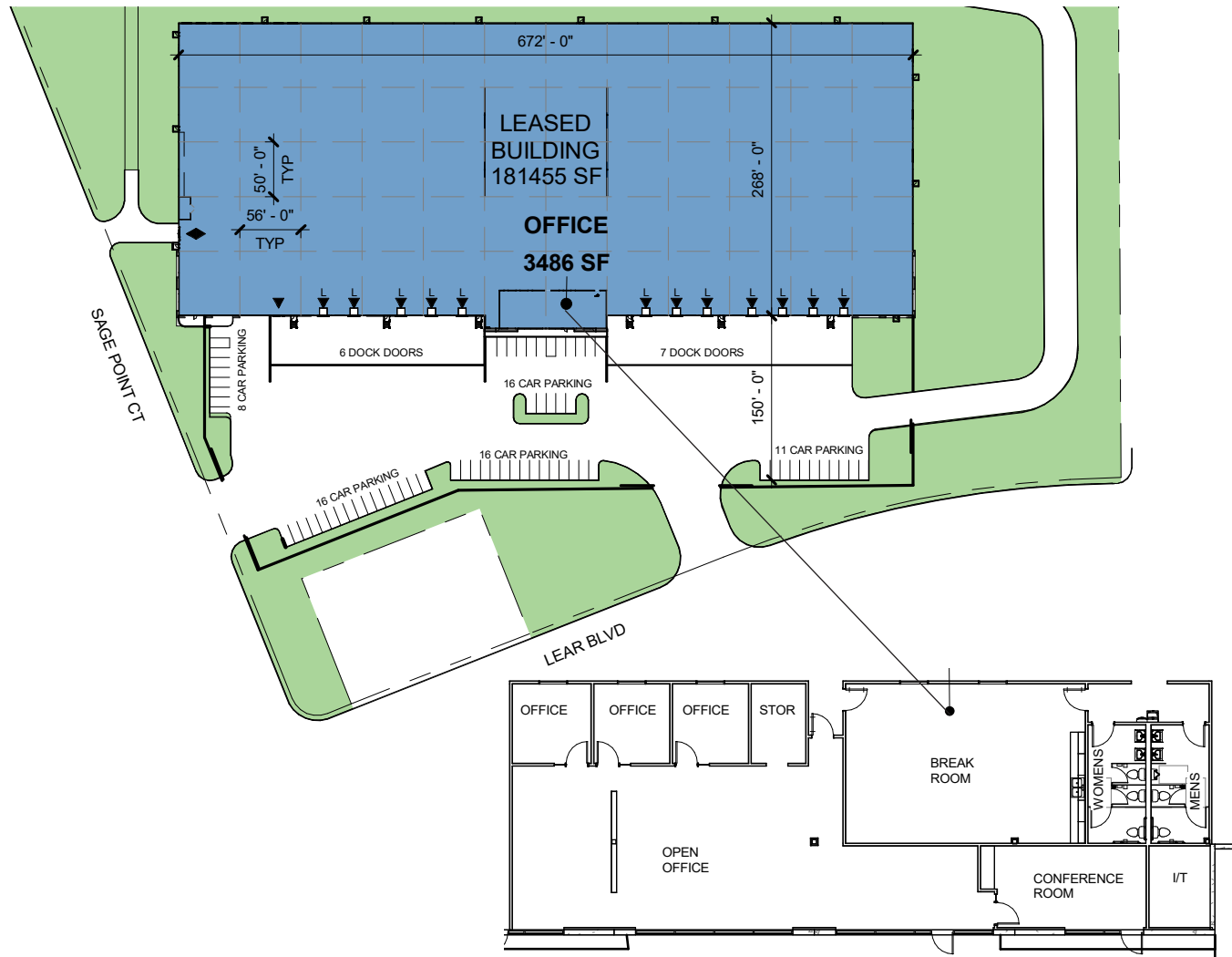
# Prologis Sage Point 6

**CBRE**

 **PROLOGIS**<sup>®</sup>

# Building Specifications

- 181,455 SF available
- 3,486 SF office area
- 30' clear height
- 50' x 56' column spacing
- 13 Dock doors
- 1 Drive in doors
- ESFR Sprinkler rating
- 1,000 Amps, 277/480V, 3 phase power
- 66 Auto parking spaces
- Built in 2005
- I-Industrial zoning



- Available
- Dock Door
- Drive-in Door



## Population

### Total Population

### Total Daytime Population

<b>1 MILE »</b>	972	1,340
<b>3 MILES »</b>	30,286	20,082
<b>5 MILES »</b>	50,715	33,123



## Household Income

### Median

### Average

### Per Capita

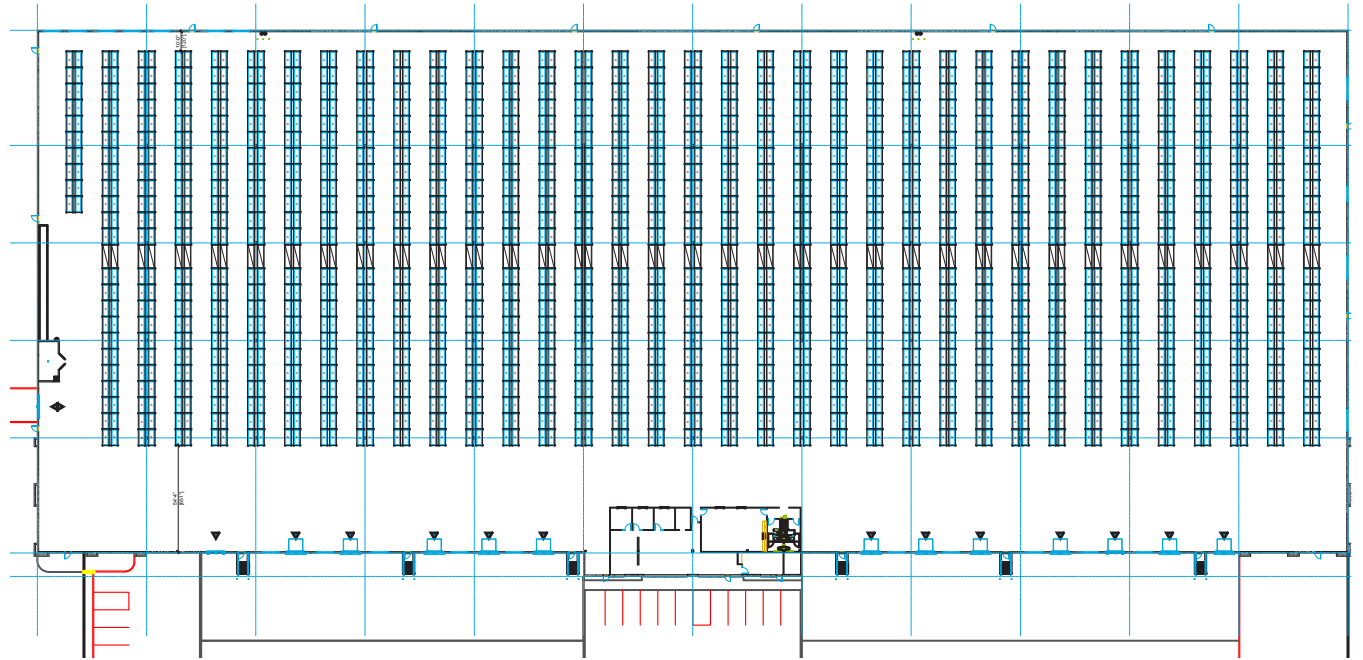
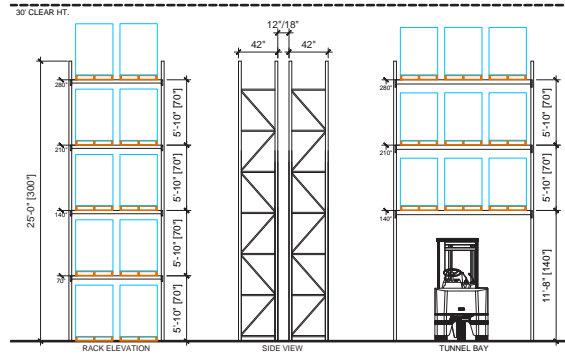
\$92,189	\$126,985	\$42,477
\$83,630	\$98,144	\$32,910
\$82,714	\$97,427	\$33,900

# Potential Racking Options

**16,452 Total Pallet Positions**

10'-6" Aisle (Typical)

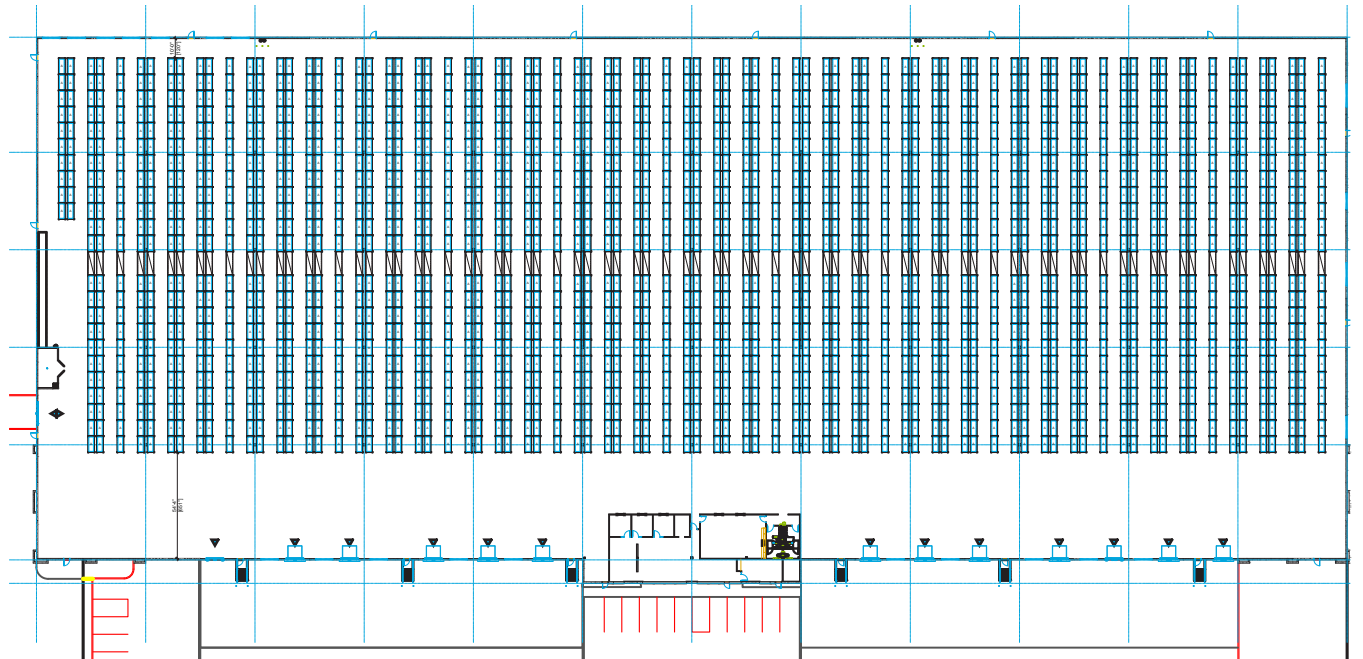
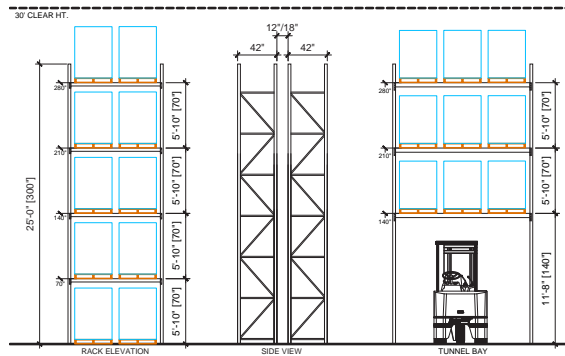
New and Used Racking Available

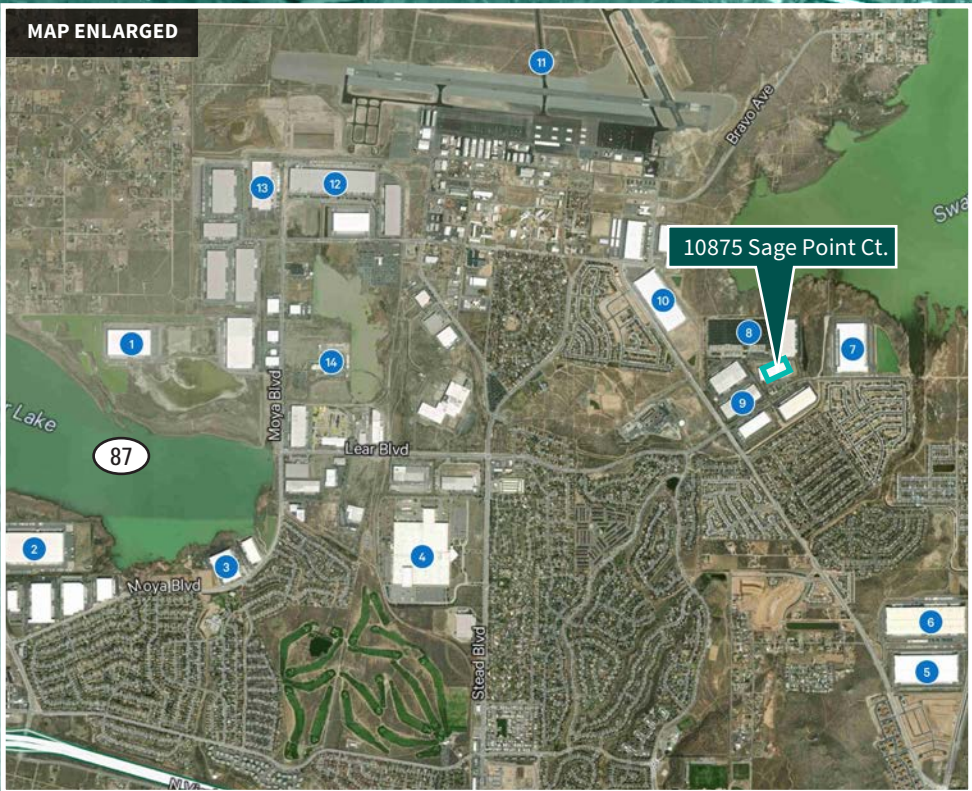
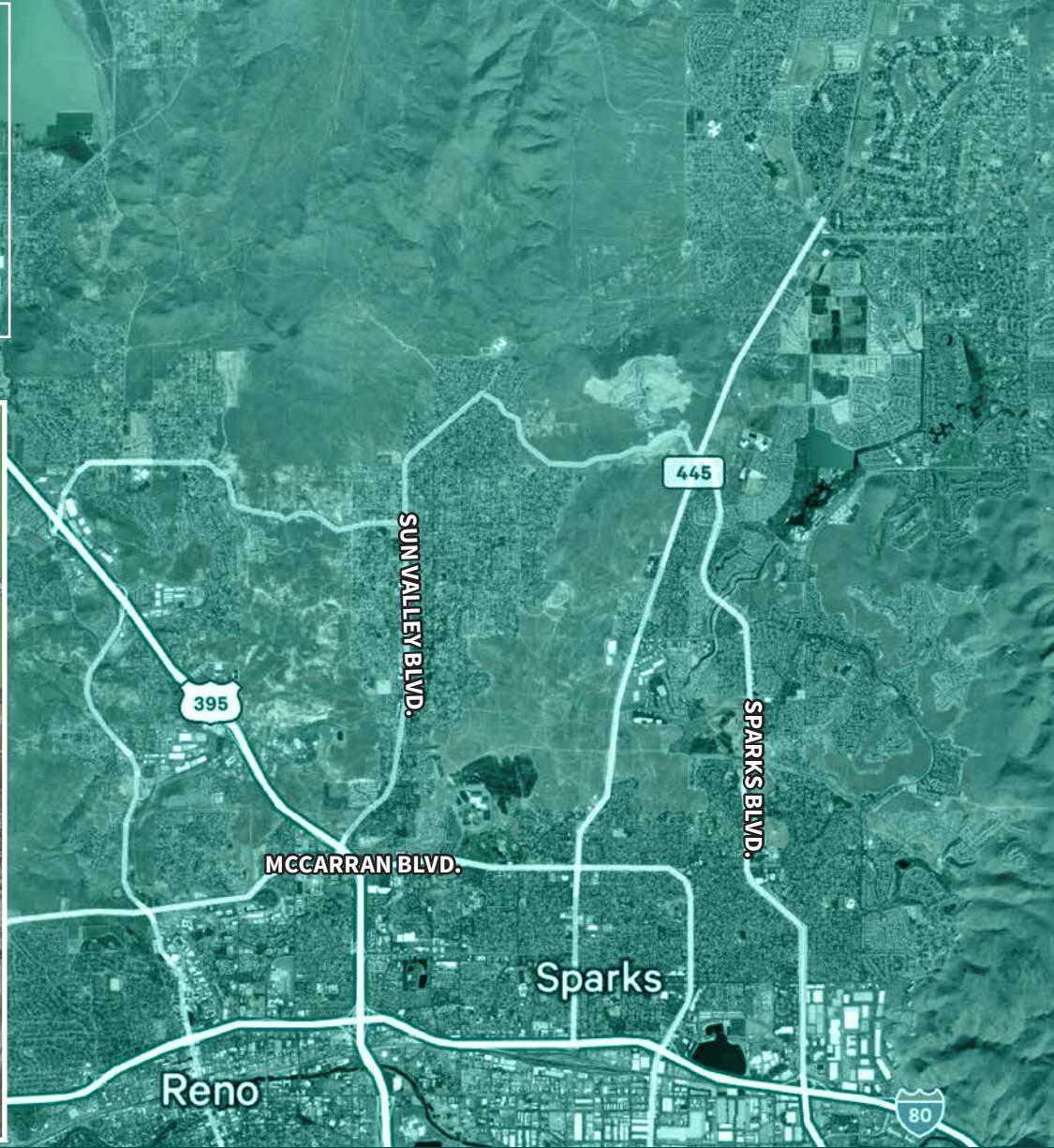


**19,320 Total Pallet Positions**

7'-0" Aisle (Typical)

New and Used Racking Available





## Corporate Neighbors

  
12.1 miles to  
Reno-Tahoe International

  
~11.5 miles to US  
395/580 and I-80  
Interchange

  
11 miles to  
Downtown Reno

- |                       |                        |
|-----------------------|------------------------|
| 1 Urban Outfitters    | 8 Sherwin-Williams     |
| 2 Petco               | 9 Volvo                |
| 3 Sally Beauty Supply | 10 Makita              |
| 4 JCPenney            | 11 Reno Stead Airport  |
| 5 Fosdick             | 12 Company Name        |
| 6 Uline               | 13 General Motors      |
| 7 HUB                 | 14 Hidden Valley Ranch |



**CBRE – Reno**

7900 Rancharrah Pkwy.  
Suite 200  
Reno, NV 89511

**Eric Bennett**

Executive Vice President  
Lic. S.0053815  
+1 775 813 3794  
eric.bennett@cbre.com



**Prologis – Reno**

5520 Kietzke Ln.  
Suite 230  
Reno, NV 89511

**Prologis Headquarters**

Pier 1, Bay 1  
San Francisco, CA 94111  
Main: +1 415 394 4000  
info@prologis.com

www.prologis.com  
NYSE: PLD  
Twitter: @Prologis

**Christina Rangel**

Senior Leasing Manager  
+1 775 829 3012  
cwilliams@prologis.com

**Lisa Brady**

VP-Market Officer  
+1 702 217 5460  
lbrady@prologis.com

Prologis is the global leader in logistics real estate with approximately XXX billion square feet owned and under management in 19 countries on four continents.

Data as of May 13, 2025, for assets the company owned or had investments in, on a wholly owned basis or through co-investment ventures, properties and development projects.

© 2025 CBRE, Inc. All rights reserved. This information has been obtained from sources believed reliable but has not been verified for accuracy or completeness. CBRE, Inc. makes no guarantee, representation or warranty and accepts no responsibility or liability as to the accuracy, completeness, or reliability of the information contained herein. You should conduct a careful, independent investigation of the property and verify all information. Any reliance on this information is solely at your own risk. CBRE and the CBRE logo are service marks of CBRE, Inc. All other marks displayed on this document are the property of their respective owners, and the use of such marks does not imply any affiliation with or endorsement of CBRE. Photos herein are the property of their respective owners. Use of these images without the express written consent of the owner is prohibited

