

# FOR SALE



**Winner's Edge**  
Corporate Real Estate Services

2.46 ACRES

305 & 325 S. Lambert Rd, Glen Ellyn, IL



## ABOUT THIS PROPERTY:

- 2.46 Acres, 2 Lots
- Zoning R1 (possible R4)
- Currently 2 Single Family homes
- PIN 05-22-417-001 & 003
- Taxes \$19,353 (2024)
- Asking Price \$1,900,000

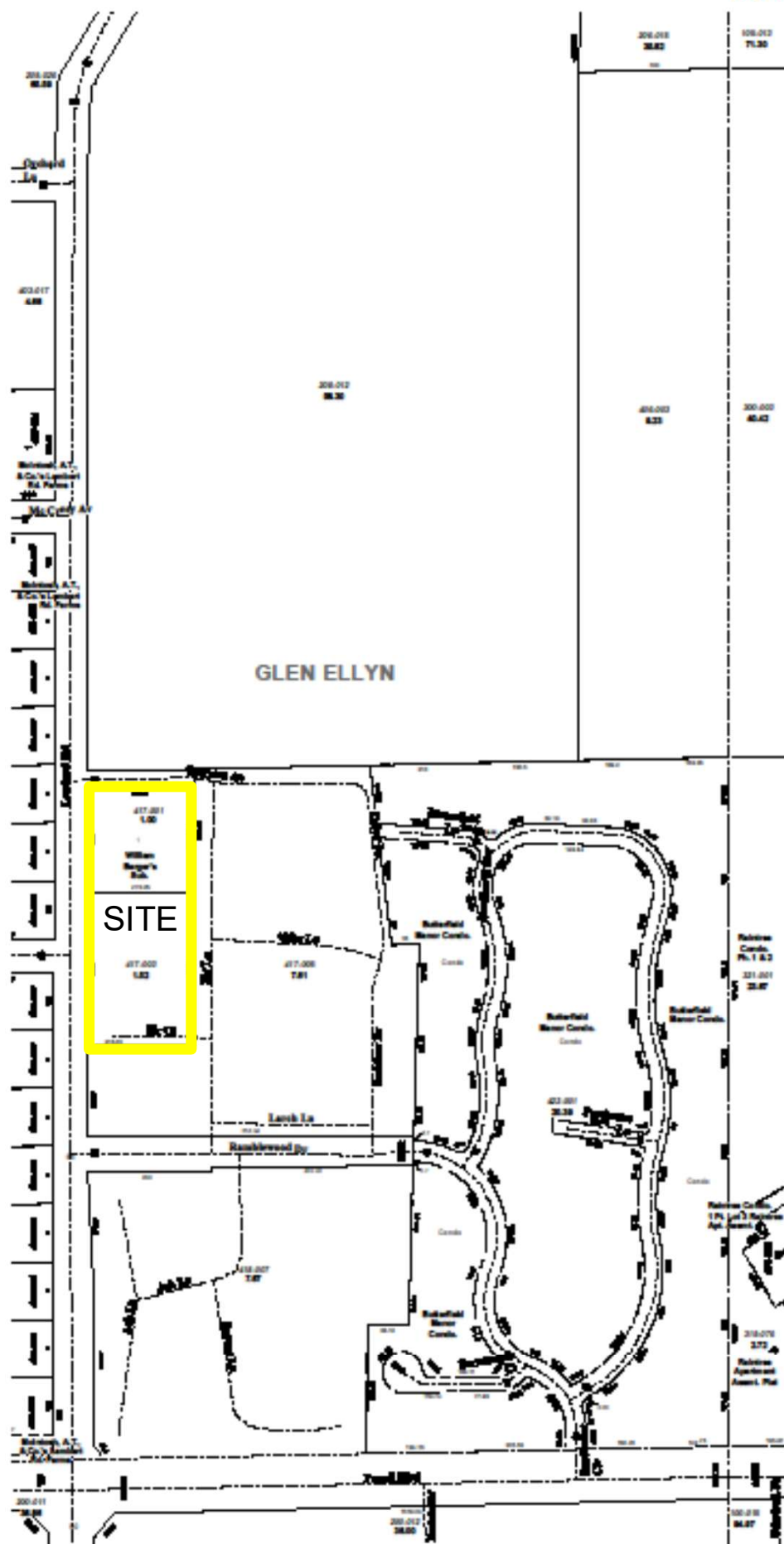
## FOR MORE INFORMATION:

Polly Parchem Berry, CCIM  
[pberry@winnersedgeinc.com](mailto:pberry@winnersedgeinc.com)  
630.544.8999

WINNER'S EDGE INC.  
999 North Main Street, #202  
Glen Ellyn, IL 60137



05-22D-E



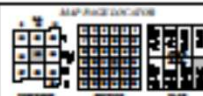
PLAT DATE: 09/03/03

The Adwell Company  
400 N. Lake Street, Suite 200  
Chicago, IL 60610-3445  
(773) 462-5000 FAX (773) 462-5001  
WWW.ADWELLCO.COM

**MILTON TWP.**  
**E1/2 SEC. 22 T.39N. R.10E.**  
**DUPAGE COUNTY, ILLINOIS**



Scale: 1"=200'



This map created for assessment purposes only. Refer to recorded plat and deeds for legal descriptions and property boundaries.  
Copyright 2003 - The County of DuPage, Illinois.