



RAINTREE VILLAGE SHOPPING CENTER

RETAIL SPACE AVAILABLE FOR LEASE

150 Hwy & SW Ward Rd (SEC), Lee's Summit, MO



LEASE RATE \$20/SF NNN | 1,139 SF SPACE

DEMOGRAPHICS

	1 mile	3 miles	5 miles
Estimated Population	9,034	28,761	72,356
Avg. Household Income	\$164,544	\$157,553	\$135,004

- 33,340 SF shopping center on 8.06 acres
- Great opportunity to get in at low market rents
- Recent updates completed with no deferred maintenance
- Located off 150 Highway in a growing suburb of Greater Kansas City
- Beautifully maintained neighborhood center
- New Walmart Supercenter and multiple other developments in the immediate vicinity

[CLICK HERE TO VIEW MORE LISTING INFORMATION](#)

For More Information Contact:

GARRETT COHOON | 816.412.7365 | gchoon@blockandco.com

Exclusive Agent





RAINTREE VILLAGE SHOPPING CENTER

RETAIL SPACE AVAILABLE FOR LEASE

150 Hwy & SW Ward Rd (SEC), Lee's Summit, MO

AERIAL





RAINTREE VILLAGE SHOPPING CENTER

RETAIL SPACE AVAILABLE FOR LEASE

150 Hwy & SW Ward Rd (SEC), Lee's Summit, MO

AERIAL





RAINTREE VILLAGE SHOPPING CENTER

RETAIL SPACE AVAILABLE FOR LEASE

150 Hwy & SW Ward Rd (SEC), Lee's Summit, MO

AERIAL



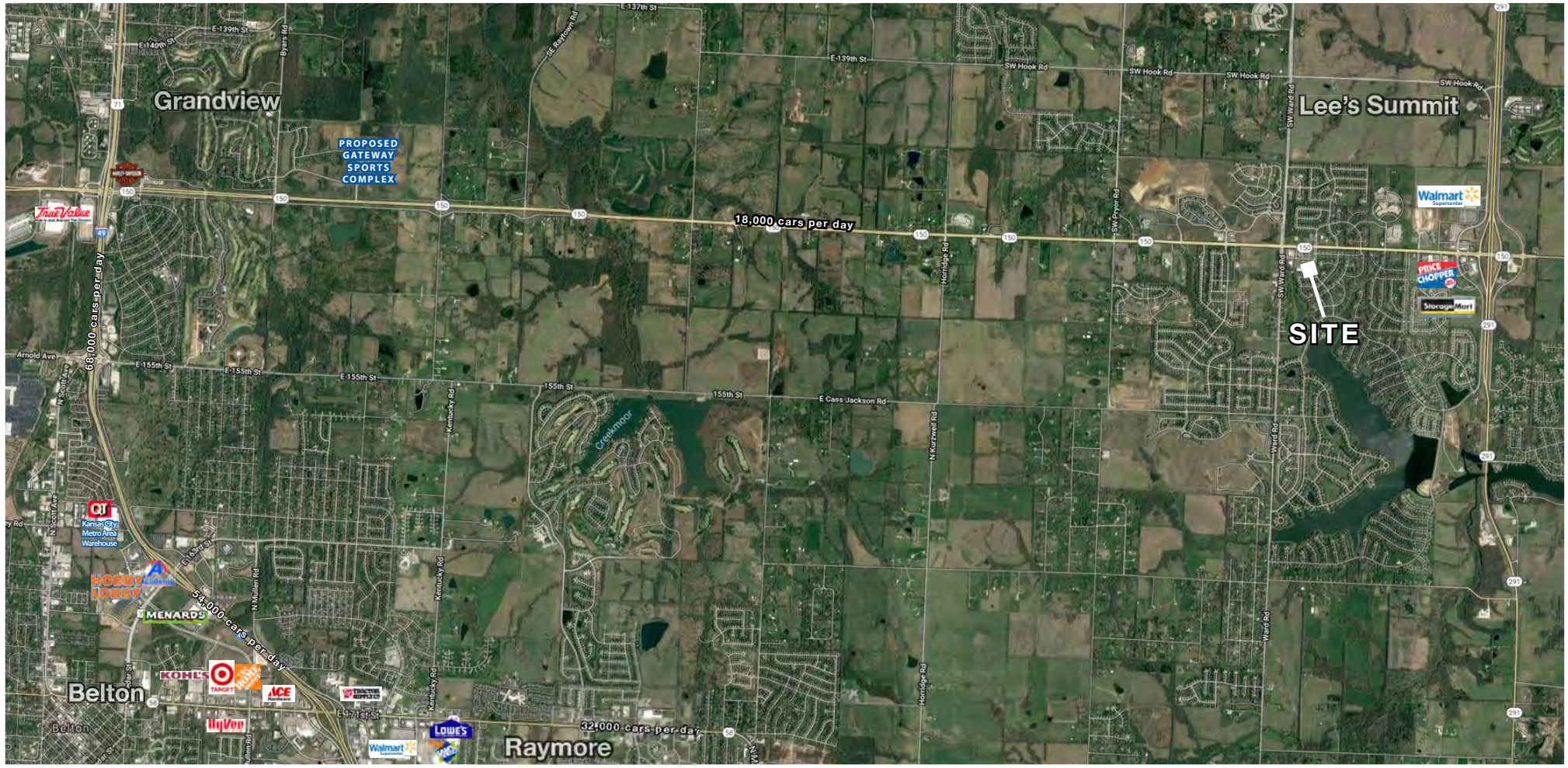


RAINTREE VILLAGE SHOPPING CENTER

RETAIL SPACE AVAILABLE FOR LEASE

150 Hwy & SW Ward Rd (SEC), Lee's Summit, MO

AERIAL





RAINTREE VILLAGE SHOPPING CENTER

RETAIL SPACE AVAILABLE FOR LEASE

150 Hwy & SW Ward Rd (SEC), Lee's Summit, MO

SITE PLAN



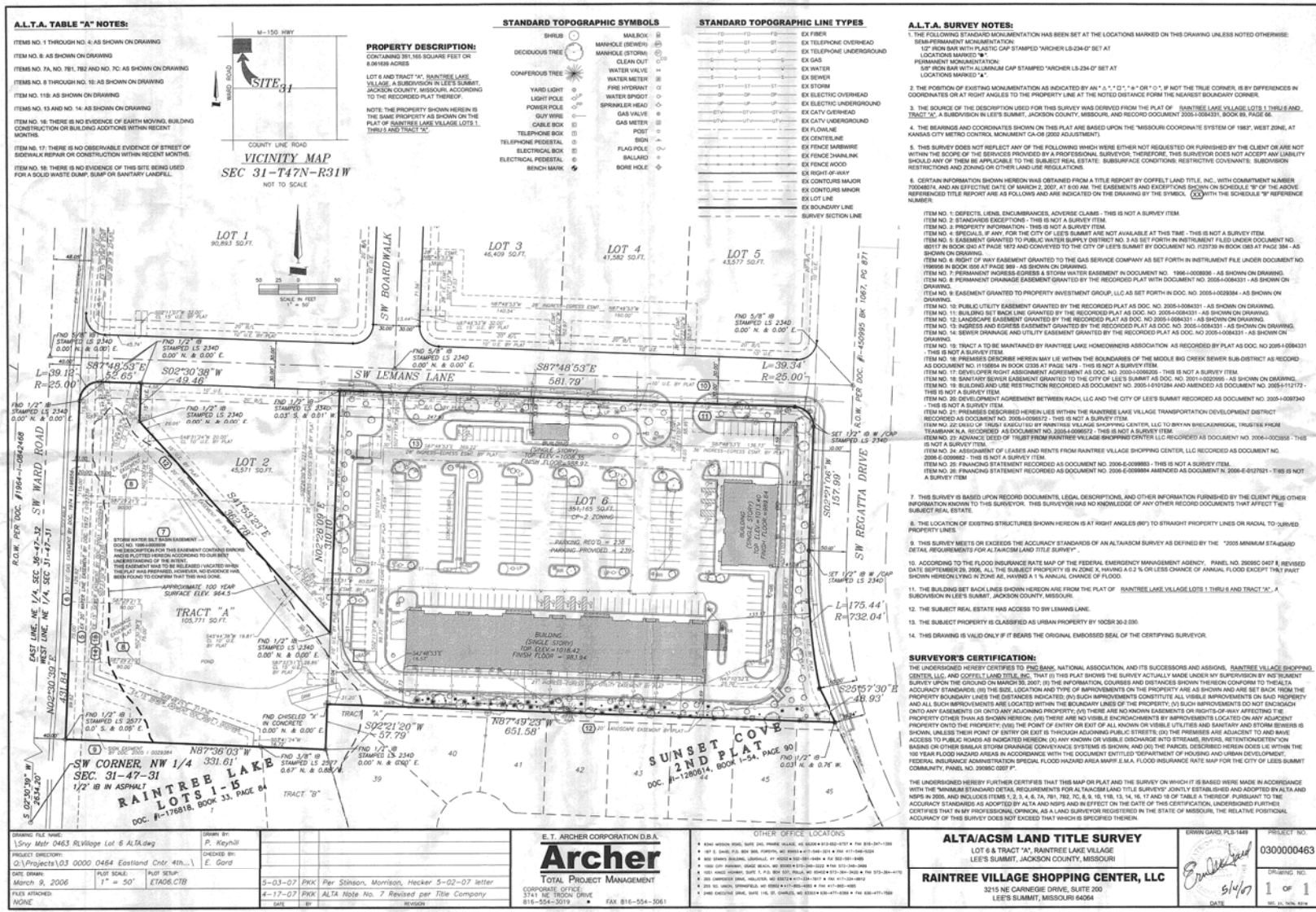
All information furnished regarding property for sale or lease is from sources deemed reliable, but no warranty or representation is made as to the accuracy thereof and the same is subject to errors, omissions, changes of prices, rental or other conditions, prior sale or lease or withdrawal without notice.

RAINTREE VILLAGE SHOPPING CENTER

RETAIL SPACE AVAILABLE FOR LEASE

150 Hwy & SW Ward Rd (SEC), Lee's Summit, MO

SURVEY

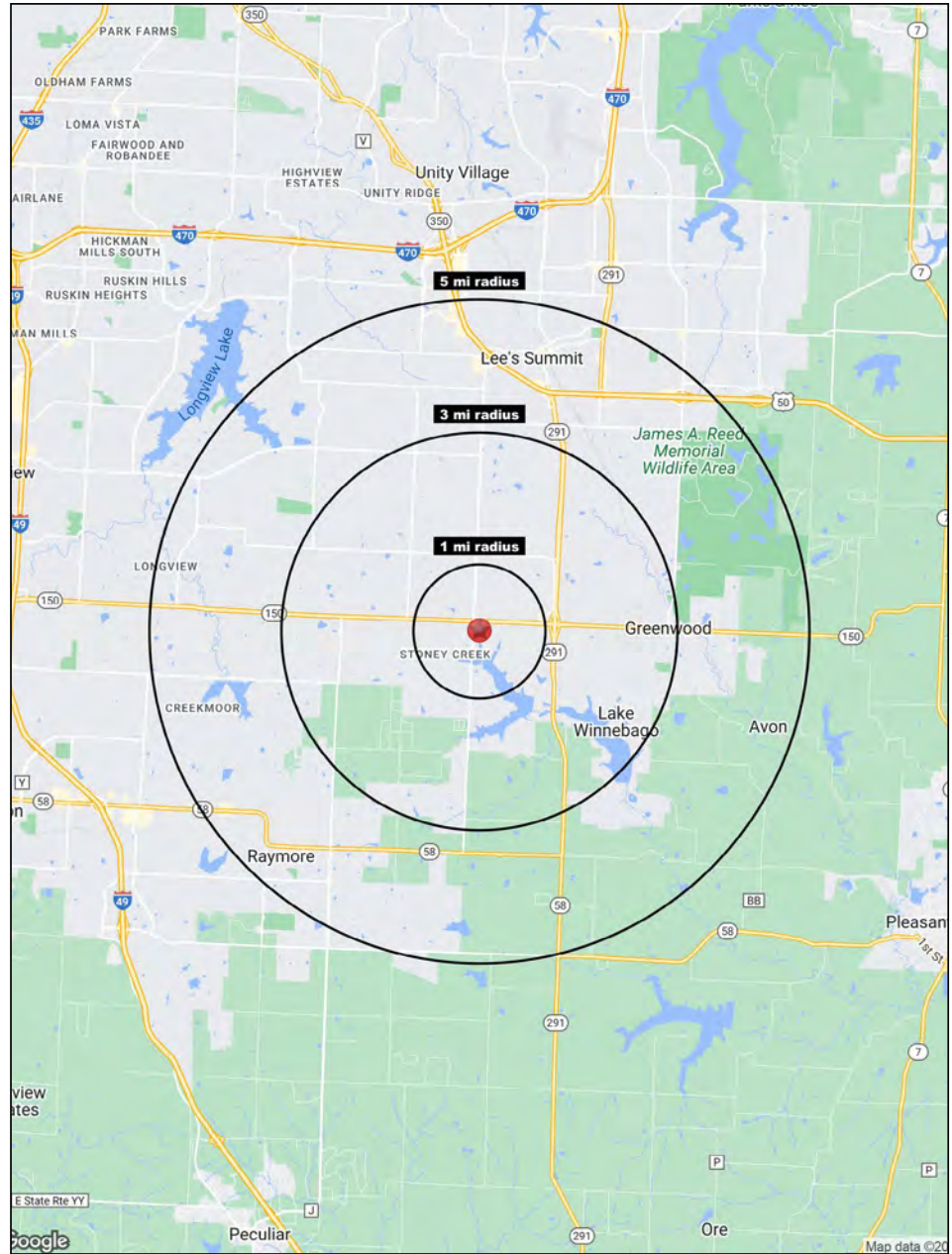
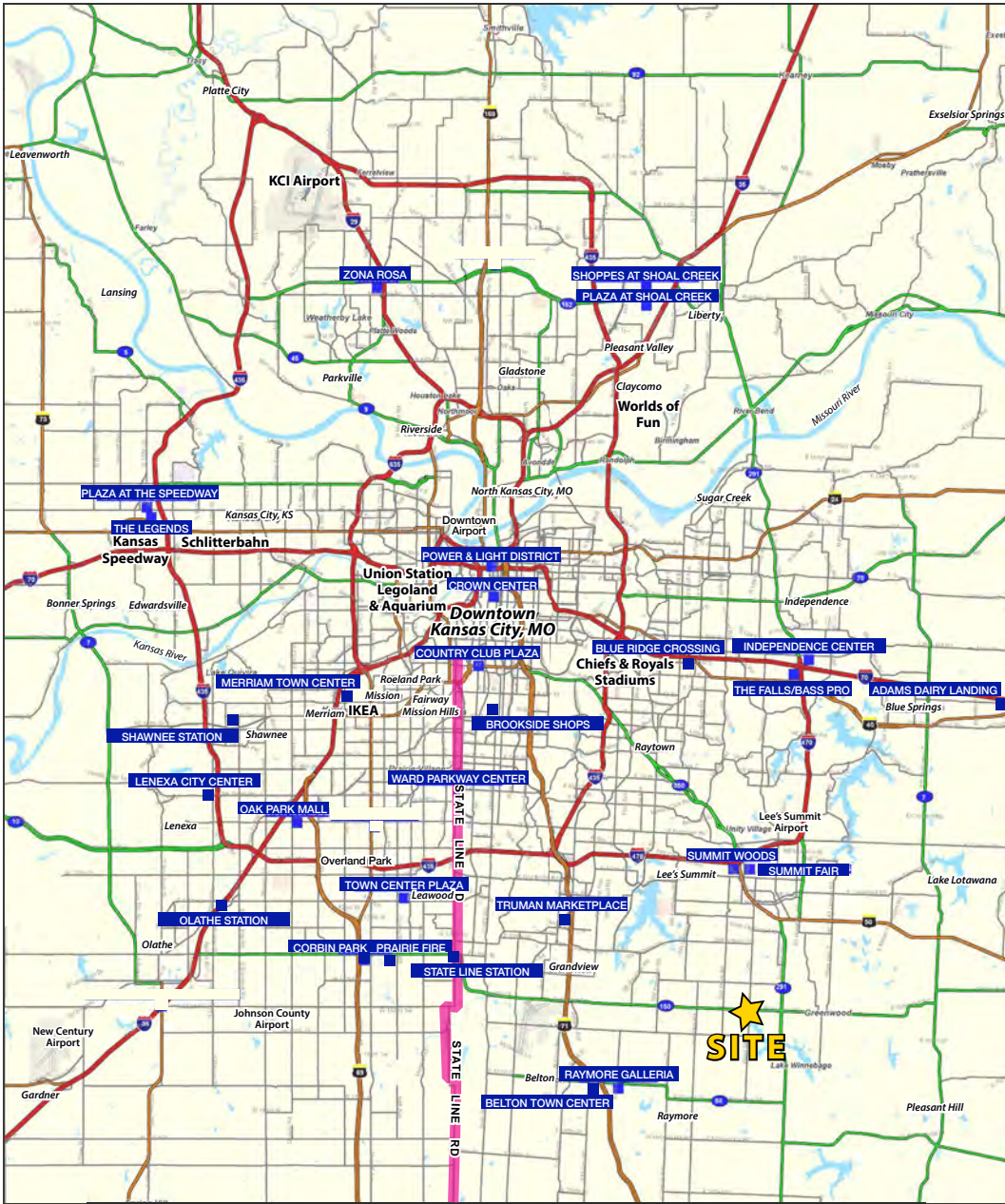




RAINTREE VILLAGE SHOPPING CENTER

RETAIL SPACE AVAILABLE FOR LEASE

150 Hwy & SW Ward Rd (SEC), Lee's Summit, MO



Block & Company, Inc., Realtors | 605 W. 47th Street, Ste. 200, Kansas City, MO 64112 | 816.753.6000 | www.blockandco.com



All information furnished regarding property for sale or lease is from sources deemed reliable, but no warranty or representation is made as to the accuracy thereof and the same is subject to errors, omissions, changes of prices, rental or other conditions, prior sale or lease or withdrawal without notice.



RAINTREE VILLAGE SHOPPING CENTER

RETAIL SPACE AVAILABLE FOR LEASE

150 Hwy & SW Ward Rd (SEC), Lee's Summit, MO

817-899 SW Lemans Lane Lee's Summit, MO 64082	1 mi radius	3 mi radius	5 mi radius
Population			
2024 Estimated Population	9,034	28,761	72,356
2029 Projected Population	9,799	30,676	75,338
2020 Census Population	8,394	27,070	70,386
2010 Census Population	7,111	22,699	62,053
Projected Annual Growth 2024 to 2029	1.7%	1.3%	0.8%
Historical Annual Growth 2010 to 2024	1.9%	1.9%	1.2%
2024 Median Age	38.4	38.5	39.7
Households			
2024 Estimated Households	3,289	10,212	28,014
2029 Projected Households	3,593	10,977	29,297
2020 Census Households	3,061	9,543	26,633
2010 Census Households	2,507	7,906	23,454
Projected Annual Growth 2024 to 2029	1.8%	1.5%	0.9%
Historical Annual Growth 2010 to 2024	2.2%	2.1%	1.4%
Race and Ethnicity			
2024 Estimated White	79.2%	82.0%	81.6%
2024 Estimated Black or African American	11.7%	9.6%	9.7%
2024 Estimated Asian or Pacific Islander	2.4%	1.8%	1.9%
2024 Estimated American Indian or Native Alaskan	0.2%	0.2%	0.2%
2024 Estimated Other Races	6.5%	6.4%	6.7%
2024 Estimated Hispanic	6.2%	5.5%	5.7%
Income			
2024 Estimated Average Household Income	\$164,544	\$157,553	\$135,004
2024 Estimated Median Household Income	\$133,576	\$130,009	\$108,463
2024 Estimated Per Capita Income	\$59,925	\$55,953	\$52,291
Education (Age 25+)			
2024 Estimated Elementary (Grade Level 0 to 8)	0.7%	0.9%	1.5%
2024 Estimated Some High School (Grade Level 9 to 11)	1.5%	1.5%	1.7%
2024 Estimated High School Graduate	19.8%	18.0%	20.1%
2024 Estimated Some College	18.9%	20.5%	22.3%
2024 Estimated Associates Degree Only	10.3%	9.5%	9.9%
2024 Estimated Bachelors Degree Only	31.5%	30.9%	27.7%
2024 Estimated Graduate Degree	17.4%	18.7%	16.8%
Business			
2024 Estimated Total Businesses	256	698	2,535
2024 Estimated Total Employees	1,265	4,237	18,725
2024 Estimated Employee Population per Business	4.9	6.1	7.4
2024 Estimated Residential Population per Business	35.3	41.2	28.5

©2025, Sites USA, Chandler, Arizona, 480-491-1112 Demographic Source: Applied Geographic Solutions 11/2024, TIGER Geography - RS1

