



For sublease

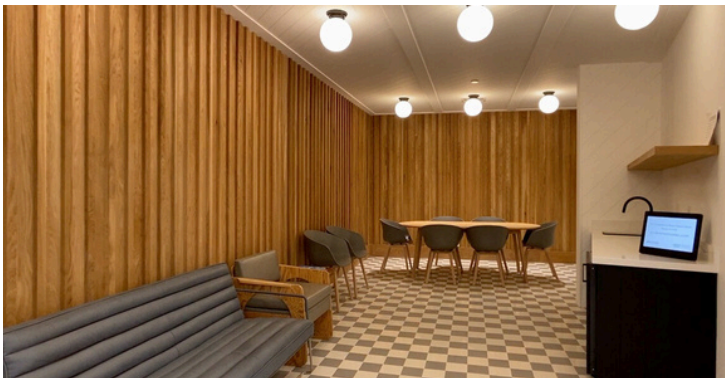
1111 Bayside Drive, Corona Del Mar, CA
4,803 RSF Available

 **JLL** SEE A BRIGHTER WAY

Jones Lang LaSalle Brokerage, Inc. | CA License #01856260

Property highlights

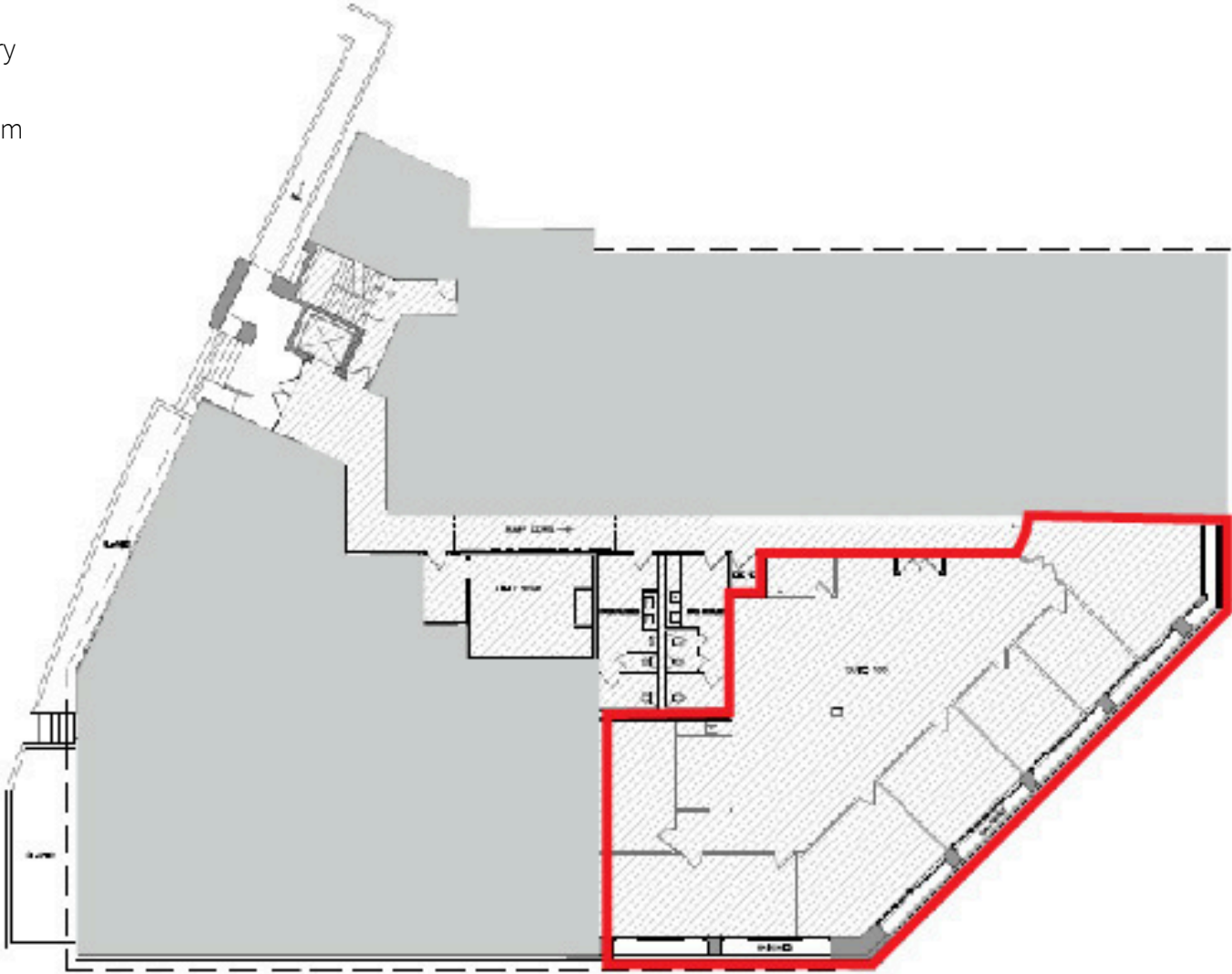
Location	1111 Bayside Drive, Corona Del Mar
Size	Suite 100: 4,803 RSF
Available	Approximately May 1, 2025
Term	3 years minimum
Rate	\$7.50 FSG
Highlights	<ul style="list-style-type: none">• 5 perimeter offices• 1 conference room• TIA available• Harbor views• Operable windows• Walking distance to Balboa Island• Free parking



Floorplan

Suite 100: 4,803 RSF

- Double door entry
- 5 offices
- 1 conference room
- 1 break area
- IT server room
- Open bull pen



HARBOR

Thank you

About JLL

Although information has been obtained from sources deemed reliable, JLL does not make any guarantees, warranties or representations, express or implied, as to the completeness or accuracy as to the information contained herein. Any projections, opinions, assumptions or estimates used are for example only. There may be differences between projected and actual results, and those differences may be material. JLL does not accept any liability for any loss or damage suffered by any party resulting from reliance on this information. If the recipient of this information has signed a confidentiality agreement with JLL regarding this matter, this information is subject to the terms of that agreement. ©2024. Jones Lang LaSalle IP, Inc. All rights reserved.

Jason Lantgen
Managing Director
RE Lic. #01819454
+1 949 885 2946
jason.lantgen@jll.com