



For Sale or Lease

730 W. Main Street
Farmington, NM

Property Specifications

BUILDING SIZE

28,158 SF

PARCEL SIZE

2.39 AC

ZONING

GC



About the Property

- Unique opportunity to acquire the only vacant box/anchor space over 10K SF in the market
- Direct access & visibility on Main Street with nearly 15,000 vehicles passing the site each day
- Prime Downtown location within a historic area that has high resident and tourist traffic
- Zoned General Commercial which allows for various uses
- Potential city incentives
- Located in a Metro Redevelopment Area (MRA)

Traffic Counts

W Main Street	14,847 VPD
W Broadway	11,098 VPD

Year: 2025 | Source: Esri

Demographics

	3 Mile	5 Miles	10 Miles
Population	29,040	44,563	69,672
Daytime Population	34,813	52,251	75,208
Avg. Household Income	\$81,648	\$85,737	\$88,047
Estimated Households	10,878	16,034	24,460

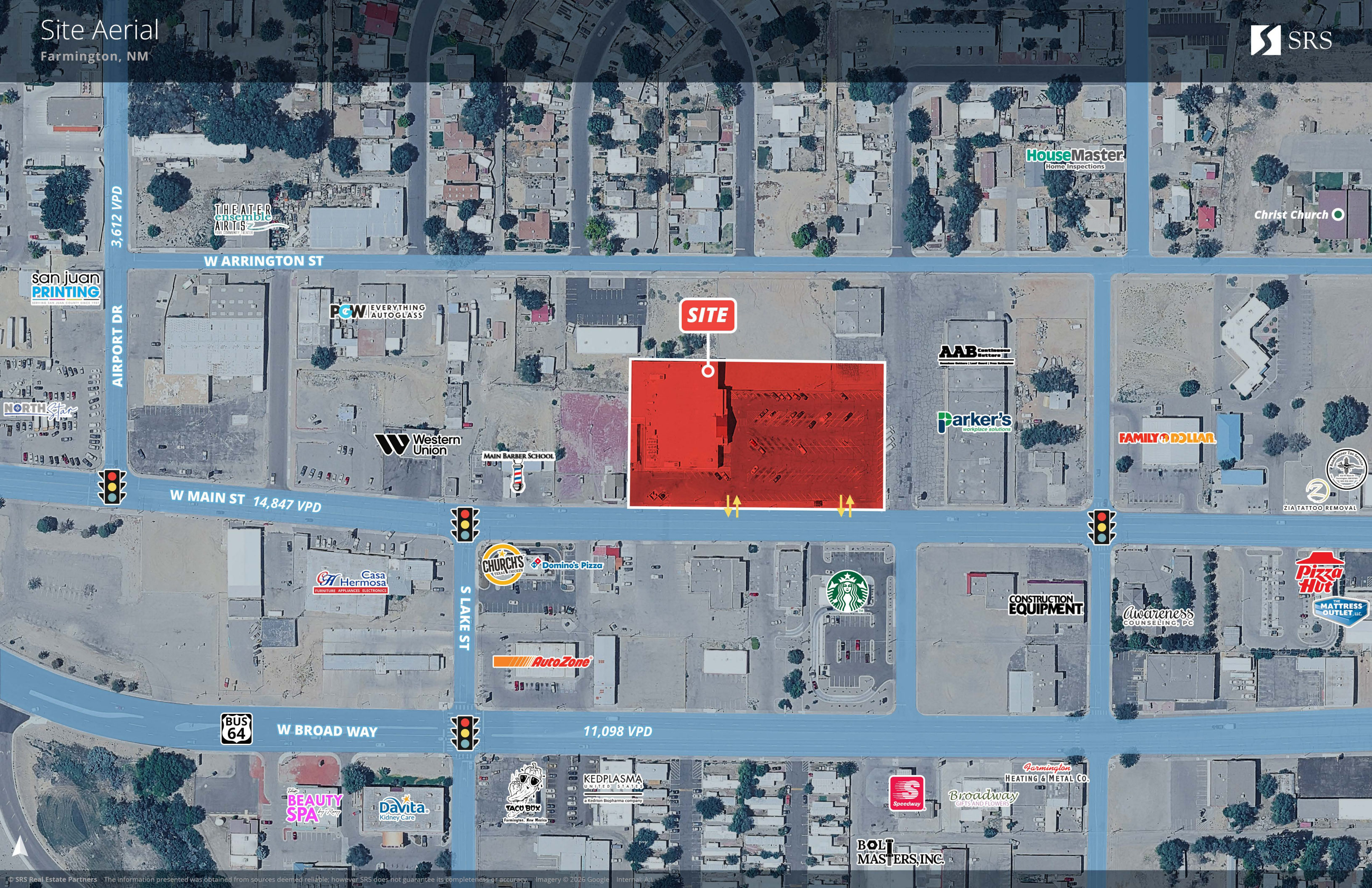
Year: 2025 | Source: esri

JOE BECK

303.295.4835 | joe.beck@srsre.com

TONY PIERANGELI

303.390.5257 | tony.pierangeli@srsre.com



W ARRINGTON ST

W MAIN ST 14,847 VPD

W BROAD WAY

11,098 VPD

SITE

san juan PRINTING

THEATER ensemble ARTS

HouseMaster Home Inspections

Christ Church

PCW EVERYTHING AUTOGLASS

Western Union

MAIN BARBER SCHOOL

AAB

Parker's workplace solutions

FAMILY DOLLAR

ZIA TATTOO REMOVAL

Casa Hermosa FURNITURE APPLIANCES ELECTRONICS

CHURCH'S TEXAS CHICKEN

Dominos Pizza



AutoZone

CONSTRUCTION EQUIPMENT

Awareness COUNSELING, PC

Pizza Hut

THE MATTRESS OUTLET, LLC



BEAUTY SPA

Davita Kidney Care

TACO BOX

KEDPLASMA UNITED STATES

Speedway

Broadway GIFTS AND FLOWERS

Farmington HEATING & METAL CO.

BOLT MASTERS, INC.



170

64

371

516

SITE

15,825 VPD

40,603 VPD

23,665 VPD

14,893 VPD

BUS 64

Tibbetts Middle School

Hills Academy

Exceptional Community Hospital - Farmington

San Juan Country Club

San Juan College

Pinon Hills Golf Course

Farmington Sports Complex

Farmington High School

San Juan Plaza

San Juan North-Rudolfo's

Animas Valley Mall

Four Corners Regional Airport

Altime Adventures

Staples

HARBOR FREIGHT

HOBBY LOBBY

San Juan Alternative Sentencing

ACE

SALLY cricket

Dillard's

Apache Elementary School

PAPA JOHN'S

Pizza Hut

JCPenney

San Juan Regional Medical Center

DUNKIN'

Fairfield

Bath & Body Works

OLD BLOOMFIELD HWY

COURTYARD

verizon

petco

Bluffview Elementary School

Hampton

amazon

THE HOME DEPOT

BEST BUY

SONIC

Walmart

cricket

verizon

metro

Wendy's

Burger King

Taco Bell

Domino's Pizza

Pizza Hut

Starbucks

Church's

McGee Park Convention Center



Area Snapshot

3 MILE

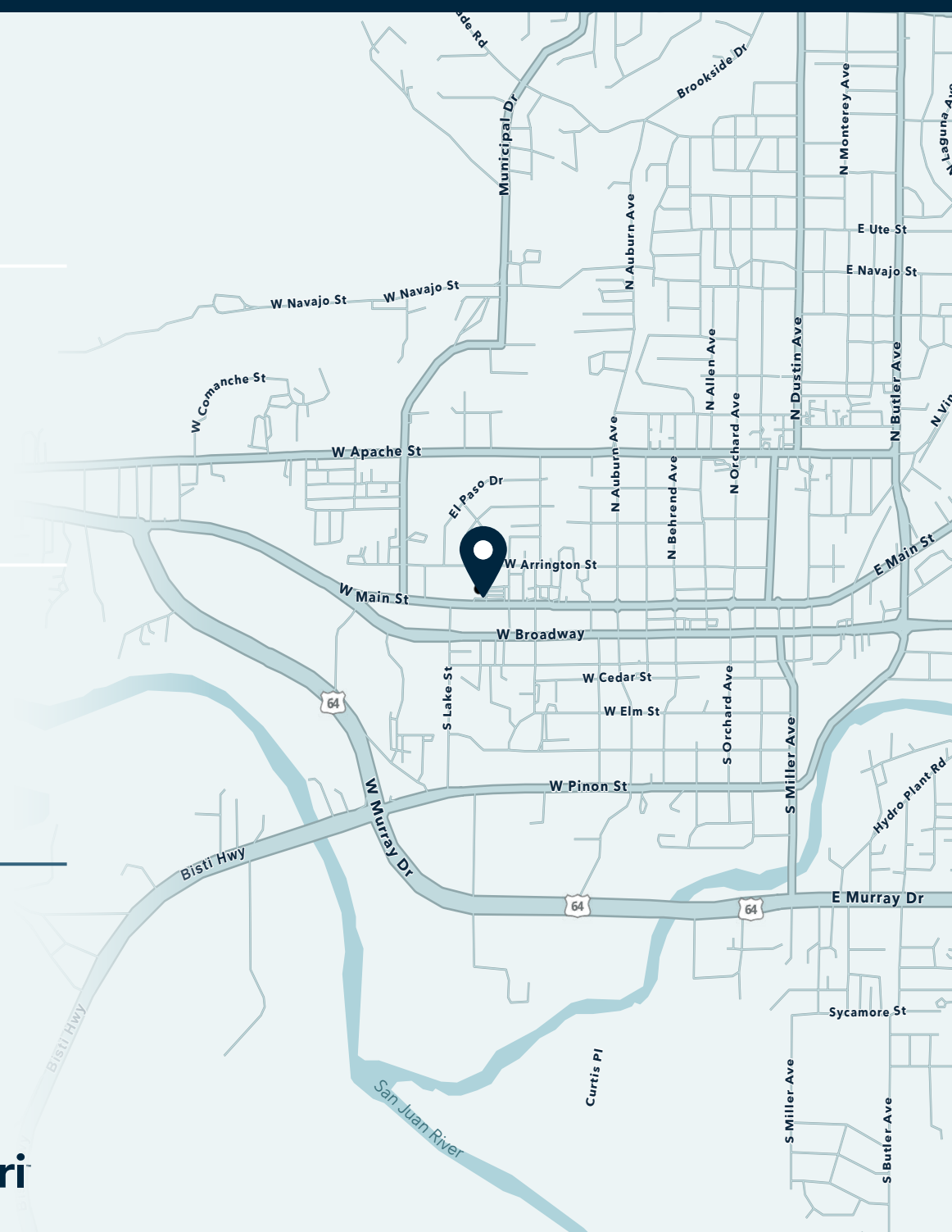
29,040 Population	34,813 Total Daytime Population	\$81,648 Average Household Income	10,878 Total Households
-----------------------------	--	--	--------------------------------------

5 MILES

44,563 Population	52,251 Total Daytime Population	\$85,737 Average Household Income	16,034 Total Households
-----------------------------	--	--	--------------------------------------

10 MILES

69,672 Population	75,208 Total Daytime Population	\$88,047 Average Household Income	24,460 Total Households
-----------------------------	--	--	--------------------------------------



Want more? Contact us for a complete demographic, foot-traffic, and mobile data insights report.



SRS REAL ESTATE PARTNERS

1875 Lawrence St, Suite 850
Denver, CO 80202
303.572.1800

[SRSRE.COM](https://www.srsre.com)

©2026 SRS. All Rights Reserved.

The information presented was obtained from sources deemed reliable;
however SRS does not guarantee its completeness or accuracy.