



Retail

# Doral Centre

## FOR LEASE

9525 Doral Blvd | Miami, FL 33178

Building Size: 35,033 SF  
Total Available: 1,200 SF

### For More Information

Valentina Tawil  
+1 786 973 9046  
vtawil@naimiami.com

Jeremy S. Larkin  
+1 786 260 0402  
jlarkin@naimiami.com

For more listings visit: [naimia-ftl.com/properties](http://naimia-ftl.com/properties)

**NAI** Miami  
Fort Lauderdale

# Doral Centre

9525 Doral Blvd | Miami, FL 33178



## Property Features

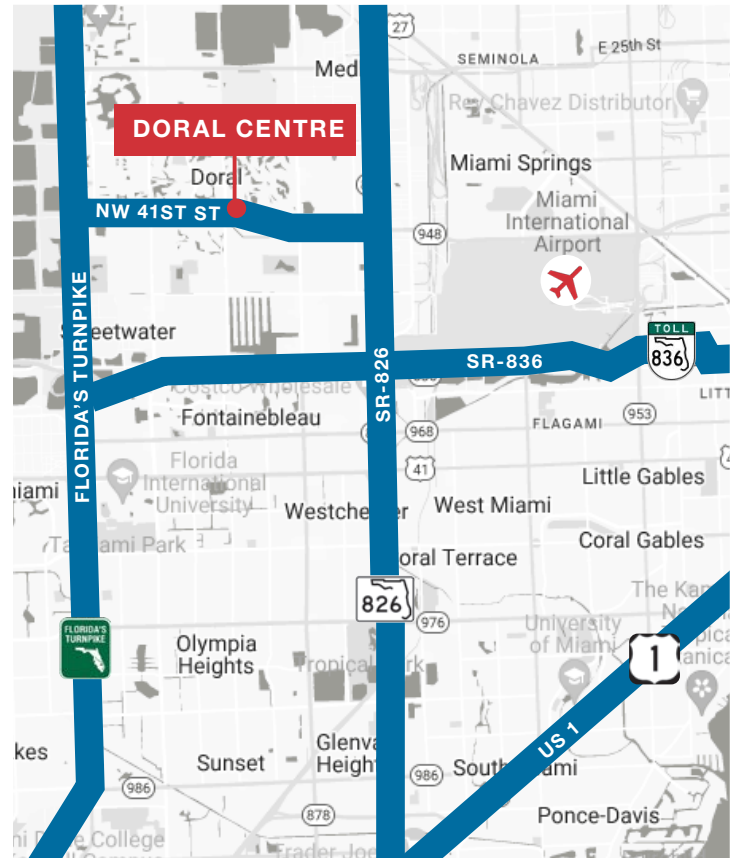
- 1,200 SF of retail space available
- Total Building Size: 35,033 SF
- Second generation restaurant

## Location Features

- Close to all the amenities including Downtown Doral, CityPlace, Atrium @ Doral, etc.
- Easy access via Palmetto Expressway (SR 826), Dolphin Expressway (SR 836), Florida's Turnpike via NW 41st Street
- Close to residential communities, hotels, restaurants, banks, office parks, retail centers, malls, industrial complexes, etc.

## Traffic Count

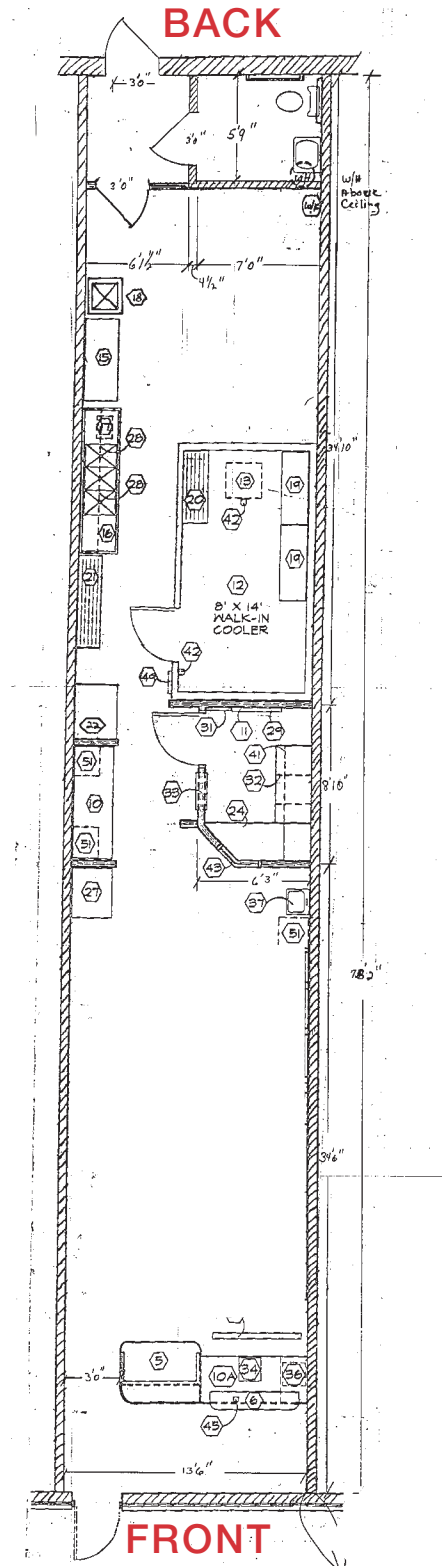
NW 41st Street	55,140
----------------	--------



# Floor Plan

9525 Doral Blvd | Miami, FL 33178

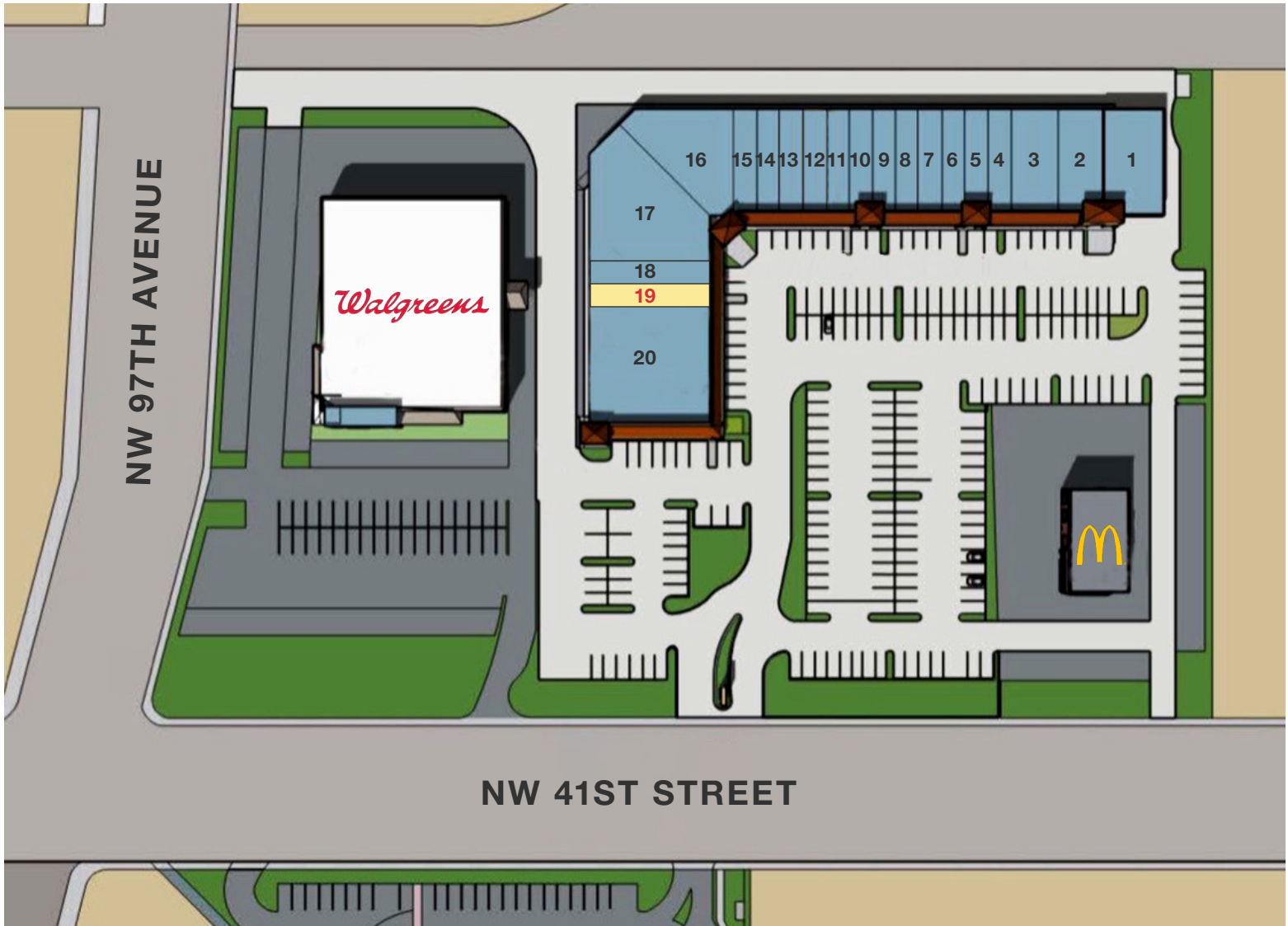
1,200 SF AVAILABLE





# Site Plan

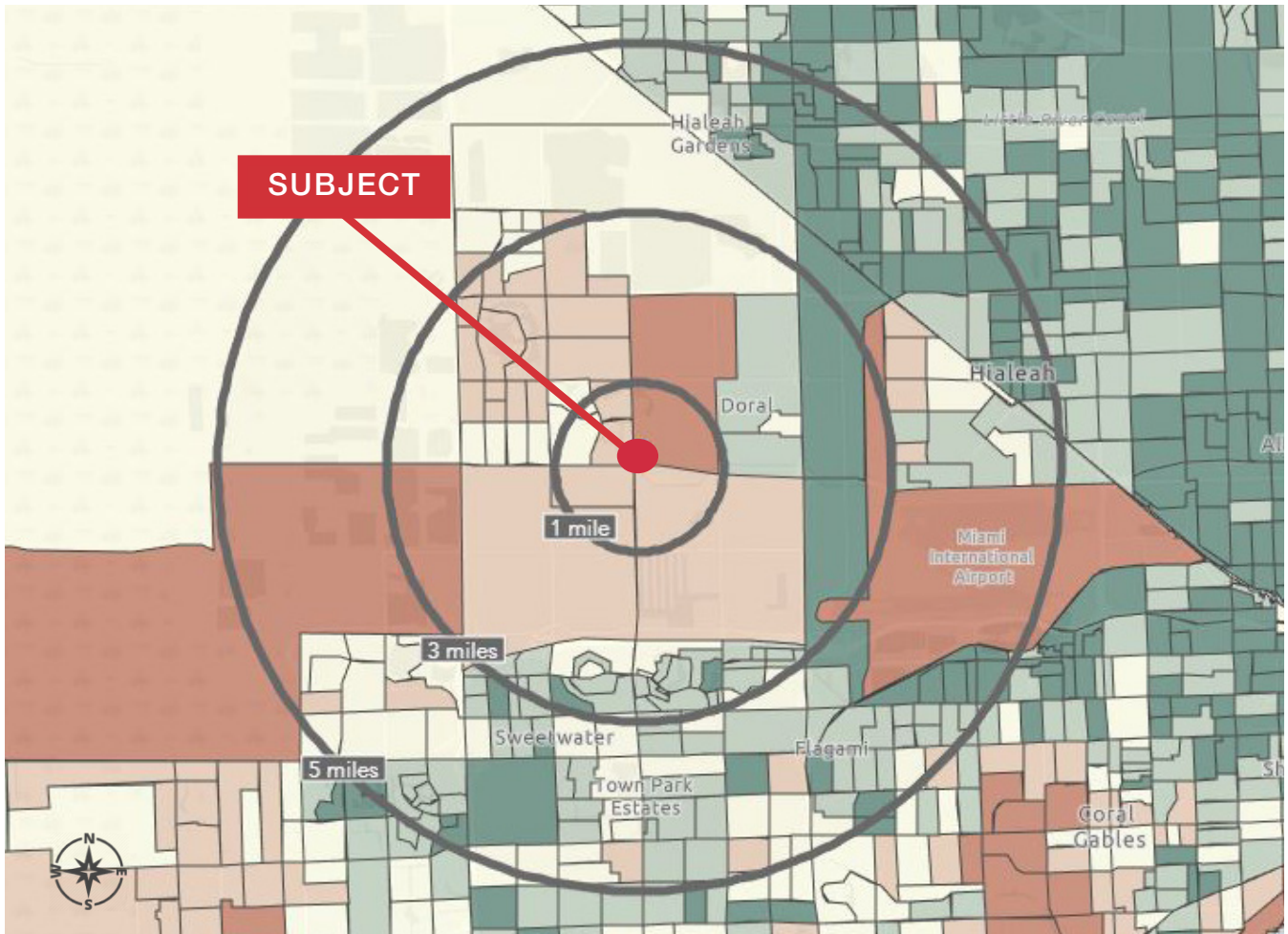
9525 Doral Blvd | Miami, FL 33178



- |                         |  |                               |
|-------------------------|--|-------------------------------|
| 1. OXXO Care Cleaners   | 10. Renaissance Hair Design & Day Spa        | 17. Aki Japanese Buffet       |
| 2. Rotir Group          | 11. Retoucherie Alterations                  | 18. Miami Medical Evaluations |
| 3. La Tremenda          | 12. Papa Johns                               | <b>19. 1,200 SF AVAILABLE</b> |
| 4. Monserrale Resturant | 13. Shawarma Express                         | 20. Pediatric Associates      |
| 5. Jade Optical         | 14. Miracle Leaf Health Centers              |                               |
| 6. Capriccio            | 15. Frank Aranda M.D. Primary Care Physician |                               |
| 7. Sushi Joe            | 16. Beauchamp Dental                         |                               |
| 8. Estrella Insurance   |  |                               |
| 9. Exquisite Jewlers    |  |                               |

# Demographics

9525 Doral Blvd | Miami, FL 33178



## Demographic Summary



RADIUS

	1 Mile	3 Miles	5 Miles
Population	12,871	125,851	396,081
Households	4,581	44,375	137,358
Families	3,516	32,453	102,750
Average Household Size	2.81	2.82	2.83
Median Age	39.2	39.2	42.6
Median Household Income	\$104,524	\$74,599	\$57,023
Average Household Income	\$132,626	\$95,609	\$79,938

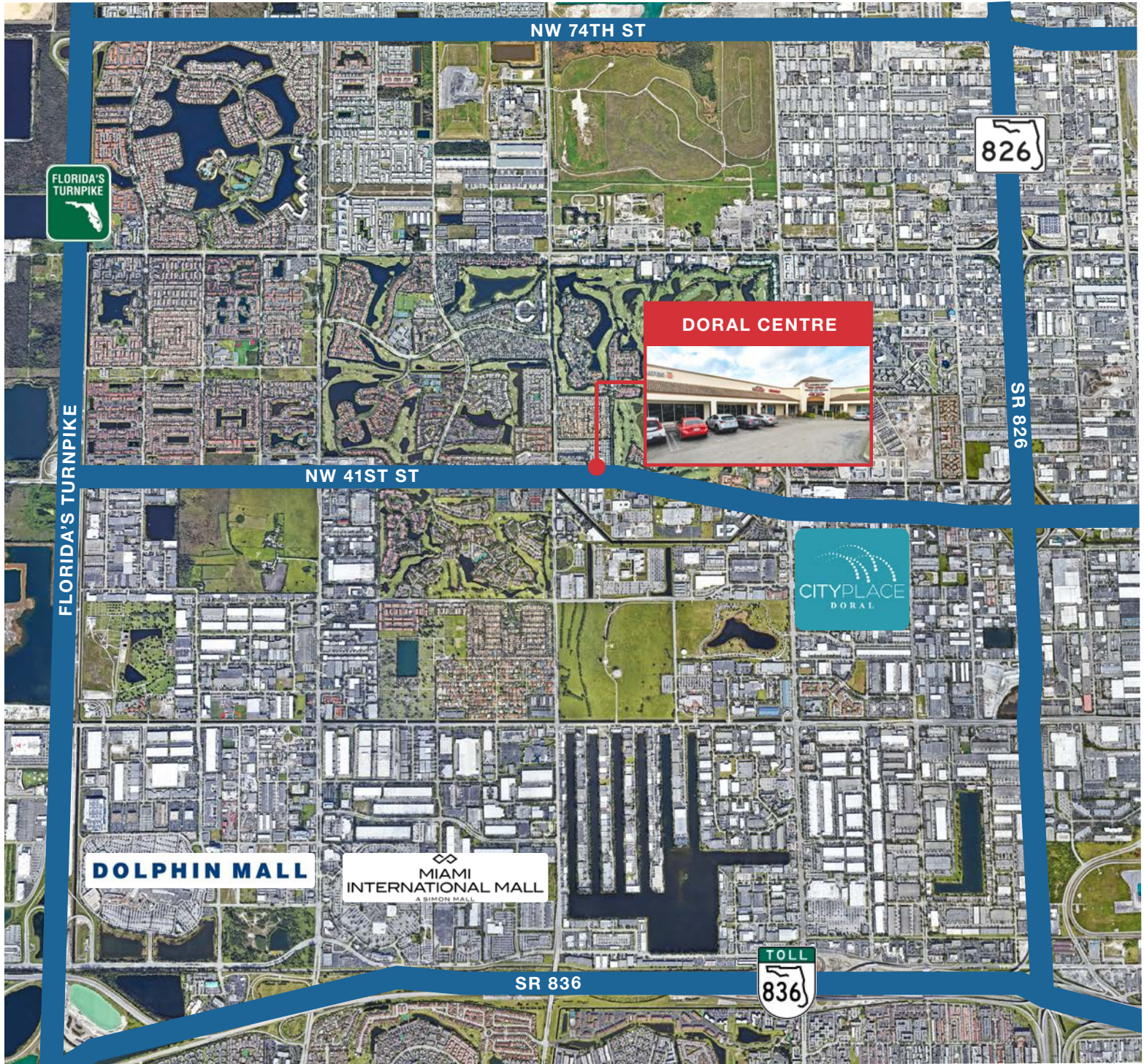
## Average Household Income





# Aerial Map

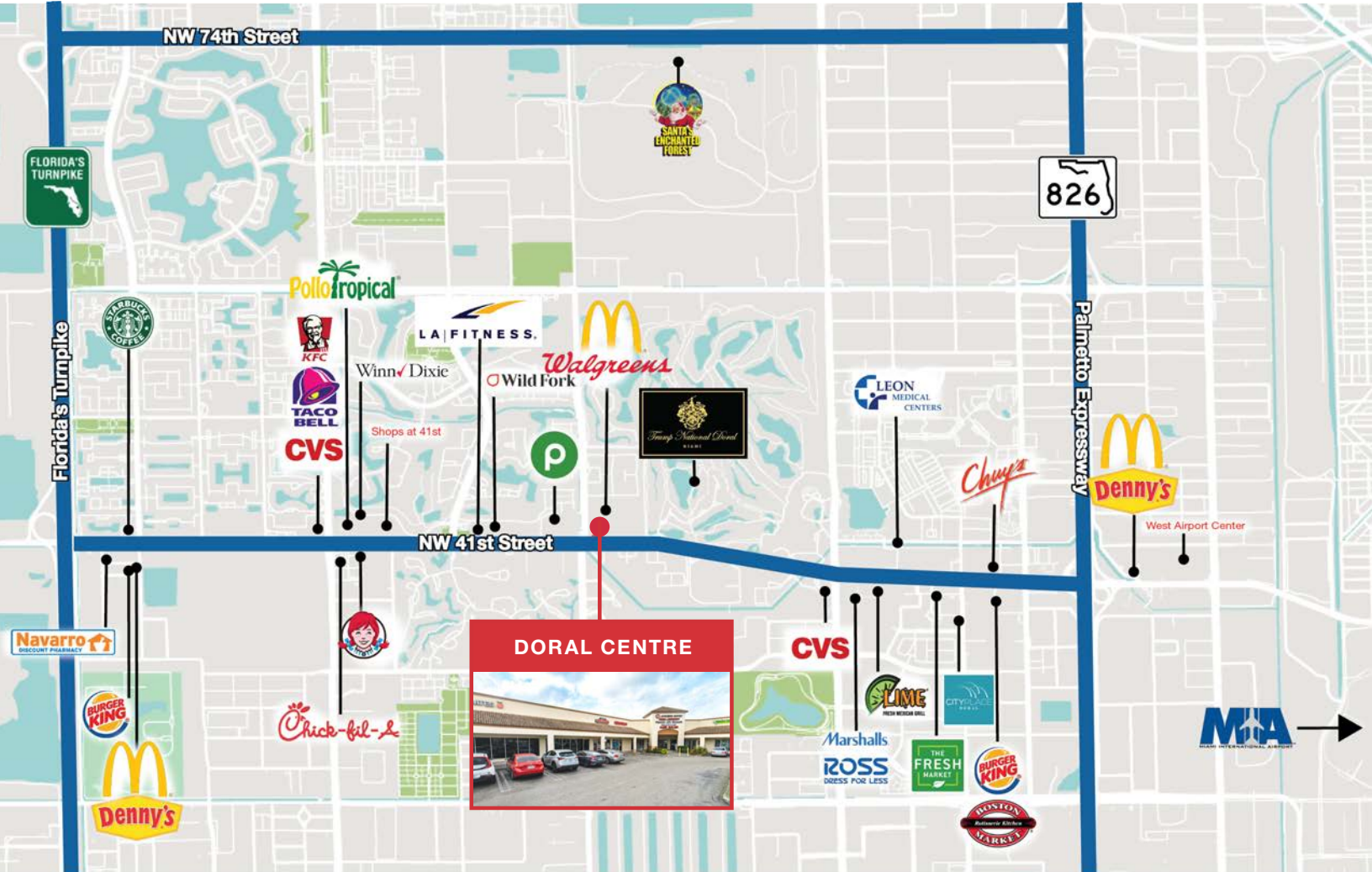
9525 Doral Blvd | Miami, FL 33178





# Retail Map

9525 Doral Blvd | Miami, FL 33178



## For More Information

Valentina Tawil

+1 786 973 9046

vtawil@naimiami.com

Jeremy S. Larkin

+1 786 260 0402

jlarkin@naimiami.com