

IRONBRIDGE MEDICAL

11601 Ironbridge Road | Chesterfield, VA

MEDICAL OFFICE FOR LEASE



AMY BRODERICK
Senior Vice President
804 344 7189
amy.broderick@thalhimer.com

KATE HOSKO
Vice President
804 344 7169
kate.hosko@thalhimer.com



IRONBRIDGE MEDICAL

Chesterfield, VA



AVAILABILITY

SUITE 101 - 4,090 RSF
SUITE 103 - 4,393 RSF
SUITE 209 - 1,251 RSF

- Excellent parking, covered drop off areas
- Conveniently located along Rt. 10
- Suite 101 offers a private exterior entry with signage opportunity
- Current tenants include Bon Secours Family Practice, Virginia Eye Institute, Centra VA Dental Care, NextBio Research Labs

DEMOGRAPHICS

	1 MILE	3 MILES	5 MILES
Population	4,629	30,969	78,081
Est. Households	2,043	12,244	29,370
Avg. Household Income	\$108,534	\$115,038	\$117,526
Daytime Population	4,918	31,040	67,394

HIGHLIGHTS



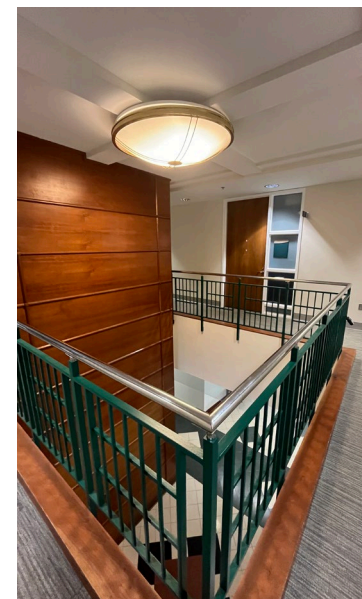
78,081
POPULATION



\$117,526
AVERAGE
INCOME



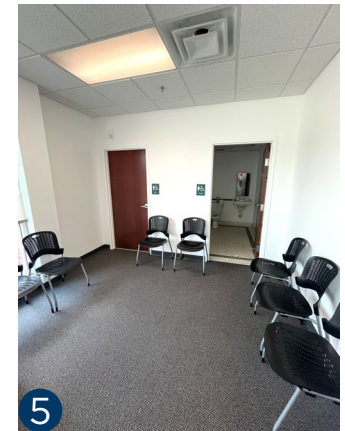
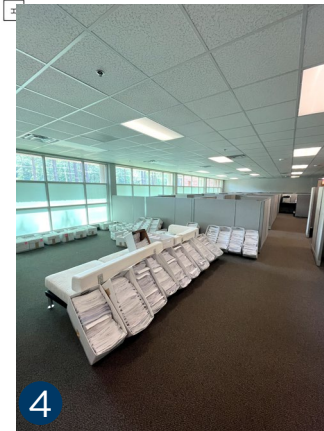
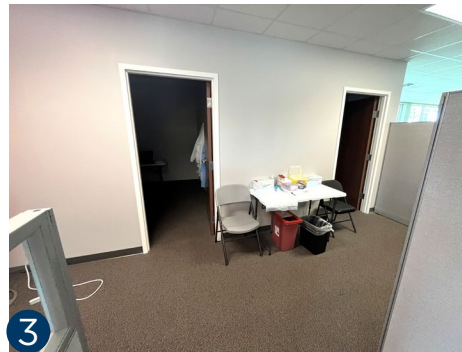
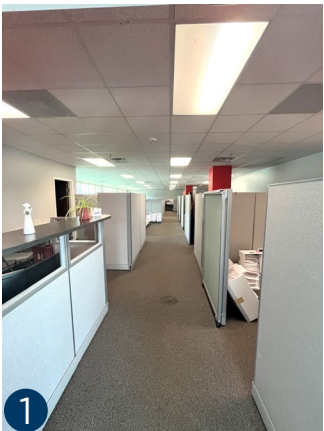
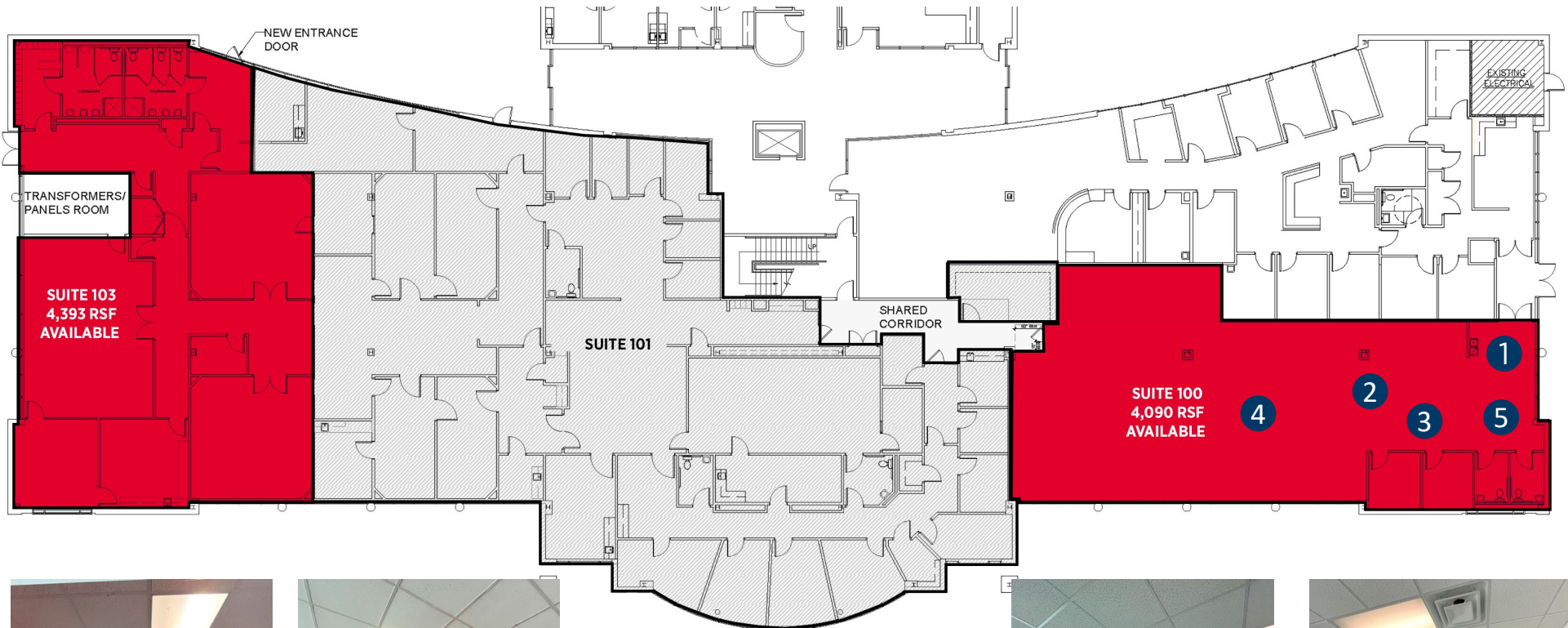
67,394
DAYTIME
POPULATION



IRONBRIDGE MEDICAL

Chesterfield, VA

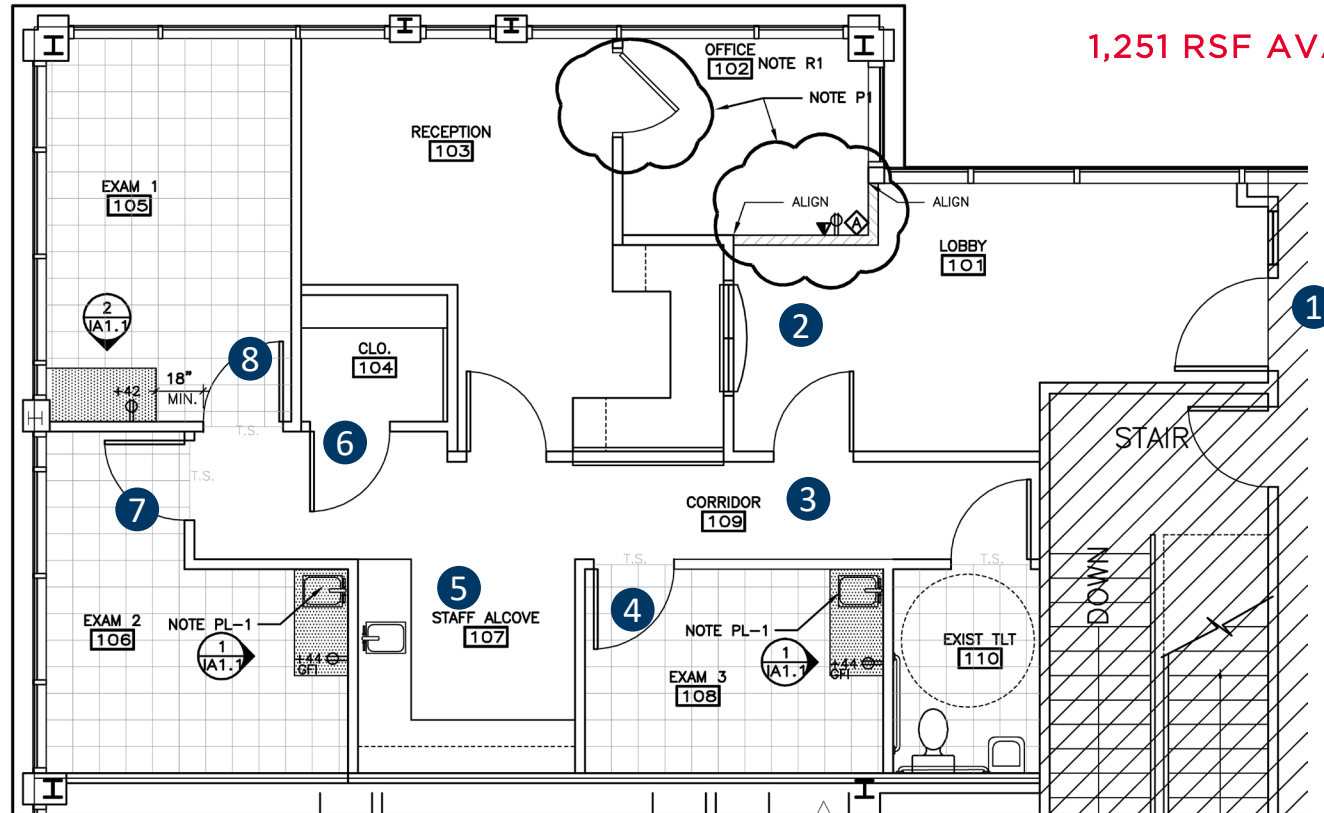
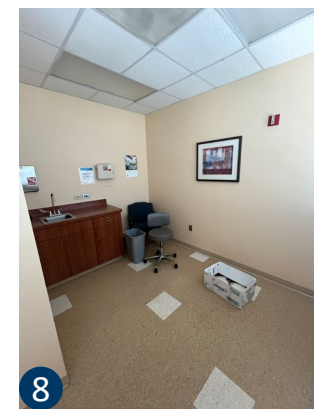
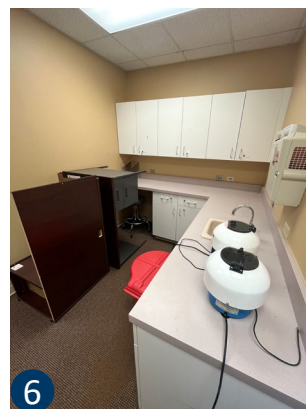
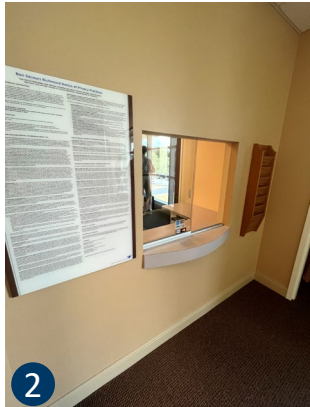
SUITE 100 - 4,090 RSF
SUITE 103 - 4,393 RSF



IRONBRIDGE MEDICAL

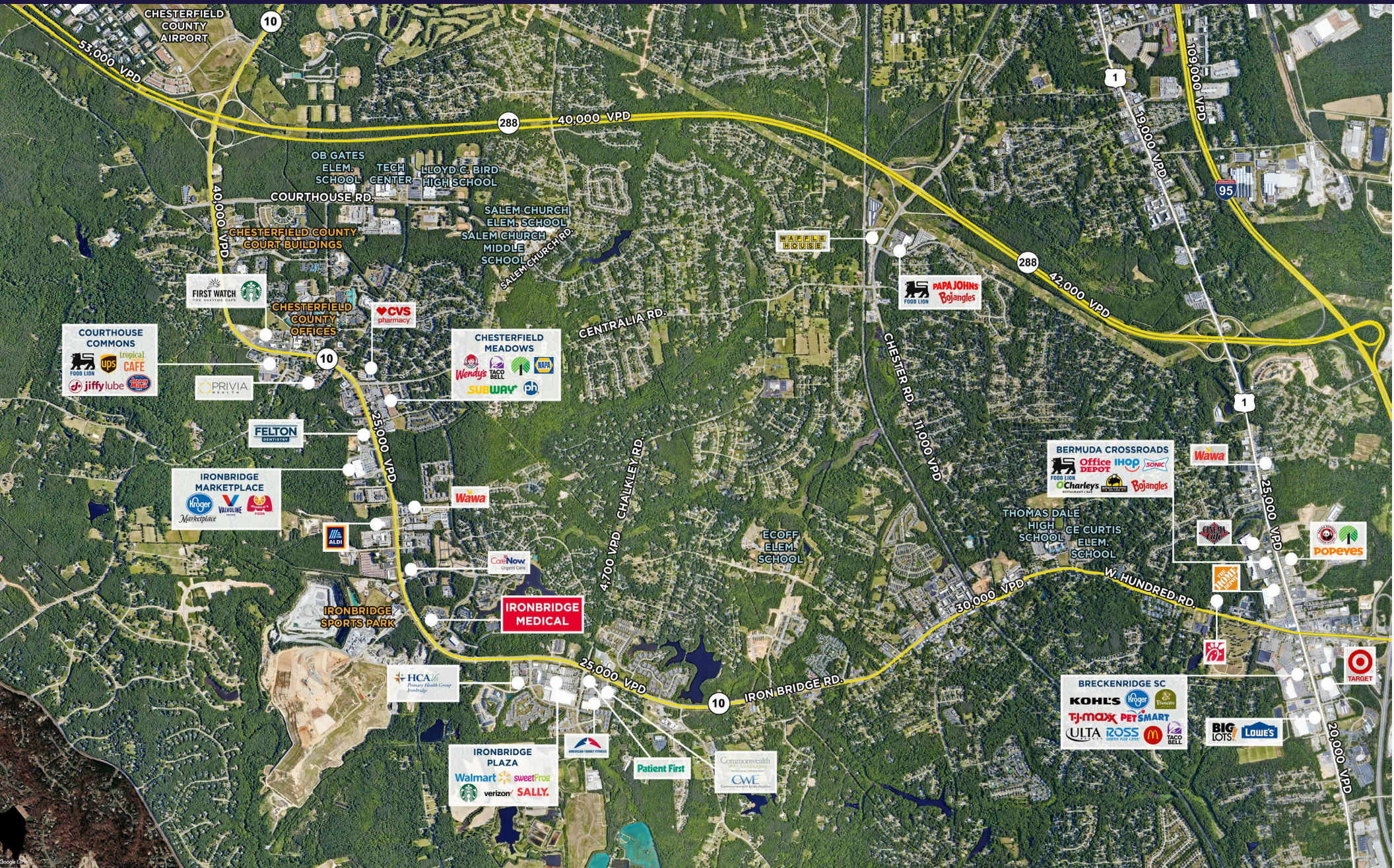
Chesterfield, VA

1,251 RSF AVAILABLE



IRONBRIDGE MEDICAL

Chesterfield, VA



IRONBRIDGE MEDICAL

11601 Ironbridge Road | Chesterfield, VA



AMY BRODERICK
Senior Vice President
804 344 7189
amy.broderick@thalhimer.com

KATE HOSKO
Vice President
804 344 7169
kate.hosko@thalhimer.com



Independently Owned and Operated / A Member of the Cushman & Wakefield Alliance

Cushman & Wakefield | Thalhimer © 2025. No warranty or representation, express or implied, is made to the accuracy or completeness of the information contained herein, and same is submitted subject to errors, omissions, change of price, rental or other conditions, withdrawal without notice, and to any special listing conditions imposed by the property owner(s). As applicable, we make no representation as to the condition of the property (or properties) in question.