

# 9437

DOUBLE DIAMOND PKWY

RENO NV

**SUITE 18 AVAILABLE FOR LEASE - 1,250 SF**



CBRE

# PROPERTY INFORMATION

## Office Suite | 1,250 SF Available for Lease

Suite has a modern, functional workspace with a reception area, open work area, two private offices, a kitchen/break room, beverage station, and private restroom —ideal for a variety of professional uses.

Additional amenities include a full-size refrigerator and beverage fridge. Tall ceilings and abundant natural light throughout.

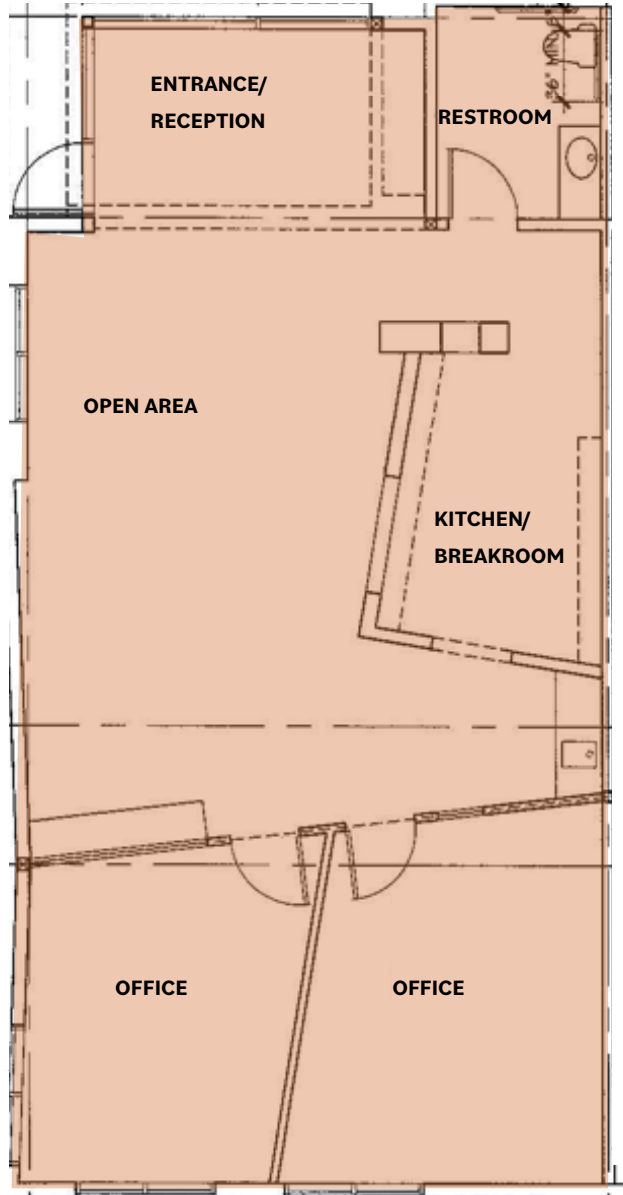
Located in the heart of the South Meadows submarket, this property offers convenient access to a wide range of nearby amenities, including restaurants, retail, office and industrial parks, as well as surrounding residential neighborhoods.



- › 9437 Double Diamond Pkwy - Suite 18
- › 1,250 SF Available
- › \$2.25 PSF/Modified Gross
- › Prime South Reno Location
- › Minutes from 1-580 and Southeast Connector

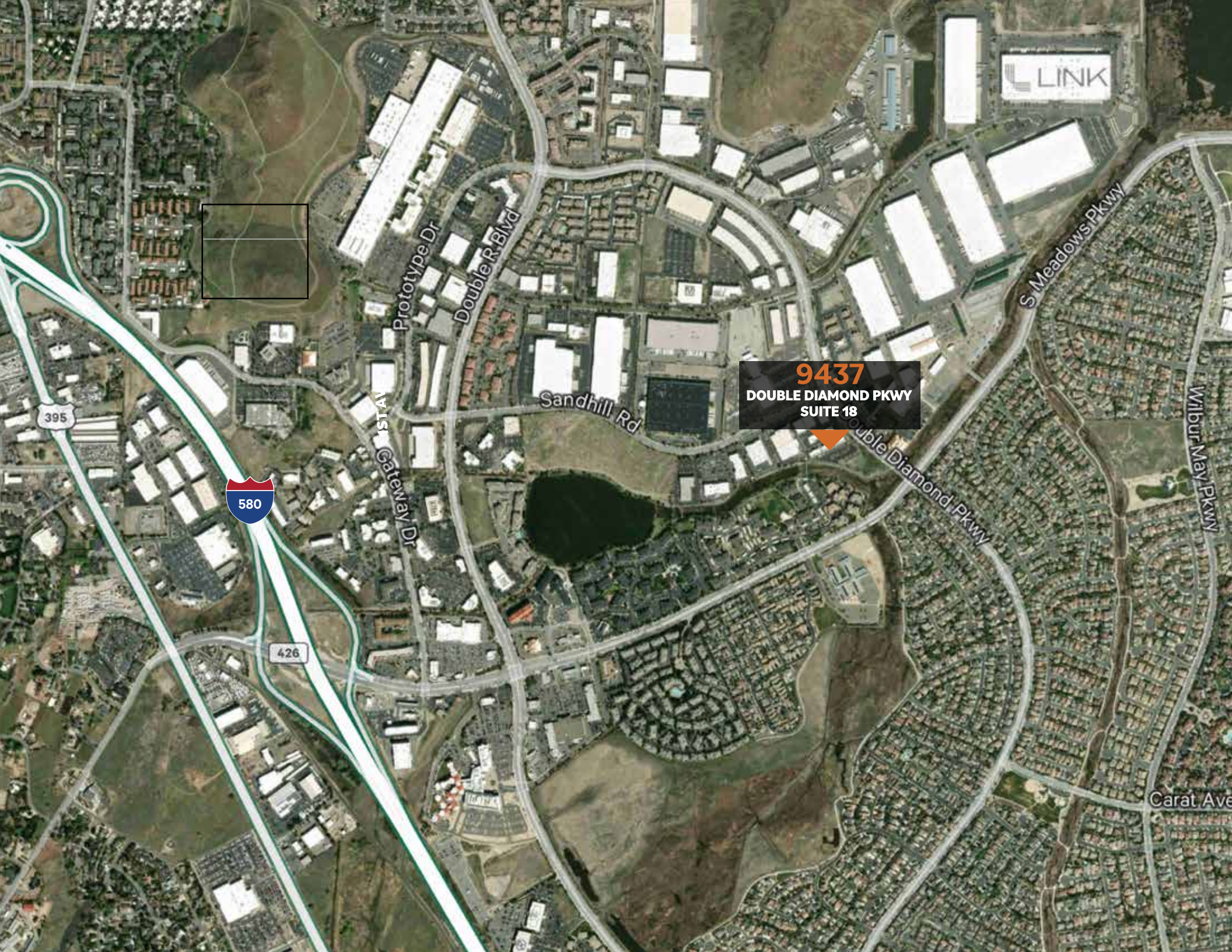
**FLOOR PLAN**  
**1,250 SF**

**SUITE 18**



# SUITE PHOTOS





**9437**  
**DOUBLE DIAMOND PKWY**  
**SUITE 18**

395

580

426

Prototype Dr

Double R Blvd

Sandhill Rd

S Meadows Pkwy

Wilbur May Pkwy

Carat Ave

Gateway Dr

Double Diamond Pkwy

# 9437

## DOUBLE DIAMOND PARKWAY

### SUITE 18

#### CONTACT US

**David Woods, CCIM**

Senior Vice President  
+1775 321 4459  
david.woods@cbre.com  
Lic. S.0072655

**Matt Grimes, CCIM**

Senior Vice President  
+1775 356 6290  
matt.grimes@cbre.com  
Lic. S.0072644

**Leahna Chapman**

Senior Associate  
+1775 823 6937  
leahna.chapman@cbre.com  
Lic. S.0183267

© 2026 CBRE, Inc. All rights reserved. This information has been obtained from sources believed reliable, but has not been verified for accuracy or completeness. You should conduct a careful, independent investigation of the property and verify all information. Any reliance on this information is solely at your own risk. CBRE and the CBRE logo are service marks of CBRE, Inc. All other marks displayed on this document are the property of their respective owners, and the use of such logos does not imply any affiliation with or endorsement of CBRE. Photos herein are the property of their respective owners. Use of these images without the express written consent of the owner is prohibited.

**CBRE**