

**±3,226 SF Full Floor  
Office Sublease**

## 727 Atlantic Avenue Boston, MA

NAI Parsons Commercial Group is pleased to announce the opportunity to sublease a 3,226 SF full-floor office suite in a professionally managed Class B building just seconds from South Station and Chinatown.



### **±3,226 SF Full-Floor Office Sublease**

Second floor space featuring eight private offices, a conference room, ±1,000 SF of central open area, kitchenette, and in-suite restrooms



### **Below-Market Rental Rates**

Rare opportunity to secure value in a premier downtown Boston location



### **Unmatched Transit Connectivity**

Steps from South Station with immediate access to Commuter Rail, Amtrak, and bus lines, plus walkable dining and amenities in the surrounding downtown corridor

### **FOR MORE INFORMATION:**

 **JASON CORT**, Vice President - AIS | CRE

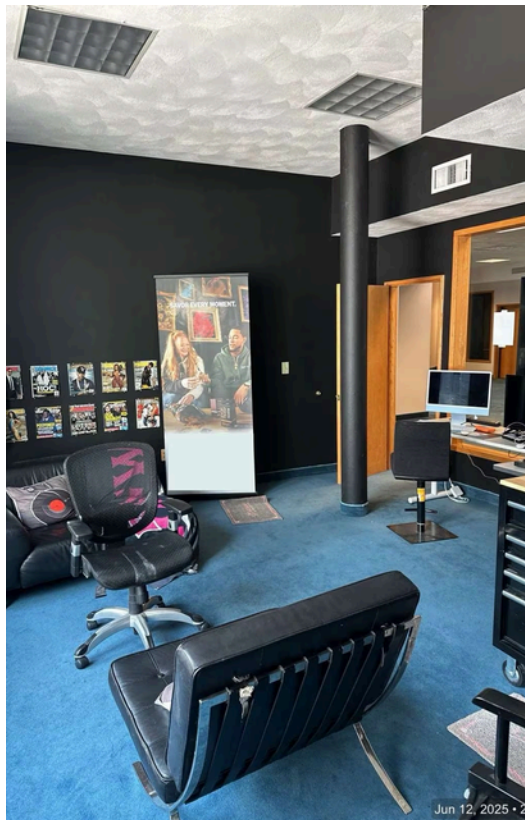
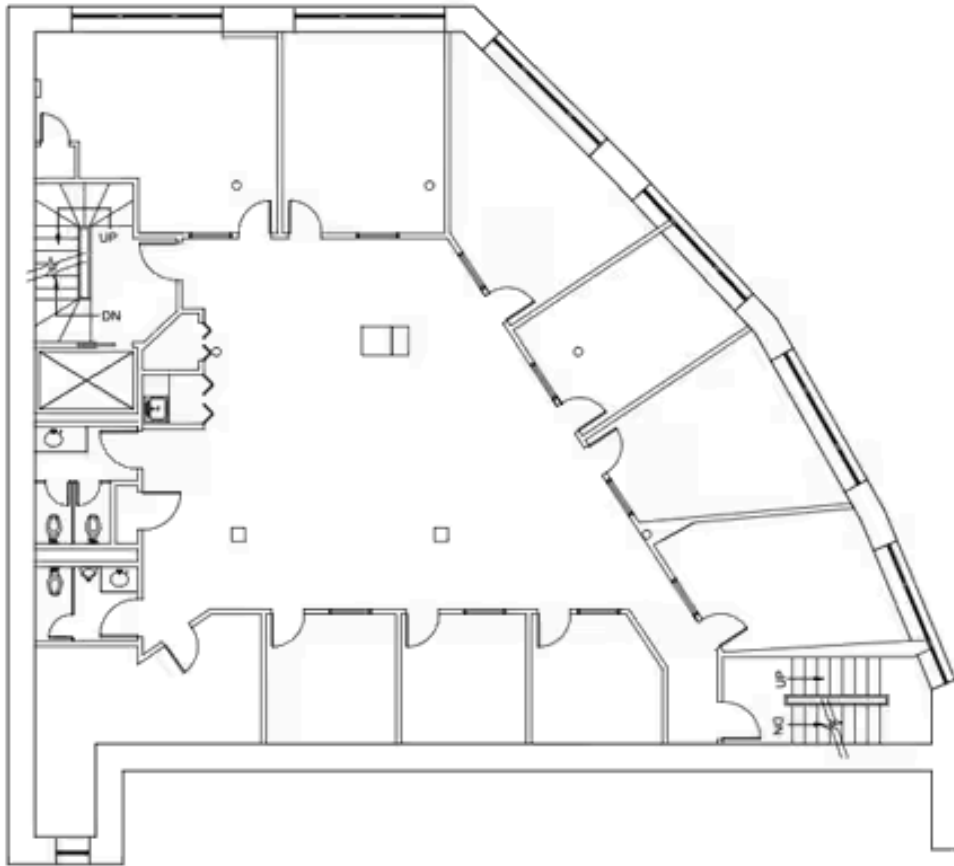
o: 781.838.1328

e: [jcort@aiscre.com](mailto:jcort@aiscre.com)

 **MATT QUINLAN**- Managing Director, Brokerage

o: 508.820.2700

e: [mquinlan@parsonscre.com](mailto:mquinlan@parsonscre.com)





727 Atlantic Avenue  
Boston, MA

## Premier Downtown Location Adjacent to South Station & Chinatown

727 Atlantic Avenue is ideally positioned in downtown Boston, directly adjacent to South Station and steps from Chinatown. The property offers immediate access to the Red Line, Commuter Rail, Amtrak, and multiple bus routes, making it one of the most transit-connected locations in the city. Surrounded by dining, hotels, retail, and major business centers, this address provides convenience and energy at the core of Boston's urban landscape.



**231,204**  
2024  
Population



**\$137,805**  
Average  
Household Income



**452,724**  
Daytime  
Employees



**\$3.6B**  
Total Specified  
Consumer Spending

*Demographic Data Within 2-Mile Radius (Source: AlphaMap)*



We obtained the information above from sources we believe to be reliable. However, we have not verified its accuracy and make no guarantee, warranty or representation about it. It is submitted subject to the possibility of errors, omissions, change of price, rental or other conditions, prior sale, lease or financing, or withdrawal without notice. We include projections, opinions, assumptions or estimates for example only, and they may not represent current or future performance of the property. You and your tax and legal advisors should conduct your own investigation of the property and transaction.