

FOR LEASE

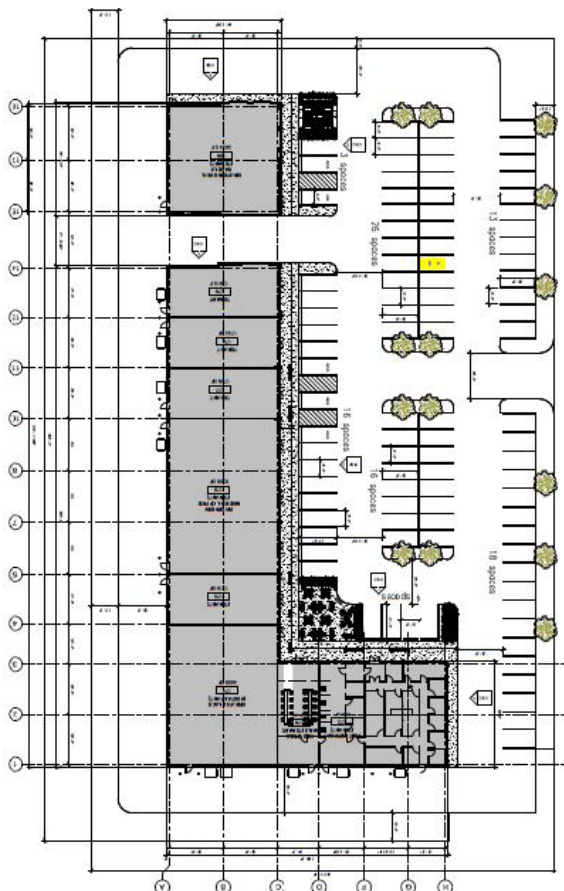
# SHAMROCK RETAIL CENTER

17655 SHAMROCK BLVD, WESTFIELD, IN 46074



## PROPERTY INFO

- + Located right off of 31 next to Riverview Hospital and Westfield High school on Shamrock Blvd.
- + Only .08 miles from Grand Park which hosts over 2 million visitors per year and is the home of the Indianapolis Colts Training Center
- + Less than 1/2 mile from downtown Westfield and the new Grand Junction Plaza and outdoor amphitheater
- + With a 2020 population of 47,923, it is the 23rd largest city in Indiana
- + Average HH income \$104,000
- + There are just over 300 teachers and 7,000 students that are enrolled at the 9 Westfield Schools



FOR LEASE

# SHAMROCK RETAIL CENTER

17655 SHAMROCK BLVD, WESTFIELD, IN 46074

## Demographics

	3-Mile Radius	5-Mile Radius	7-Mile Radius
Population	39,660	99,881	174,146
Daytime Population	36,725	91,062	172,252
Households	14,385	36,377	64,768
Household Income	\$116,123	\$129,133	132,050

Source: Esri

## Traffic Counts

W. Main St.	17,141
Shamrock Blvd.	4,518

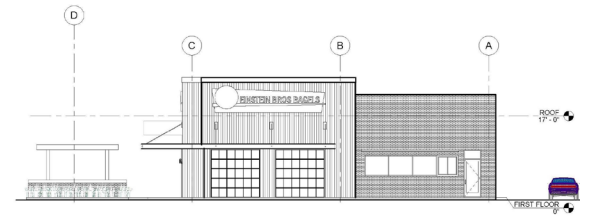
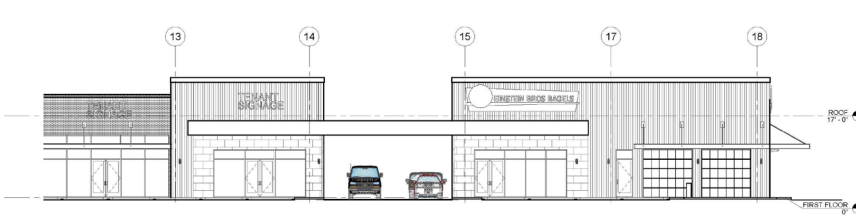
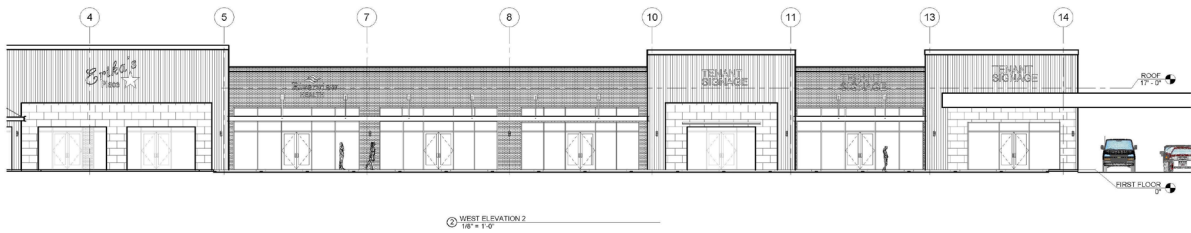
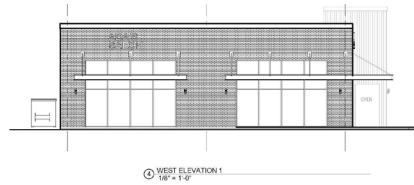
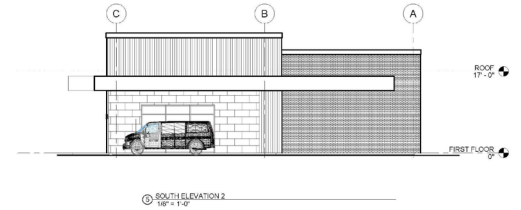
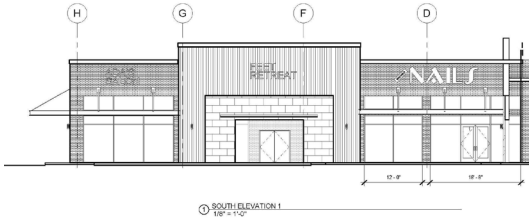
Source: INDOT



FOR LEASE

# SHAMROCK RETAIL CENTER

17655 SHAMROCK BLVD, WESTFIELD, IN 46074



## CONTACT US

### Steve Delaney

First Vice President  
+1 317 844 5313  
[Steve.Delaney@cbre.com](mailto:Steve.Delaney@cbre.com)

### Scott Wise

Vice President  
+1 317 613 3124  
[Scott.Wise@cbre.com](mailto:Scott.Wise@cbre.com)

© 2021 CBRE, Inc. All rights reserved. This information has been obtained from sources believed reliable, but has not been verified for accuracy or completeness. You should conduct a careful, independent investigation of the property and verify all information. Any reliance on this information is solely at your own risk. CBRE and the CBRE logo are service marks of CBRE, Inc. All other marks displayed on this document are the property of their respective owners, and the use of such logos does not imply any affiliation with or endorsement of CBRE. Photos herein are the property of their respective owners. Use of these images without the express written consent of the owner is prohibited.