



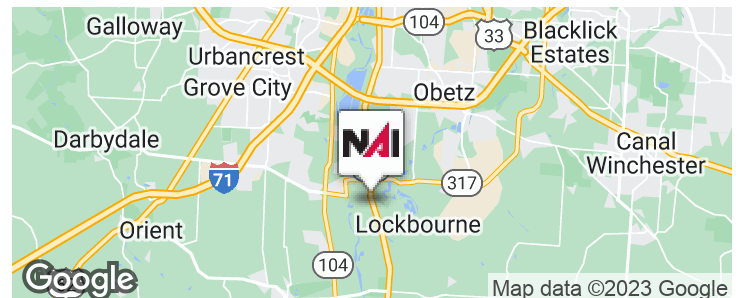
6251 S High Street

Lockbourne, Ohio 43137

Property Highlights

- 1,943 SF Restaurant Space
- Situated on 1.52 Acres
- Zoned Community Commercial
- Within a Designated Tax Incentive Opportunity Zone
- Located at the Signalized Intersection S High St & SR 665
- ±160 Feet of Frontage Along South High Street (SR 23)
- Strong Traffic Counts (Approx. 36,551 Vehicles Per Day)
- Perfect Location for Fast Food or Fast Casual Restaurants, Gas, Motel, etc.

Sale Price: \$700,000



For More Information

Dan Sheeran

O: 614 629 5216

dsheeran@ohioequities.com

Dan Sheeran, Jr.

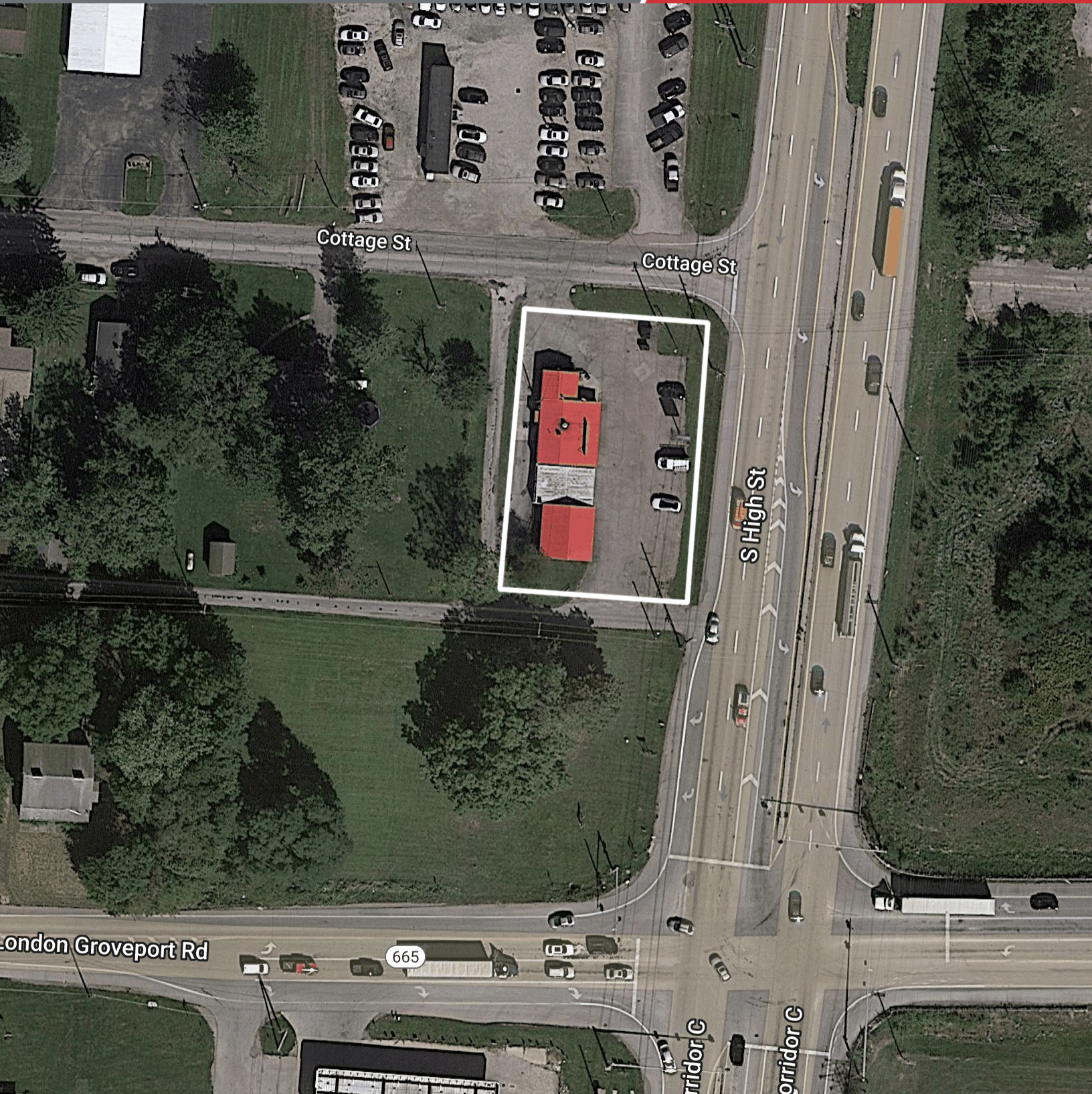
O: 614 629 5228

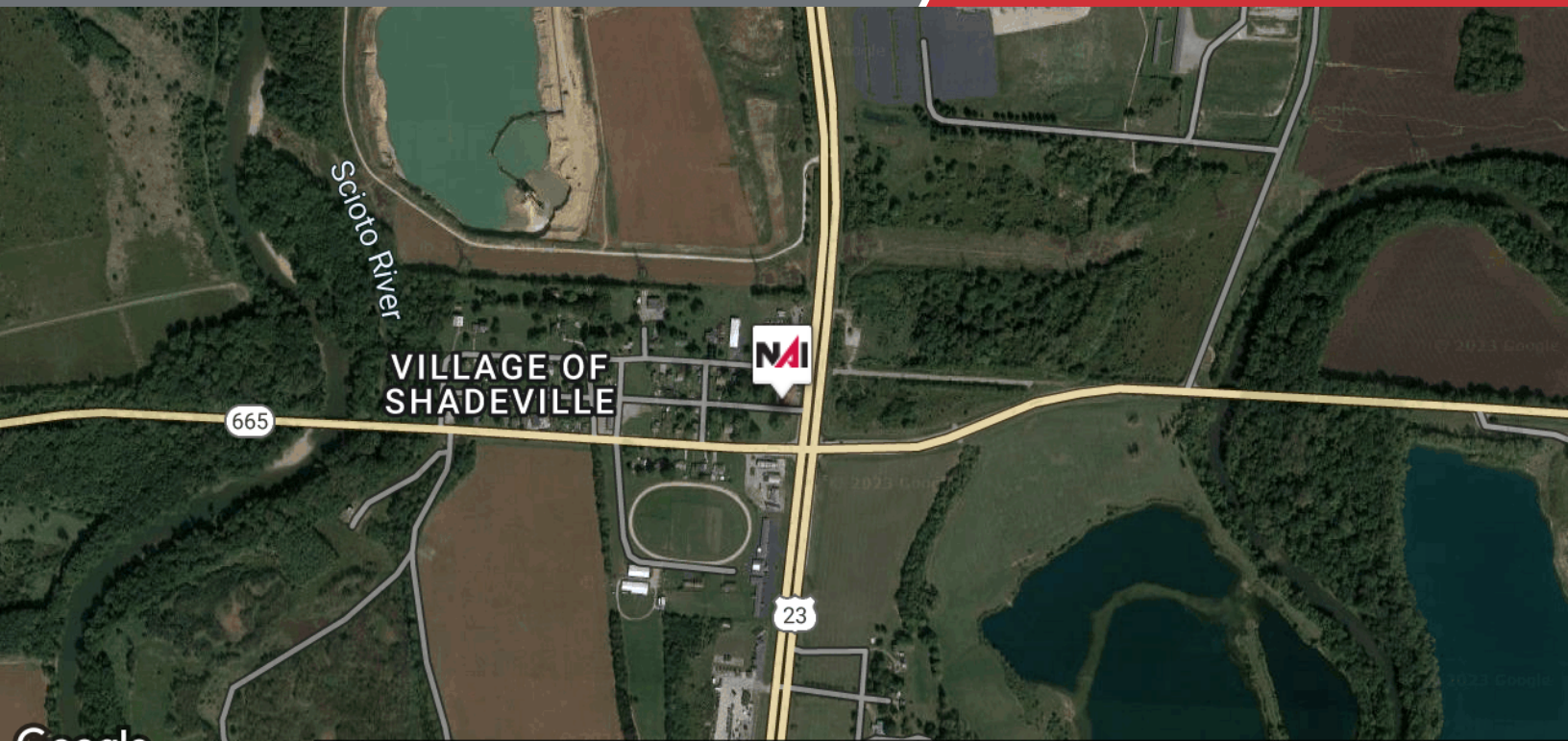
djsheeran@ohioequities.com

Mike Semon

O: 614 629 5217

msemon@ohioequities.com



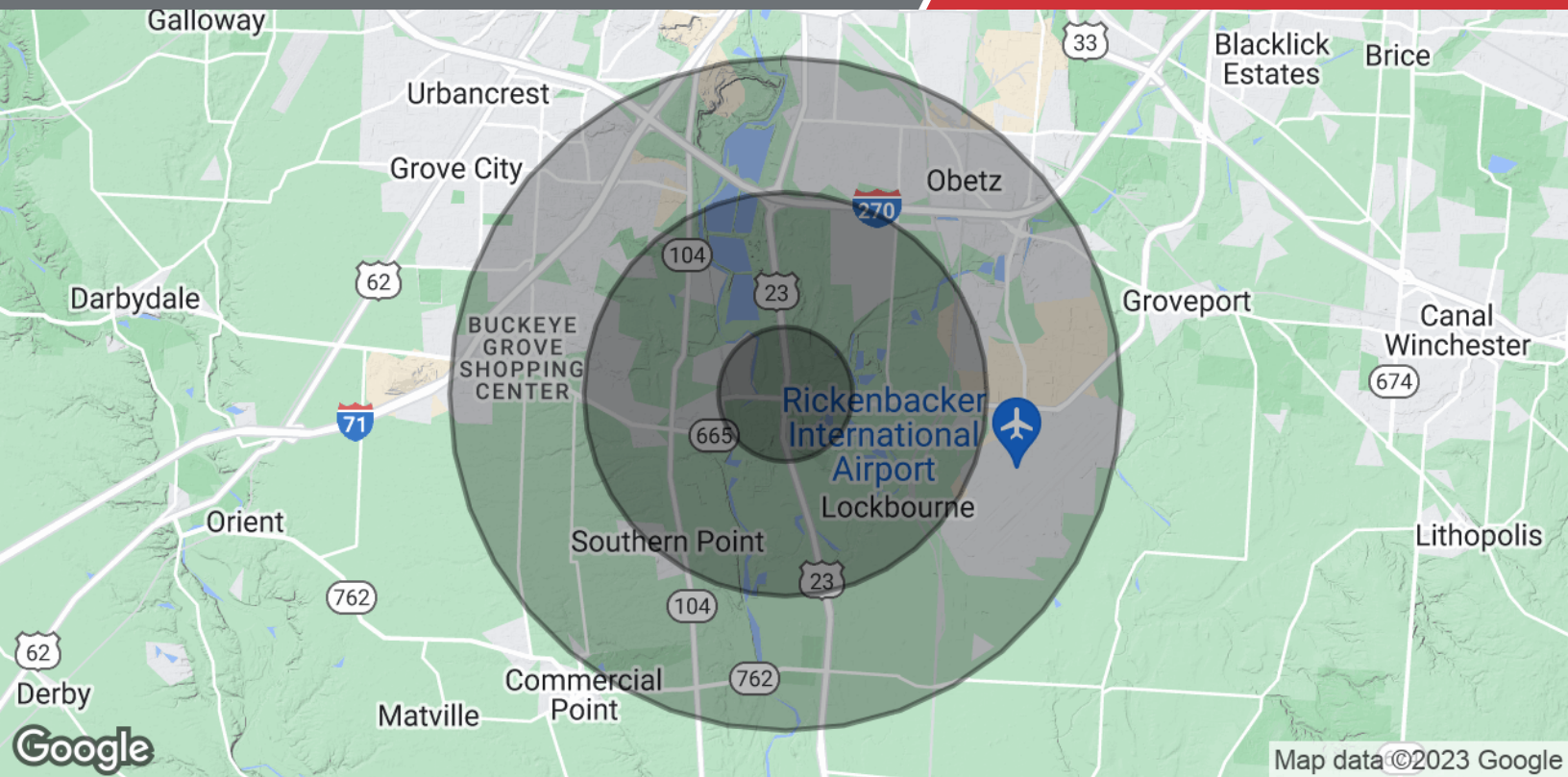


Map data ©2023 Imagery ©2023 Airbus, Maxar Technologies, U.S. Geological Survey, USDA/FPAC/GEO



Map data ©2023 Google

We obtained the information above from sources we believe to be reliable. However, we have not verified its accuracy and make no guarantee, warranty or representation about it. It is submitted subject to the possibility of errors, omissions, change of price, rental or other conditions, prior sale, lease or financing, or withdrawal without notice. We include projections, opinions, assumptions or estimates for example only, and they may not represent current or future performance of the property. You and your tax and legal advisors should conduct your own investigation of the property and transaction.



Population

	1 Mile	3 Miles	5 Miles
Total Population	755	10,941	55,463
Average Age	43.9	40.8	39.3
Average Age (Male)	43.6	39.9	37.0
Average Age (Female)	45.7	41.9	40.8

Households & Income

	1 Mile	3 Miles	5 Miles
Total Households	292	4,293	21,574
# of Persons per HH	2.6	2.5	2.6
Average HH Income	\$73,636	\$91,391	\$82,835
Average House Value	\$168,108	\$201,756	\$179,576

* Demographic data derived from 2020 ACS - US Census