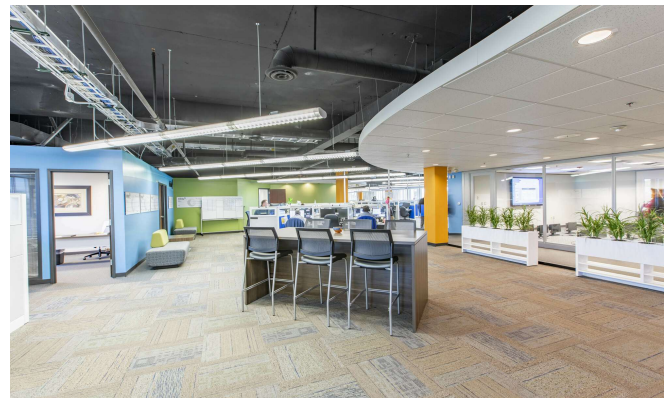
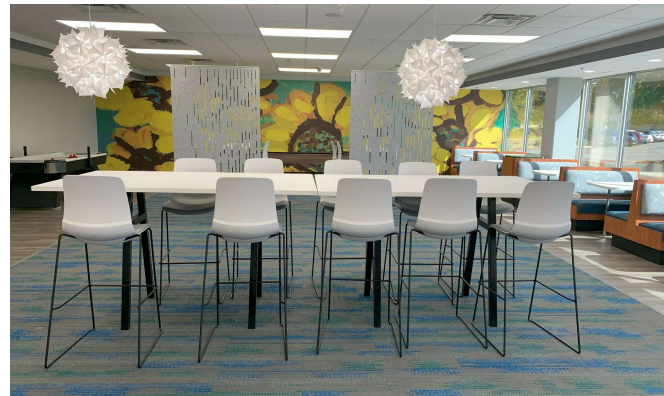


627 - 26,000 SF BINGHAM OFFICE CENTER



FOR LEASE



30600, 30700 & 30800 Telegraph Rd.

Bingham Farms, Michigan 48025

Property Highlights

- Several Suite Configurations Available Up to 26,000 SF Contiguous
- Move-In Ready Suites
- Amenities: Full-Service Cafeteria, Sundry Shop, Building Conference Room
- Signalized Access to Telegraph
- Ample, Well-Lit Surface Parking
- Walkable Amenities Include Restaurants, and Nearby Retail/Shopping, Grocery Store, Banks, Hotels
- Close Proximity to Expressways and the Detroit Metropolitan Airport

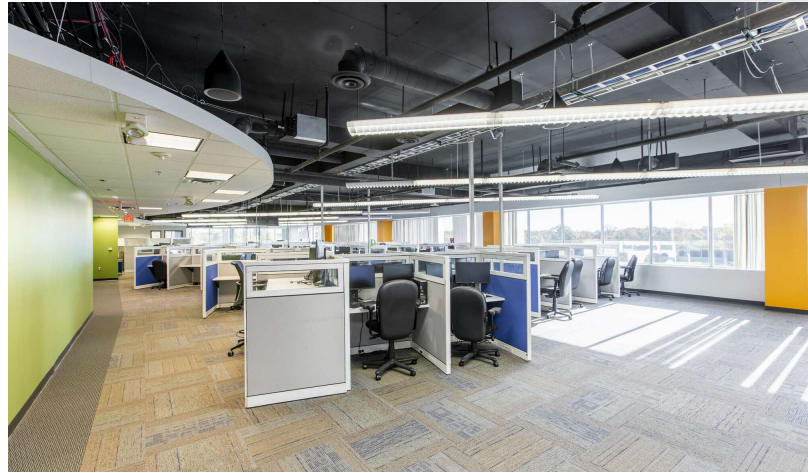
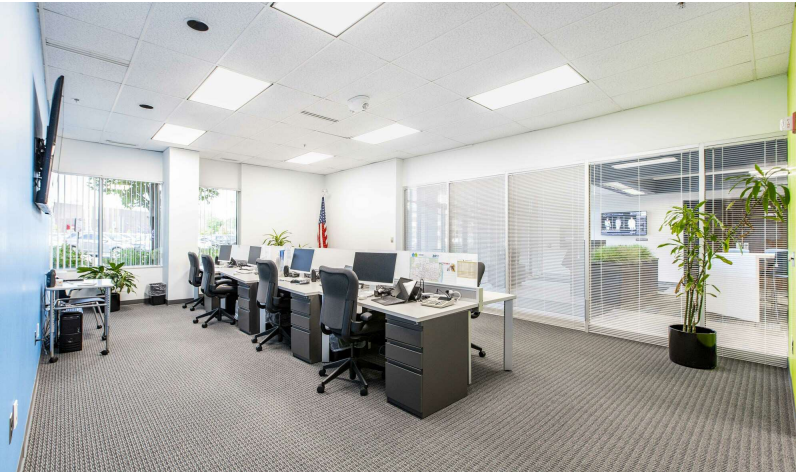
Scan Here for Floor Plans!



627 - 26,000 SF BINGHAM OFFICE CENTER



FOR LEASE



NAI Farbman
Commercial Real Estate Services, Worldwide.

www.naifarbman.com

Jeanne Gross
Senior Vice President | 248.686.5982
gross@farbman.com

NO WARRANTY, EXPRESS OR IMPLIED, IS MADE AS TO THE ACCURACY OF THE INFORMATION CONTAINED HEREIN. THIS INFORMATION IS SUBMITTED SUBJECT TO ERRORS, OMISSIONS, CHANGE OF PRICE, RENTAL OR OTHER CONDITIONS, WITHDRAWAL WITHOUT NOTICE, AND IS SUBJECT TO ANY SPECIAL LISTING CONDITIONS IMPOSED BY OUR PRINCIPALS. COOPERATING BROKERS, BUYERS, TENANTS AND OTHER PARTIES WHO RECEIVE THIS DOCUMENT SHOULD NOT RELY ON IT, BUT SHOULD USE IT AS A STARTING POINT OF ANALYSIS, AND SHOULD INDEPENDENTLY CONFIRM THE ACCURACY OF THE INFORMATION CONTAINED HEREIN THROUGH A DUE DILIGENCE REVIEW OF THE BOOKS, RECORDS, FILES AND DOCUMENTS THAT CONSTITUTE RELIABLE SOURCES OF THE INFORMATION DESCRIBED HEREIN. LOGOS ARE FOR IDENTIFICATION PURPOSES ONLY AND MAY BE TRADEMARKS OF THEIR RESPECTIVE COMPANIES. NAI Farbman, INC. CA BRE LIC. #01990696.