

**AVAILABLE
FOR LEASE**

12,000 SF
Industrial Suite

15-01 Pollitt Drive, Ste 3
Fair Lawn, NJ



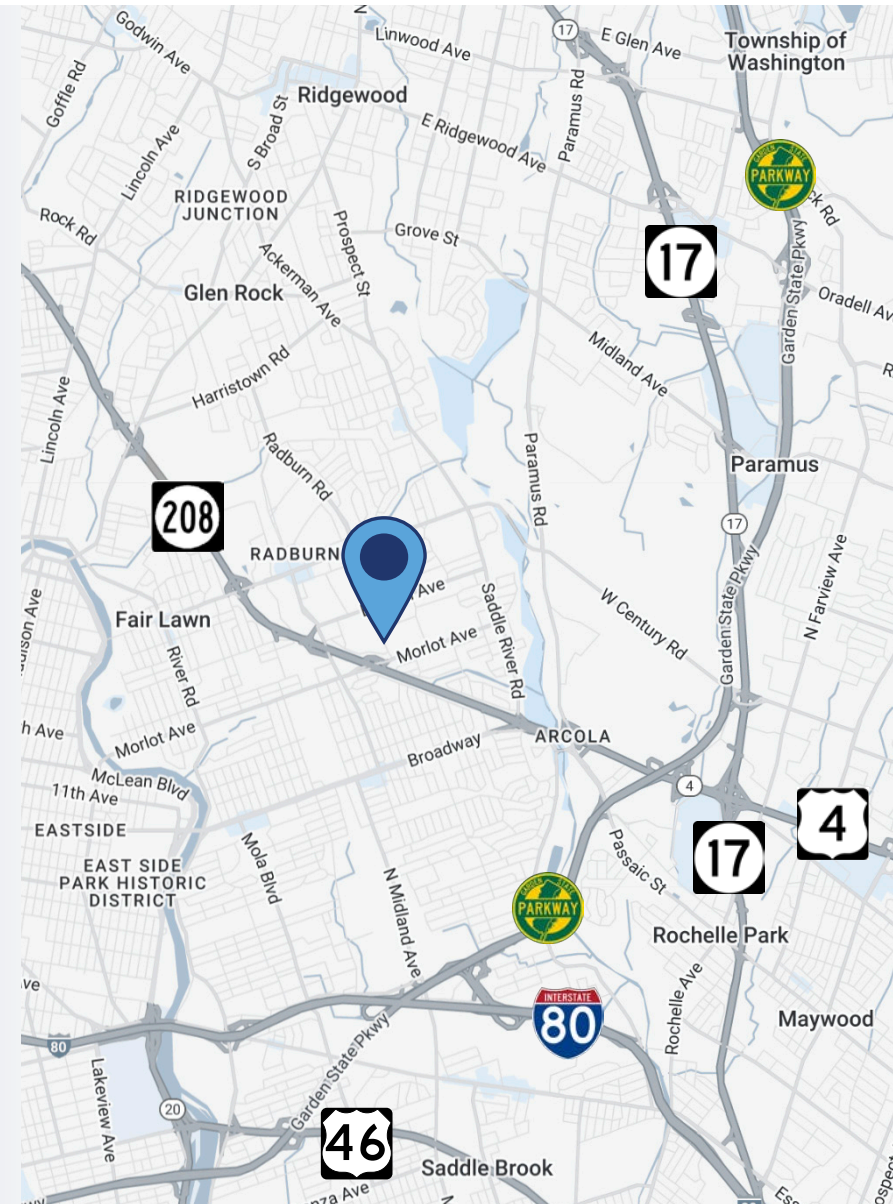
PROPERTY INFORMATION

15-01 POLLITT DRIVE Suite 3 *Fair Lawn, NJ*

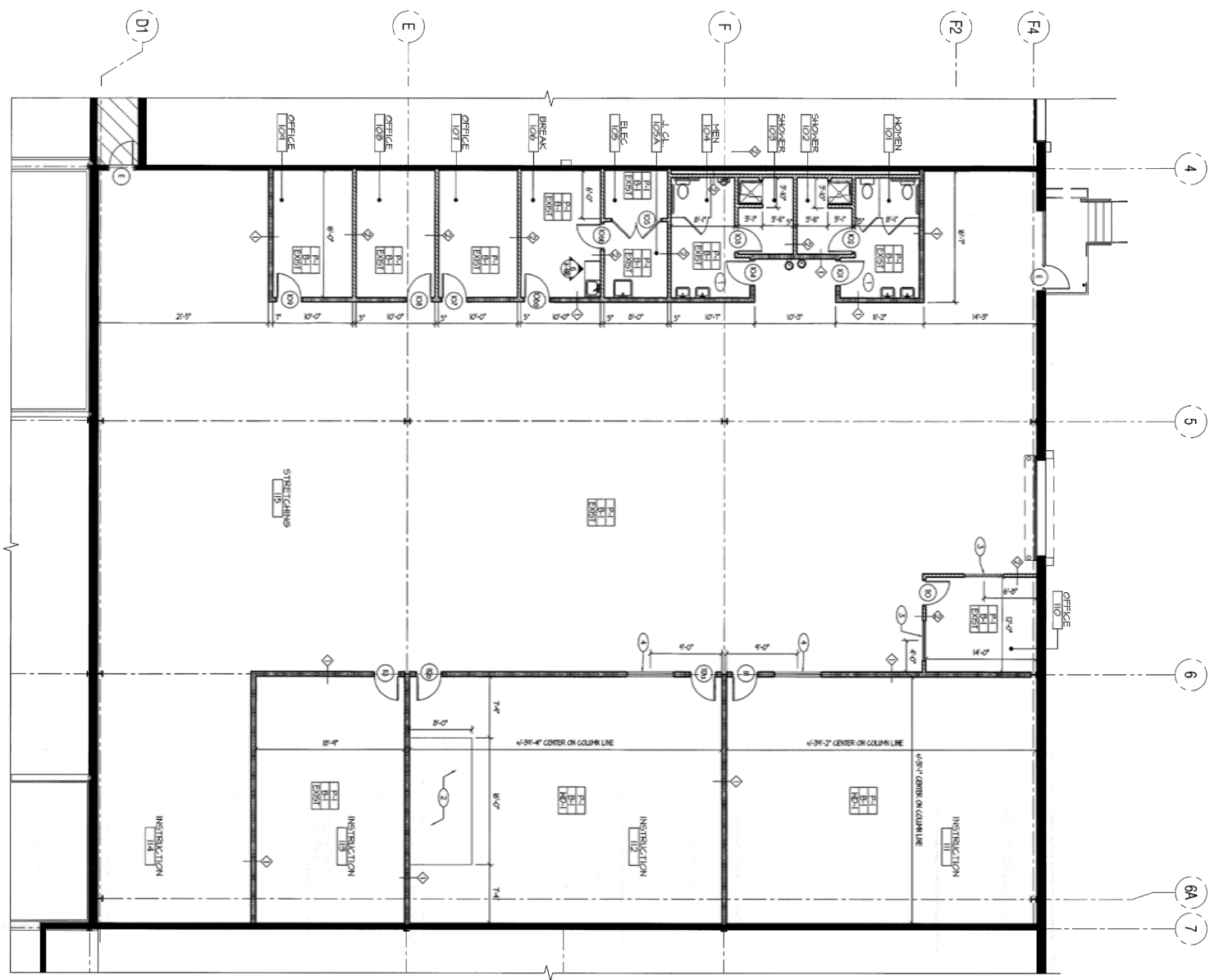
- Total Building Size: 126,000 SF
- Space Available: 12,000 SF
- Ceiling Height: 21'
- Tailgate: One (1)
- Ample Parking
- HVAC Throughout
- Wet Sprinklers
- Taxes/CAM: \$3.37 PSF
- Available Immediately

Formerly used as a gym, this space features a handicap lift at front entrance, men's & women's restrooms, HVAC units and space heaters throughout, plus a loading dock with lift gate. Very close access to Route 208 with easy connections to Route 80 and the Garden State Parkway.

INQUIRE FOR LEASE RATE



FLOOR PLAN



12,000 SF INDUSTRIAL

PROPERTY PHOTOS





👤 For more information

Darren M. Lizzack, MSRE

Principal

📞 201 906 4376

✉️ dlizzack@theclinicalgroup.com



TEAM LIZZACK-HORNING

Randy Horning, MSRE, SIOR

Principal

📞 201 739 9311

✉️ rhorning@theclinicalgroup.com

Follow us!

🌐 @TheClinicalGroup

🌐 TheClinicalGroup.com

📞 855-CLINGRP

✉️ info@TheClinicalGroup.com