



3418 DYE RD

***3418 s Dye Road
Swartz Creek, MI 48507***

This piece of industrial zoned vacant land includes two parcels located in the City of Swartz Creek adjacent to General Motors. It offers over 3.5 acres and already has a curb cut and has access to city municipal services.

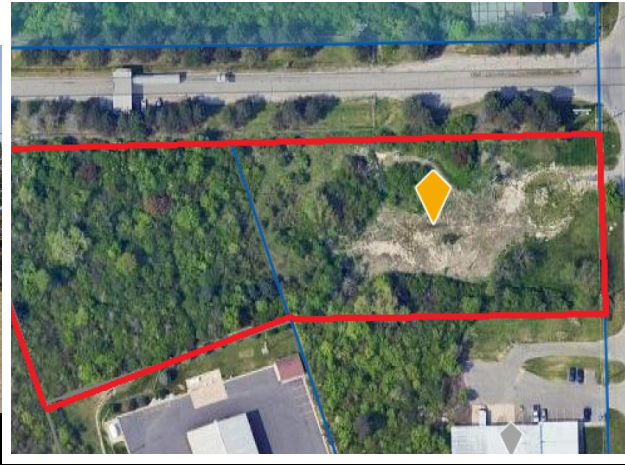


SALE

Call for Price

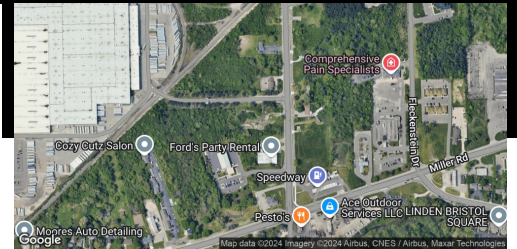
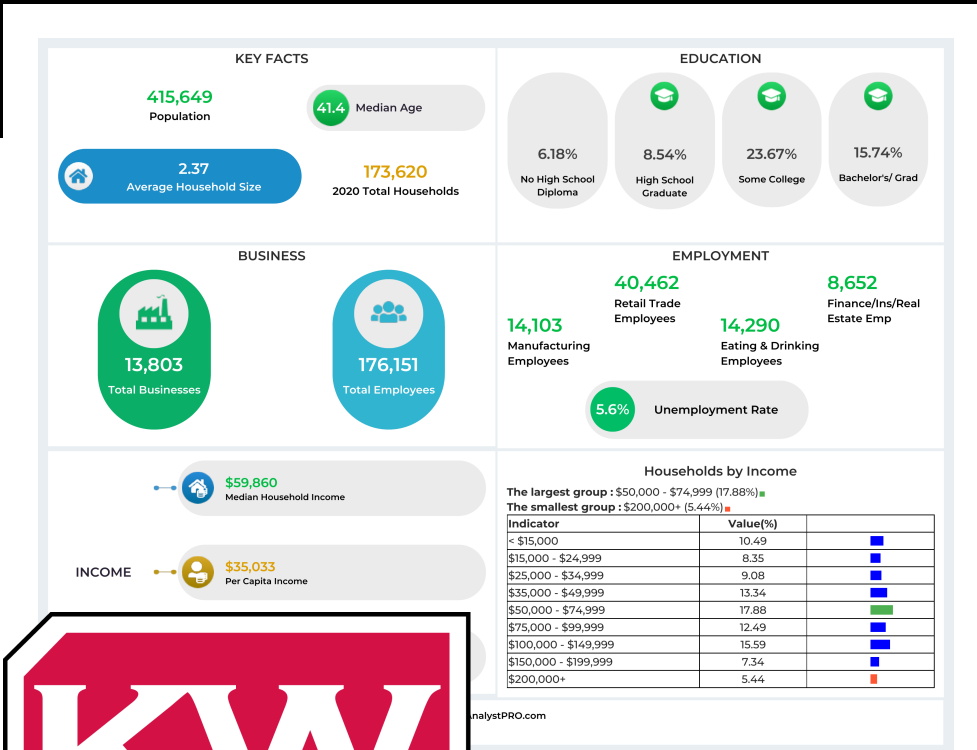
Land Size: 3.52 Acres

Contact:
313.312.5764
TREVOR BROOKS
License: 6501374378
t.brooks@kwcommercial.com



Property Available

313.312.5764



This information has been obtained from sources believed reliable. We have not verified it and make no guarantee, warranty or representation about it. Any projections, opinions, assumptions or estimates used are for example only and do not represent the current or future performance of the property. You and your advisors should conduct a careful, independent investigation of the property to determine to your satisfaction the suitability of the property for your needs. Photos herein are the property of their respective owners and use of these images without the express written consent of the owner is prohibited.