

9 CUTTS ROAD KITTERY, ME

FOR SALE



HIGH VISIBILITY MANUFACTURING

PROPERTY SPECIFICATIONS

BUILDING SIZE:	113,353 SF	PARKING:	78 SPACES (EXPANDABLE)
LOT SIZE:	27 ACRES	POWER:	2000 AMPS, 480 Volts, 3 Phase
ZONED:	MU	HEAT:	PROPANE
YEAR BUILT:	1967	UTILITIES:	TOWN WATER + SEWER
CONSTRUCTION:	METAL, STEEL FRAME	HIGHLIGHTS <ul style="list-style-type: none">• Expansion potential adjacent to Kittery Outlets• Easy access to Interstate (I-95)• 10 minutes north of Portsmouth, NH• Both I-95 and Rt. 1 frontage	
CEILING HEIGHT:	11'-14'		
LOADING:	8 LOADING DOCKS 1 DRIVE-IN		
ROOF:	RUBBER MEMBRANE		

R.W. HOLMES
COMMERCIAL REAL ESTATE

JOHN EYSENBACH
JOHNE@RWHOLMES.COM
(508) 651-9017

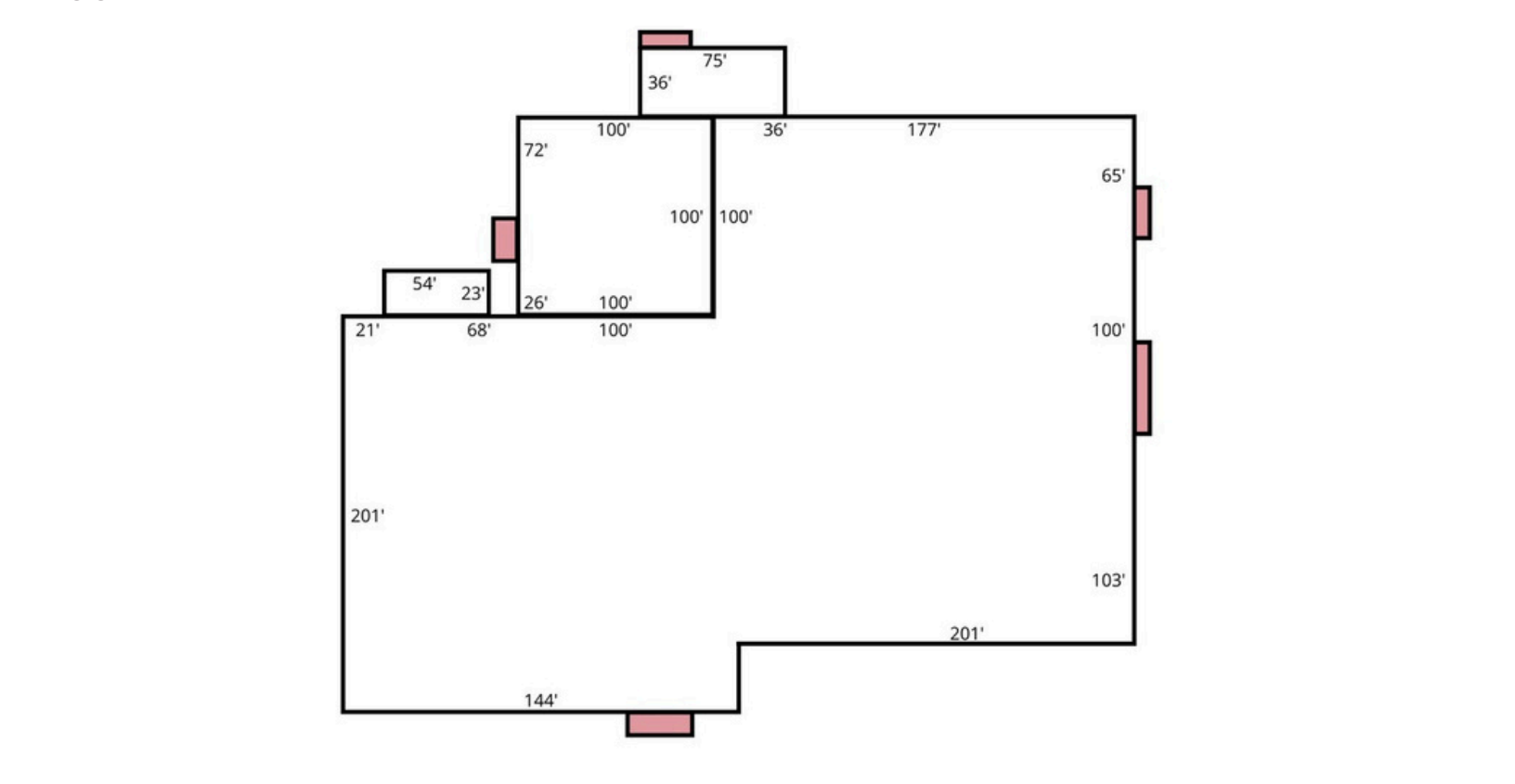
FOR MORE INFORMATION CONTACT:

I-BEAM REAL ESTATE
DAVID GILKIE, CCIM, SIOR
DGILKIE@I-BEAMRE.COM
(781) 771-2906

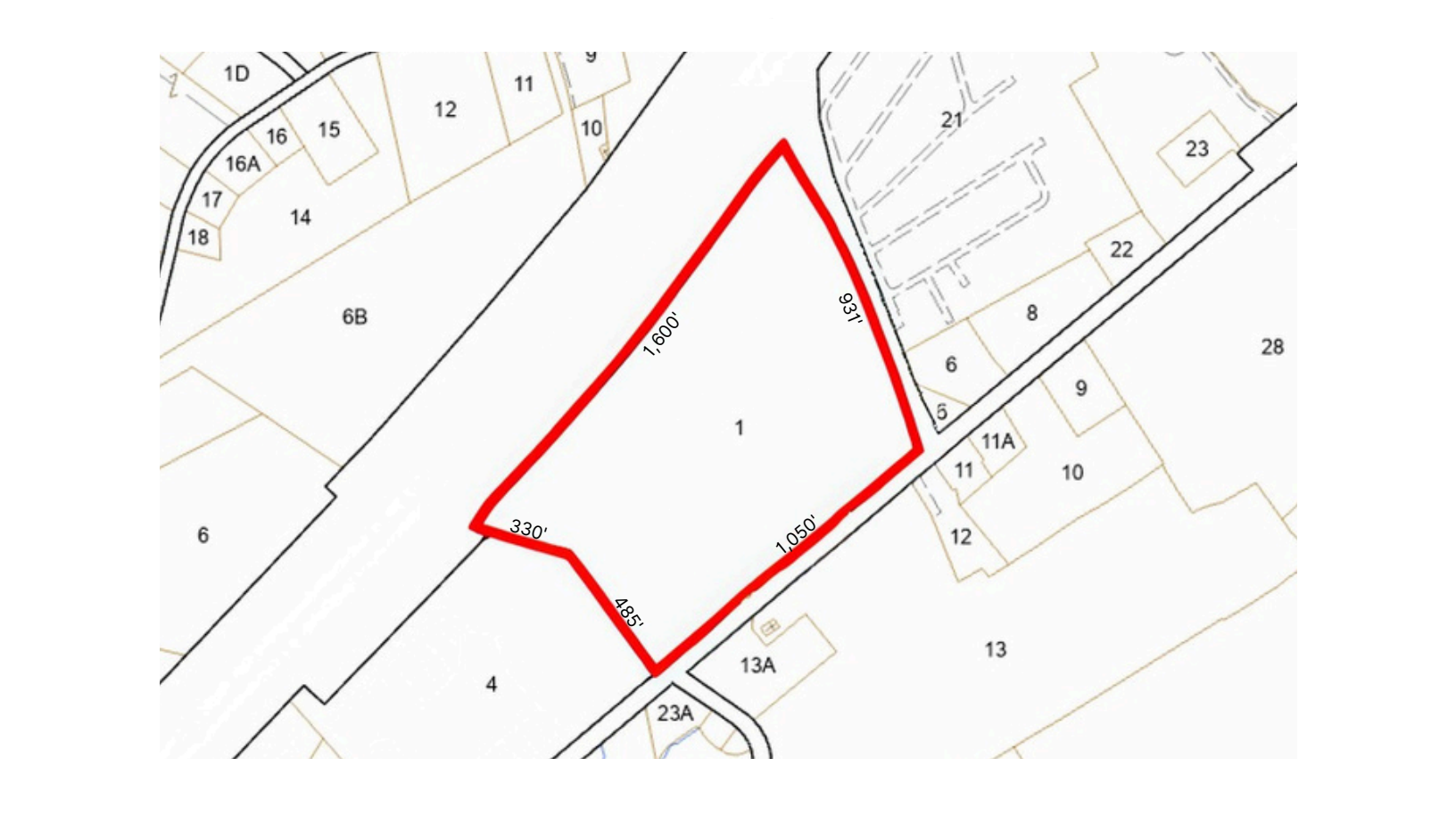
WWW.RWHOLMES.COM



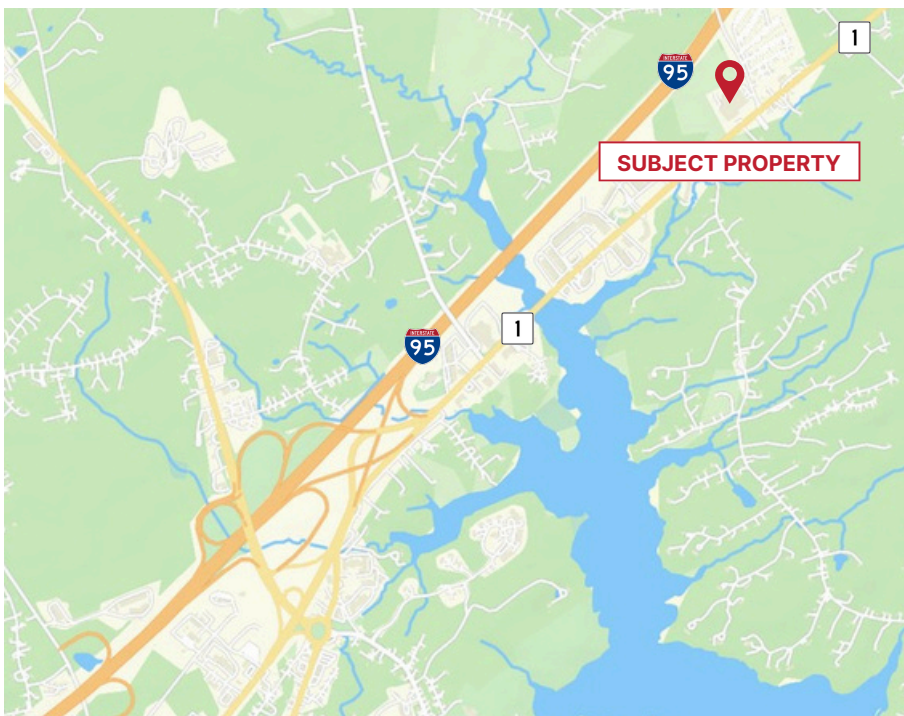
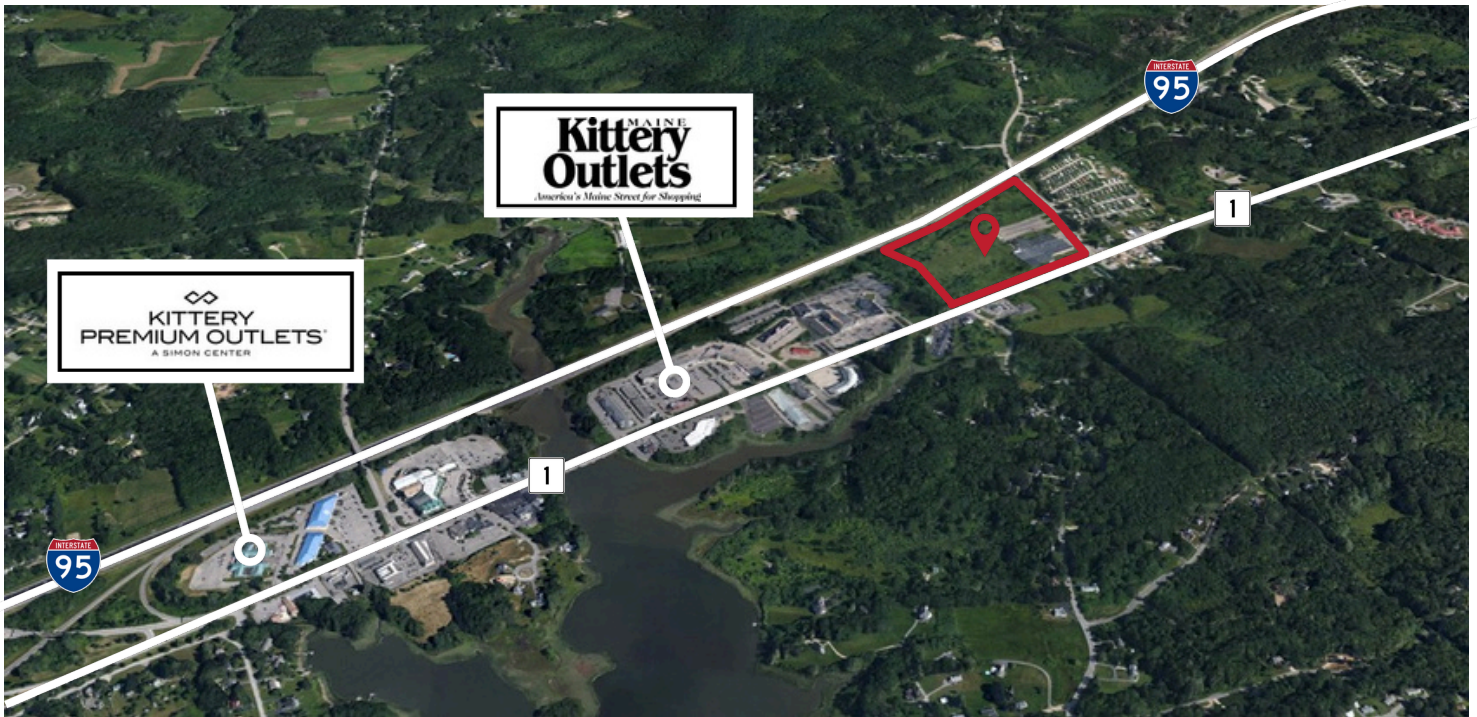
FLOOR PLAN



SITE PLAN



LOCATION & ACCESS



1,600'± FRONTAGE



1,050'± FRONTAGE



931'± FRONTAGE CUTTS RD.

CONVENIENT ACCESS

PORTSMOUTH, NH

3.9 MILES

BOSTON, MA

61 MILES