



RETAIL SPACE AND ATM PAD AVAILABLE

Palms Plaza
1155 S. Dale Mabry Hwy.
Tampa, FL 33609

Welcome to Palms Plaza

Clover Investment Properties is pleased to announce a prime retail opportunity at Palms Plaza, a 32,512 SF boutique shopping center in the heart of South Tampa. This suite is an end- cap with direct Dale Mabry frontage.

Availabilities		
Suite	Size	Use
Suite 11	912	Retail/Medical
ATM pad	N/A	Drive-up ATM

Prime Location: Considered the nexus of South Tampa, Palms Plaza is located in one of the highest income zip codes in the Tampa Bay region.

High Traffic: Frontage on S. Dale Mabry Hwy., Henderson Blvd., and Watrous Ave., with a combined traffic count of over 59,000 cars per day.

Long-Term & Prestigious Tenants: Join a stable roster of tenants, including Baycare Urgent Care, GoodVets, Little Greek, Nothing Bundt Cakes, Heavenly Nails, H&R Block, Ruppel Dentistry, Grain & Berry, and more.

Proximity to Major Retailers: Adjacent to one of the highest-grossing Publix stores in its system.

Prominent Signage: Ensuring maximum visibility for businesses, signage includes two pylon signs, fronting S. Dale Mabry Hwy. & Henderson Blvd., and fascia signage.

Contacts

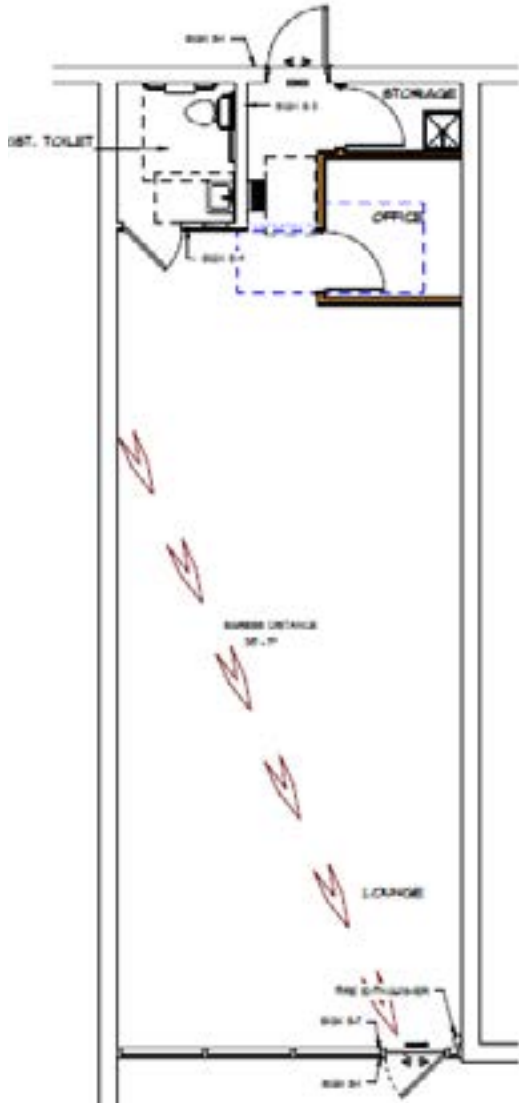
Clover Investment Properties
813-641-4261
clover-properties.com

Chad Keller
ckeller@clover-properties.com

Lyle Fogarty
lfogarty@clover-properties.com

SOUTH TAMPA BOUTIQUE SHOPPING CENTER

Palms Plaza | 1155 S. Dale Mabry Hwy., Tampa, FL 33609



Suite 11
912 SF
\$46.00/SF NNN
Available Immediately



[Click here for a full virtual tour](#)

ATM pad
Drive-up ATM
Negotiable rate



SOUTH TAMPA BOUTIQUE SHOPPING CENTER

Palms Plaza | 1155 S. Dale Mabry Hwy., Tampa, FL 33609



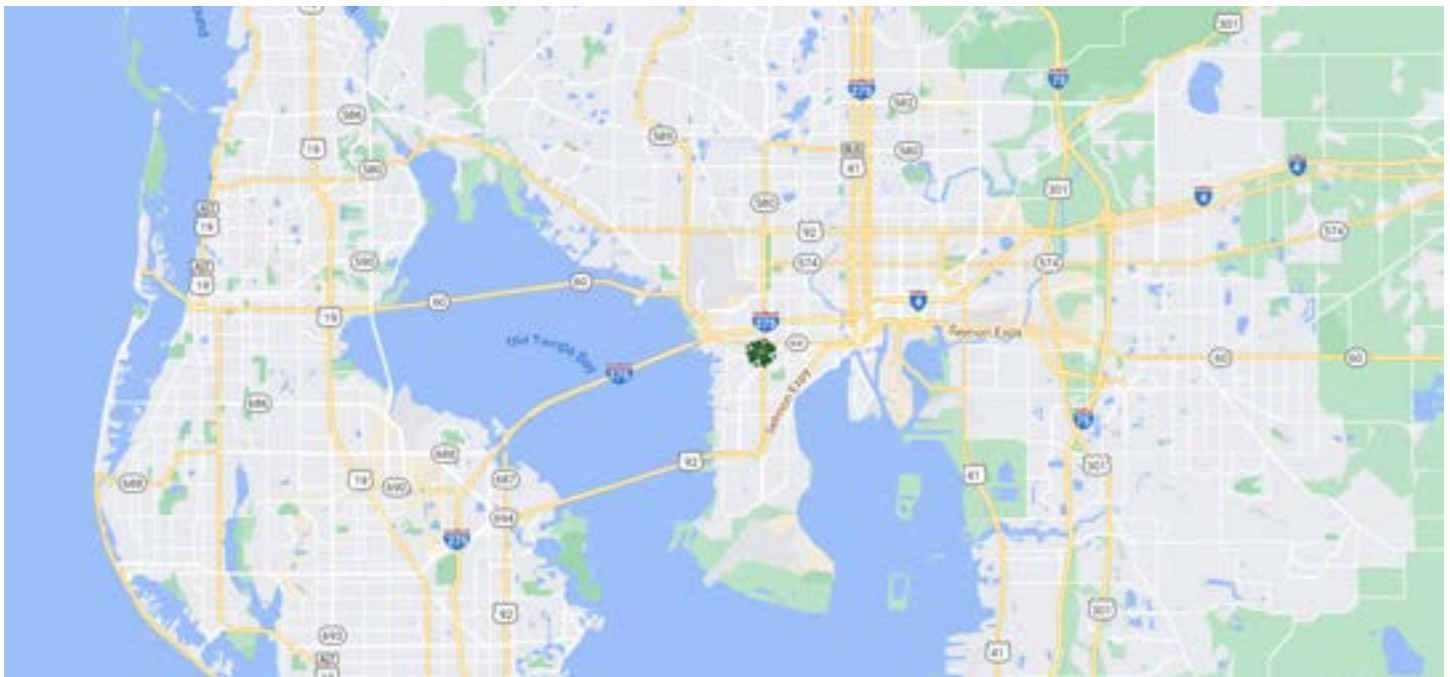
Demographics

Distance:	1 mile	3 miles	5 miles
Population:	14,140	107,090	224,165
Households:	6,064	47,150	98,262
Avg. HH Income:	\$147,781	\$113,090	\$98,171
Median Age:	42	40	39



SOUTH TAMPA BOUTIQUE SHOPPING CENTER

Palms Plaza | 1155 S. Dale Mabry Hwy., Tampa, FL 33609



Contacts

Clover Investment Properties

813-641-4261

clover-properties.com

Chad Keller

ckeller@clover-properties.com

Lyle Fogarty

lfogarty@clover-properties.com

Clover Investment Properties, LLC, a licensed real estate broker. License # CQ1067278

The material is based on information obtained by Clover Investment Properties from sources deemed reliable. Clover Investment Properties and the owner do not make any guarantees, warranties or representations, express or implied, as to the completeness or accuracy as to the information contained herein. Any projections, opinions, assumptions or estimates used are for example only. ©2024