

OWNED BY:

 Birtcher  
Anderson & Davis

# FOR LEASE

## 2425 McIver Lane

SUITE 110, CARROLLTON, TX 75006

- 5,596 SF Total
- 1,586 SF of Office
- 1 Dock High Door
- 16' Clear Height
- Front Load Building
- Immediate Access to President George Bush Turnpike, I-635 & I-35



**MAC HALL**

214.560.2371

mac.hall@streamrealty.com

**LUKE LOCHAUSEN**

214.560.5129

luke.lochausen@streamrealty.com



OWNED BY:

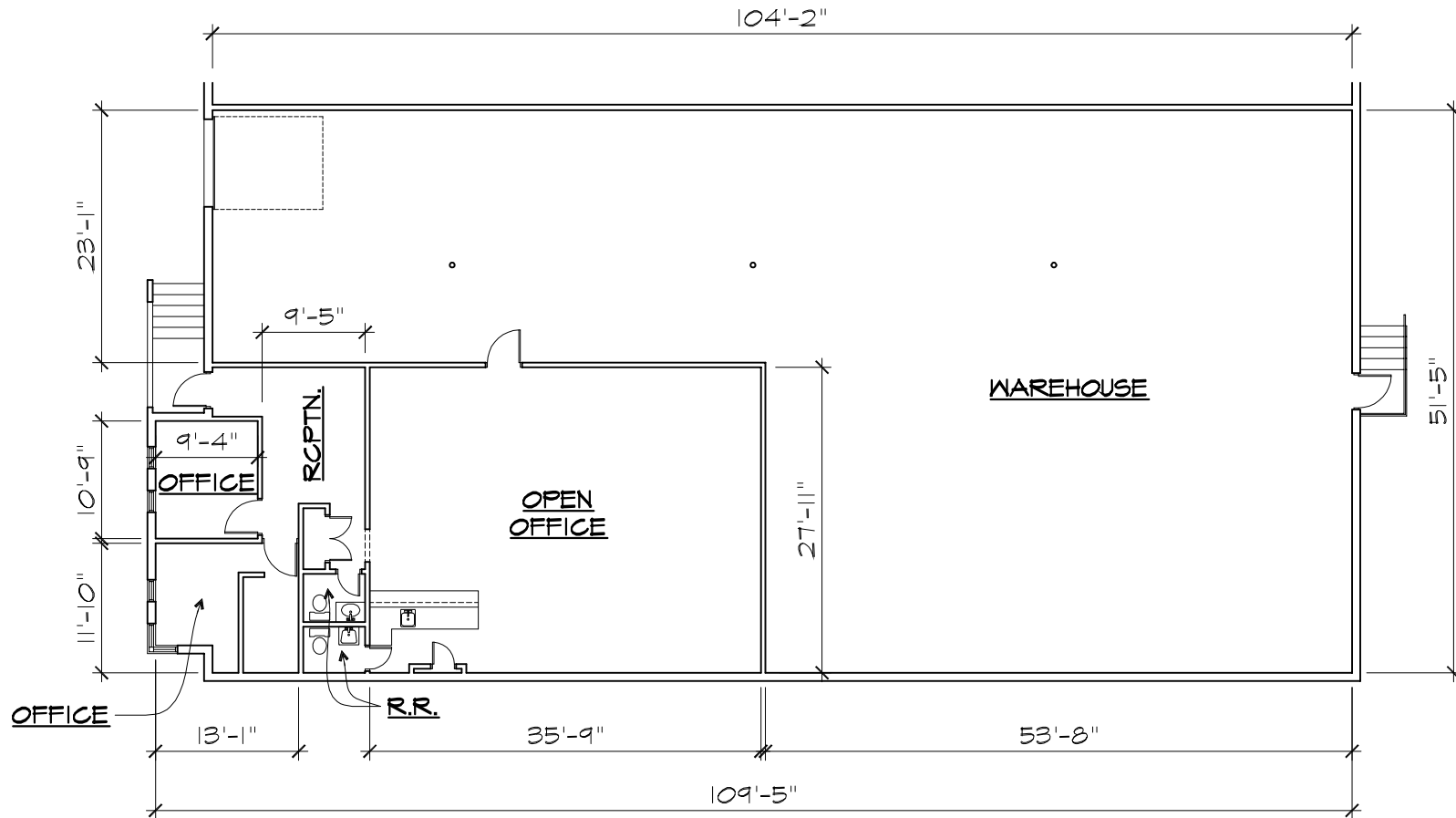
 Birtcher  
Anderson & Davis

# FOR LEASE

## 2425 McIver Lane Suite 110

CARROLLTON, TX 75006

### 5,596 SF AVAILABLE



**MAC HALL**  
214.560.2371  
mac.hall@streamrealty.com

**LUKE LOCHAUSEN**  
214.560.5129  
luke.lochausen@streamrealty.com

**STREAM**