

FOR LEASE

900 AVILA ST, LOS ANGELES, CA 90012

A rare opportunity to establish your presence in a high-visibility location with unbeatable access to Downtown LA and major transit hubs







Explore this distinctive property situated in the heart of Chinatown/ Central City East

Prime location with high visibility near Cesar Chavez Avenue

Walking distance to Chinatown, Olvera Street, Union Station, and minutes from Downtown LA

Close access to the Metro A Line (Chinatown Station) and major freeways

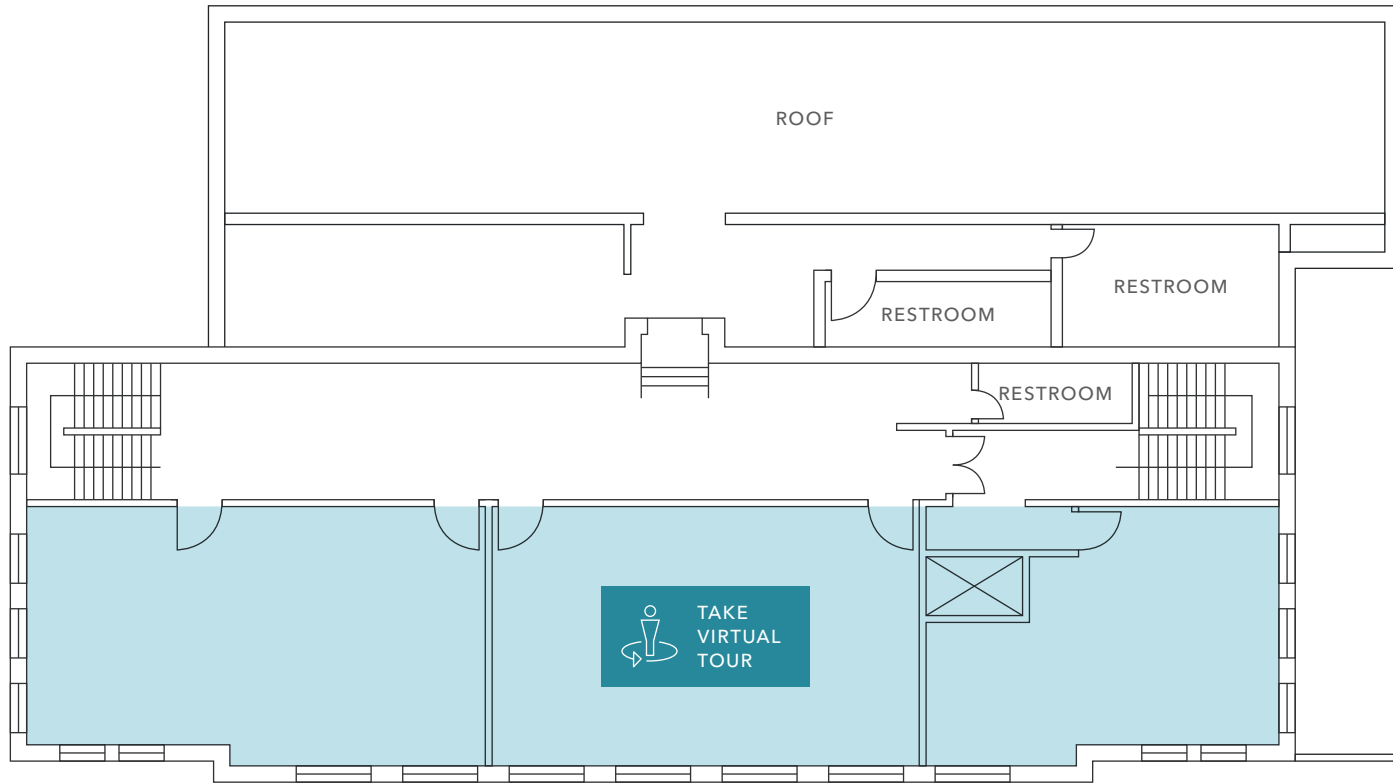
Surrounded by restaurants, local markets, and cultural landmarks

Excellent vehicular access, loading areas, and signage opportunities with 24-hour access

3,000
AVAILABLE SF

\$6,500 MG
LEASE RATE (PER MONTH)

3RD FLOOR PLAN



3,000 SF

AVAILABLE

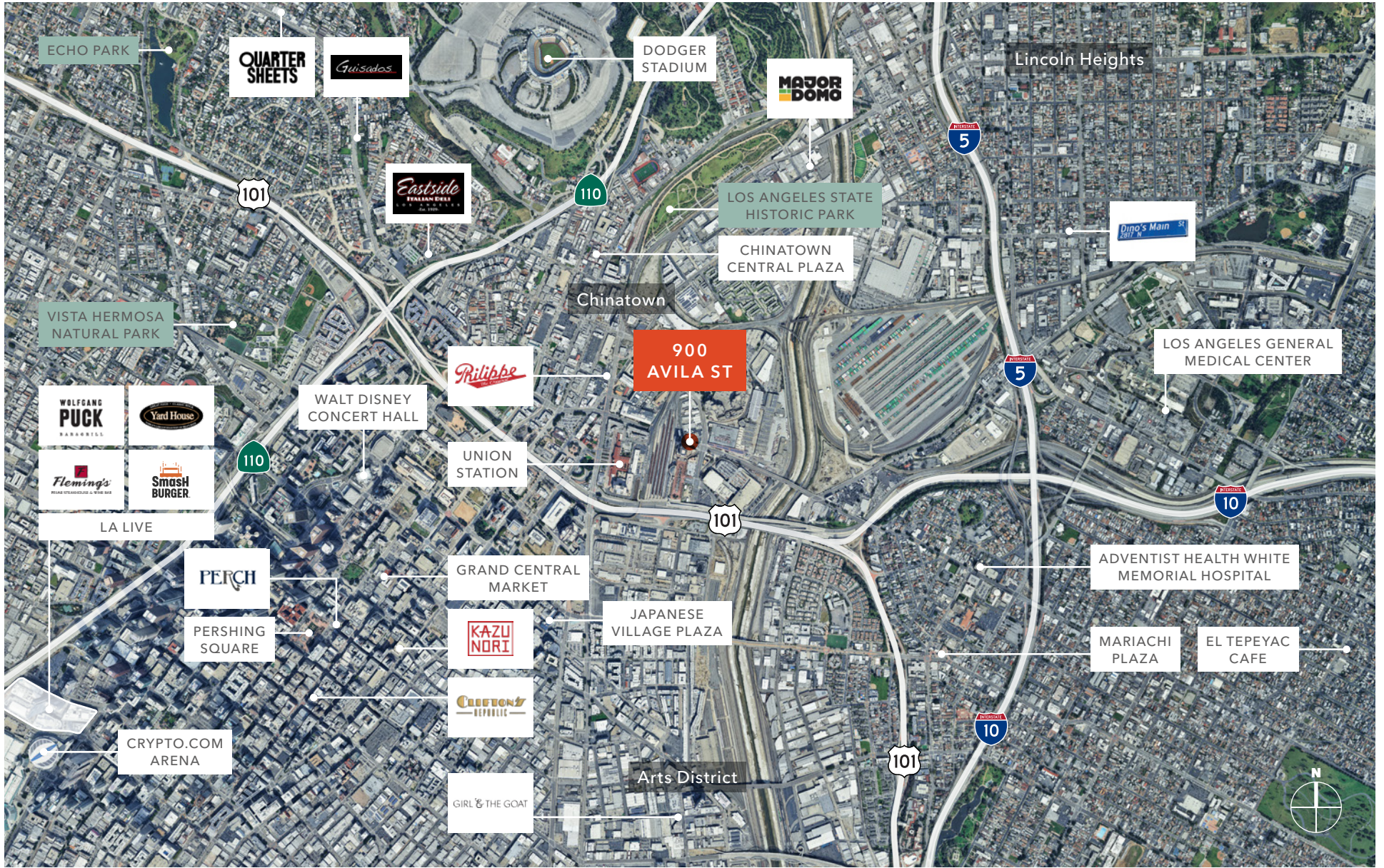
\$6,500 MG

LEASE RATE (PER MONTH)

NOW

AVAILABLE





900
AVILA ST

Exclusively leased by

CHRISTOPHER STECK, CCIM
213.225.7231
christopher.steck@kidder.com
LIC N° 01841338

HEATHER ISENBERG
213.225.7224
heather.isenberg@kidder.com
LIC N° 02092099

JOHN ANTHONY, SIOR
213.225.7218
john.anthony@kidder.com
LIC N° 01226464

KIDDER.COM

This information supplied herein is from sources we deem reliable. It is provided without any representation, warranty, or guarantee, expressed or implied as to its accuracy. Prospective Buyer or Tenant should conduct an independent investigation and verification of all matters deemed to be material, including, but not limited to, statements of income and expenses. Consult your attorney, accountant, or other professional advisor. All Kidder Mathews designs are the sole property of Kidder Mathews. Branded materials and layouts are not authorized for use by any other firm or person.

 **Kidder
Mathews**