

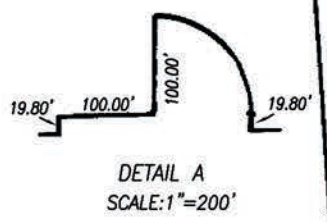
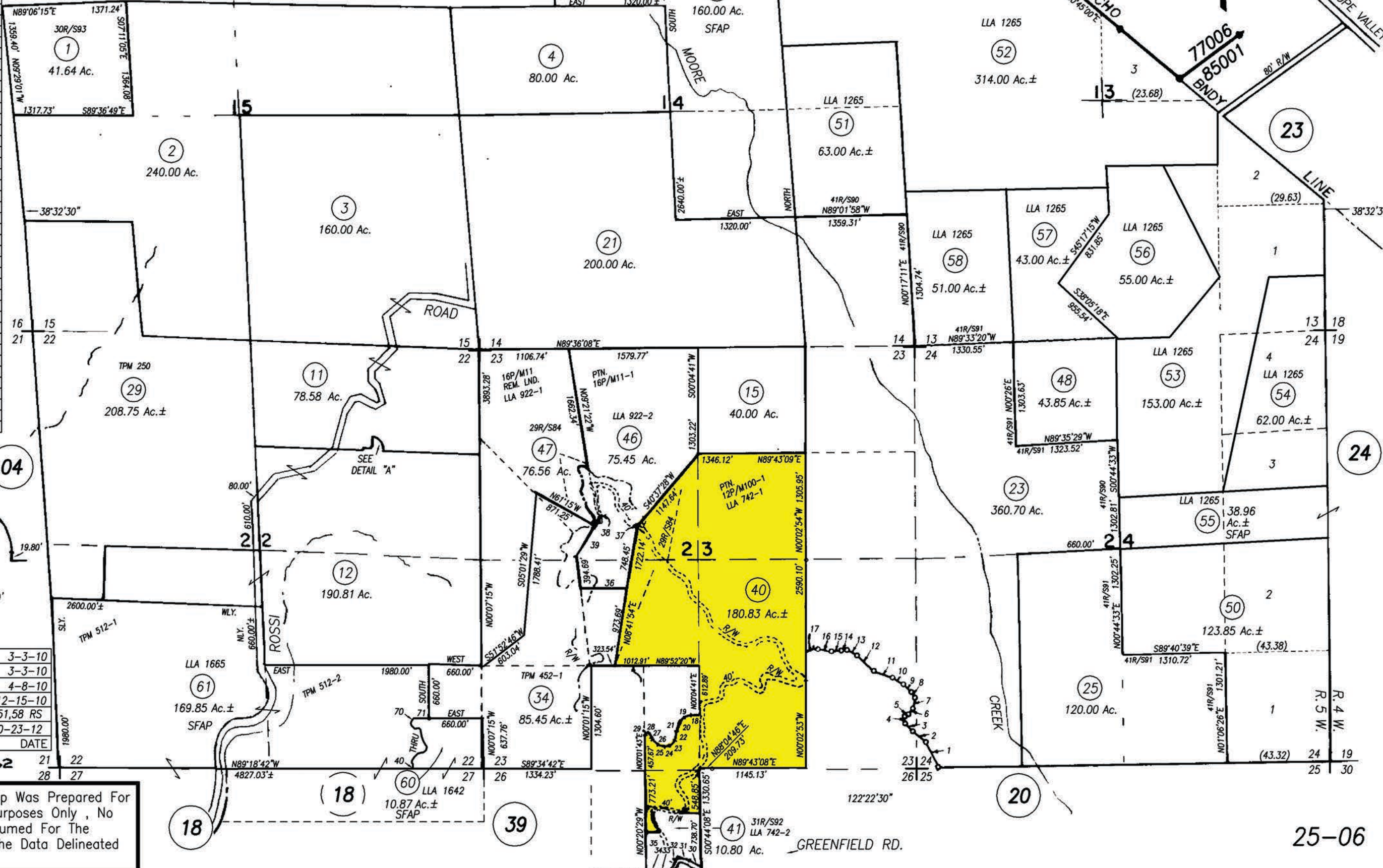
# COUNTY ASSESSOR'S PARCEL MAP

T.8N., R.5W., M.D.B.&M.

Tax Area Code  
85001

25-06

1.	N26°30'W	355.50'	53.	N83°05'01"E	16.32'
2.	N51°45'W	206.76'	54.	R=30'	L=6.96'
3.	N44°45'W	143.41'	55.	R=65'	L=81.88'
4.	N03°30'E	86.33'	56.	R=40'	L=21.74'
5.	N55°30'E	45.43'	57.	R=25'	L=10.84'
6.	N37°30'E	85.99'	58.	N58°22'12"W	5.24'
7.	N10°30'E	129.20'	59.	R=5'	L=3.81'
8.	N32°00'W	93.24'	60.	R=150'	L=57.36'
9.	N45°00'W	134.60'	61.	R=90'	L=50.22'
10.	N60°50'W	143.75'	62.	R=360'	L=62.99'
11.	N79°25'W	259.45'	63.	N14°39'44"W	23.81'
12.	N46°30'W	271.42'	64.	R=27'	L=41.00'
13.	N63°30'W	155.89'	65.	S78°20'23"W	36.30'
14.	S79°30'W	68.38'	66.	N67°56'47"W	4.49'
15.	S84°30'W	116.07'	67.	R=65'	L=37.82'
16.	N82°30'W	162.47'	68.	N34°36'26"W	21.56'
17.	S76°30'W	80.77'	69.	R=40'	L=49.50'
18.	N86°18'15"W	117.04'	70.	N36°17'39"E	50.00'±
19.	R=119'	L=99.22'	71.	ELY	200.00'±
20.	R=244'	L=70.20'			
21.	R=344'	L=99.02'			
22.	S12°56'50"W	123.80'			
23.	R=71'	L=82.44'			
24.	S79°28'25"W	68.27'			
25.	R=86'	L=83.76'			
26.	N44°43'20"W	91.72'			
27.	R=86'	L=41.36'			
28.	R=32'	L=47.44'			
29.	R=49'	L=39.38'			
30.	N60°45'W	169.61'			
31.	N76°58'38"W	142.90'			
32.	S22°57'41"W	100.75'			
33.	S50°30'30"W	94.93'			
34.	N89°16'52"W	263.55'			
35.	N00°20'29"W	553.78'			
36.	N89°42'04"W	581.51'			
37.	N12°42'15"E	40.00'			
38.	N24°48'45"E	40.00'			
39.	N29°48'31"E	437.02'			
40.	R=40'	L=19.77'			
41.	R=42'	L=17.48'			
42.	R=25'	L=22.36'			
43.	N39°42'28"W	9.11'			
44.	N01°39'22"W	29.05'			
45.	R=10'	L=8.26'			
46.	R=100'	L=41.71'			
47.	R=50'	L=22.62'			
48.	N47°43'06"E	16.10'			
49.	N38°10'49"E	13.48'			
50.	R=20'	L=12.39'			
51.	N73°40'42"E	44.31'			
52.	R=40'	L=6.57'			



060-59 & 60 LLA	3-3-10
060-32 LLA	3-3-10
060-48 & 50 COC	4-8-10
060-61 LLA	12-15-10
PTN 060-23,25,48,51,58 RS	
REVISION	DATE
1955-62	21 22
	28 27

NOTE: This Map Was Prepared For Assessment Purposes Only, No Liability Is Assumed For The Accuracy Of The Data Delineated Hereon.

25-06