



CONCORD, NC

WEDDINGTON RD & GEORGE W LILES PKWY

1.28 ACRES AVAILABLE FOR LEASE



PROJECT DETAILS

WEDDINGTON RD & GEORGE W LILES PKWY • 1.28 ACRES AVAILABLE FOR LEASE • LAND

AVAILABLE SPACE

1.28 Acres

TRAFFIC COUNTS

23,500 ADT on George W Liles Pkwy
16,000 ADT on Weddington Rd

PROPERTY HIGHLIGHTS

- Across from new Willow Oaks Crossing - Publix anchored shopping center
- Excellent corner lot on high trafficked George wW Liles Pkwy
- Zoned: C-1-CI
- Less than a mile from a new high school - West Cabarrus High School will be the largest HS in the county school system

LEASE RATE

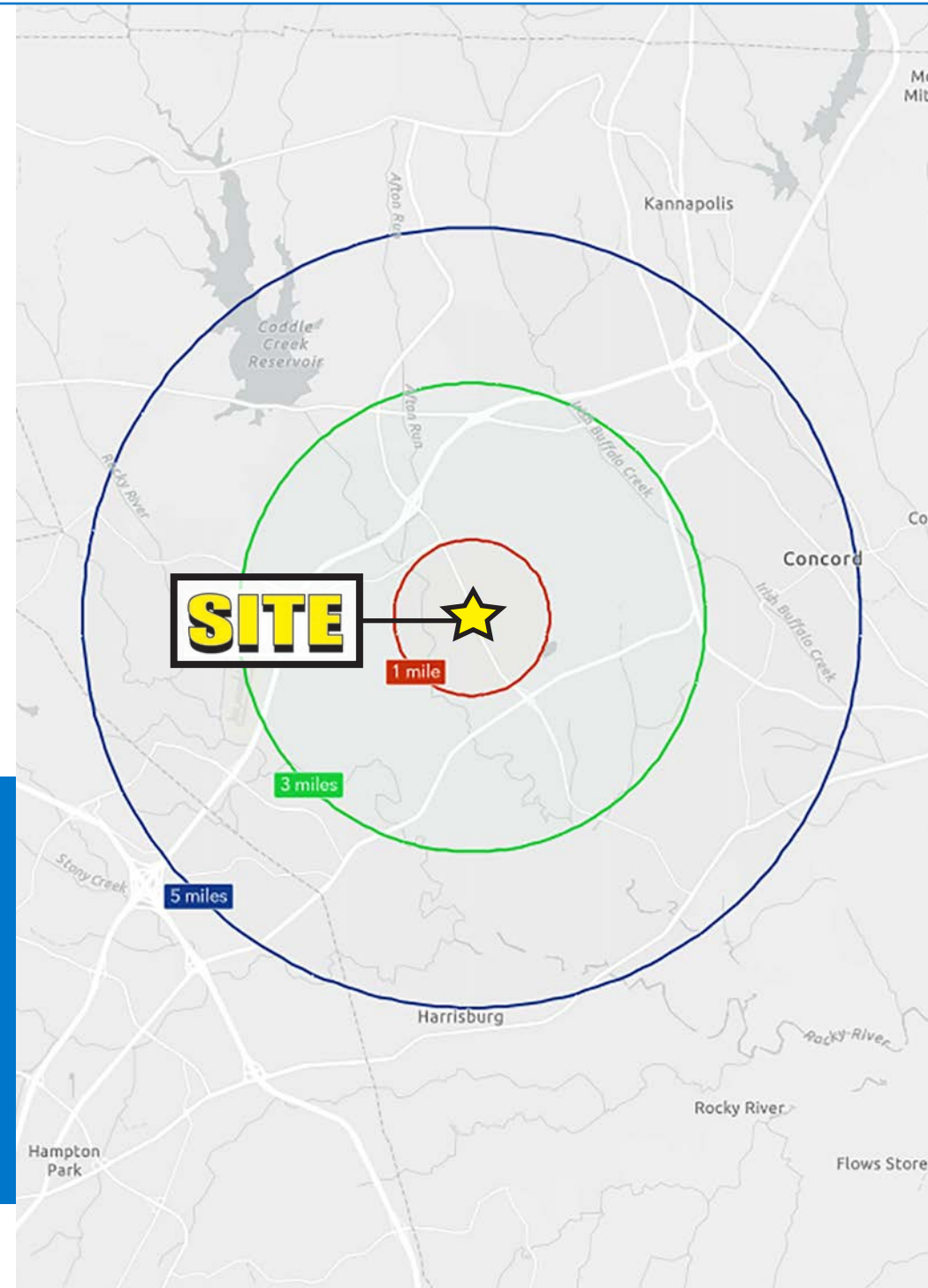
Call to discuss

COUNTY

Cabarrus

MSA

Charlotte-Concord-Gastonia



DEMOGRAPHICS

TOTAL HOUSEHOLDS

1 MILE

1,865

3 MILES

14,584

5 MILES

43,974



TOTAL POPULATION

4,938

36,939

114,844



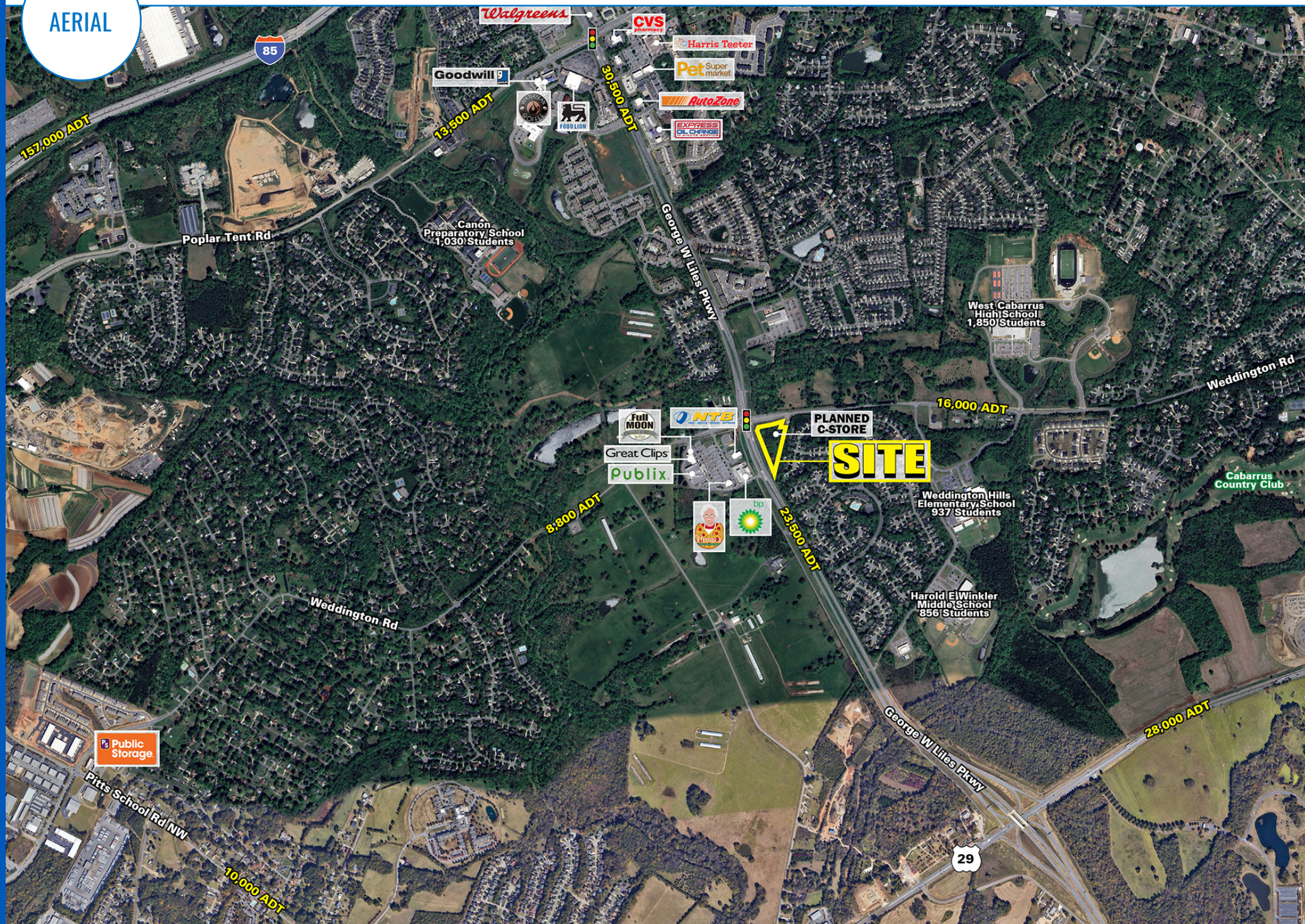
MEDIAN HH INCOME

\$111,795

\$86,050

\$79,666

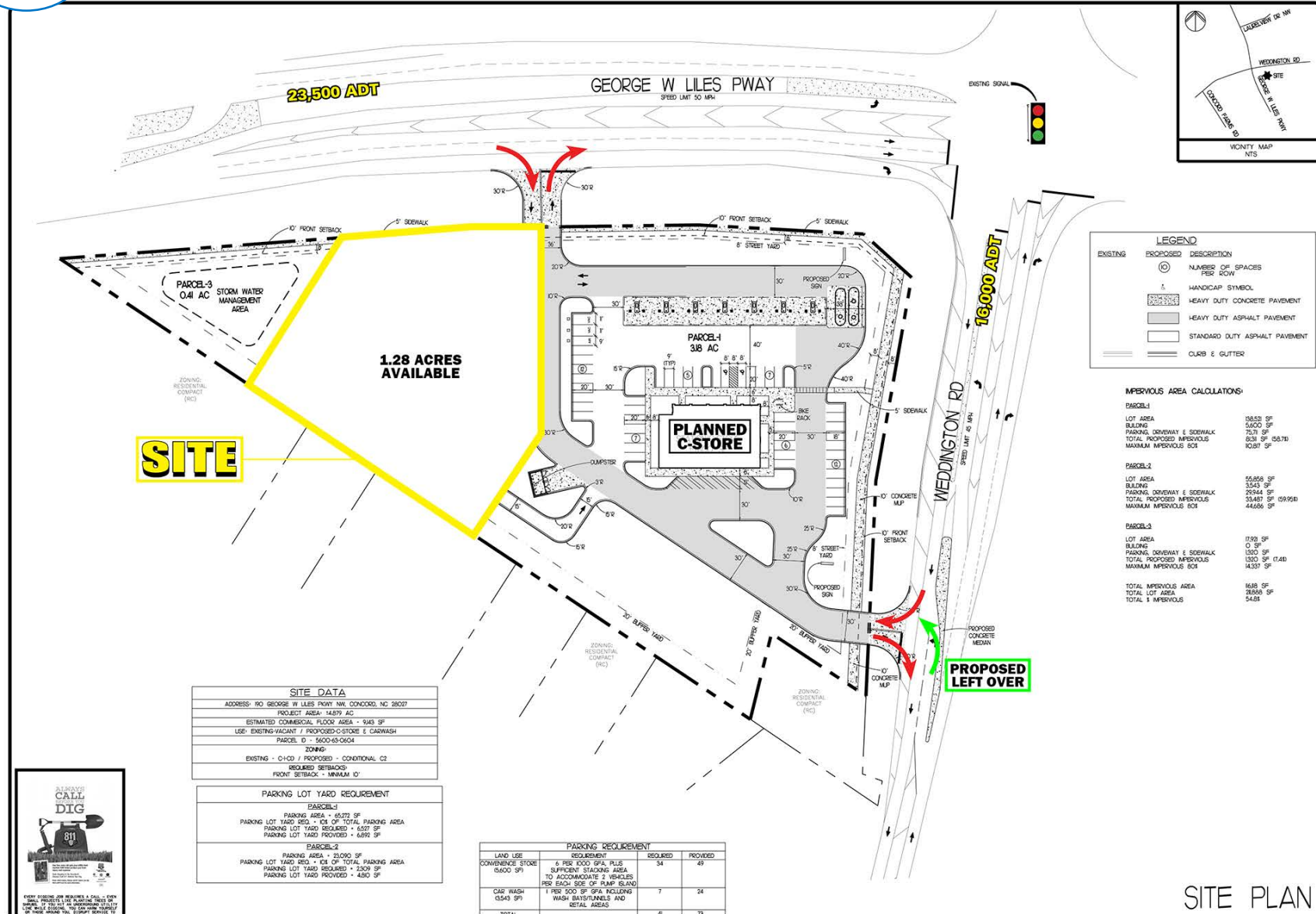
AERIAL



AERIAL



SITE PLAN



SITE PLAN

REVISIONS	BY

209 West Stone Avenue
Greenville, SC 29609
Phone 864.233.5497
Firm Number C-5106



PRELIMINARY
NOT FOR
CONSTRUCTION

TWP CONCORD RETAIL
100 GEORGE W LILES PKWY
CONCORD, NC 28027

TWP ACQUISITIONS, LLC
1665 HOWELL MILL ROAD, SUITE 20
ATLANTA, GA 30328
770.599.9400

DRAWN BY
CHECKED BY
DATE
10/20/2025
SCALE
AS SHOWN
DRAWING



CONCORD

NORTH CAROLINA

Concord, North Carolina, is a vibrant city that blends history, culture, and modern amenities. Located just northeast of Charlotte, Concord has grown into a bustling suburb known for its rich heritage and Southern charm. Historic downtown Concord is a highlight, with beautifully preserved 19th-century architecture, unique boutiques, and a variety of dining options. The Cabarrus County Courthouse and the Old Courthouse Theatre add to the town's historical ambiance, while galleries and art installations showcase local creativity. Concord's roots are also tied to textiles, and the city has maintained its industrial legacy through adaptive reuse projects that honor this history.

Beyond its historical appeal, Concord is perhaps best known for its role in the world of motorsports. The city is home to Charlotte Motor Speedway, a major venue for NASCAR races and events that draw fans from across the country. Concord Mills, one of North Carolina's largest shopping malls, offers a wide range of retail options, from outlet stores to high-end brands, along with entertainment venues like SEA LIFE Aquarium. Outdoor enthusiasts can explore local parks and trails, while families often visit attractions like Great Wolf Lodge. With its combination of heritage, modern attractions, and easy access to Charlotte, Concord has grown into a dynamic community that offers something for everyone.



CONCORD, NC

WEDDINGTON RD & GEORGE W LILES PKWY

1.28 ACRES AVAILABLE FOR LEASE

ROBEY SPRATT

704.697.1901
RSPRATT@ATLANTICRETAIL.COM

MICAH GROEBER

704.697.1902
MGROEBER@ATLANTICRETAIL.COM



WWW.ATLANTICRETAIL.COM

 [LINKEDIN.COM/COMPANY/ATLANTIC-RETAIL-PROPERTIES](https://www.linkedin.com/company/atlantic-retail-properties)
 [INSTAGRAM.COM/ATLANTIC_RETAIL/](https://www.instagram.com/atlantic_retail/)

 **CHAINLINKS**
RETAIL ADVISORS

ALBANY
ATLANTA
CHARLESTON
BOSTON
WEST PALM BEACH
LOS ANGELES
NEW YORK CITY
ORLANDO
PITTSBURGH

CHARLOTTE
CAPITOL TOWERS
4350 CONGRESS ST, SUITE 575
CHARLOTTE, NC 28211
704.697.1900