

FOR LEASE

OFFICE BUILDING



# BRICK KILN PLACE

31 SCHOOSSETT ST, PEMBROKE, MA 02359-1877

*For More Information*

**DAVE ELLIS, SIOR**

781.919.0800 X701

dave@ellisrealtyadvisors.com

**KERRICK PIERCE**

781.919.0800 X710

kpierce@ellisrealtyadvisors.com



# BRICK KILN PLACE



## OFFERING SUMMARY

Lease Rate:	\$18.00 - 20.00 SF/yr (MG; Full Service)
Building Size:	27,265 SF
Available SF:	360 - 1,938 SF
Lot Size:	2.72 Acres
Year Built:	1989
Zoning:	Commercial
Market:	Boston
Submarket:	Route 3 South

## PROPERTY OVERVIEW

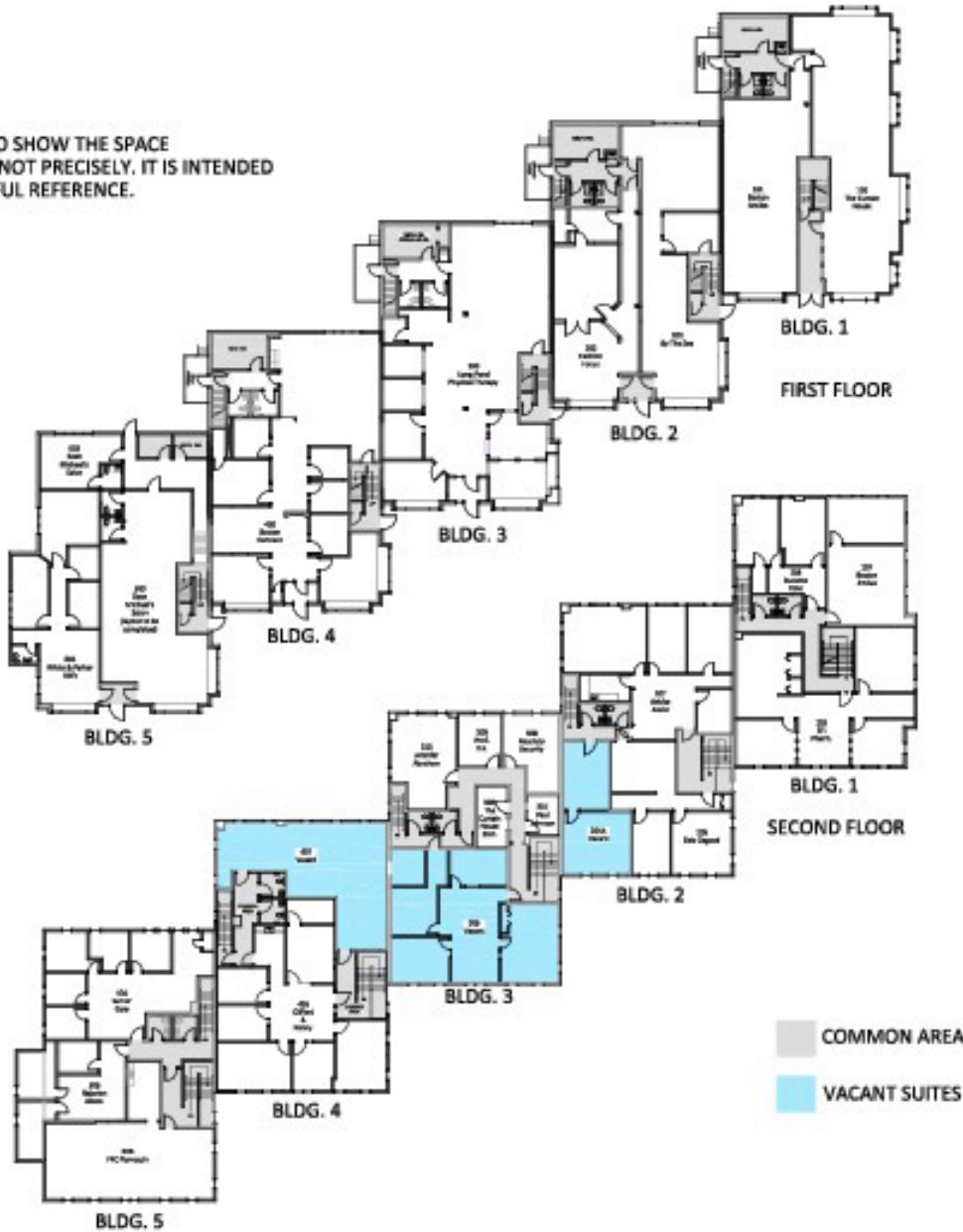
Brick Kiln Place is a professionally maintained, Multi-Tenant office/retail building. Ideal uses include office, medical or retail businesses. Great Signage opportunity and many nearby amenities for added convenience.

## PROPERTY HIGHLIGHTS

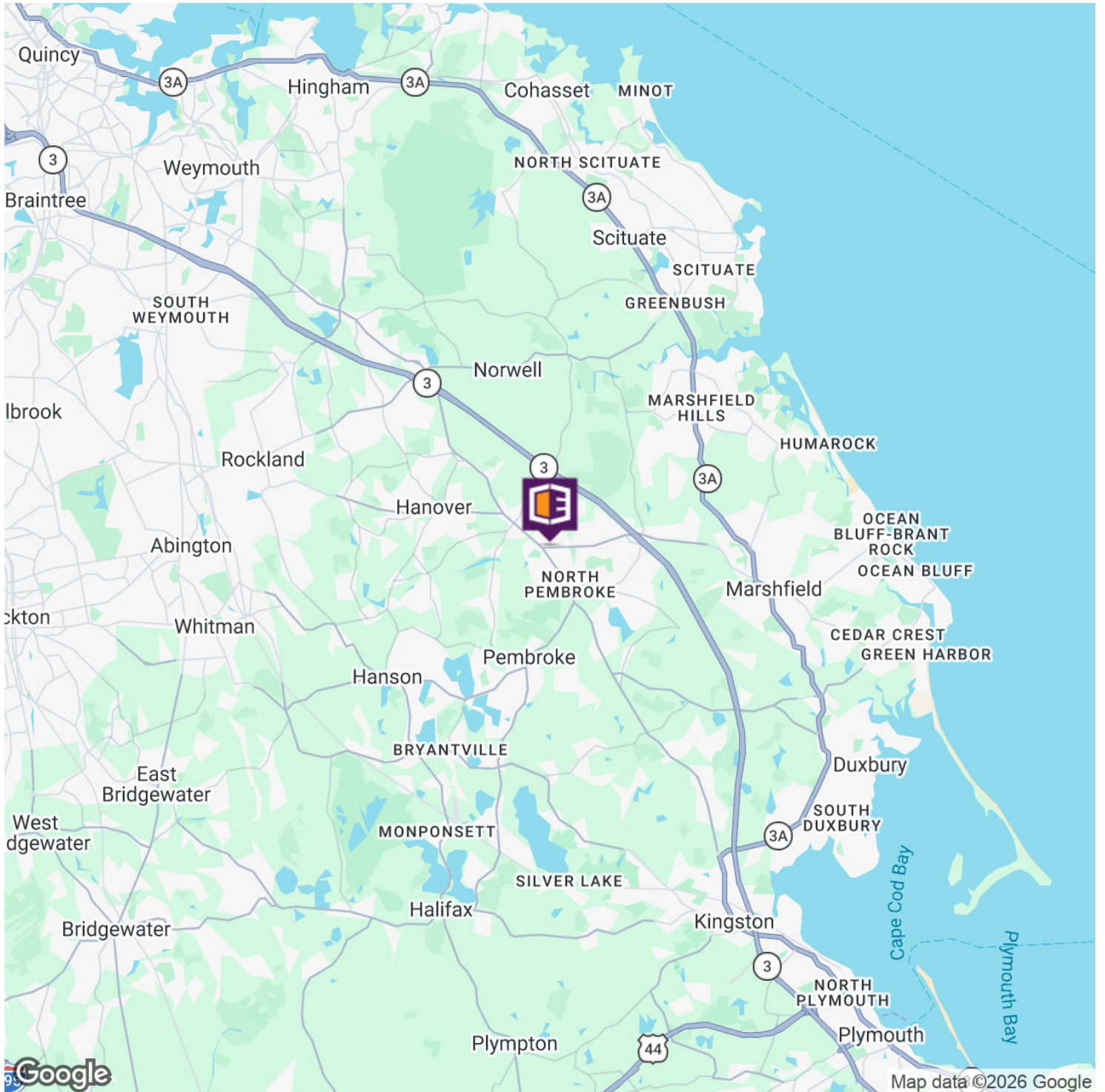
- - Prime intersection of Route 53 and 139
- - High visibility with 15,000 cars passing daily
- - Professional property management
- - Ideal for diverse business professionals
- - Ample parking for tenants and visitors
- - Modern and well-maintained facilities
- - Flexible leasing options available
- - Proximity to dining and retail amenities
- - State-of-the-art security features

# BRICK KILN PLACE

THIS PLAN IS TO SHOW THE SPACE AGRAMMATICALLY AND NOT PRECISELY. IT IS INTENDED AS A HELPFUL REFERENCE.



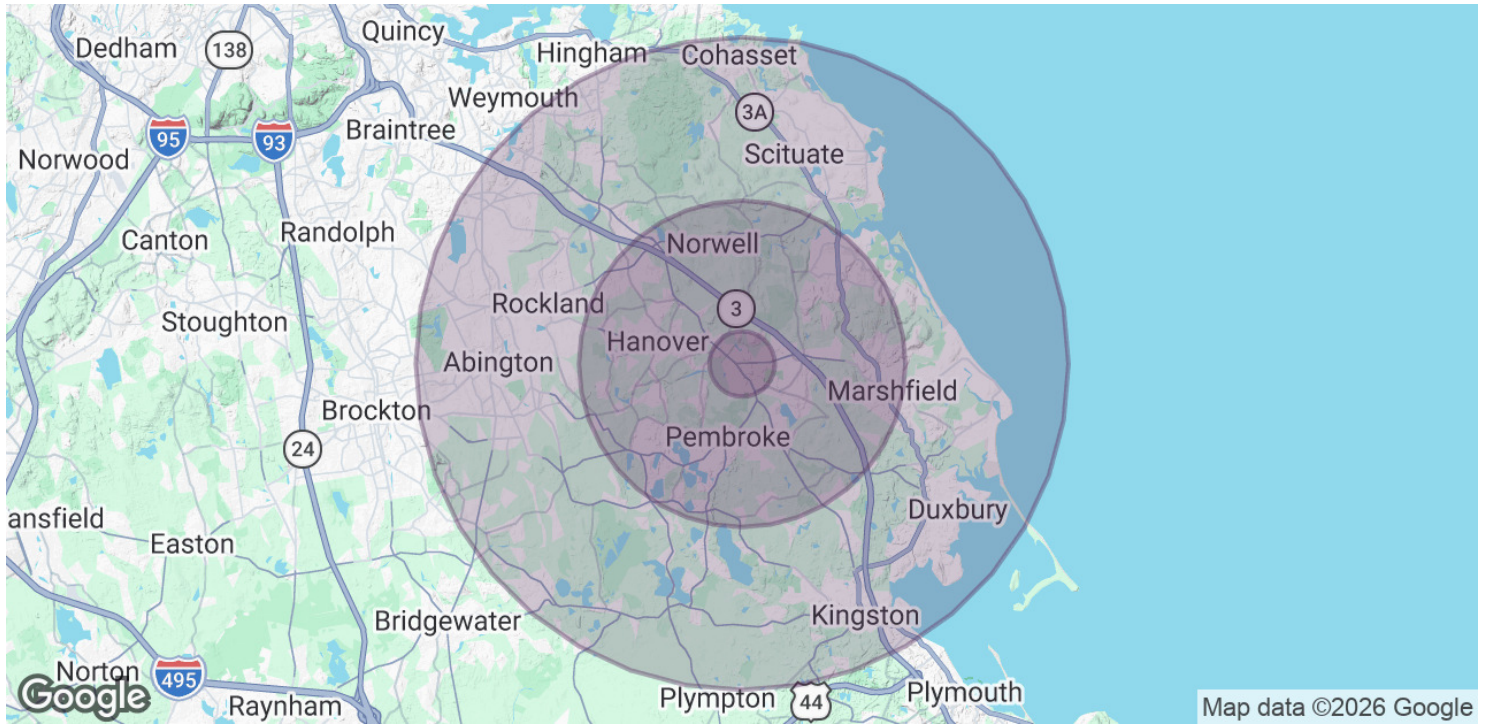
# BRICK KILN PLACE



**DAVE ELLIS, SIOR**  
781.919.0800 x701  
dave@ellisrealtyadvisors.com

**KERRICK PIERCE**  
781.919.0800 x710  
kpierce@ellisrealtyadvisors.com

# BRICK KILN PLACE



POPULATION	1 MILE	5 MILES	10 MILES
Total Population	1,959	53,167	207,005
Median age	40.9	41.0	41.2
Median age (Male)	40.7	40.1	40.0
Median age (Female)	40.3	41.4	42.1

HOUSEHOLDS & INCOME	1 MILE	5 MILES	10 MILES
Total households	693	18,753	75,143
# of persons per HH	2.8	2.8	2.8
Average HH income	\$109,205	\$111,946	\$105,408
Average house value	\$500,258	\$494,014	\$460,847

\* Demographic data derived from 2020 ACS - US Census



**DAVE ELLIS, SIOR**  
 781.919.0800 x701  
 dave@ellisrealtyadvisors.com

**KERRICK PIERCE**  
 781.919.0800 x710  
 kpierce@ellisrealtyadvisors.com