

FREEDOM FAMILY PROPERTIES LLC 225 N MAIN ST. SUITE D

225 N MAIN ST, NORTH WEBSTER, IN 46555

OFFICE BUILDING
FOR LEASE



FOR MORE INFORMATION, CONTACT:

JAN ORBAN BROKER

JAN@BRIANPETERSONGROUP.COM
574.551.0121

BRIAN PETERSON

BPG@BRIANPETERSONGROUP.COM
574.268.1899

2008 E. CENTER STREET WARSAW, IN 46508 BRIANPETERSONGROUP.COM



BRIAN PETERSON
REAL ESTATE



FREEDOM FAMILY PROPERTIES LLC 225 N MAIN ST. SUITE D**225 N MAIN ST, NORTH WEBSTER, IN 46555****OFFERING SUMMARY**

Lease Rate:	\$1,000.00 per month (Gross)
Building Size:	950 SF
Available SF:	950 SF
Year Built:	2002
Zoning:	Commercial

PROPERTY OVERVIEW

Modified Gross

PROPERTY HIGHLIGHTS

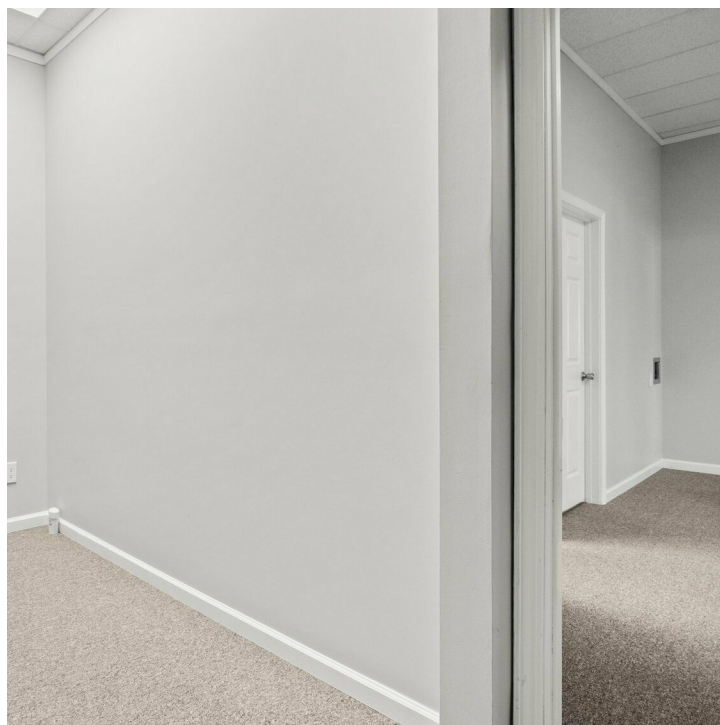
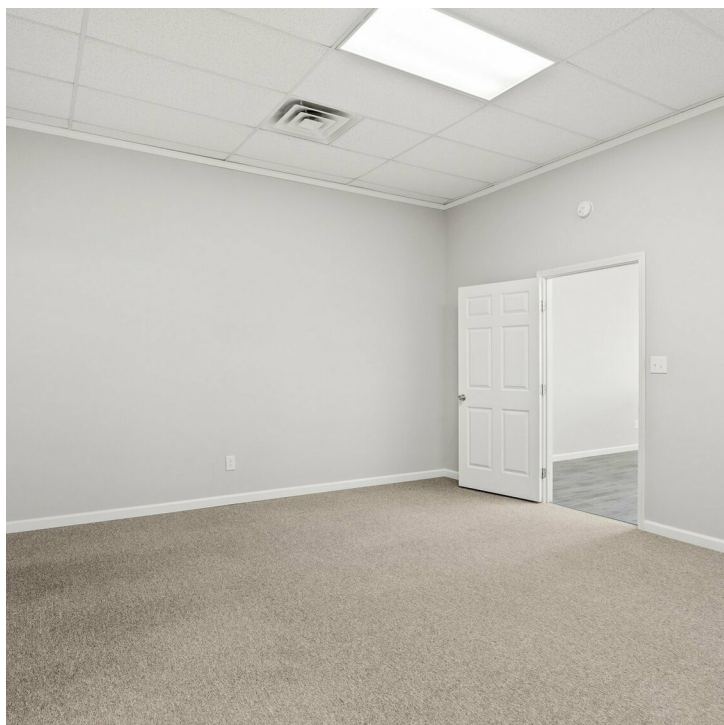
- Professional Office or Retail Space
- Signage available on Monument Sign
- On-Site Parking
- Located in the heart of North Webster
- No common areas
- 1st Month RENT FREE!

FOR MORE INFORMATION, CONTACT:

JAN ORBAN BROKERJAN@BRIANPETERSONGROUP.COM
574.551.0121**BRIAN PETERSON**BPG@BRIANPETERSONGROUP.COM
574.268.18992008 E. CENTER STREET WARSAW, IN 46508 **BRIANPETERSONGROUP.COM****BRIAN PETERSON**
REAL ESTATE

FREEDOM FAMILY PROPERTIES LLC 225 N MAIN ST. SUITE D

225 N MAIN ST, NORTH WEBSTER, IN 46555



FOR MORE INFORMATION, CONTACT:

JAN ORBAN BROKER

JAN@BRIANPETERSONGROUP.COM
574.551.0121

BRIAN PETERSON

BPG@BRIANPETERSONGROUP.COM
574.268.1899

2008 E. CENTER STREET WARSAW, IN 46508 BRIANPETERSONGROUP.COM



BRIAN PETERSON
REAL ESTATE



FREEDOM FAMILY PROPERTIES LLC 225 N MAIN ST. SUITE D

225 N MAIN ST, NORTH WEBSTER, IN 46555



Google

FOR MORE INFORMATION, CONTACT:

JAN ORBAN BROKER

JAN@BRIANPETERSONGROUP.COM
574.551.0121

BRIAN PETERSON

BPG@BRIANPETERSONGROUP.COM
574.268.1899



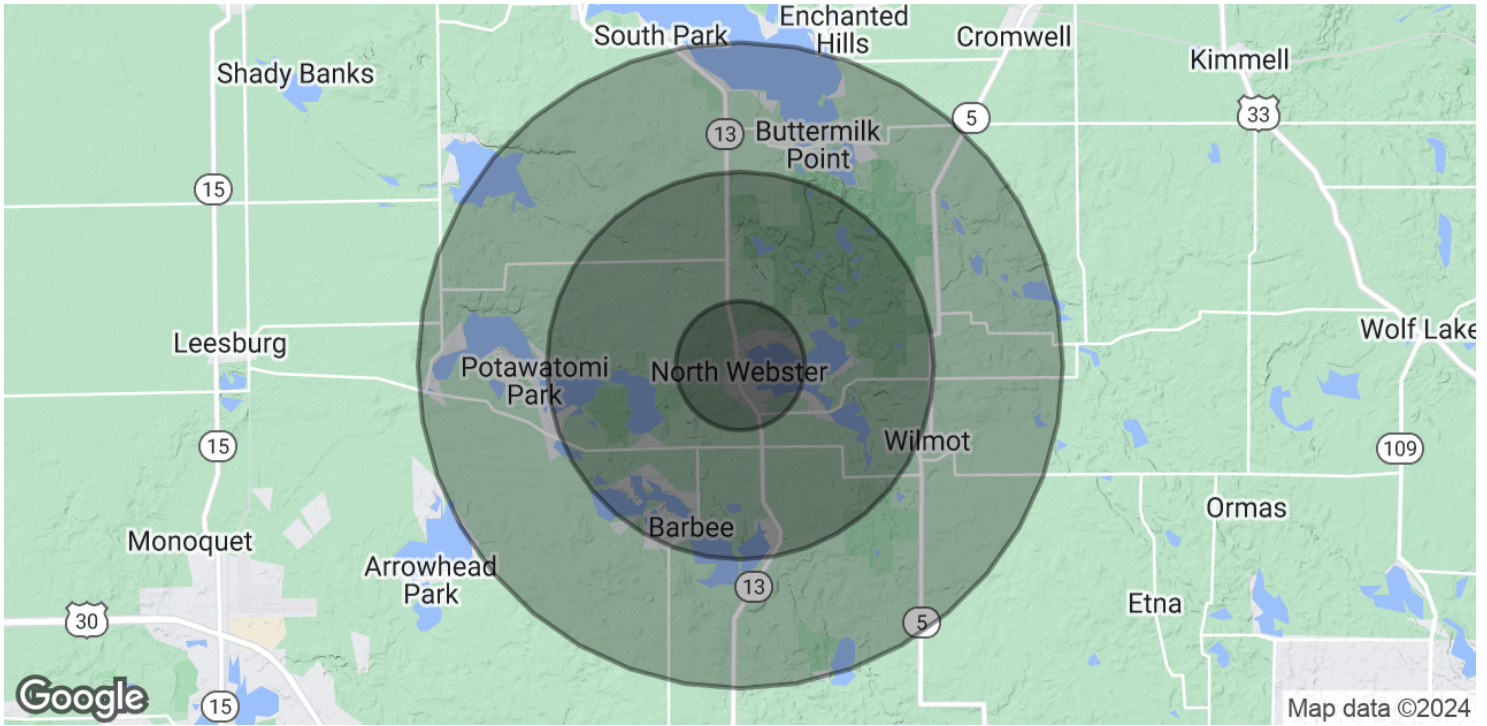
BRIAN PETERSON
REAL ESTATE

2008 E. CENTER STREET WARSAW, IN 46508 BRIANPETERSONGROUP.COM



FREEDOM FAMILY PROPERTIES LLC 225 N MAIN ST. SUITE D

225 N MAIN ST, NORTH WEBSTER, IN 46555



POPULATION	1 MILE	3 MILES	5 MILES
Total Population	1,018	5,343	11,244
Average Age	47.9	44.8	44.0
Average Age (Male)	49.2	45.7	43.7
Average Age (Female)	47.6	45.0	43.8

HOUSEHOLDS & INCOME	1 MILE	3 MILES	5 MILES
Total Households	741	4,028	8,289
# of Persons per HH	1.4	1.3	1.4
Average HH Income	\$45,015	\$45,275	\$47,446
Average House Value	\$167,441	\$212,836	\$223,847

2020 American Community Survey (ACS)

FOR MORE INFORMATION, CONTACT:

JAN ORBAN BROKER

JAN@BRIANPETERSONGROUP.COM
574.551.0121

BRIAN PETERSON

BPG@BRIANPETERSONGROUP.COM
574.268.1899



BRIAN PETERSON
REAL ESTATE



2008 E. CENTER STREET WARSAW, IN 46508 BRIANPETERSONGROUP.COM