

1241-1247  
3RD STREET  
SANTA MONICA PROMENADE

1241-1247



SANTA MONICA PROMENADE

3RD  
STREET






RETAIL / RESTAURANT  
/ ENTERTAINMENT

FROM 3,000 TO 7,500 SF  
FOR LEASE



# PREMIER SANTA MONICA PROMENADE LOCATION

Seize this rare opportunity to establish your brand in the epicenter of Santa Monica's prime retail corridor. This trophy assemblage of 1241-1247 3rd Street delivers an exceptional 14,400 SF of flexible retail, restaurant, or entertainment space along the world-renowned Third Street Promenade.

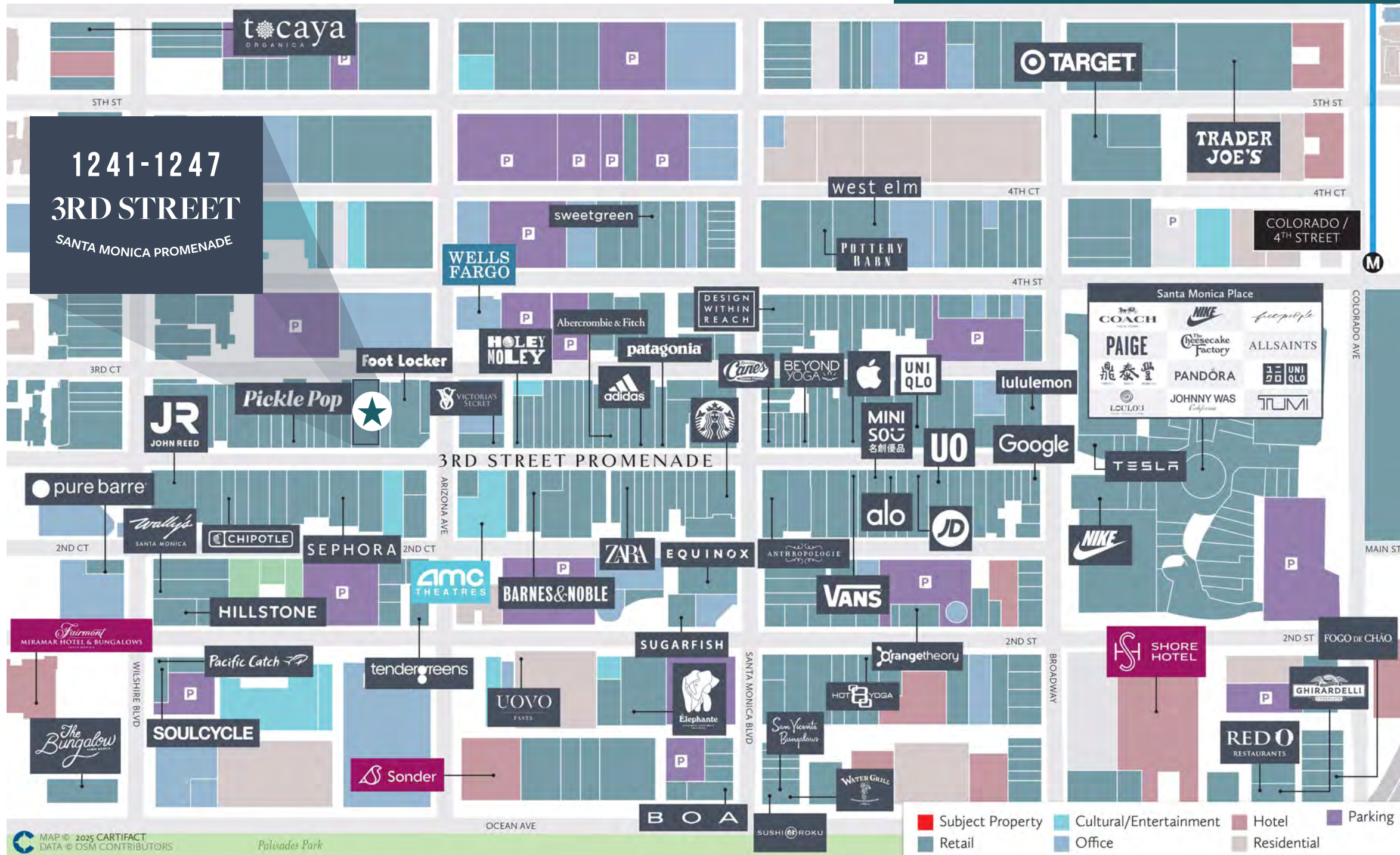
-  **Prime Third Street Promenade Location** – Trophy retail space in Santa Monica's premier pedestrian district with nearly 24 million annual visitors
-  **Flexible Premium Space** – 14,400 SF total across three buildings with soaring ceilings, divisible from 3,000 SF to 7,500 SF per unit
-  **Exceptional Visibility and Traffic** – Expansive frontage with outstanding daytime and nighttime pedestrian exposure
-  **Unmatched Convenience** – Six public parking structures with 90-minute free parking and proximity to flagship retailers like Apple Store LA, Google, Target, Uniqlo, Trader Joe's, and Sephora.
-  **Entertainment District** – Heart of Santa Monica's dynamic retail and entertainment ecosystem surrounded by boutiques, restaurants and tremendous residential.





# SANTA MONICA PROMENADE

# 3-MILE DEMOGRAPHICS



**\$196,791**  
Average household income

**\$3.8B**  
Total retail spending

41.0  
Median age

214,181  
Daytime population

**\$1,933,127**  
Median home value

78%  
College degree



Welcome to Santa Monica Promenade

Target — Apple — Google — Tesla  
Nike — Uniqlo — Trader Joe's  
Lululemon — Patagonia — Adidas  
Vans — Zara — Sephora — Barnes &  
Noble — Foot Locker — Wells Fargo  
AMC — Starbucks — Aesop —  
AllSaints

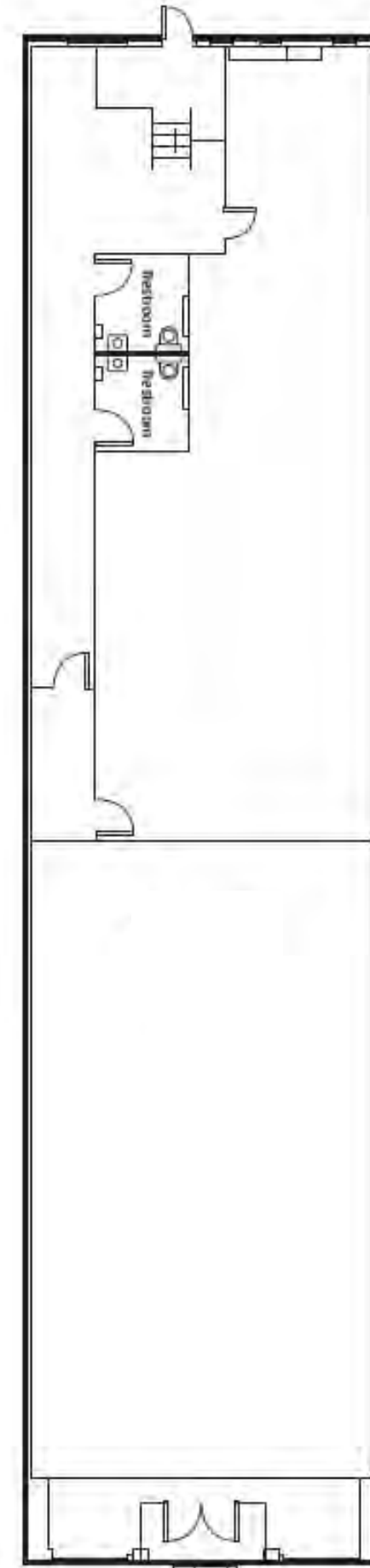


# 1241

3RD STREET SANTA MONICA PROMENADE

**Size:**

±3,900 SF

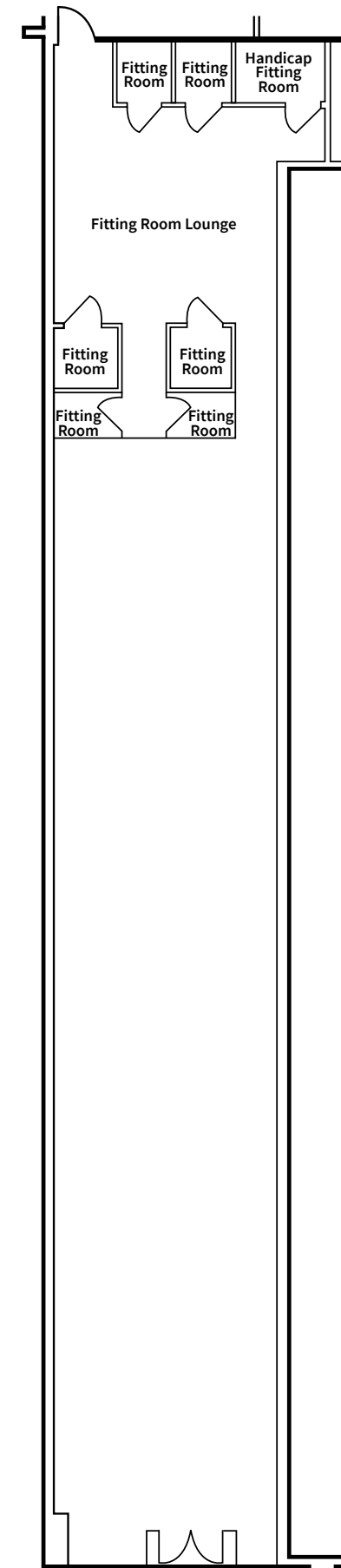
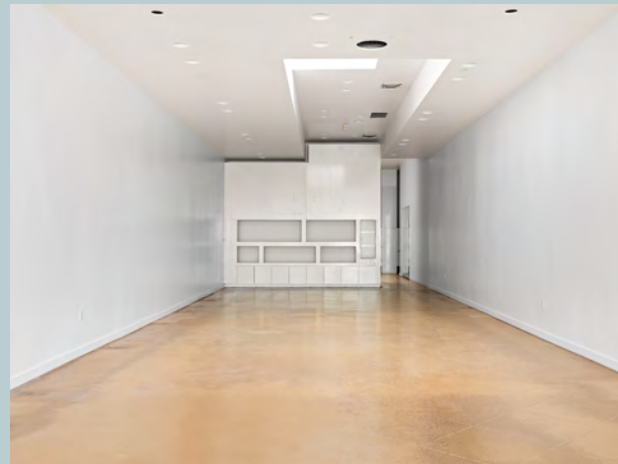


# 1245

3RD STREET SANTA MONICA PROMENADE

**Size:**

±3,000 SF



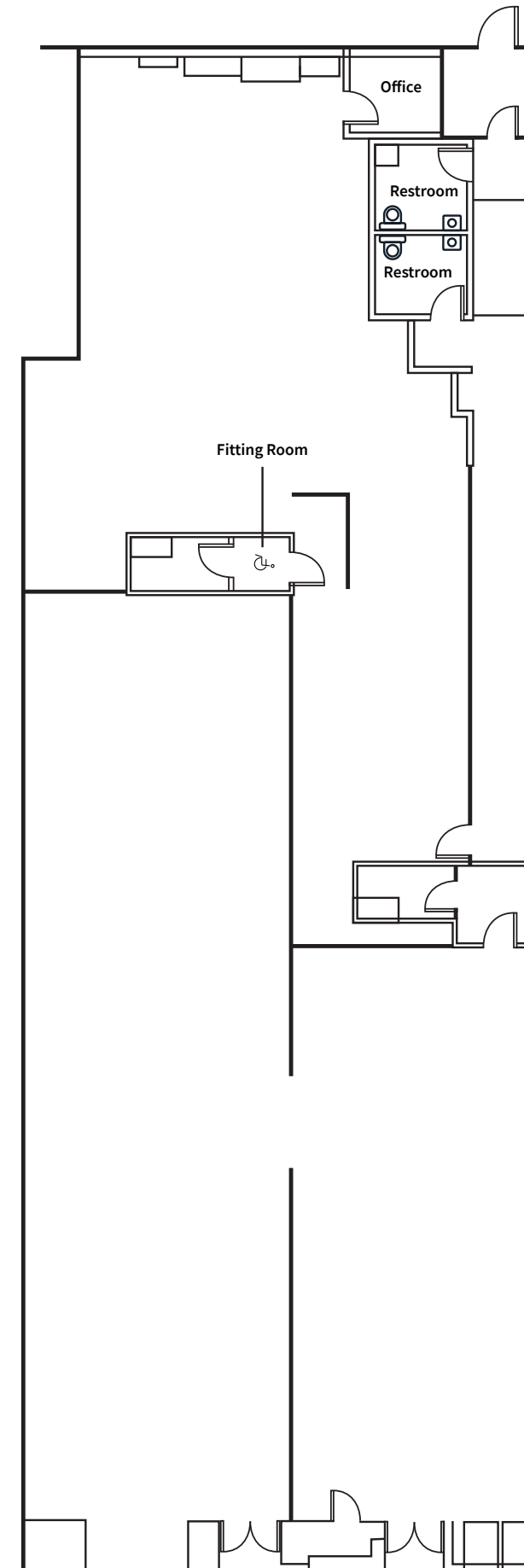
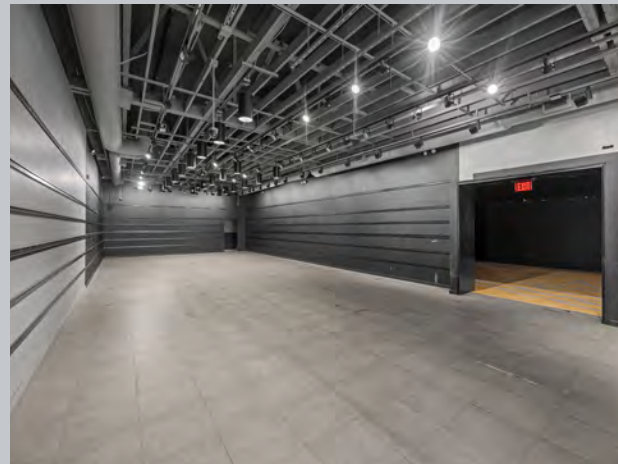
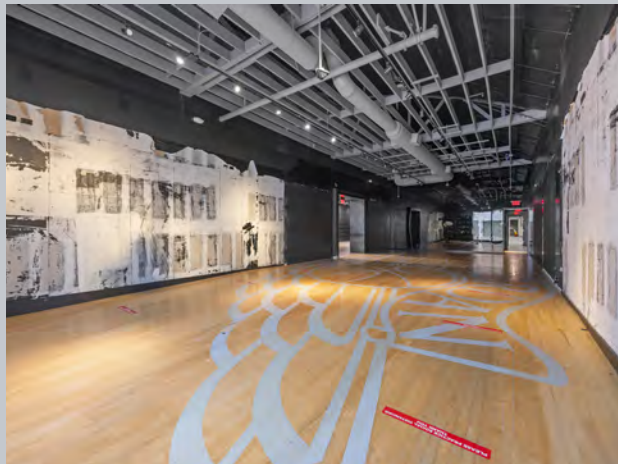


# 1247

3RD STREET SANTA MONICA PROMENADE

**Size:**

±7,500 SF



1241-1247  
3RD STREET  
SANTA MONICA PROMENADE

RETAIL /  
RESTAURANT  
/ ENTERTAINMENT

SANTA MONICA PROMENADE

---

## Devin Klein

+1 310 595 3641  
CA LIC. #01471525  
RE LIC. #01815298

## Matthew Fainchtein

Managing Director  
matthew.fainchtein@jll.com  
+1 310 430 2548  
CA LIC. #01503546

## Ryan Hawley

Vice President  
ryan.hawley@jll.com  
+1 213 393 3300  
CA LIC. #02146998



Although information has been obtained from sources deemed reliable, JLL does not make any guarantees, warranties or representations, express or implied, as to the completeness or accuracy as to the information contained herein. Any projections, opinions, assumptions or estimates used are for example only. There may be differences between projected and actual results, and those differences may be material. JLL does not accept any liability for any loss or damage suffered by any party resulting from reliance on this information. If the recipient of this information has signed a confidentiality agreement with JLL regarding this matter, this information is subject to the terms of that agreement. ©2025 Jones Lang LaSalle Brokerage, Inc. All rights reserved.

Jones Lang LaSalle Brokerage, Inc. | Real Estate License #: 01856260