

BOUTIQUE RETAIL CENTER / FOR LEASE

135TH STREET & ROE AVENUE • LEAWOOD, KS



PROPERTY INFORMATION

- NWQ 135th & Roe Avenue
- Leawood's Premier Event Space: *'The Venue'*
- Strong Retail & Residential Market
- Excellent Parking

AVAILABLE SPACE(S)

- **2,250 SF (Unit 170)**
- **2,570 SF (Unit 250)**
- **Lease Rates - \$24.50 / SF NNN**

DEMOGRAPHICS

| | 1 MILE | 3 MILES | 5 MILES |
|----------------------|-----------|-----------|-----------|
| Est. Population: | 9,121 | 73,690 | 163,176 |
| Total Households: | 4,815 | 47,252 | 102,865 |
| AVG. HH Income: | \$180,343 | \$154,106 | \$142,123 |
| Est. # of Employees: | 3,180 | 74,477 | 131,091 |

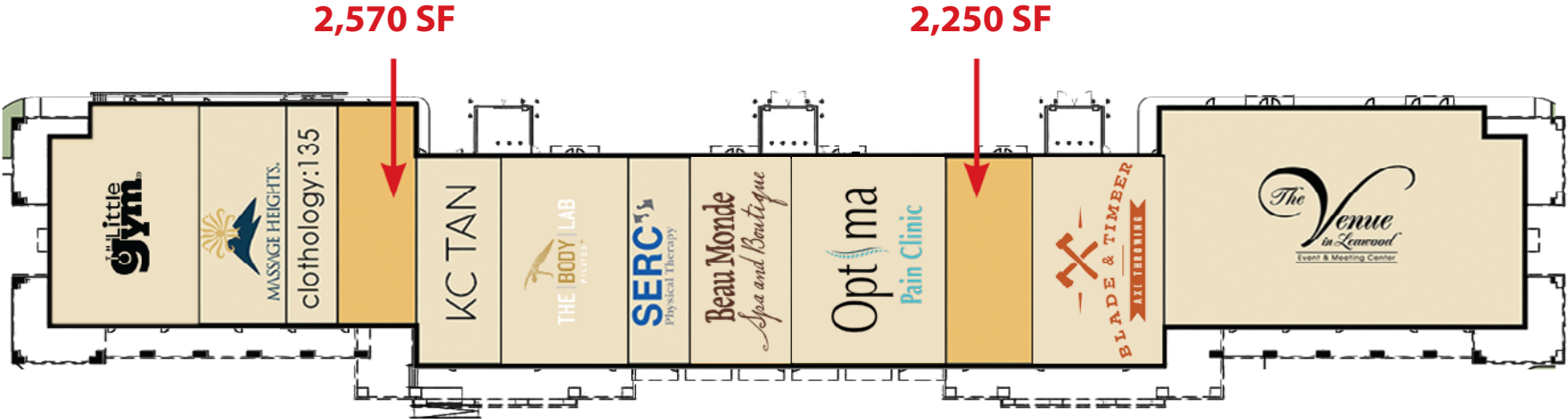


BOUTIQUE RETAIL CENTER / FOR LEASE

135TH STREET & ROE AVENUE • LEAWOOD, KS



SITE PLAN



BOUTIQUE RETAIL CENTER / FOR LEASE

135TH STREET & ROE AVENUE • LEAWOOD, KS



SITE PLAN



BOUTIQUE RETAIL CENTER / FOR LEASE

135TH STREET & ROE AVENUE • LEAWOOD, KS



AVAILABLE



2,250 SF



2,570 SF

**GASPERI
GROUP**
COMMERCIAL REAL ESTATE LLC



Gasperigroup.com

STEVE GASPERI
steve@gasperigroup.com
M | 816-591-9764

BOUTIQUE RETAIL CENTER / FOR LEASE

135TH STREET & ROE AVENUE • LEAWOOD, KS



CURRENT TENANTS



GASPERI GROUP
COMMERCIAL REAL ESTATE LLC



GasperiGroup.com

STEVE GASPERI
steve@gasperigroup.com
M | 816-591-9764

BOUTIQUE RETAIL CENTER / FOR LEASE

135TH STREET & ROE AVENUE • LEAWOOD, KS



**GASPERI
GROUP**
COMMERCIAL REAL ESTATE LLC

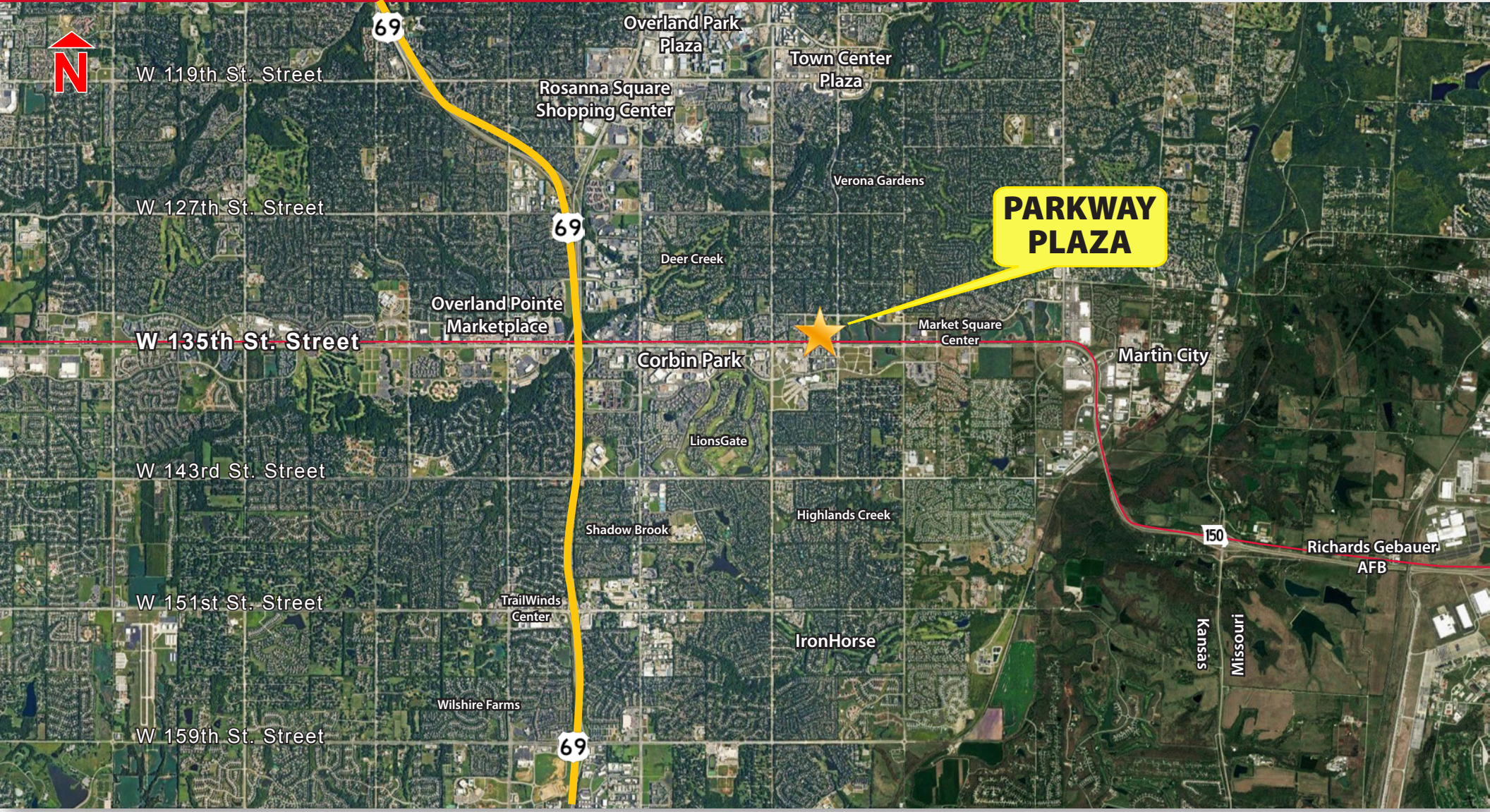


Gasperigroup.com

STEVE GASPERI
steve@gasperigroup.com
M | 816-591-9764

BOUTIQUE RETAIL CENTER / FOR LEASE

135TH STREET & ROE AVENUE • LEAWOOD, KS



Gasperi Group Commercial Real Estate, LLC
4121 W. 83rd St., Ste. 107, Prairie Village, Kansas 66208

**GASPERI
GROUP**
COMMERCIAL REAL ESTATE LLC



GasperiGroup.com

This document has been prepared by Gasperi Group for advertising and general information only. Gasperi Group makes no guarantees, representations or warranties of any kind, expressed or implied, regarding the information including, but not limited to, warranties of content, accuracy and reliability. Any interested party should undertake their own inquiries as to the accuracy of the information. Gasperi Group excludes unequivocally all inferred or implied terms, conditions and warranties arising out of this document and excludes all liability for loss and damages arising there from. This publication is the copyrighted property of Gasperi Group and/or its licensor(s). © 2024. All rights reserved.