

1100 Calvary Rd. Churchville, MD 21028

PROPERTY FOR SALE w/ Retail & Residential Space Included



Listing Price: \$750,000.00

PROPERTY QUICK FACTS



- A mixed-use property featuring a residence and retail space
- Two-story frame dwelling with approximately 2,800 sq ft of living space
- Multi-Unit Include:
 - 3 Bedroom Residential—2,800 sq. ft.
 - 1 Bedroom Apartment—850 sq. ft.
 - Basement Storage—1,100 sq. ft.
 - Retail/Office—1,600 sq. ft.
 - Freestanding Office/Storage—400 sq. ft.
- Sits on .56 acres
- 7,076 +/- Square Footage Available
- Zoned B1

DEMOGRAPHICS:

Population	2 MILE	5 MILE
2024 Total Population:	3,373	101,543
Pop. Growth 2024-2028:	0.7%	0.6%
Average Age:	44.7	41.1

Households

2024 Total Households:	1,207	38,484
Median Household Income:	\$116,452	\$101,370
Avg. Household Size:	2.7	2.6



CONTACT

Mike Maxwell
443-866-9889

mikem@bcvcommercial.com

Nick Courtalis
410-303-7900

nickc@bcvcommercial.com

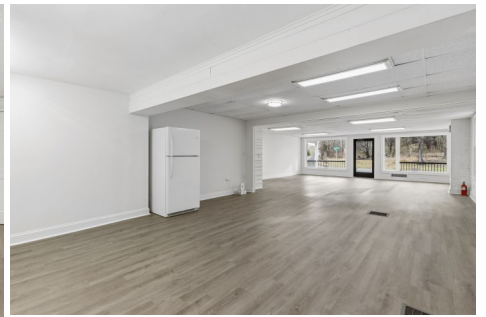


1920 Rock Spring Road, Suite 101 Forest Hill, MD 21050
Ph. 410.296.2626 | Fax 410.296.2660

DISCLAIMER: The information provided herein was furnished by Seller indicated above & evidenced by the Exclusive Agreement. Broker makes no representations as to the accuracy or reliability of said information. We recommend financial & legal counsel be available to assist you throughout the transaction due to the significance of this data.

1100 Calvary Rd. Churchville, MD 21028

PROPERTY FOR SALE w/ Retail & Residential Space Included



1920 Rock Spring Road, Suite 101 Forest Hill, MD 21050
Ph. 410.296.2626 | Fax 410.296.2660