

1320 PARKWAY- DAYCARE OPPORTUNITY

1320 Parkway Ave | Ewing, NJ 08628

For Lease



Property Overview

Available
8,340 SF

Surrounding Retailers

1320 Parkway is adjacent to Suburban Square which is an upscale strip mall has an eclectic mixture of retail tenants including: CVS, Captain Laundry, LA Perfection Nails, Villa Rosa Restaurant, and Five Guys. Also, adjacent to many incoming residential developments.



1000 Germantown Pike, Suite A-2 | Plymouth Meeting, PA 19462 | www.PennmarkProperties.com | 610-272-6500 x126

The following materials provided have been obtained from sources believed reliable. Pennmark Management Company, INC. has not verified, and makes no guarantee, warranty or representation about the information presented. Any projections, assumptions or estimates used, are for example only, and do not represent the current or future performance of the property.

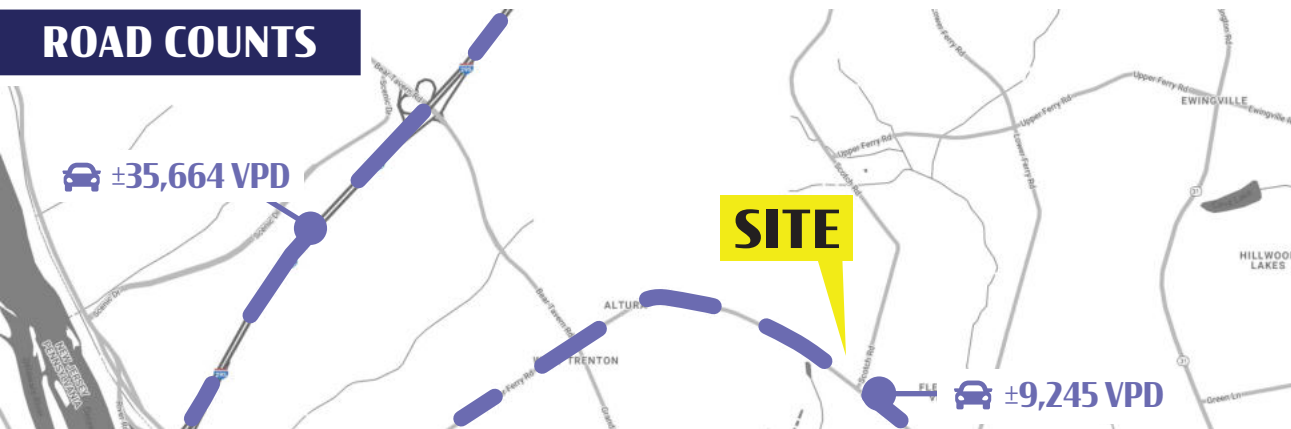


1320 PARKWAY- DAYCARE OPPORTUNITY

For Lease

1320 Parkway Ave | Ewing, NJ 08628

ROAD COUNTS



| DEMOGRAPHICS | 1 MILE | 5 MILE | 10 MILE |
|------------------|----------|-----------|-----------|
| TOTAL POPULATION | 6,556 | 204,802 | 537,061 |
| TOTAL EMPLOYEES | 5,720 | 99,148 | 267,936 |
| AVERAGE HHI | \$81,893 | \$106,597 | \$122,745 |
| TOTAL HOUSEHOLDS | 2,736 | 73,648 | 197,991 |



1000 Germantown Pike, Suite A-2 | Plymouth Meeting, PA 19462 | www.PennmarkProperties.com | 610-272-6500 x126

The following materials provided have been obtained from sources believed reliable. Pennmark Management Company, INC. has not verified, and makes no guarantee, warranty or representation about the information presented. Any projections, assumptions or estimates used, are for example only, and do not represent the current or future performance of the property.



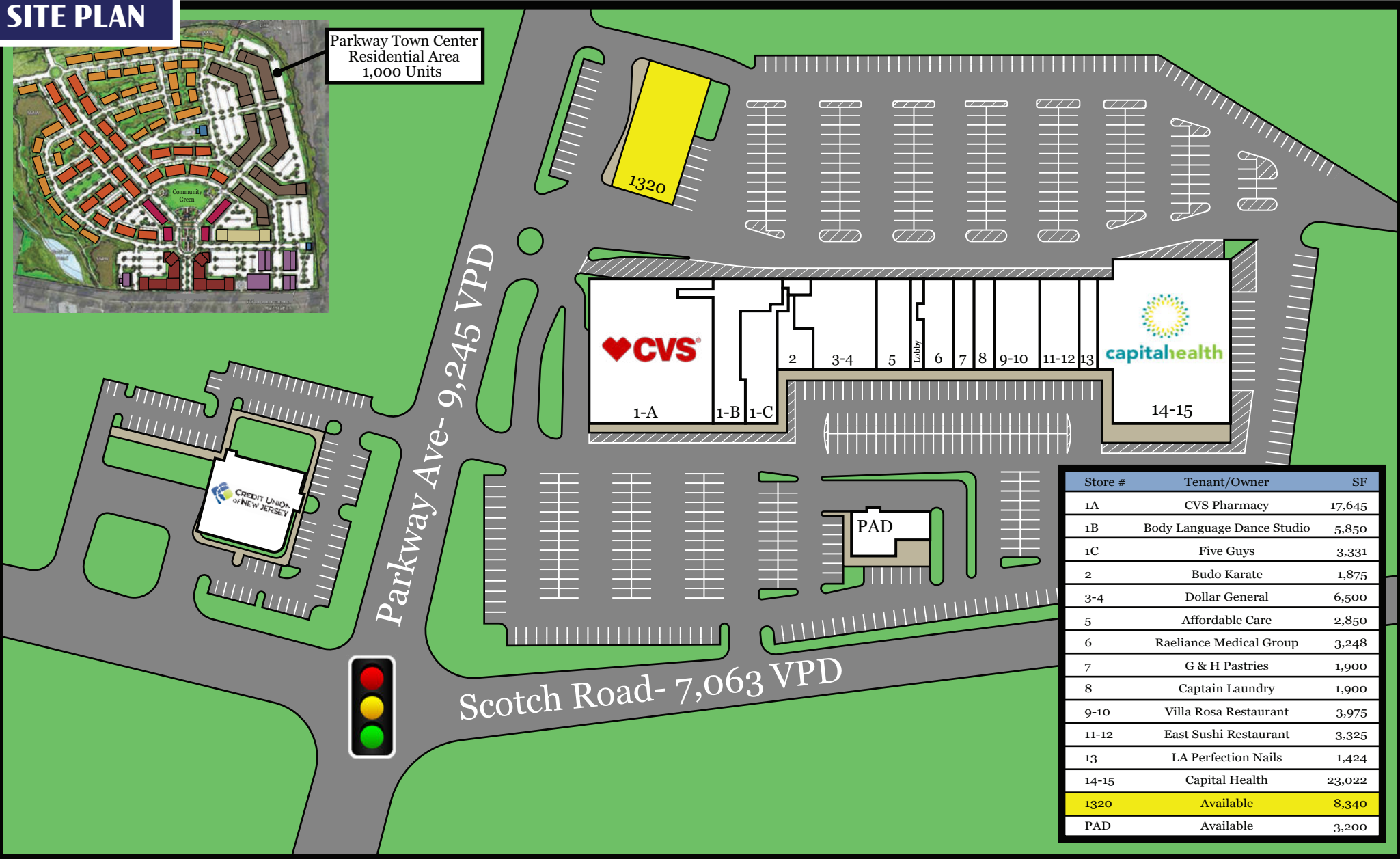
1320 PARKWAY- DAYCARE OPPORTUNITY

For Lease

1320 Parkway Ave | Ewing, NJ 08628

SITE PLAN

Parkway Town Center Residential Area
1,000 Units



| Store # | Tenant/Owner | SF |
|---------|----------------------------|--------|
| 1A | CVS Pharmacy | 17,645 |
| 1B | Body Language Dance Studio | 5,850 |
| 1C | Five Guys | 3,331 |
| 2 | Budo Karate | 1,875 |
| 3-4 | Dollar General | 6,500 |
| 5 | Affordable Care | 2,850 |
| 6 | Raeliance Medical Group | 3,248 |
| 7 | G & H Pastries | 1,900 |
| 8 | Captain Laundry | 1,900 |
| 9-10 | Villa Rosa Restaurant | 3,975 |
| 11-12 | East Sushi Restaurant | 3,325 |
| 13 | LA Perfection Nails | 1,424 |
| 14-15 | Capital Health | 23,022 |
| 1320 | Available | 8,340 |
| PAD | Available | 3,200 |

1000 Germantown Pike, Suite A-2 | Plymouth Meeting, PA 19462 | www.PennmarkProperties.com | 610-272-6500 x126

The following materials provided have been obtained from sources believed reliable. Penmark Management Company, INC. has not verified, and makes no guarantee, warranty or representation about the information presented. Any projections, assumptions or estimates used, are for example only, and do not represent the current or future performance of the property.

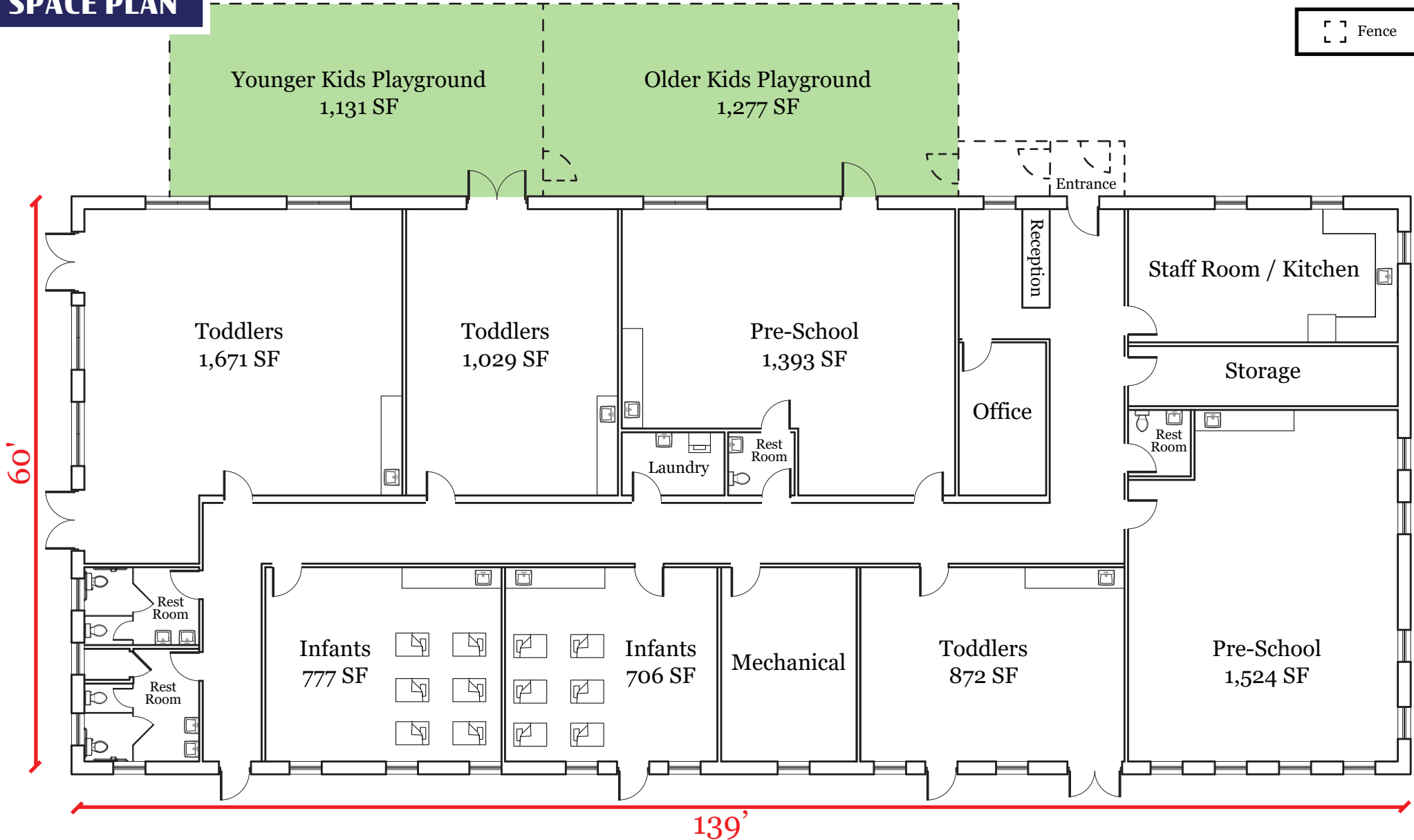


1320 PARKWAY- DAYCARE OPPORTUNITY

For Lease

1320 Parkway Ave | Ewing, NJ 08628

SPACE PLAN



1000 Germantown Pike, Suite A-2 | Plymouth Meeting, PA 19462 | www.PennmarkProperties.com | 610-272-6500 x126

The following materials provided have been obtained from sources believed reliable. Penmark Management Company, INC. has not verified, and makes no guarantee, warranty or representation about the information presented. Any projections, assumptions or estimates used, are for example only, and do not represent the current or future performance of the property.



1320 PARKWAY- DAYCARE OPPORTUNITY

1320 Parkway Ave | Ewing, NJ 08628

For Lease



RESIDENTIAL IMPACT

2,128 Units

- Ewing Town Center- 1,100 Apartments
- Heritage Court- 392 Apartments
- WoodBrook House- 96 Apartments
- Housing Development- 210 Homes
- Ewing Prop, LLC- 330 Apartments

1320 PARKWAY- DAYCARE OPPORTUNITY

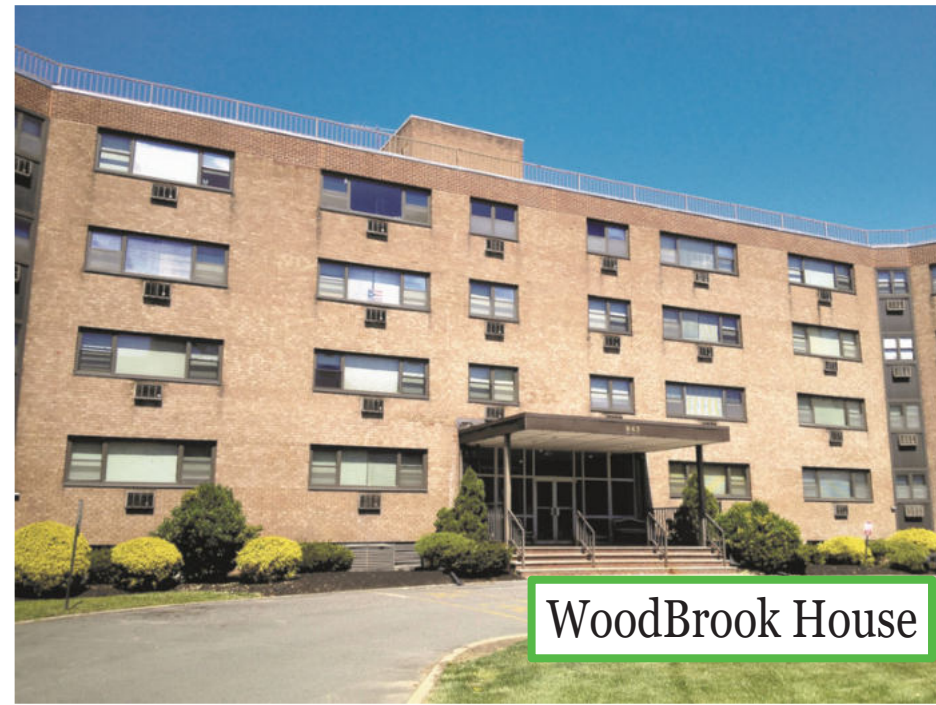
For Lease

1320 Parkway Ave | Ewing, NJ 08628

RESIDENTIAL DEVELOPMENTS



Ewing Town Center



WoodBrook House



Housing Development



Heritage Court

1000 Germantown Pike, Suite A-2 | Plymouth Meeting, PA 19462 | www.PennmarkProperties.com | 610-272-6500 x126

The following materials provided have been obtained from sources believed reliable. Penmark Management Company, INC. has not verified, and makes no guarantee, warranty or representation about the information presented. Any projections, assumptions or estimates used, are for example only, and do not represent the current or future performance of the property.

