



2318 YORK RD, LUTHERVILLE TIMONIUM, MD 21093



Laura Rosen

📞 (443) 865-5356

☎ (443) 283-3808

✉ Laura@tenantcommercial.com



www.tenantcommercial.com

Tenant Commercial Advisors

1 Sanford Ave, Catonsville, MD 21228



2318 York Rd, Lutherville Timonium, MD 21093

Laura Rosen | (443) 865-5356 | Laura@tenantcommercial.com



Prime Retail space is available on busy York Road located between Padonia Rd and Timonium Rd. The space includes a large Retail area, 3 offices, 1 bathroom, multiple storage rooms, a computer room, and other miscellaneous areas. The building sits on a corner lot and provides multiple ingress and egress to the property. Excellent signage is available on the building and the center pylon. 40 Customer Parking Spaces. Adjacent businesses include Grapes & Grains and Gibby's Seafood. Many possible business uses for this space. Formerly Urgent Care Medical.

		2023 Demographics	1 Mile	3 Miles	5 Miles
Lease	\$6,400	Population	9,438	83,550	184,883
Zoning	Business Roadside	Households	3,687	32,372	73,824
Parking	40 Spaces	Ave HH Income	\$132,608	\$124,753	\$126,285
Leasable SF	2,200 SF	Daytime Population	16,028	168,784	291,088
Bathrooms	1 Bath				
Property Condition	Very Good				
		Traffic Count	33,470 AADT York Road		

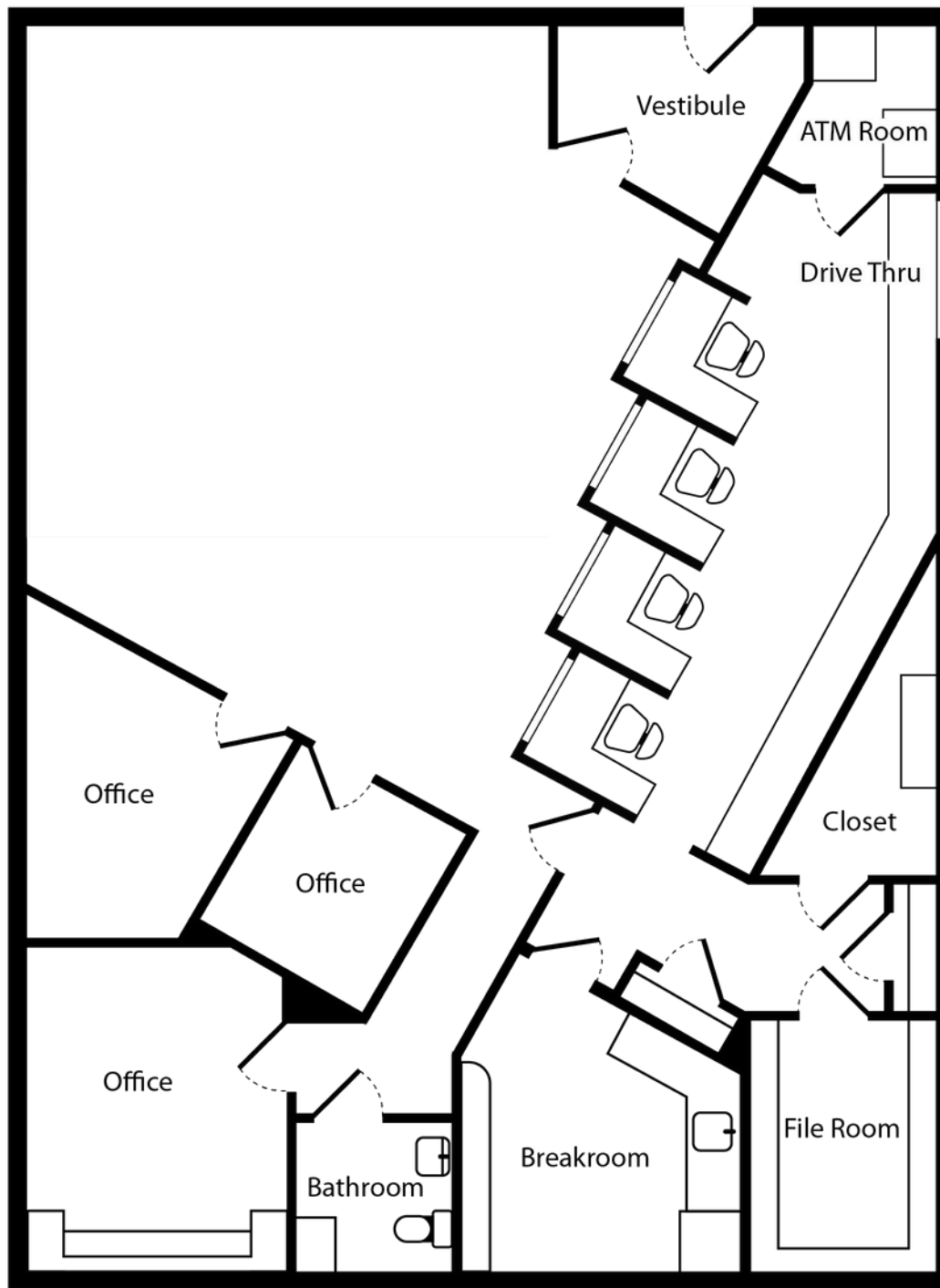


-  Shopping
-  Food & Drink
-  Health
-  Services
-  Parks
-  Entertainment
-  Schools
-  Apartments
-  Transportation

2318 York Rd, Lutherville Timonium, MD 21093

Laura Rosen | (443) 865-5356 | Laura@tenantcommercial.com





2318 York Rd, Lutherville Timonium, MD 21093

Laura Rosen | (443) 865-5356 | Laura@tennantcommercial.com