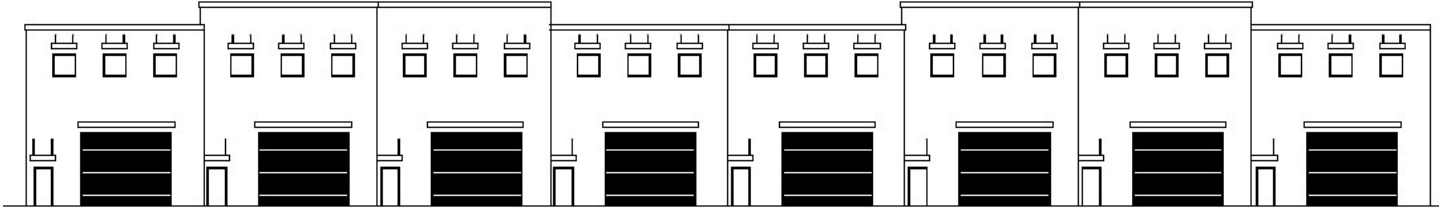




CLASSIC ULTRA
WHEN ONLY THE BEST WILL DO
Luxury Storage Condos



14547 Global Parkway Fort Myers, FL 33913

Classic Ultra provides safe, upscale, climate-controlled, garage-style luxury storage condominiums for you to keep, preserve and enjoy your most prized possessions. Classic Ultra is perfect for car collectors, motorsports enthusiasts, hobbyists, or anyone who needs extra space. **Each unit comes standard with two overhead doors (front and back), loft, and bathroom. The front and back overhead doors allow you to DRIVE THRU YOUR UNIT! No more moving your cars in and out to get the one you want!** You will not find a better constructed, higher quality storage condo. Classic Ultra is centrally located on Treeline Avenue, just south of Daniels Parkway.

Property Features

Condo Size (SF):	Ground Floor	1,500
	Loft	450
	Total	1,950
Location:	Located on Treeline Ave., just south of Daniels Parkway	
Year Built	Target Delivery Q1 2024	
Condo Fees:	\$600/quarter	

Property Highlights

- Only 17 Units
- Unit Includes Loft
- Unit Includes Bathroom in Loft which Increases Ground Floor Storage Area
- Block Construction with Insulated Walls
- Insulated Roof Rated For 160 MPH
- Complete Camera Security System With Wifi System Can Be Controlled From Phone App
- Ceiling Heights 26'
- LED Flat Panel Lighting
- Three & a Half Ton AC Unit with 16 Seer
- Gated Entrance & Perimeter Fencing
- **NOT IN A FLOOD ZONE**

For more information please contact:
Anthony R. Sartori 239-250-6535
sartorianthony@yahoo.com
Diversified Real Estate Group, Inc.

www.ClassicUltraSWFL.com

All information furnished regarding property for sale, rental or financing is from sources deemed reliable, but no warranty or representation is made to the accuracy thereof and same is subject to errors, omissions, change of price, or other conditions prior to sale, lease or financing or withdrawal without notice. No liability of any kind is to be imposed on the broker herein.

CLASSIC ULTRA
WHEN ONLY THE BEST WILL DO
Luxury Storage Condos



Representative Photo



Representative Photo



Representative Photo



Representative Photo



Representative Photo



Representative Photo

All information furnished regarding property for sale, rental or financing is from sources deemed reliable, but no warranty or representation is made to the accuracy thereof and same is subject to errors, omissions, change of price, or other conditions prior to sale, lease or financing or withdrawal without notice. No liability of any kind is to be imposed on the broker herein.

CLASSIC ULTRA
WHEN ONLY THE BEST WILL DO
Luxury Storage Condos

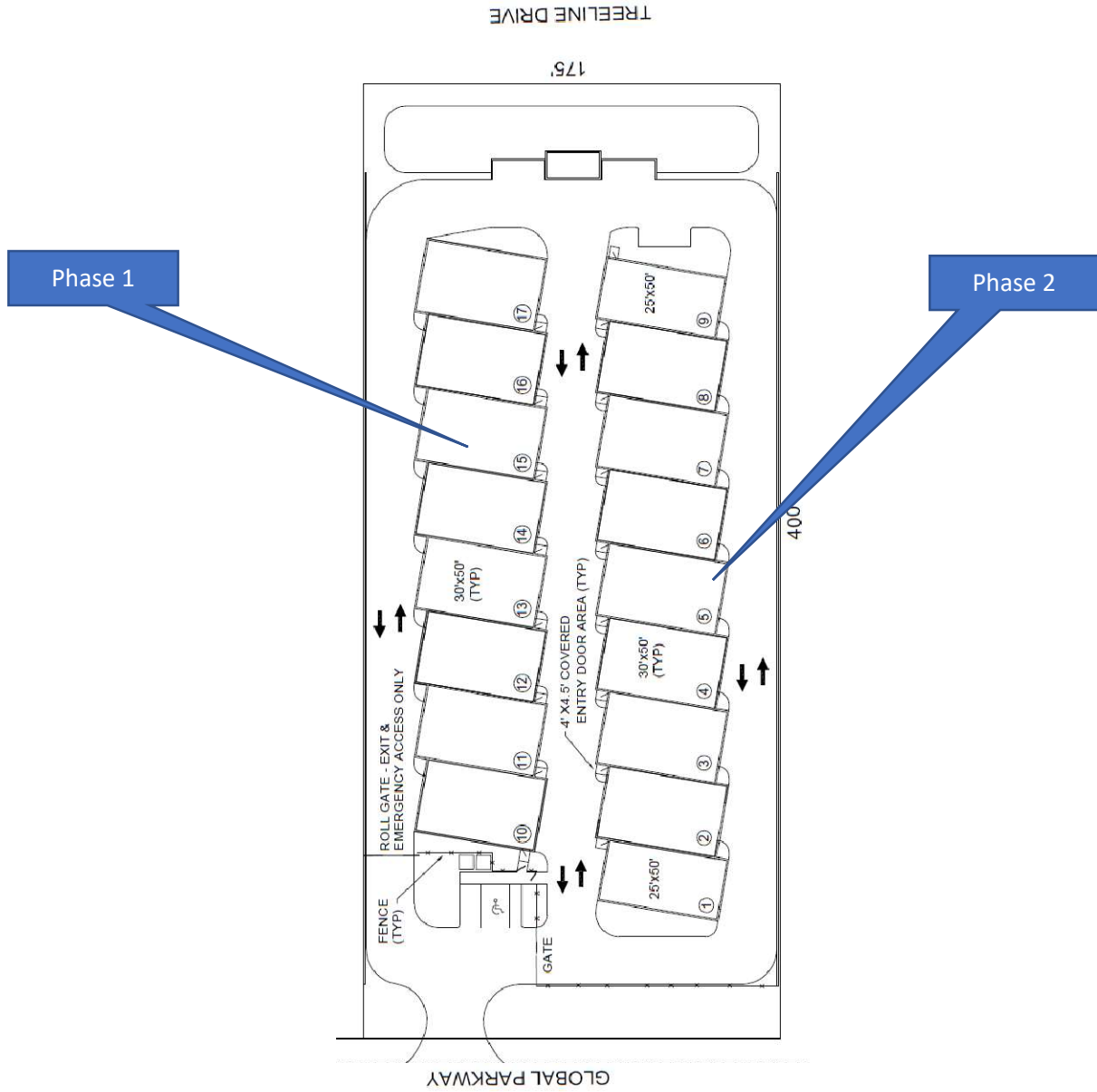
Aerial Map



All information furnished regarding property for sale, rental or financing is from sources deemed reliable, but no warranty or representation is made to the accuracy thereof and same is subject to errors, omissions, change of price, or other conditions prior to sale, lease or financing or withdrawal without notice. No liability of any kind is to be imposed on the broker herein.

CLASSIC ULTRA
WHEN ONLY THE BEST WILL DO
Luxury Storage Condos

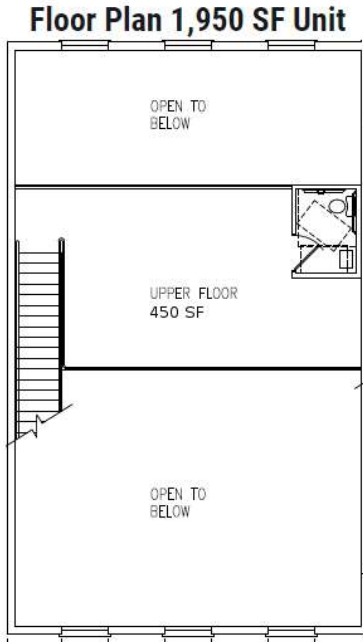
Site Plan



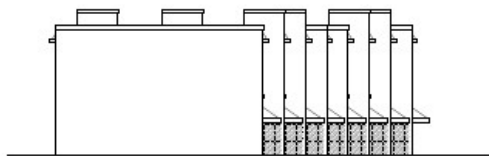
All information furnished regarding property for sale, rental or financing is from sources deemed reliable, but no warranty or representation is made to the accuracy thereof and same is subject to errors, omissions, change of price, or other conditions prior to sale, lease or financing or withdrawal without notice. No liability of any kind is to be imposed on the broker herein.

CLASSIC ULTRA
WHEN ONLY THE BEST WILL DO
Luxury Storage Condos

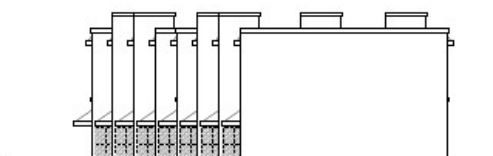
Floor Plan



Elevations



EAST (LEFT) ELEVATION
SCALE 1/8" = 1'-0"



WEST (RIGHT) ELEVATION
SCALE 1/8" = 1'-0"

All information furnished regarding property for sale, rental or financing is from sources deemed reliable, but no warranty or representation is made to the accuracy thereof and same is subject to errors, omissions, change of price, or other conditions prior to sale, lease or financing or withdrawal without notice. No liability of any kind is to be imposed on the broker herein.