

FOR SALE

HIGHLINE

5180 NINTH LINE, MISSISSAUGA, ON

Forward Sale Purpose-Built Rental Opportunity

Colliers

BRANTHAVEN

EXECUTIVE SUMMARY

On behalf of the Vendor, Colliers International (the “Advisor”) is pleased to present 5180 Ninth Line, Mississauga, Ontario, also known as High Line (the “Property”), a unique opportunity to acquire a Purpose-Built Rental asset through a forward purchase structure in a rapidly growing Mississauga market.

The ‘High Line’ purpose-built rental building was designed by BIMstudio Inc. and will be developed by Branthaven Homes, an award-winning Canadian real estate development firm with over 50 years of experience delivering high-quality residential communities across Southern Ontario. Branthaven is widely recognized for its commitment to quality, value, integrity, and pride, and has built a strong reputation as a trusted and sought-after homebuilder through its delivery of single-family homes, townhomes, boutique condominiums, and luxury rental residences.

This contemporary and architecturally striking 12-storey building, comprising 200,464 gross floor area and 208 rental units, is strategically located at Churchill Meadows/Ninth Line Corridor, within a growing urban node that offers strong transit connectivity and proximity to major employment centres, retail amenities, and lifestyle services.

High Line represents a compelling opportunity for investors to address the region’s expanding rental housing shortfall. Upon completion in 2028, this to-be-built trophy asset will serve as a long-term, institutional-quality investment and a multi-generational hold opportunity in one of the GTA’s most dynamic residential corridors.



HIGH LINE OVERVIEW

High Line is a rare forward-sale, purpose-built rental opportunity in one of Mississauga's fastest-growing urban corridors, delivered by Branthaven, an award-winning developer with a proven track record across the GTA. The modern 12-storey building will offer premium finishes and a strong amenity program including a fitness centre, yoga studio, parcel rooms, bike storage, and storage lockers, complemented by landscaped green spaces designed to support long-term tenant appeal.

Strategically located in the Churchill Meadows / Ninth Line Corridor, High Line benefits from excellent connectivity to Highways 401, 403, and 407 and close proximity to major retail destinations such as Erin Mills Ridgeway Plaza and Costco.

Construction is scheduled to commence in late 2026 with completion targeted for 2028, providing investors with a fully entitled, shovel-ready asset in one of Mississauga's most supply-constrained and high-demand rental markets, backed by Branthaven's development expertise.

of Storeys

12

of Units

208

Site Acres

1.61

Parking Ratio

1.10

Total GFA*

200,464 SF

Lockers

208

Efficiency

76.8%

of Parking

229

Total GSA**

154,006 SF

*Gross Floor Area includes areas above grade level and not below grade garage.

**Gross Saleable Area includes suites but does not include common areas, such as lobby, mechanical rooms, amenity area, etc.

HIGH LINE PROPERTY PROFILE

High Line is fully zoned, with Branthaven having completed all required due diligence, including site plan approval. This shovel-ready development offers a prospective purchaser the opportunity to collaborate with the developer to refine the building program, including adjusting the unit mix to achieve an optimal suite allocation.

Slated as a high-rise purpose-built rental tower, this purpose-built rental property will introduce new residential units and modern amenities in a vibrant, transit-rich Mississauga location. Amid a pronounced slowdown in pre-construction condominium sales, purpose-built rental represents the most viable solution to address the growing housing supply gap, offering greater monthly affordability relative to comparable condominium units.

High Line also provides purchasers with the flexibility to acquire a newly constructed, income-producing asset at a customized point in the lease-up cycle. Through the offering process, a purchaser may propose the desired stage and percentage of lease-up at closing, enabling strategic collaboration with the builder to optimize rental performance, either jointly or through the purchaser's own management and leasing platform.



Unit Mix

Bachelor x 6 units (413 SF) | \$1,600/month
1 Bedroom x 61 units (544 SF) | \$2,100/month
1 Bedroom + Den x 18 units (698 SF) | \$2,300/month
2 Bedroom x 100 units (797 SF) | \$2,600/month
2 Bedroom + Den x 10 units (1,048 SF) | \$2,900/month
3 Bedroom x 13 units (1,200 SF) | \$3,200/month



Parking

208 Surface and Underground | 21 Visitor Parking



Storage Lockers

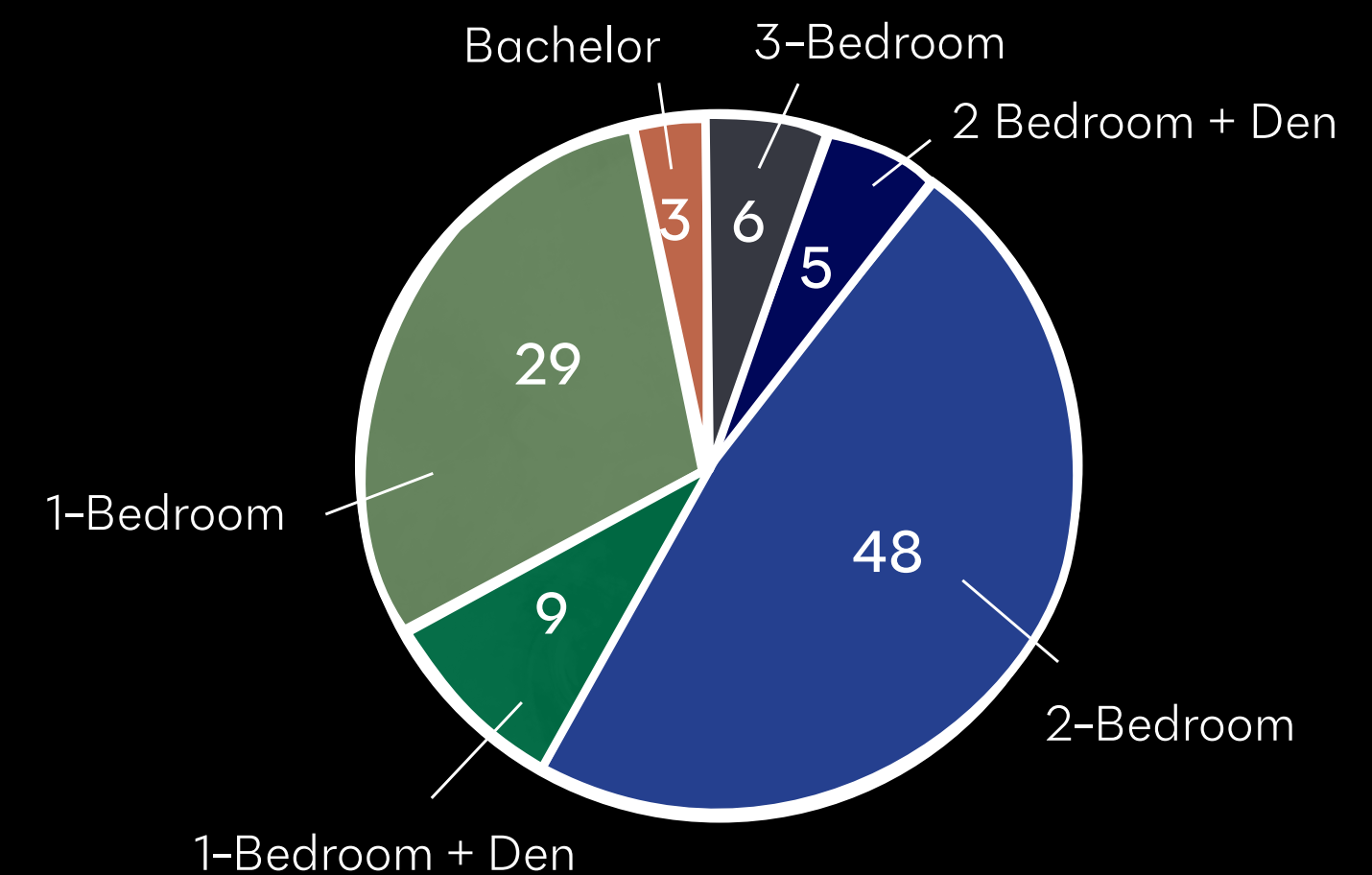
208 Storage Lockers | \$7,800/month



Additional Income Generation

Parking Fee: \$120/month | Storage Income: \$50/month | Tele/Cable/Meter: \$50/month

Suite Breakdown



ABOUT THE BUILDER

Branthaven Homes

BRANTHAVEN

PROUDLY CANADIAN SINCE 1971

For over 50 years, Branthaven has developed and delivered a broad portfolio of quality single-family homes, master-planned communities, classic and contemporary townhomes, boutique condos and luxury rental residences. Branthaven has earned a reputation as an award-winning, trusted brand, and a sought-after home builder across Southern Ontario.

Quality, Value, Integrity and Pride.

These pillars form the very foundation of our customer experience and our industry-wide reputation for homebuilding excellence. Branthaven will continue to bring exceptional talent, leadership and dedication to every community and provide our homebuyers with “The Best Built Home at Any Price”.

BRANTHAVEN.COM



THE GREENWICH



UPPER WEST SIDE 2 SUITE



UPPER WEST SIDE 2

Notable Branthaven Projects

COMPLETED HIGH-RISE PROJECTS

- Upper West Side – Oakville | 266 Units
- Upper West Side 2 – Oakville | 356 Units
- The Greenwich – Oakville | 349 Units
- The Taunton – Oakville | 286 Units (Purchased by Realstar in 2019)
- The Camby – Cambridge | 284 Units (Purchased by BentallGreenOak in 2025)

OTHER PROJECTS

- Millcroft Towns
A townhouse community completed in 2024-2025
- Queens Lane
Completed in 2025, is a Branthaven community in Brampton that offers a finished neighbourhood setting framed by mature, established vegetation
- Classic Drive
Award-winning community recognized for design in 2025



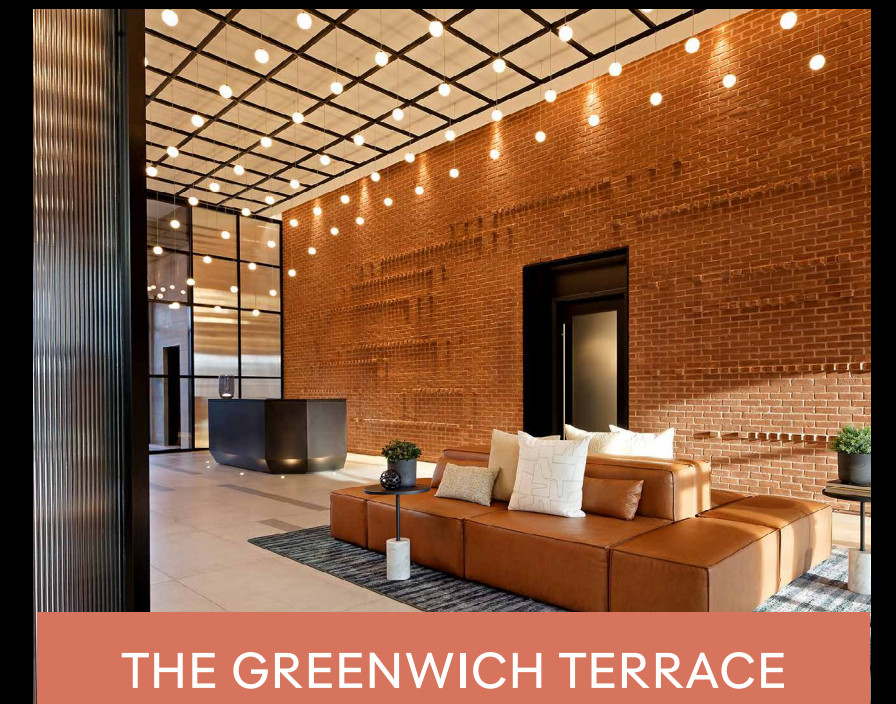
UPPER WEST SIDE 2 AMENITY AREA



UPPER WEST SIDE



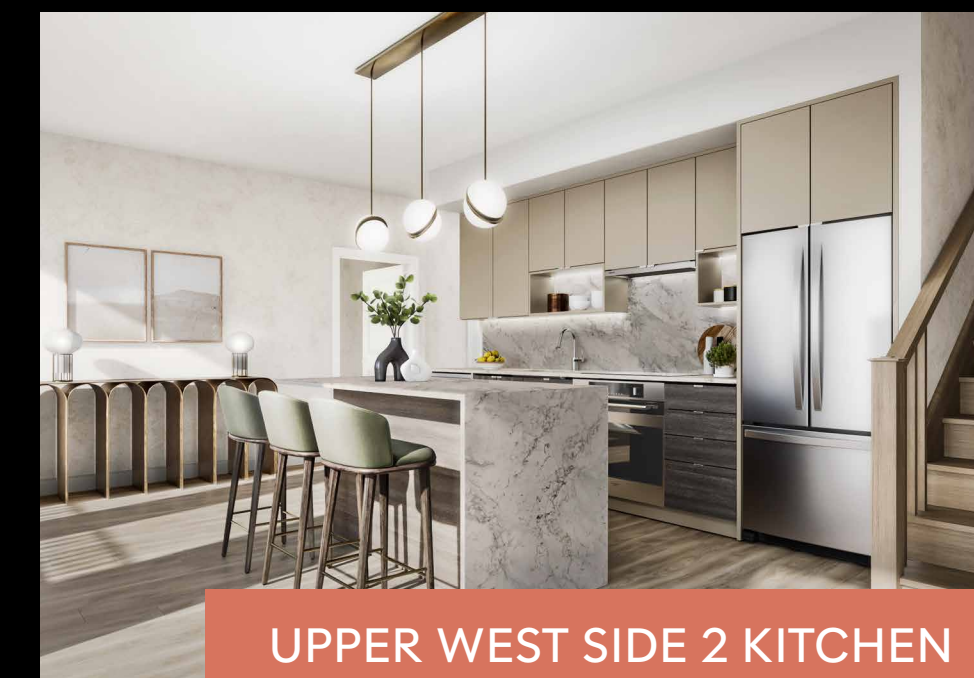
THE GREENWICH TERRACE



THE GREENWICH TERRACE



THE TAUNTON



UPPER WEST SIDE 2 KITCHEN

DEVELOPMENT **TIMELINE**

SHOVEL IN GROUND

December 2026

- Shoring
 - Begin drilling shoring wall piles followed by lagging as parking garage excavation progresses.
- Excavation
 - Bulk excavation of underground parking structure proceeds to garage and footing subgrade levels.

SUPER STRUCTURE & BUILDING ENVELOPE

June 2027

- Pre-cast Concrete Structure
 - Begin erection of precast above grade structure to roof.
 - Installation of precast exterior walls and windows.

FINISHING & COMPLETION (EARLY STAGES)

December 2027

- Finishing
 - Starting drywall of suites followed by taping, painting, doors and trim, tiles, etc.
- Top Off
 - Building structure is completed.
 - Starting roofing and sealing of the building (water tight)
 - Begin construction of elevator
 - Begin exterior site works
 - Begin garage waterproofing

FLOOR COMPLETIONS

May 2028

- Quality Assurance
 - Conducting quality inspections of suites and completing deficiency remediation work.
- Common Area and Amenity Completion
 - Completing Residential Corridors, Ground Floor Amenities and Garage space line painting and lockers.

HANDOVER

September 2028

- Leasing and Handover
 - Begin handing over floors for leasing.

SITE PREPARATION

November 2026

- Mobilization
 - Mobilize Construction Team and prep site.

FOUNDATION WALLS

March 2027

- Forming
 - Erect the tower crane(s).
 - Begin footing construction followed by foundation walls.

STRUCTURAL FRAMEWORK

October 2027

- Framing
 - Begin framing and closing exterior and demising walls followed by interior framing and rough-in (HVAC, Plumbing, Electrical, Life Safety, Sprinklers) of Suites and Amenities.

FINISHING & COMPLETION (LATE STAGES)

February 2028

- Finishing
 - Starting kitchens, flooring, mechanical and electrical finishes, appliances, etc.

OCCUPANCY

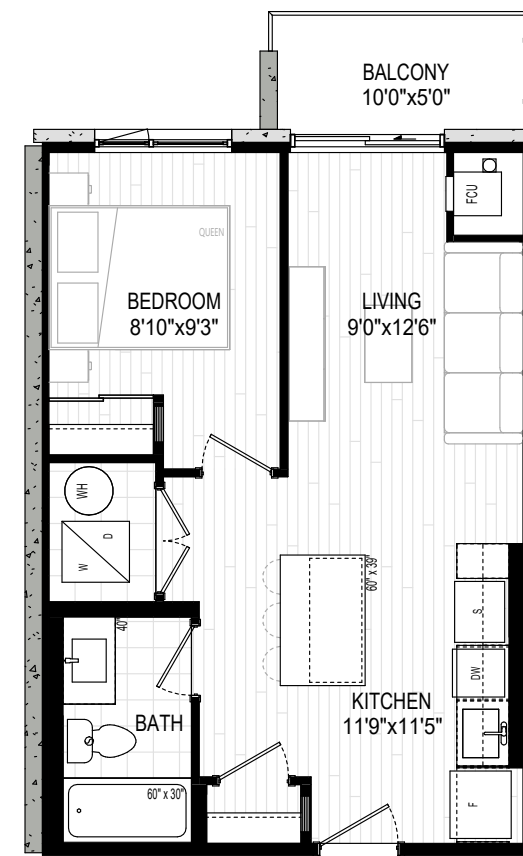
July 2028

- Municipal Occupancy
 - Conducting building inspections with building officials and obtaining occupancy permits.

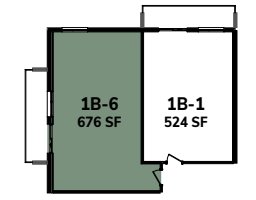
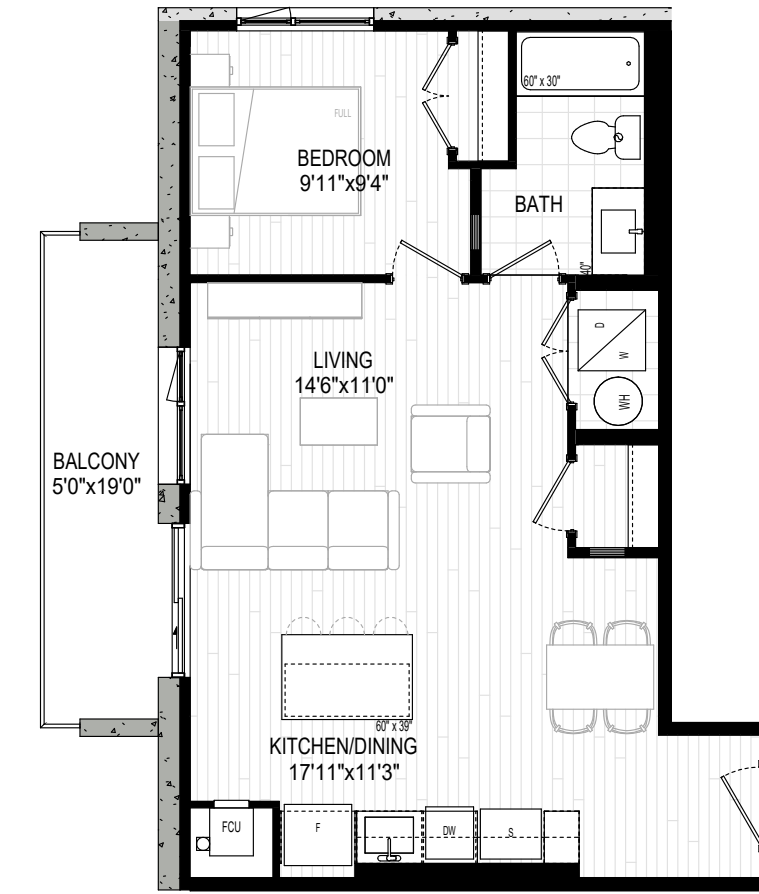
SAMPLE 1-BEDROOM FLOOR PLANS

Highly Efficient Floor Plans

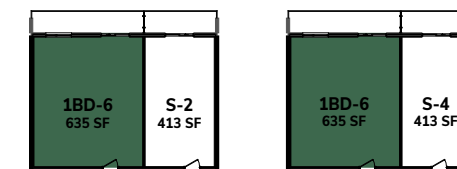
1 Bedroom | 524 SF



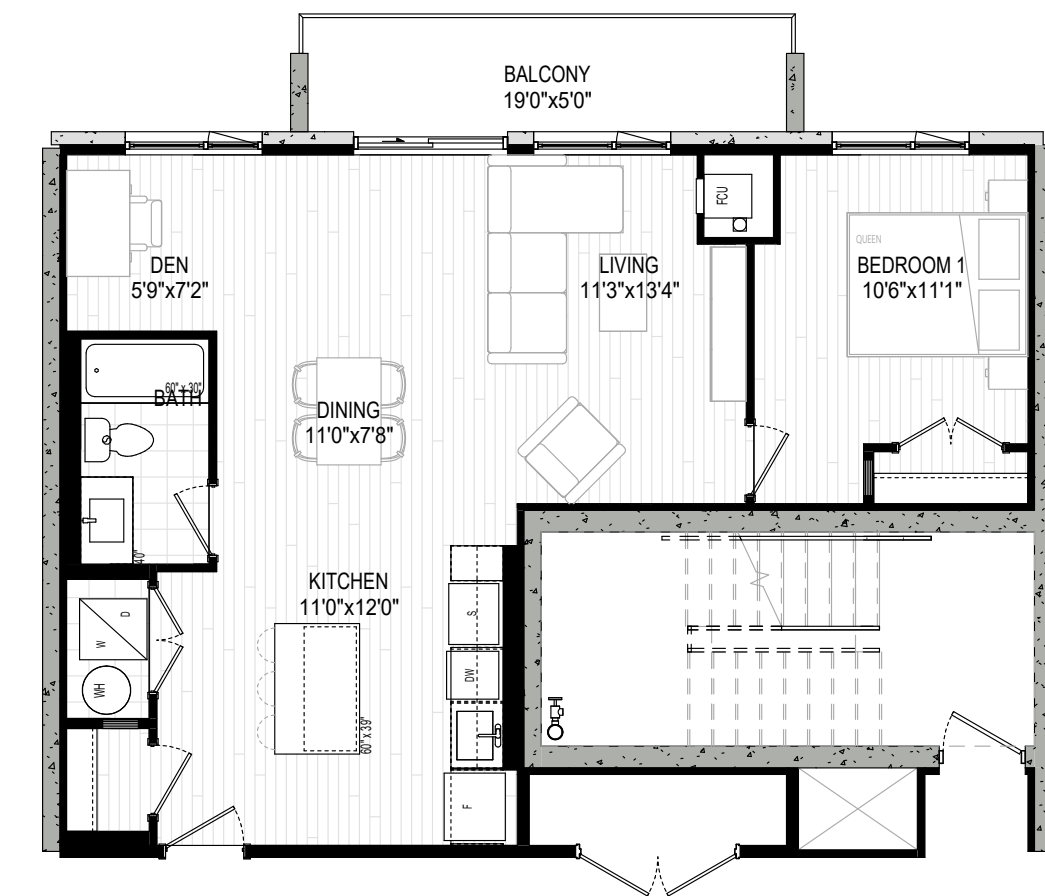
1 Bedroom | 676 SF



1 Bedroom + Den | 635 SF



1 Bedroom + Den | 662 SF

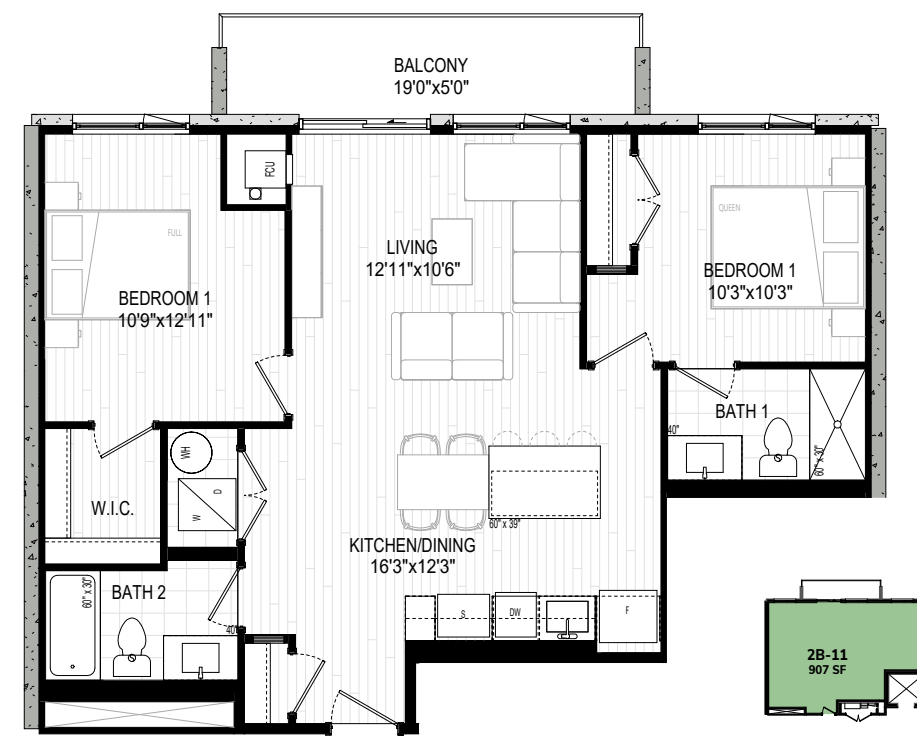


*Approximate dimensions only, subject to change without notice.

SAMPLE 2-BEDROOM FLOOR PLANS

Highly Efficient Floor Plans

2 Bedroom | 904 SF



2 Bedroom | 937 SF



2 Bedroom | 1,048 SF



2 Bedroom | 1,059 SF



2 Bedroom + Den | 1,048 SF

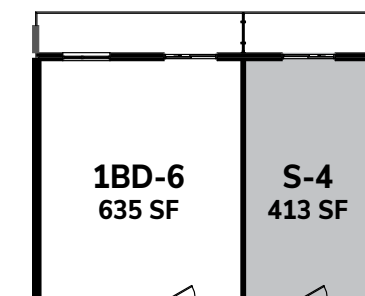


*Approximate dimensions only, subject to change without notice

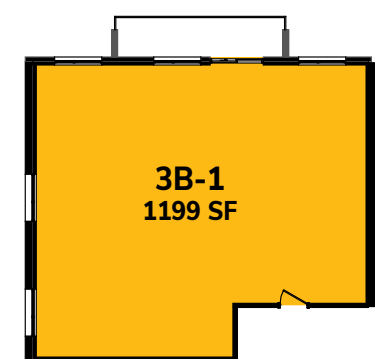
SAMPLE STUDIO & 3-BEDROOM FLOOR PLANS

Highly Efficient Floor Plans

Studio | 413 SF



3 Bedroom | 1,199 SF



*Approximate dimensions only, subject to change without notice

LOCATION OVERVIEW

Mississauga, ON

Mississauga is Ontario's third-largest city and one of Canada's most important suburban business hubs. Located immediately west of Toronto, it forms a key part of the Greater Toronto Area (GTA) and benefits from direct access to major highways (401, 403, 407, QEW), regional transit, and Pearson International Airport. The city has evolved from a commuter suburb into a complete urban centre with major employment districts, a growing downtown core, and established residential communities. Mississauga's economy is highly diversified, anchored by advanced manufacturing, life sciences, logistics, technology, and professional services. It is home to more than 90,000 businesses and over 1,400 multinational companies, creating a strong local employment base that supports long-term housing demand. Cultural amenities, waterfront districts such as Port Credit, and major retail nodes like Square One contribute to its appeal as a live-work-play city.

Population Growth and Immigration

Mississauga continues to absorb a significant share of GTA population growth, supported by international immigration and internal migration from Toronto.

Transit-Oriented Growth

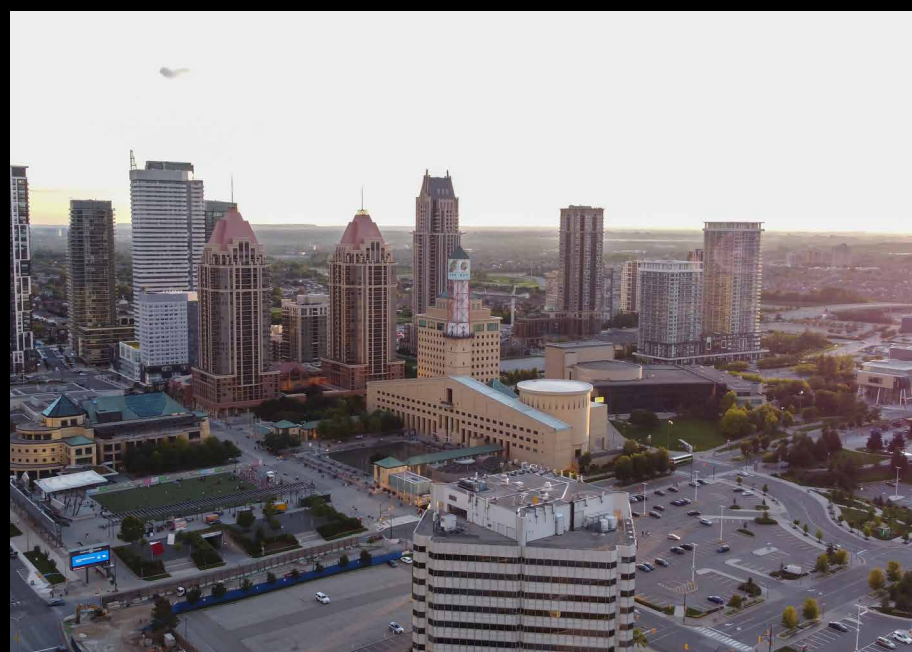
Ongoing transit expansion and urban intensification around key corridors and the city centre are driving higher-density residential development. These areas are positioned to benefit from rising land values and increasing population density over time.

Economic Diversity and Job Growth

Unlike single-industry markets, Mississauga benefits from a broad mix of sectors including aerospace, pharmaceuticals, finance, and logistics. This diversification reduces economic volatility and supports long-term real estate stability.

Infrastructure and Quality of Life

Major road networks, proximity to Pearson Airport, waterfront amenities, and a growing cultural and retail scene attract locals and visitors alike. The city's strong municipal planning framework and investment in public services further strengthen its long-term outlook.



AREA DEMOGRAPHICS

Total Population (2025)



638,924

Projected 2030 Population



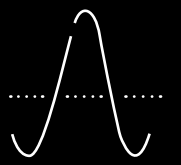
654,605

Average Household Income



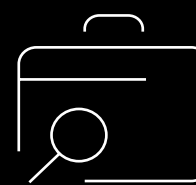
\$166,245

Median Age



37.8

Employment Rate



92.7%

*Within 10 KM of the Property



NEW AND IMPROVED NINTH LINE

This is the last remaining greenfield land in Mississauga.

914 acres (350 hectares).

Highline will contribute 208 units to the forecasted total of 3,550 units for the Ninth Line Neighborhood.

This represents 5% of the City's housing target for the area and marks the neighborhood's first high-rise building.

This project will generate:

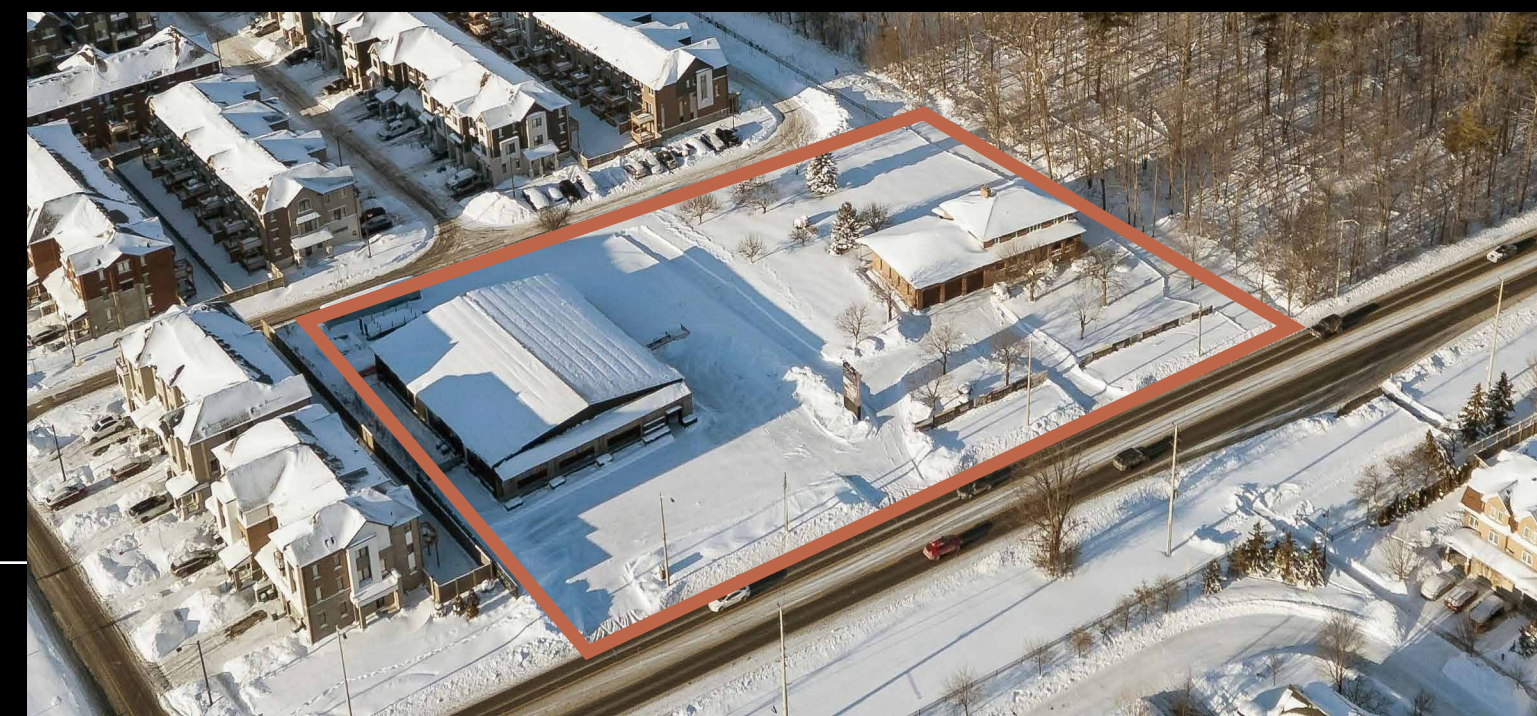
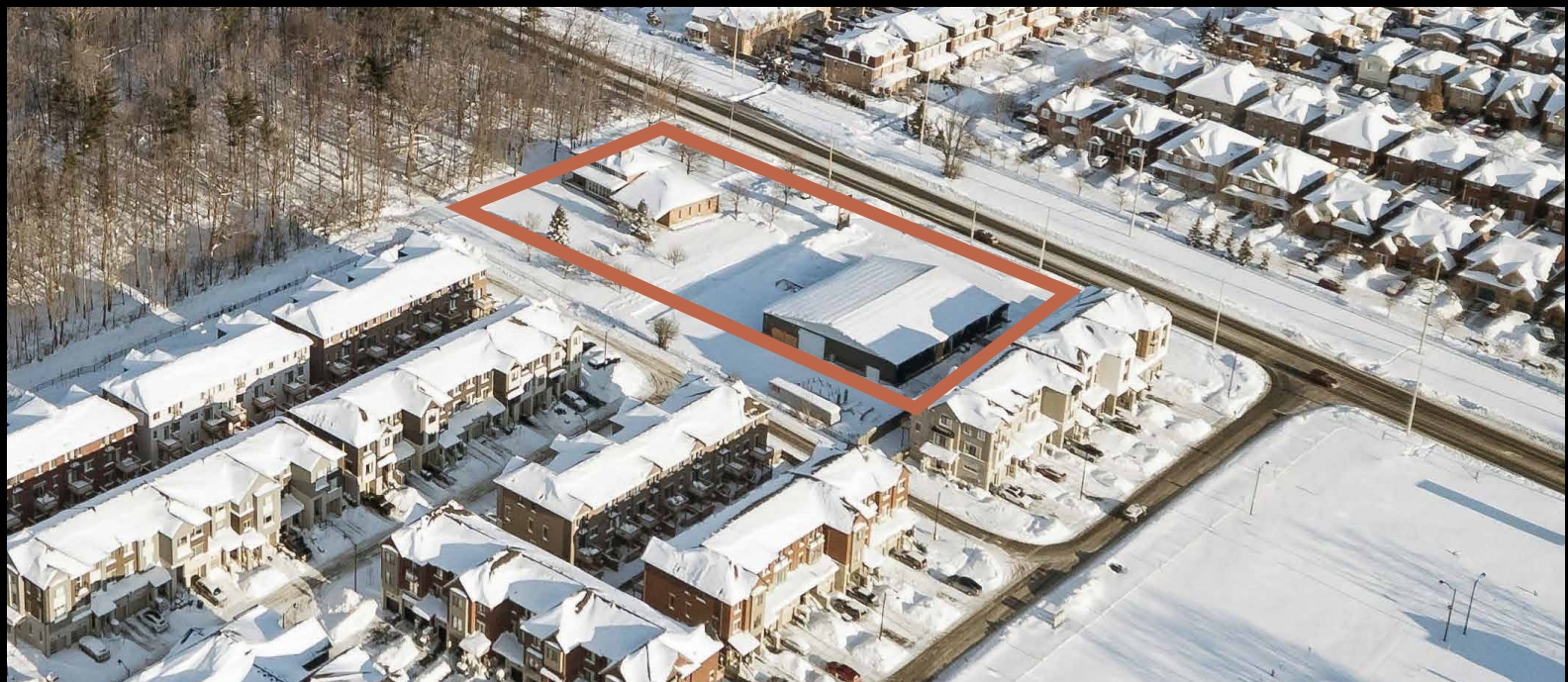
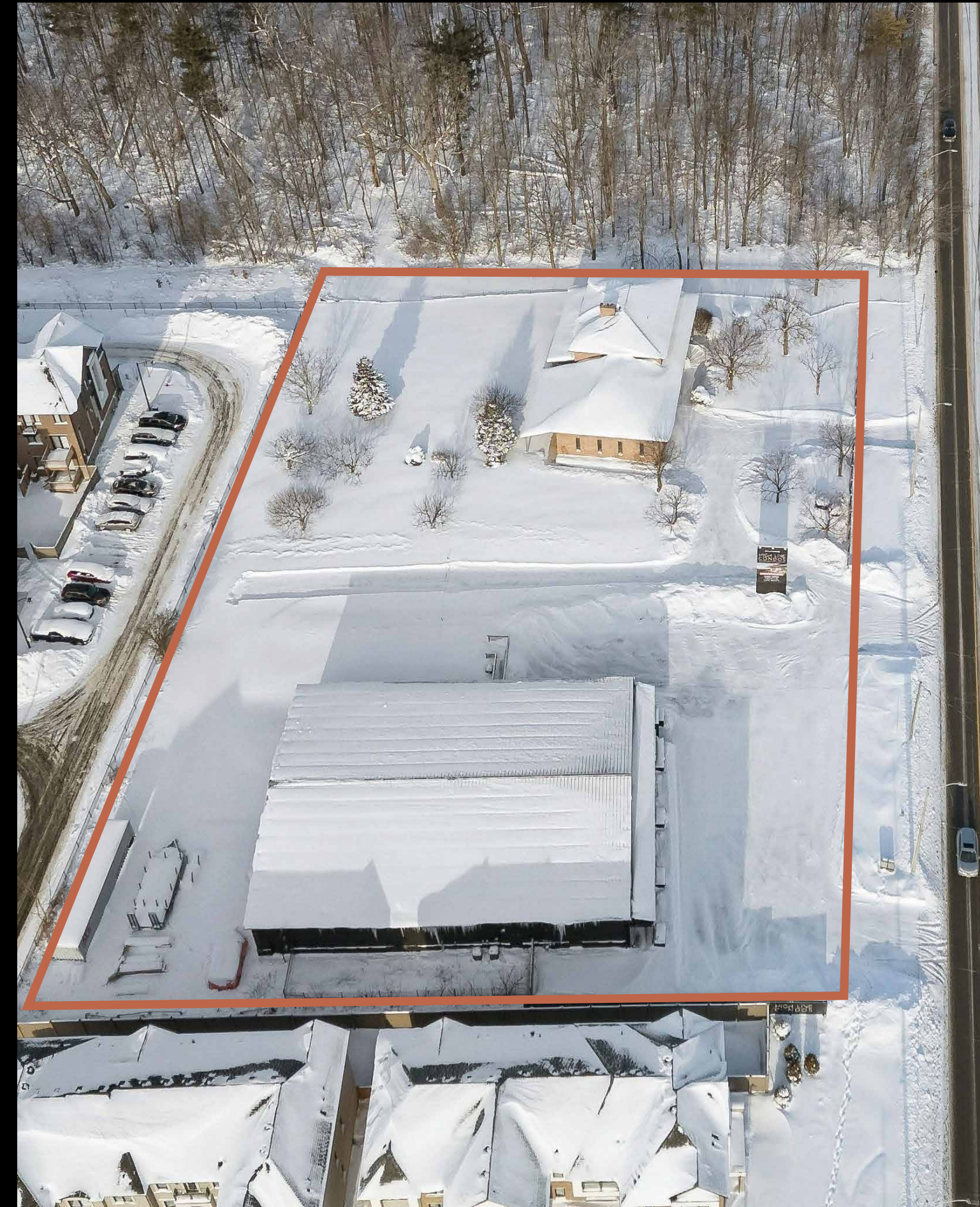
+8,500 people

+500 jobs

Legend

- Proposed Land Use - Employment
- Proposed Land Use - Transitway Station
- Proposed Land Use - Transitway
- Proposed Land Use - Residential
- Proposed Land Use - Public Open Space
- Proposed Land Use - Greenlands
- Proposed Land Use - Parkway Belt West
- Ninth Line Lands Boundary





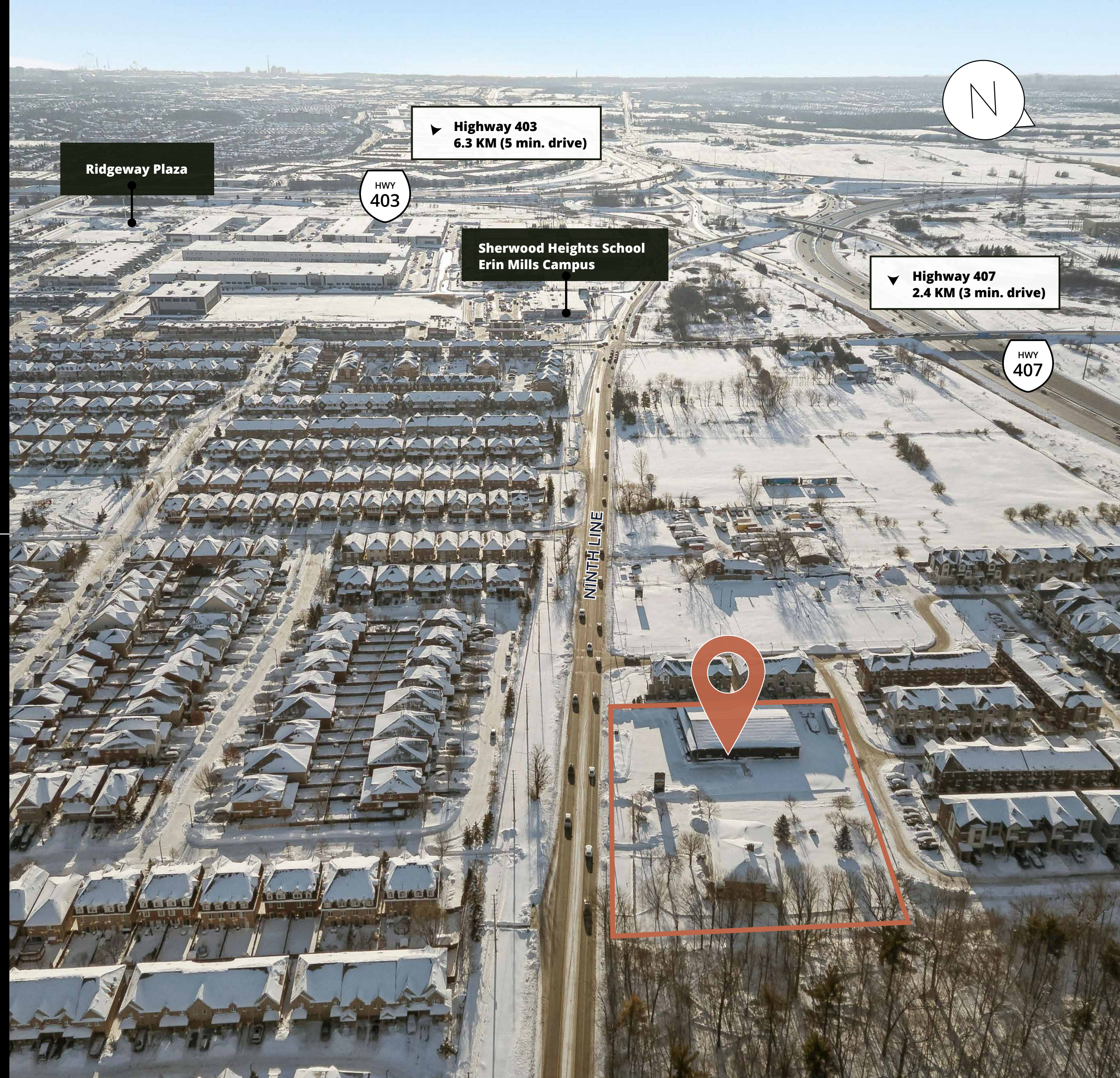
SITE AERIALS

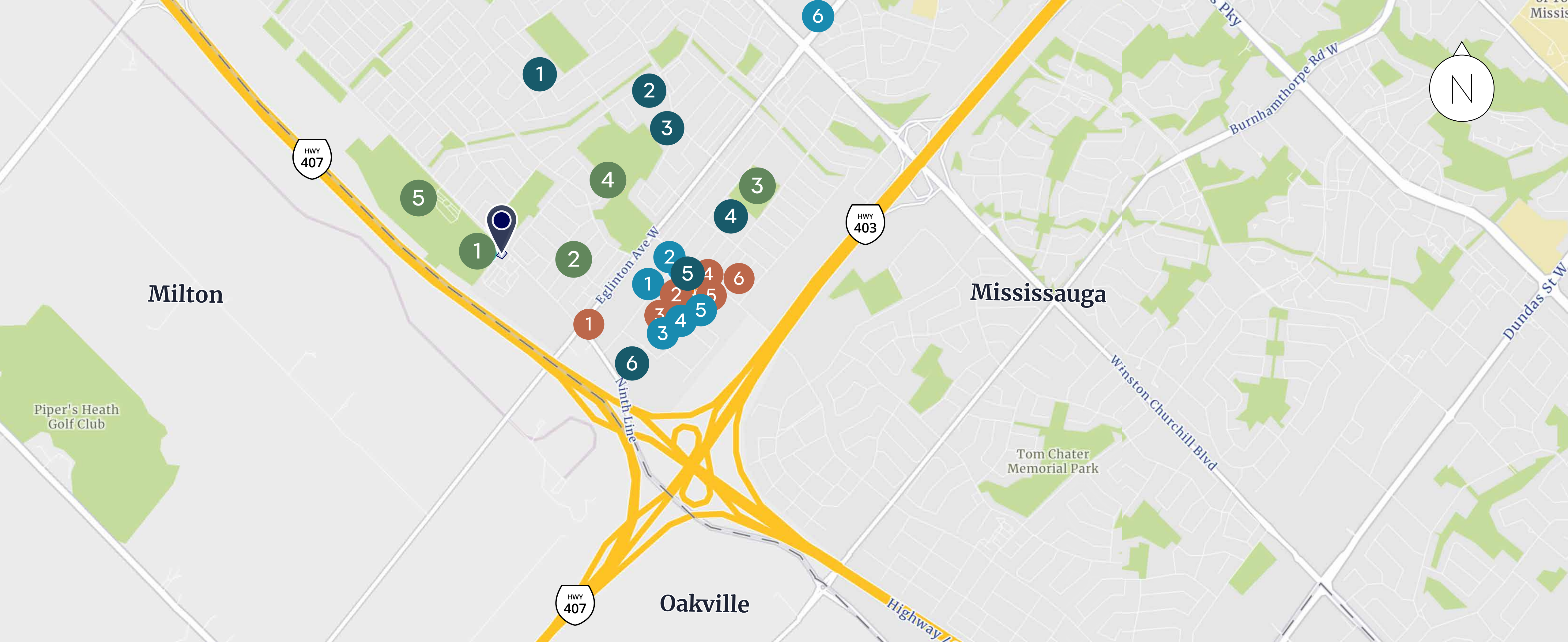
MINUTES AWAY TO ENDLESS AMENITIES

5180 Ninth Line is ideally situated near a wide range of everyday conveniences and lifestyle amenities.

Residents will enjoy easy access to major shopping destinations including Erin Mills Ridgeway Plaza, Erin Mills Town Centre, and nearby big-box retailers such as Costco, Loblaws, and Sobeys. Recreational options are abundant with the Churchill Meadows Community Centre and pool, multiple sports and soccer fields, golf courses, trails, arenas, and seven nearby parks, as well as the scenic Erin Centre Trail and Osprey Marsh Conservation Area.

Essential services are also close at hand, with Credit Valley Hospital, medical centres, and dental clinics all located nearby, making 5180 Ninth Line a well-connected and highly livable location.





NEARBY AMENITIES

FOOD & DRINKS

- 1 Tim Hortons
- 2 The Dough Story
- 3 Sun Chinese Cuisine
- 4 Aseer Time | Subway
- 5 Jabal Coffee Time
- 6 Kafani Sweets & Coffee

RETAIL/ GROCERY

- 1 Ridgeway Plaza / Apna Farm
- 2 Rayhana Organics
- 3 Aljohara Market Convenience
- 4 Al-Basaam Roastery
- 5 ONTARIO CASH+CARRY
- 6 Erin Mills Town Centre

PARKS & REC

- 1 Churchill Meadows Dog Park
- 2 McLeod Park
- 3 Aquinas Park
- 4 Marco Muzzo Memorial Woods and Park
- 5 Churchill Meadows Community Centre and Mattamy Sports Park





SCHOOLS

- 1 St. Bernard of Clairvaux Secondary
- 2 Erin Centre Middle School
- 3 Oscar Peterson Public School
- 4 St. Sebastian Catholic Elementary School
- 5 Baig Academy
- 6 Sherwood Heights School - Erin Mills Campus

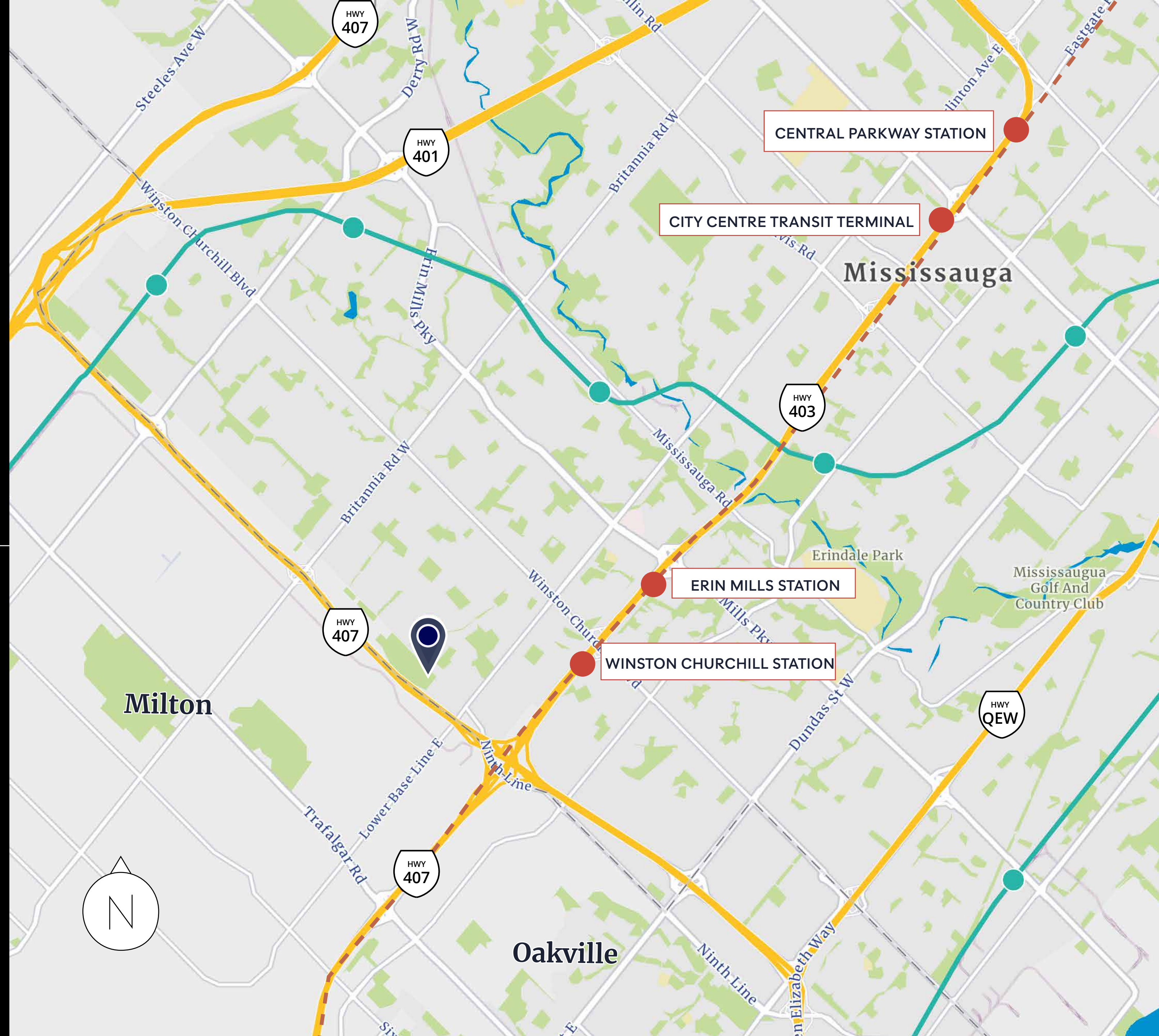
CONNECTIONS AT YOUR DOORSTEP

High Line provides unparalleled access to Mississauga's major transit arterials.

Transit Legend

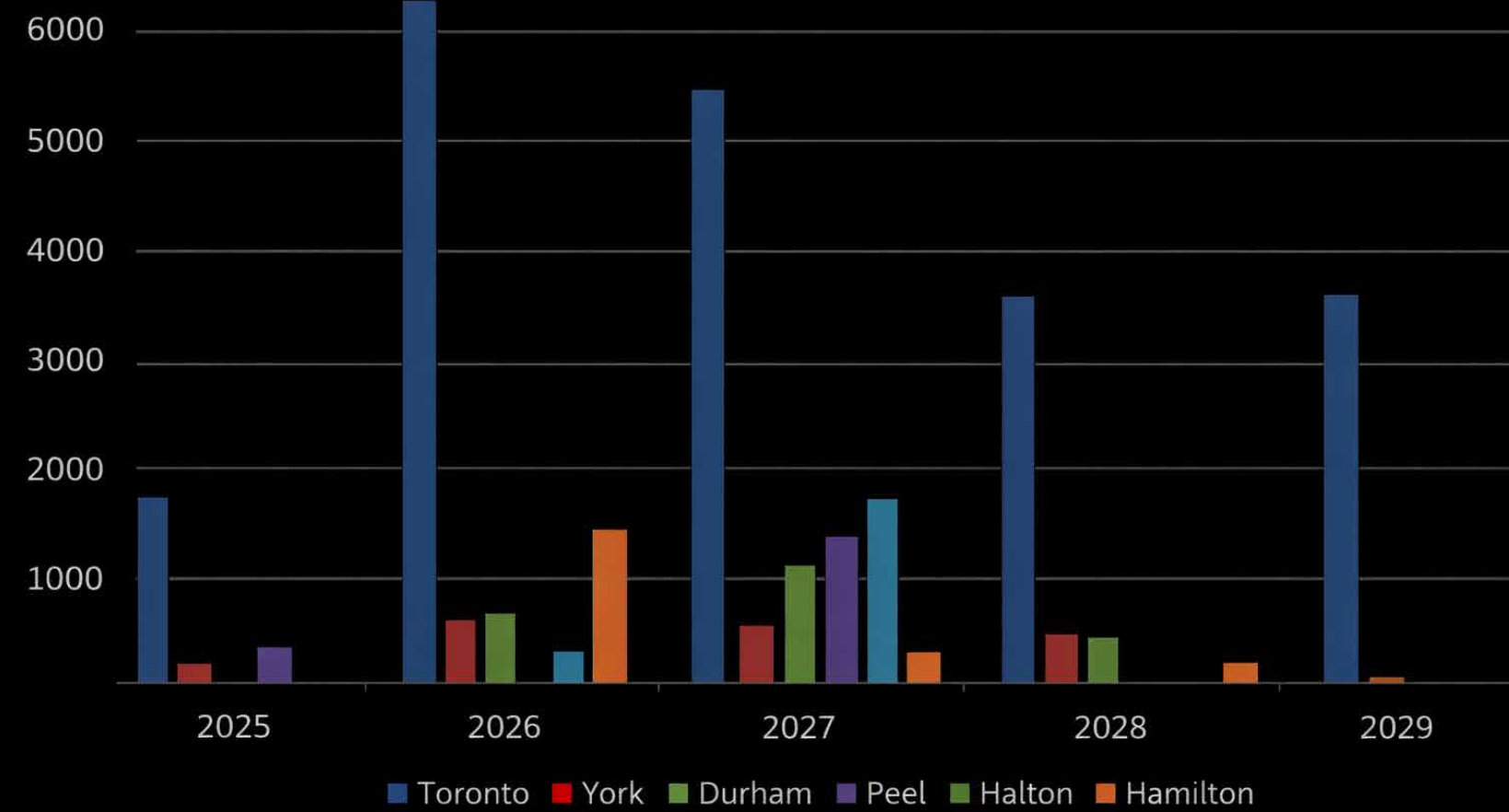
-  Dundas BRT Line Station
-  Dundas BRT Line
-  GO Transit Line
-  GO Transit Station

*BRT = Bus Rapid Transit



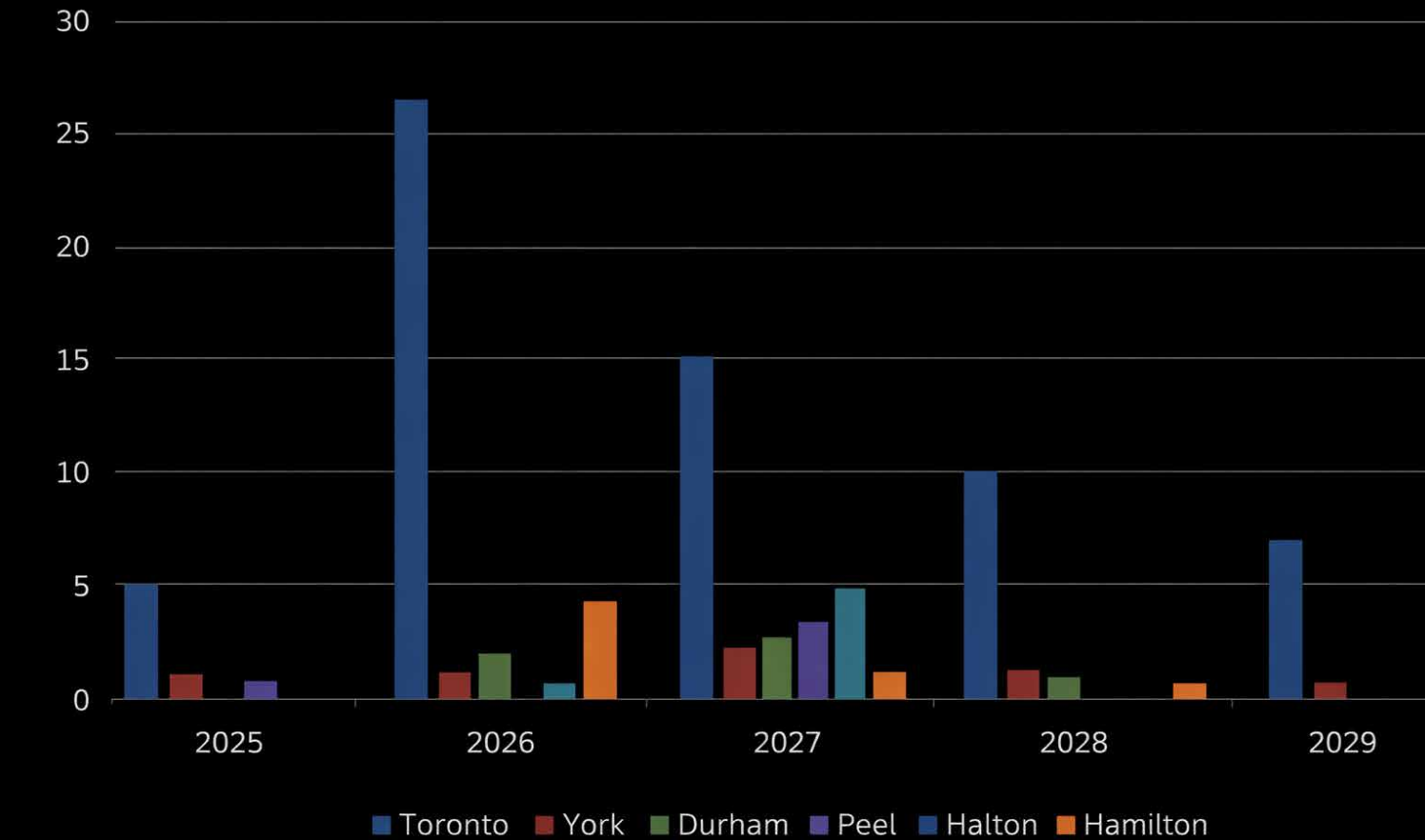
MARKET OVERVIEW

Units Completed By Region



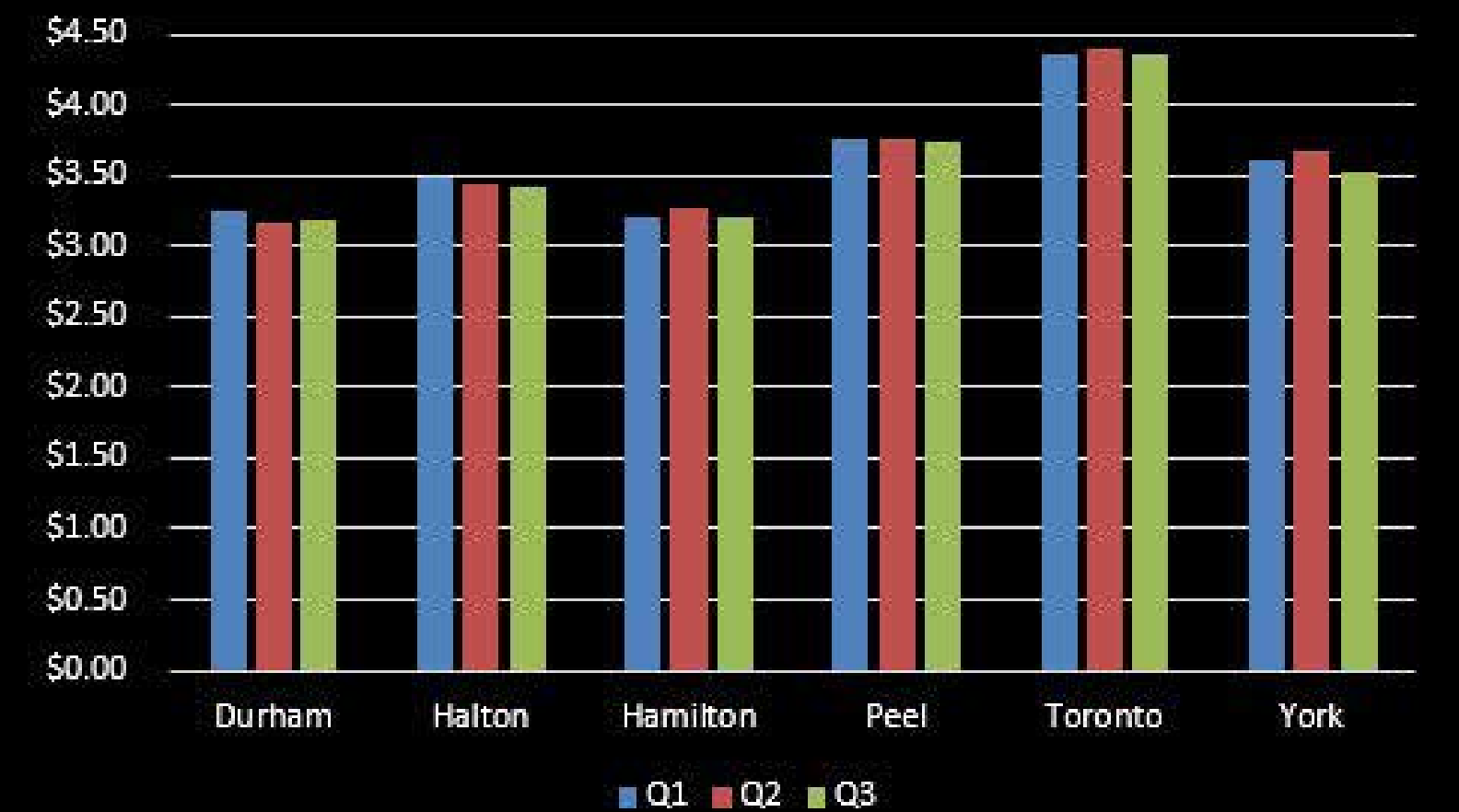
	2025	2026	2027	2028	2029
Toronto	1,640	5,917	5,138	2,889	3,252
York	42	534	317	388	0
Durham	0	584	650	380	0
Peel	331	0	861	0	0
Halton	0	148	1,287	0	0
Hamilton	0	1,269	195	116	0
Total	2,013	8,452	8,448	3,773	3,252

Completed Purpose-Built Rental Buildings by Region



	2025	2026	2027	2028	2029
Toronto	5	24	14	10	6
York	1	1	2	1	0
Durham	0	3	3	1	0
Peel	1	0	3	0	0
Halton	0	1	5	0	0
Hamilton	0	5	2	1	0

Average Rental Rates on Completed Purpose-Built Rentals By Region in 2025*



	Durham	Halton	Hamilton	Peel	Toronto	York
Q1	\$2,513.00	\$3,045.00	\$2,545.00	\$2,746.00	\$3,052.00	\$2,623.00
Q2	\$2,461.00	\$3,021.00	\$2,596.00	\$2,740.00	\$3,078.50	\$2,593.00
Q3	\$2,375.00	\$3,000.00	\$2,443.00	\$2,682.00	\$3,073.00	\$2,551.50

*Statistics from Urbanation.
Rents above are a blend of 1-bedroom and 2-bedroom units.
Q4 2025 stats are not available at this time.

MARKET OVERVIEW

Significant Purpose-Built Rental Sales after 2019

Transaction Date	Address	Price	Size (# of units)	Price/unit	Construction Year
9/29/2025	740 Dupont Street, Old Toronto	\$152,400,000	210	\$725,714	2021
11/5/2024	1475 Whites Road, Pickering	\$127,101,081	227	\$559,917	2024
1/17/2024	3385 Dundas Street West, Old Toronto	\$88,000,000	131	\$671,756	2021
9/29/2021	22 John Street, York	\$169,425,000	369	\$459,146	2019
9/2/2021	1287 Costigan Road, Milton	\$62,550,000	105	\$595,714	2021
12/5/2019	2333 Taunton Road, Oakville	\$164,000,000	286	\$573,427	2019
6/3/2019	772 Paisley Road, Guelph	\$52,700,000	161	\$327,329	2019

PRO-FORMA

Capital Expenditures	Year 1	Year 2	Year 3	Year 4	Year 5	Year 6	Year 7	Year 8	Year 9	Year 10	
Leasing Commission - Residential	\$(5,840)	\$(10,992)	\$(15,597)	\$(20,028)	\$(24,303)	\$(28,437)	\$(32,448)	\$(36,348)	\$(40,151)	\$(43,870)	
Capital Reserve	\$(101,920)	\$(101,920)	\$(101,920)	\$(101,920)	\$(101,920)	\$(101,920)	\$(101,920)	\$(101,920)	\$(101,920)	\$(101,920)	
Total Capital Expenditure	\$(107,760)	\$(112,912)	\$(117,517)	\$(121,948)	\$(126,223)	\$(130,357)	\$(134,368)	\$(138,268)	\$(142,071)	\$(145,790)	
Cash Flow from Operations	\$4,704,723	\$4,843,946	\$4,988,046	\$5,136,782	\$5,290,269	\$5,448,629	\$5,611,989	\$5,780,480	\$5,954,239	\$6,133,409	
Acquisition & Sales Info	Acquisition									Year 10	
Purchase Price	\$(113,250,000)							Sales		\$152,178,232	
Acquisition Closing Cost	\$(1,132,500)							Sales Closing Cost		\$(3,043,565)	
	Acquisition	Year 1	Year 2	Year 3	Year 4	Year 5	Year 6	Year 7	Year 8	Year 9	Year 10
Unlevered Net Cash Flow	\$(114,382,500)	\$4,704,723	\$4,843,946	\$4,988,046	\$5,136,782	\$5,290,269	\$5,448,629	\$5,611,989	\$5,780,480	\$5,954,239	\$155,268,076
Unlevered IRR	6.98%		Unlevered Equity Multiple		1.77x						
Acquisition Loan Info	Acquisition	Year 1	Year 2	Year 3	Year 4	Year 5	Year 6	Year 7	Year 8	Year 9	Year 10
Debt Funding	\$84,937,500										
Closing Cost	\$(424,688)										
Interest Payment		\$(3,524,121)	\$(3,496,259)	\$(3,467,214)	\$(3,436,937)	\$(3,405,375)	\$(3,372,473)	\$(3,338,175)	\$(3,302,421)	\$(3,265,150)	\$(3,226,297)
Amortization		\$(656,489)	\$(684,351)	\$(713,396)	\$(743,673)	\$(775,235)	\$(808,137)	\$(842,435)	\$(878,189)	\$(915,460)	\$(954,313)
Loan Repayment											\$(76,965,822)
	Acquisition	Year 1	Year 2	Year 3	Year 4	Year 5	Year 6	Year 7	Year 8	Year 9	Year 10
Levered Net Cash Flow	\$(29,869,688)	\$524,113	\$663,336	\$807,436	\$956,172	\$1,109,659	\$1,268,019	\$1,431,379	\$1,599,870	\$1,773,629	\$74,121,644
Levered IRR	11.87%		Levered Equity Multiple		2.82x						
		Year 1	Year 2	Year 3	Year 4	Year 5	Year 6	Year 7	Year 8	Year 9	Year 10
DSCR		1.15	1.19	1.22	1.26	1.30	1.33	1.37	1.42	1.46	1.50
Cash on Cash (Operating Only)		1.75%	2.22%	2.70%	3.20%	3.72%	4.25%	4.79%	5.36%	5.94%	6.54%

OFFERING PROCESS

This Confidential Information Memorandum (“CIM”) is being delivered to prospective Purchasers to assist them in deciding whether they wish to acquire the Property. This CIM does not purport to be all inclusive or to contain all the information that a prospective Purchaser may require in deciding whether or not to purchase the Property.

This CIM is for information and discussion purposes only and does not constitute an offer to sell or the solicitation of any offer to buy the Property. This CIM provides selective information relating to certain physical, locational and financial characteristics of the Property. The information on which this CIM is based has been obtained from various sources considered reliable.

Neither the Vendor nor Colliers make any representations, declarations or warranties, express or implied, as to the accuracy or completeness of the information or statements contained herein or otherwise and such information or statements

should not be relied upon by prospective Purchasers without independent investigation and verification. The Vendor and Colliers expressly disclaim any and all liability for any errors or omissions in this CIM or any other written or oral communication transmitted or made available to prospective Purchasers. Prospective Purchasers should conduct their own independent investigation and verification of the information provided herein, and should seek legal, accounting, tax and engineering advice as necessary.

If any information relating to the Property, in addition to the information provided in this CIM, is provided at any time, orally or otherwise, by the Vendor or Colliers or anyone acting on their behalf, such information is provided as a convenience only without representation or warranty as to its accuracy or completeness and such information should not be relied upon by prospective Purchasers without their own independent investigation and verification.

Confidentiality

By accepting this CIM, prospective Purchasers agree to hold and treat this CIM and its contents in the strictest confidence. Prospective Purchasers will not, directly or indirectly, disclose or communicate or permit anyone else to disclose or communicate this CIM or any of its contents or any part thereof to any person, firm or entity without the prior written consent of the Vendor and Colliers. Prospective Purchasers will not use or permit this CIM to be used in any manner detrimental to the interests of the Vendor or Colliers or their affiliates or for any purpose other than a proposed purchase of the Property.

The recipient of this CIM agrees to provide Colliers with a list of those persons to whom this CIM or any information contained herein is provided. The terms and conditions in this section with respect to confidentiality and

the disclaimer contained under the heading “Memorandum Contents” apply to all sections of the CIM as if stated independently therein.

Property Inspection

In no event shall any prospective Purchaser or any of its agents or contractors contact any governmental authorities concerning the Property, or make any physical inspection or testing of the Property, without the prior written consent of the Vendor.

Process

Neither the Vendor nor Colliers make any representation or warranty, or any agreement whatsoever, that the Vendor will accept any of the offers or any agreements of purchase and sale, before or after negotiations, which may be extensive. Neither the Vendor nor Colliers shall compensate any participant for any costs incurred in its participation in the process.

Data Room Material

A data room has been set up for this transaction. Prospective Purchasers are strongly encouraged to access the data room in order to make their offers as unconditional as possible. Information contained in the data room will include items such as this CIM, architectural drawings, studies/reports pertaining to the site plan approval. Colliers has made data room material available online at Colliers Sharefile; access is restricted to those who have executed a Confidentiality Agreement (CA) and have been issued a user login and password.

Offering Guidelines

Interested parties are invited to submit a Letter of Intent (“LOI”) for the Property through the Agent for consideration by the Vendor. The LOI should outline the terms for the purchase of the Property and should include, at minimum, the following information and items:

Purchase Price

Name of the ultimate beneficial owners of the Purchaser, including their respective percentage interests;

- Evidence of the Purchaser’s financial ability to complete the transaction;
- Confirmation that the Property will be purchased on an “as is, where is” basis;
- Terms and conditions of closing, including a schedule of timing and events to complete the transaction;
- An address, email address and fax number for the delivery of notices to the Purchaser;

The Vendor reserves the right to remove the Property from the market and to alter the offering process described above and timing thereof, at its sole discretion. Offers should be directed to:

Colliers International
181 Bay Street, Suite 1400
Toronto, ON M5J 2V1
Attention: Alexander Silver

Review of Offers

Offers to purchase will be evaluated based upon, but not limited to, the structure proposed by the prospective Purchaser, the net proceeds to the Vendor, the prospective Purchaser’s ability to complete the transaction, the timelines and proposed closing conditions. The Vendor is not obliged to accept any offer and reserves the right to reject any or all offers received.

Sale Conditions

The Property and any fixtures, chattels and equipment included with the Property are to be purchased on an “as is, where is” basis. There is no warranty, expressed or implied, as to title, description, condition, cost, size, quantity or quality thereof.

Alexander Silver*

Associate Vice President

Alexander.Silver@colliers.com

+1 905 334 9417

Jeremiah Shames*

Executive Vice President

Jeremiah.Shames@colliers.com

+1 647 884 5449

COLLIERSCANADA.COM

This document has been prepared by Colliers for advertising and general information only. Colliers makes no guarantees, representations or warranties of any kind, expressed or implied, regarding the information including, but not limited to, warranties of content, accuracy and reliability. Any interested party should undertake their own inquiries as to the accuracy of the information. Colliers excludes unequivocally all inferred or implied terms, conditions and warranties arising out of this document and excludes all liability for loss and damages arising there from. This publication is the copyrighted property of Colliers and/or its licensor(s). Copyright © 2026. All rights reserved. This communication is not intended to cause or induce breach of an existing listing agreement. Colliers Macaulay Nicolls Inc., Brokerage. *Sales Representative



BRANTHAVEN