

FOR SUBLEASE

564 PACIFIC AVENUE

*±11,000 SF Ground Floor Sublease
Available Now*

564 PACIFIC AVE, SAN FRANCISCO, CA



KIDDER.COM

km Kidder
Mathews

Boasting high-end finishes and a prime location in Jackson Square, 564 Pacific is an exceptional choice for employers seeking a top-tier flexible workspace.

±11,000 RSF

Sublease through 1.31.29

Some furniture available

Available Now

OFFICE AVAILABILITY

BUILDING 564

±11,000 SF

Take Tour 

MARC TROVATO

415.229.8914

marc.trovato@kidder.com

LIC N° 01263606



HIGHLY- ACCESSIBLE LOCATION

Short walking distance to well-known restaurants including Cotogna, Quince, Bix, Kokarri, Verjus, as well as the private club, The Battery

Abundant parking in neighborhood and easy access to Muni lines and BART

100

WALK SCORE
WALKER'S PARADISE

2 MIN

WALK TO
POWELL & HYDE
CABLE CAR

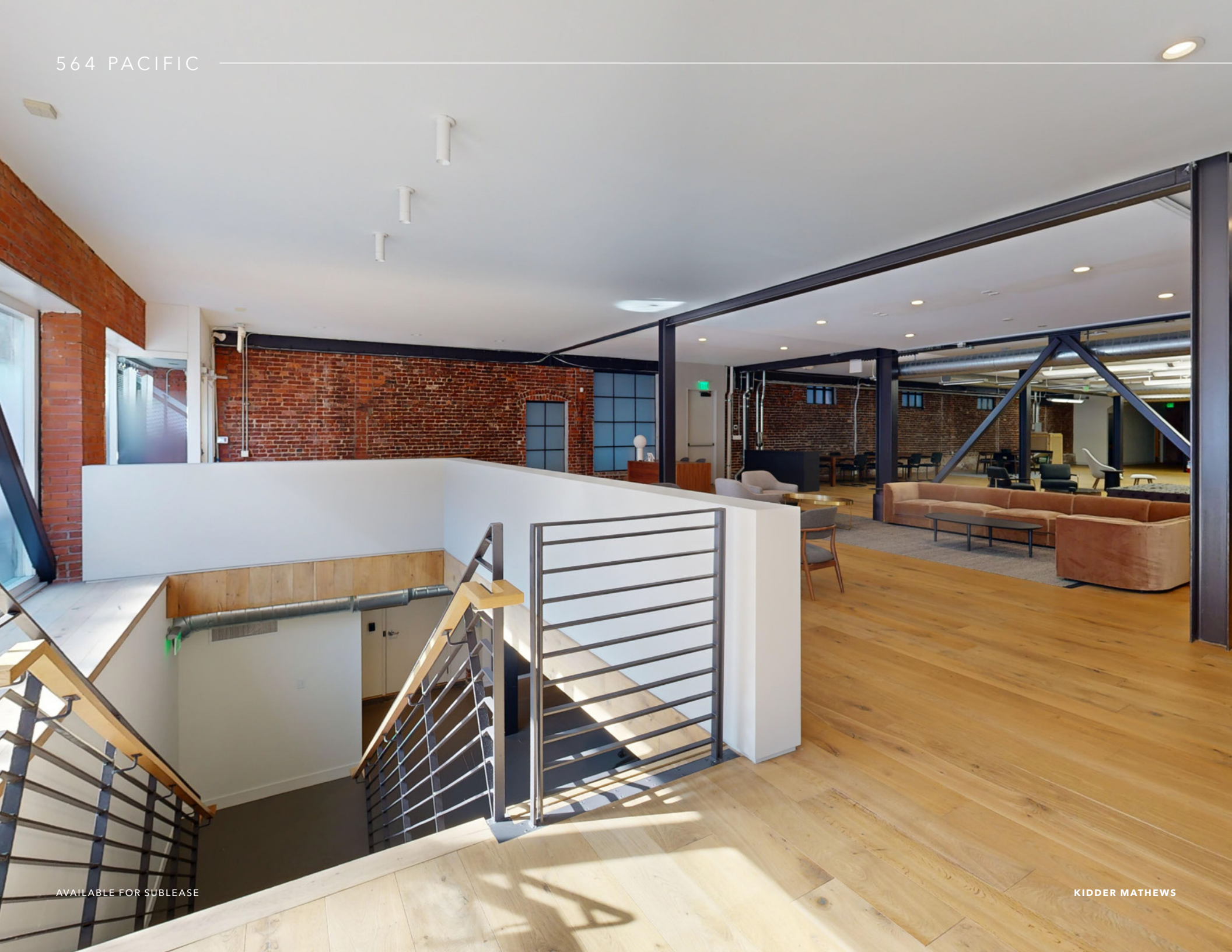
15 MIN

WALK TO MONTGOMERY
BART STATION

1 MIN

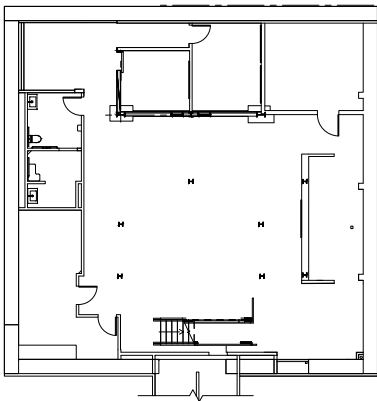
WALK TO
CALIFORNIA STREET
CABLE CAR



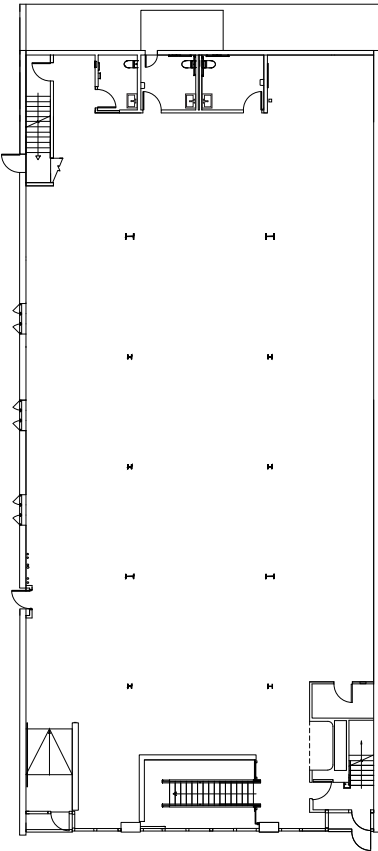


564 PACIFIC AVE

LOWER LEVEL



LEVEL 1



PACIFIC AVE

±11,000 SF

AVAILABLE

1.31.29

TERM RUNS THROUGH

NOW

AVAILABLE



564 PACIFIC

Exclusively leased by

MARC TROVATO

415.229.8914

marc.trovato@kidder.com

LIC N° 01263606

KIDDER.COM

This information supplied herein is from sources we deem reliable. It is provided without any representation, warranty, or guarantee, expressed or implied as to its accuracy. Prospective Buyer or Tenant should conduct an independent investigation and verification of all matters deemed to be material, including, but not limited to, statements of income and expenses. Consult your attorney, accountant, or other professional advisor. All Kidder Mathews designs are the sole property of Kidder Mathews. Branded materials and layouts are not authorized for use by any other firm or person.

