

FOR LEASE



5306 W. VILLAGE PARKWAY, SUITE 2 | VILLAGE ON THE CREEKS, ROGERS, AR

Village on the Creeks is the largest garden office park in Northwest Arkansas, offering premier office, retail, and restaurant spaces in a beautiful lake setting adjacent to the Razorback Greenway Trail System. Suite 1 consists of three offices, reception area, breakroom, and extra space that could be used as a conference room.



**Suite 2:
2,704 SF**



**4 Private Offices
Large Bullpen Area
with 7 half-wall
workspaces**

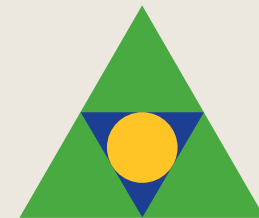


**Direct access to
Razorback Greenway
and walking trails in a
beautiful setting**



**Quick and easy
access to
Interstate 49**

**\$25.00 PSF
+ Gas and Electric**



Devereux
Real Estate Investments

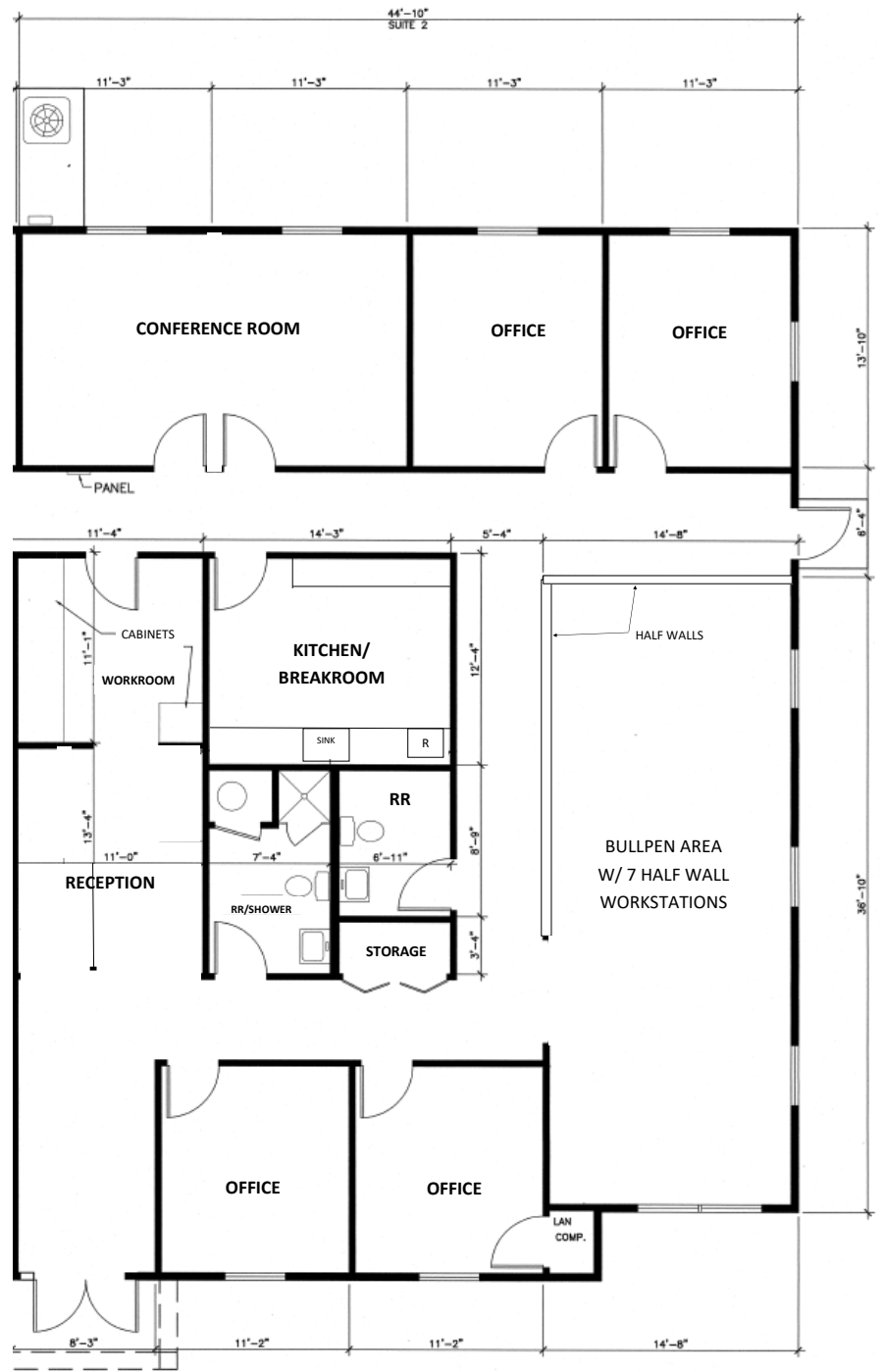
**PAT MORRISON
EXECUTIVE BROKER**

**5309 W. VILLAGE PKWY | SUITE 2
ROGERS, AR 72758
P. 479-464-4292
C. 479-936-4200
PatMorrison@DevereuxREI.com**

FLOOR PLAN

5305 W. Village Parkway Suite 2

- 2,704 SF
- 4 Private Offices
- Large Bullpen with 7 half-wall workstations
- Back offices have lake view
- Large Conference Room
- Reception Area
- Kitchen
- 2 Restrooms, 1 with shower



Devereux

Real Estate Investments

PAT MORRISON
EXECUTIVE BROKER

5309 W. VILLAGE PKWY | SUITE 2
ROGERS, AR 72758
P. 479-464-4292
C. 479-936-4200
PatMorrison@DevereuxREI.com



PAT MORRISON
EXECUTIVE BROKER

5309 W. VILLAGE PKWY | SUITE 2
ROGERS, AR 72758
P. 479-464-4292
C. 479-936-4200
PatMorrison@DevereuxREI.com

