

For Lease



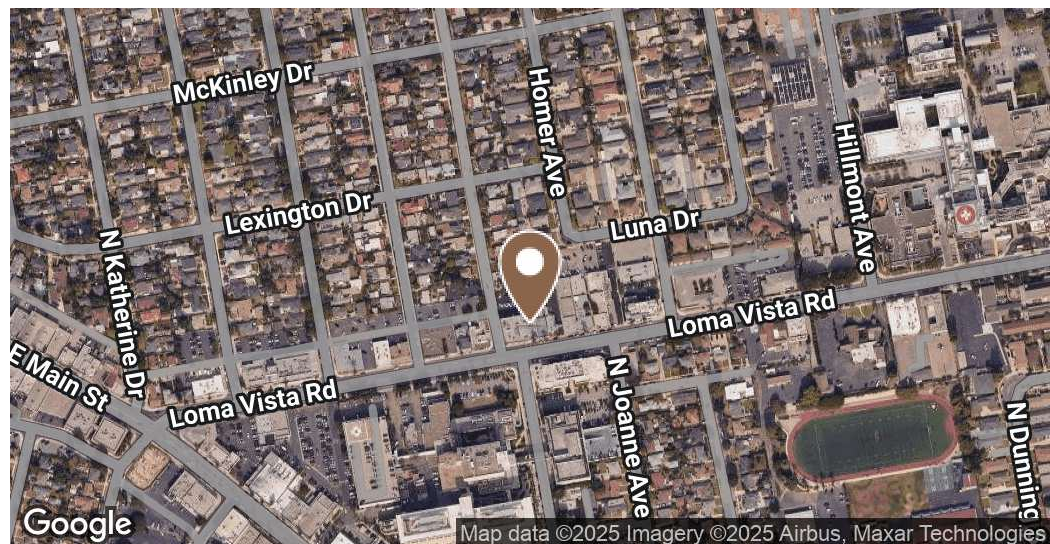
JEFFREY R. BECKER CCIM . CPM . RPA

805.653.6794

jbecker@beckergroup.com

CA DRE #01213236

40 SOUTH ASH STREET | VENTURA, CA 93001 | 805.653.6794 | BECKERGRP.COM



PROPERTY DESCRIPTION

Medical office suite featuring a waiting room, reception desk, break room, restroom, 3 medical rooms, 2 private offices + storage. Elevator served. Sinks in medical rooms.

LOCATION DESCRIPTION

Located in Mid Town Ventura's hospital corridor, across the street from Community Memorial Hospital.

CONTACT INFORMATION

To find out more, or setup a tour, please contact:

Jeffrey R. Becker | 805.653.6794 ext. 201 | jbecker@beckergrp.com

Matt Kingsley | 805.653.6794 ext. 214 | mkingsley@beckergrp.com

OFFERING SUMMARY

Lease Rate:	\$1.95 SF/month (MG)
Available SF:	1,300 SF
Building Size:	11,640 SF

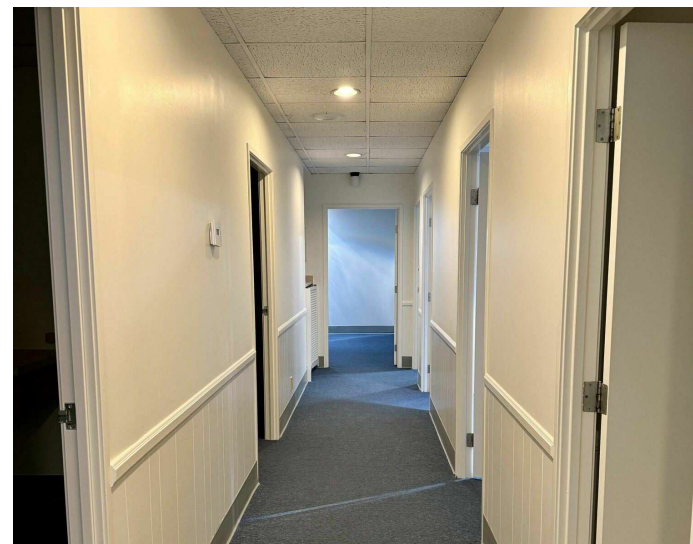
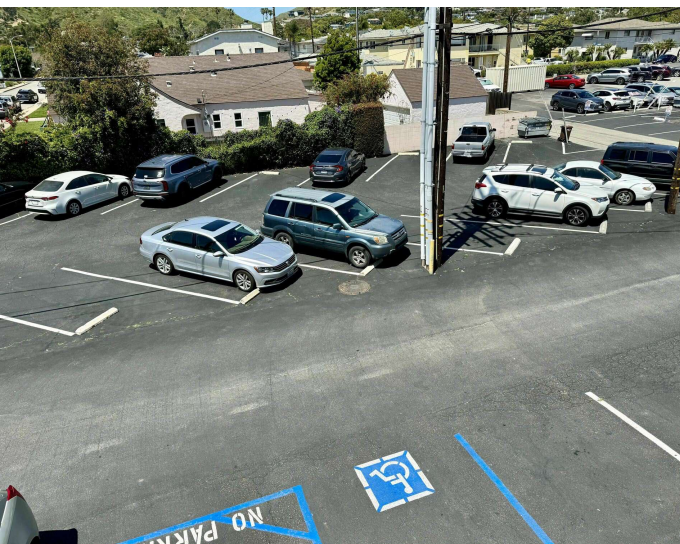
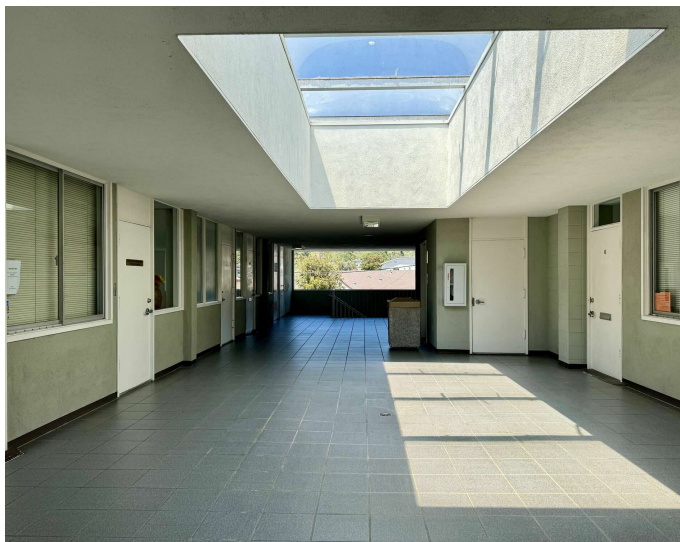
DEMOGRAPHICS	0.3 MILES	0.5 MILES	1 MILE
Total Households	415	1,454	5,282
Total Population	991	3,518	12,708
Average HH Income	\$131,262	\$129,936	\$129,706

JEFFREY R. BECKER CCIM . CPM . RPA

805.653.6794

jbecker@beckergrp.com

CA DRE #01213236



JEFFREY R. BECKER CCIM . CPM . RPA

805.653.6794

jbecker@beckergrp.com

CA DRE #01213236