

15415 Pinehurst Dr. Basehor, KS 66007

For Sale | \$1,750,000 | 6,813 SF Building

For Lease | 3,813 SF Suite Can Be Divided | \$19.50 / SF + NNN



Multi-Tenant Commercial Building | 40% Occupied with Tenant Thru 2027
3,813 SF Suite Available | Can Be Subdivided
Built in 2007 & Well Maintained
NNN Estimated at \$6.71 PSF



Josh Haith
Josh@Haith.com

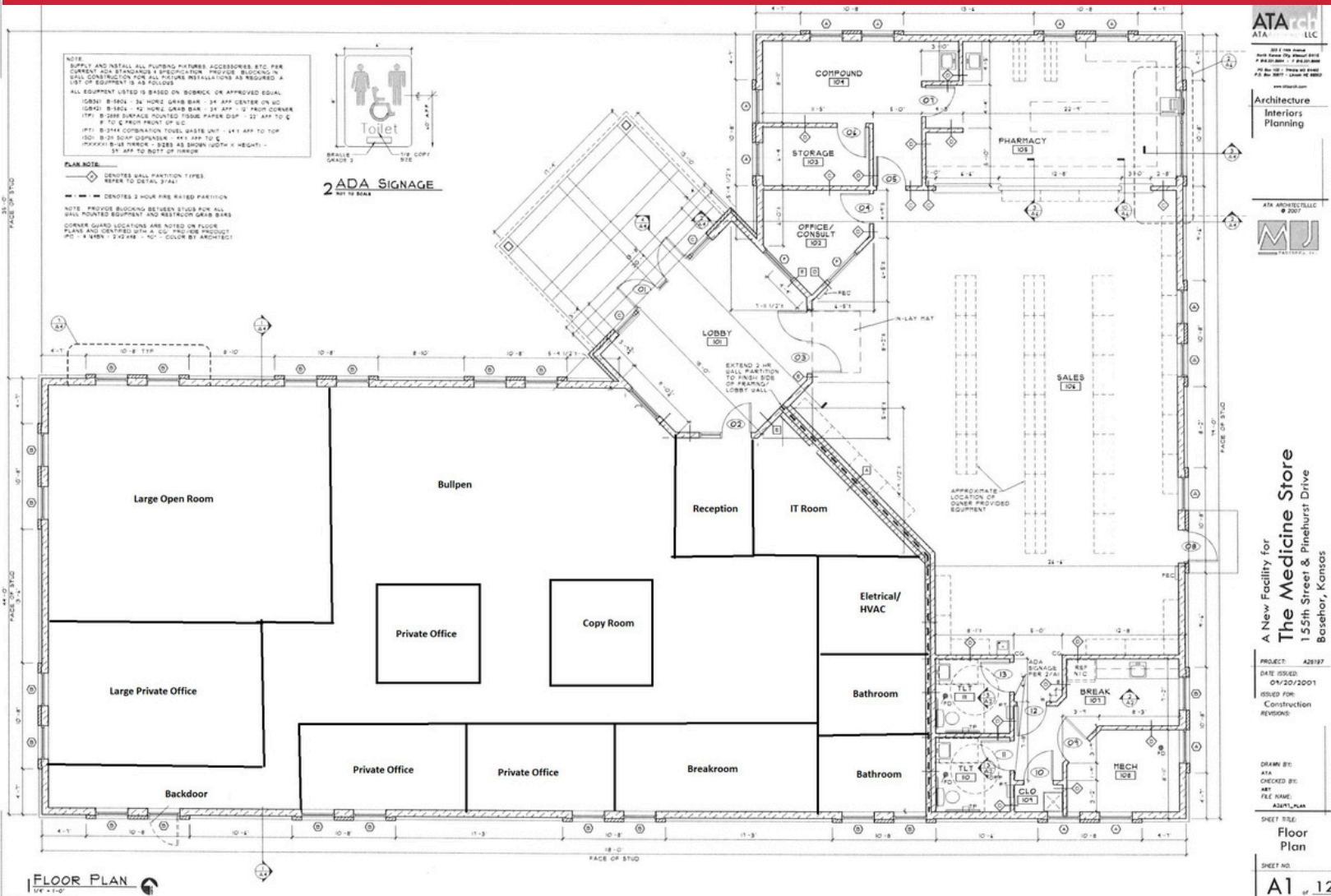


O: (913) 888-3456 x 7
www.Haith.com

15415 Pinehurst Dr. Basehor, KS 66007

For Sale | \$1,750,000

For Lease | 3,813 SF Suite Can Be Divided | \$19.50 / SF + NNN



- Medical Office Building | Owner-User or Investment Opportunity
- Built in 2007 for Pharmacy practice, which was sold. Original owners now selling the real estate.
- 6,913 SF Building | ~ 300 SF is Common Area
- Pharmacy is only current tenant and occupies 2,800 SF. Lease expires mid-2027. Additional lease information is available upon request.
- 3,813 SF Vacant Suite could be sub-divided for multiple tenants.
- Property Expenses (Total Estimated \$6.71 PSF)

Josh Haith
Josh@Haith.com

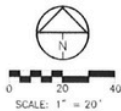
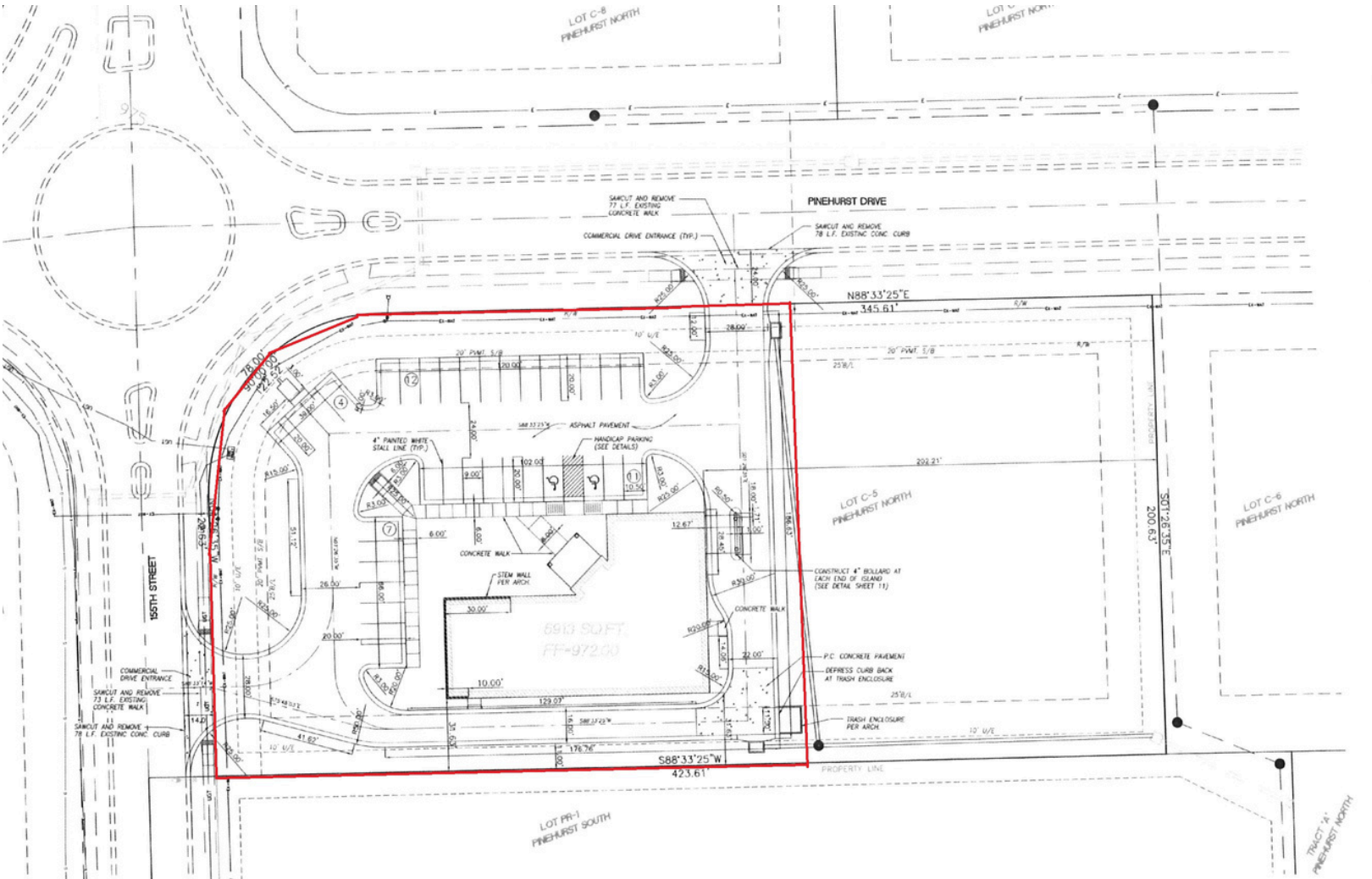


O: (913) 888-3456 x 7
www.Haith.com

15415 Pinehurst Dr. Basehor, KS 66007

For Sale | \$1,750,000

For Lease | 3,813 SF Suite Can Be Divided | \$19.50 / SF + NNN



PROJECT BENCHMARK
IRON SPIKE IN NE FACE OF TRANSMISSION LINE
POWER POLE, SW QUAD 24-40 & 158TH ST.
NOVD 88. ELEVATION = 962.59

GENERAL NOTES:
ALL CONSTRUCTION ON THIS PROJECT SHALL CONFORM TO THE CITY
OF BASEHOR TECHNICAL SPECIFICATIONS.
THE CONTRACTOR IS RESPONSIBLE FOR VERIFYING ALL EXISTING
UTILITY LOCATIONS PRIOR TO EXCAVATION.



SCHLAGEL & ASSOCIATES, P. A.
Engineers • Planners • Surveyors • Landscape Architects
14920 West 107th Street • Lenexa, Kansas 66215
(913) 492-5158 • Fax: (913) 492-5400

DATE	9-20-07	SITE DEVELOPMENT PLANS MEDICINE STORE DIMENSION PLAN
DESIGN	MAB	
DRAWN BY	MAB	SHEET NO. 3 OF 11
PROJ. NO.	07-081	

Josh Haith
Josh@Haith.com



O: (913) 888-3456 x 7
www.Haith.com

15415 Pinehurst Dr. Basehor, KS 66007

For Sale | \$1,750,000

For Lease | 3,813 SF Suite Can Be Divided | \$19.50 / SF + NNN



Josh Haith
Josh@Haith.com

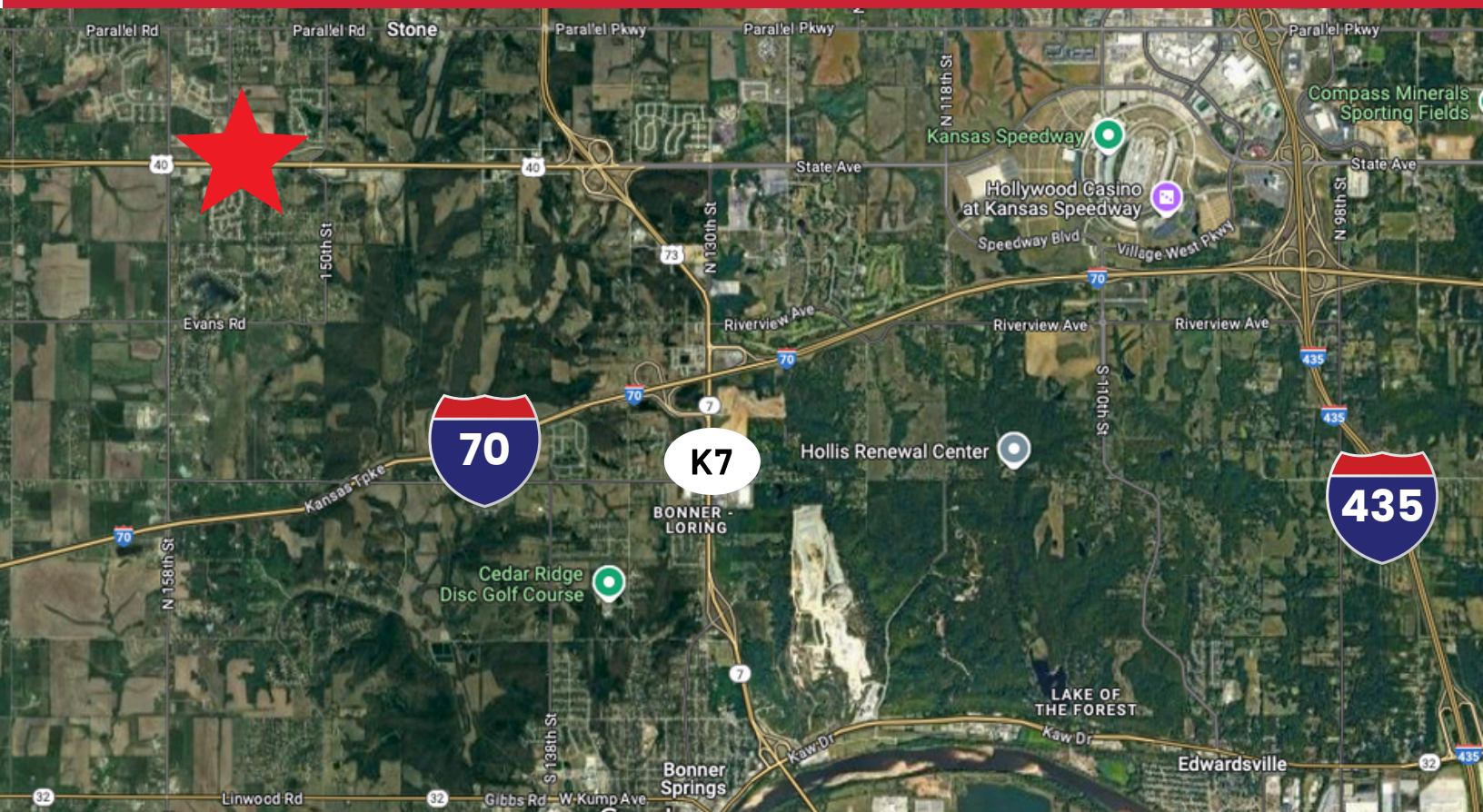


O: (913) 888-3456 x 7
www.Haith.com

15415 Pinehurst Dr. Basehor, KS 66007

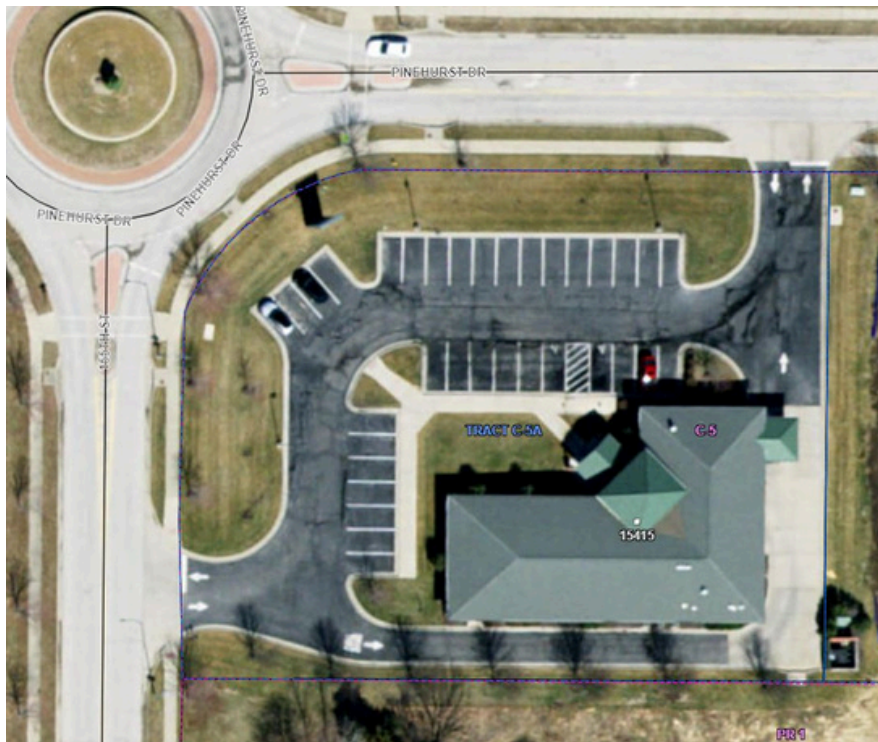
For Sale | \$1,750,000

For Lease | 3,813 SF Suite Can Be Divided | \$19.50 / SF + NNN



Easy Access to I-70 & 40 Hwy

MCI Airport	29 Miles
De Soto	12 Miles
Downtown KC	21 Miles



Josh Haith
Josh@Haith.com



O: (913) 888-3456 x 7
www.Haith.com