



THE WATERMARK
AT SAN JOSE

The Watermark at San Jose
1015 South Bascom Ave

Premium retail leasing opportunity
in the heart of San Jose

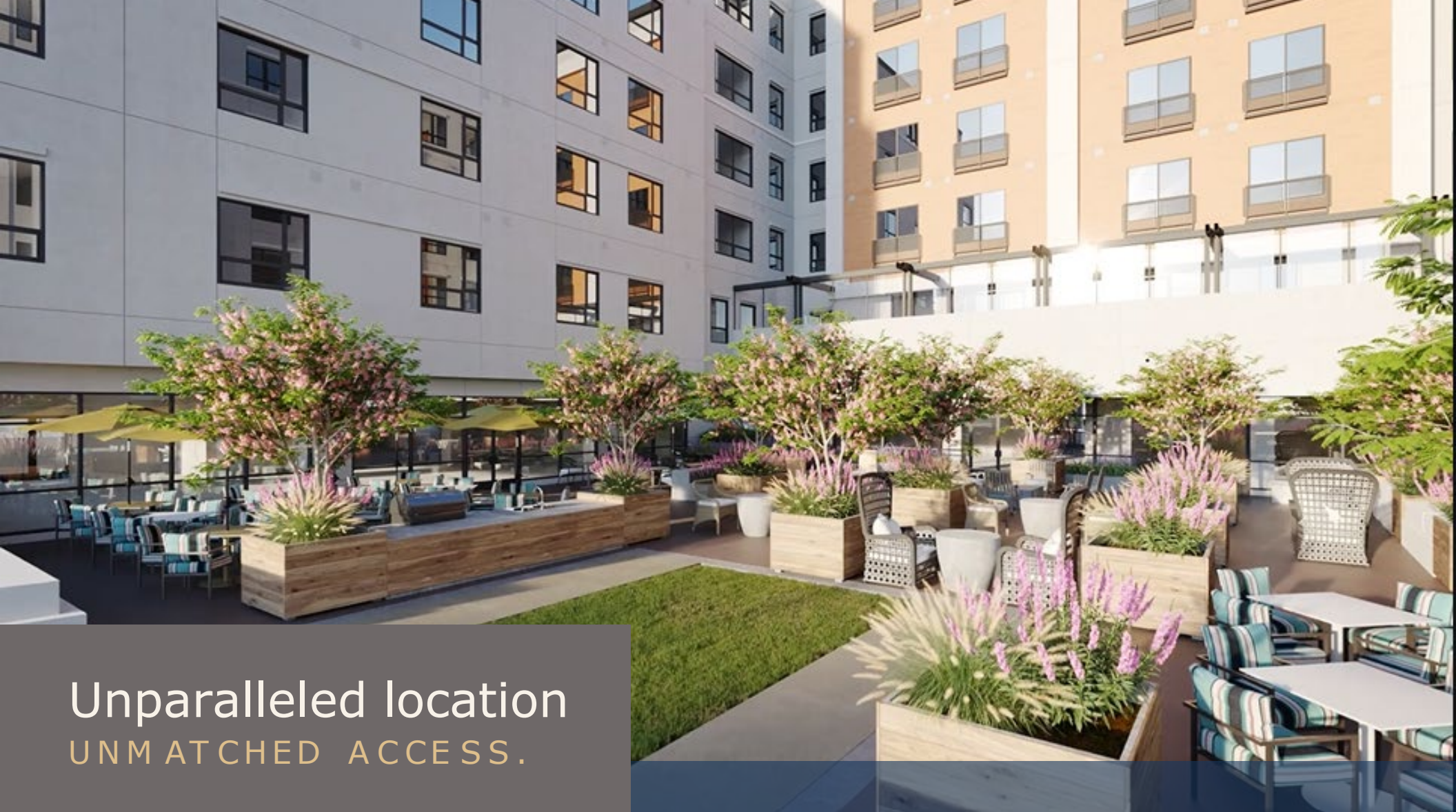
JUSTIN CHOI

415 395 7262
Justin.Choi@jll.com
RE License: 02107928

JEFF BADSTUBNER

415 395 4900
Jeff.Badstubner@jll.com
RE License: 01155279





Unparalleled location
UNMATCHED ACCESS.

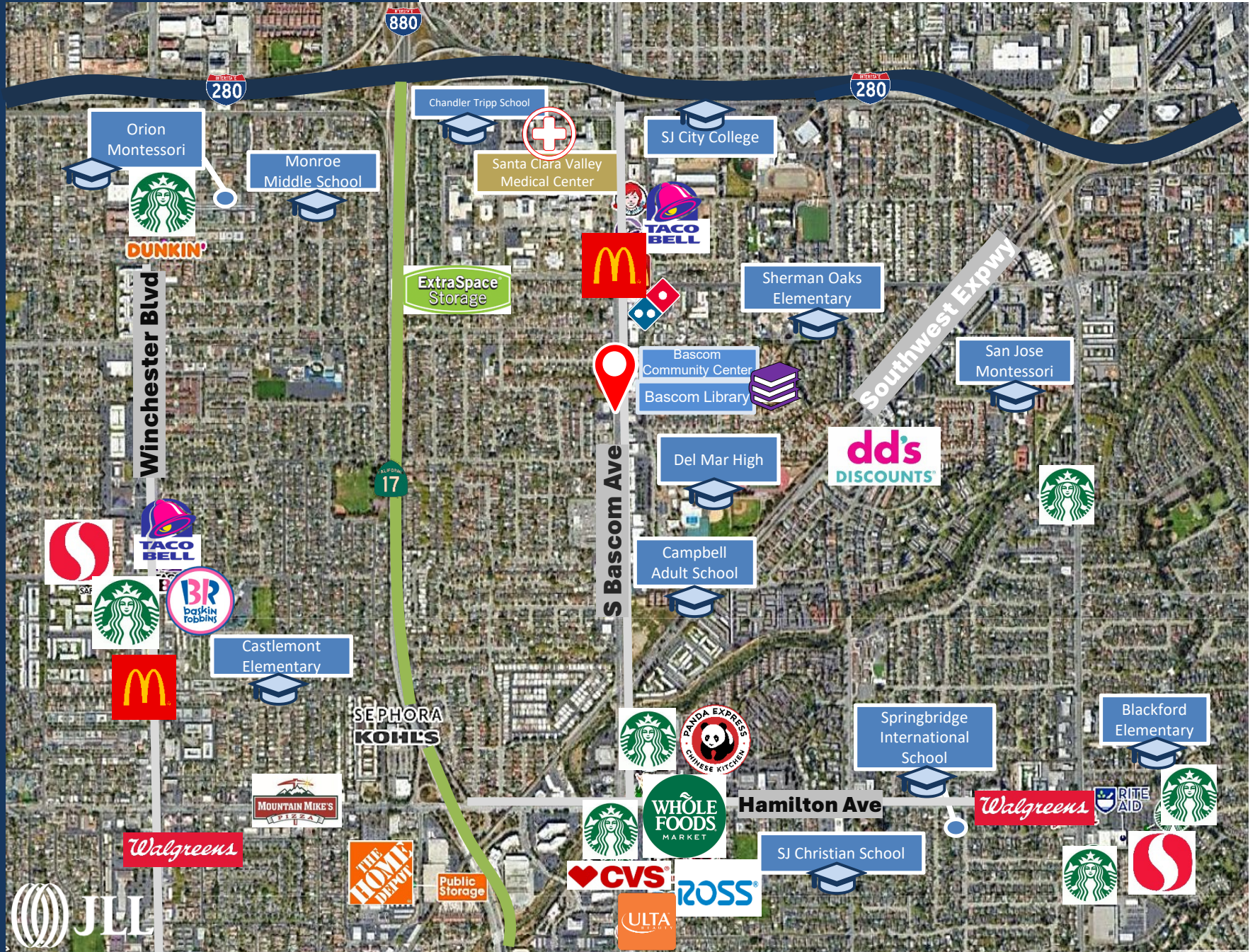
Property Highlights

- » Built in 2024 with a contemporary design
- » Ideal location in one of San Jose's newest and most dynamic senior living communities
- » 165 residential units on site
- » 250,767 suburban population within 3 miles
- » Located next to Santa Clara Valley Medical Center
- » Two separate ground floor spaces: 1,050 SF (with patio opportunity) and 1,225 SF
- » In cold shell condition, TI package available
- » 19 dedicated retail parking spots

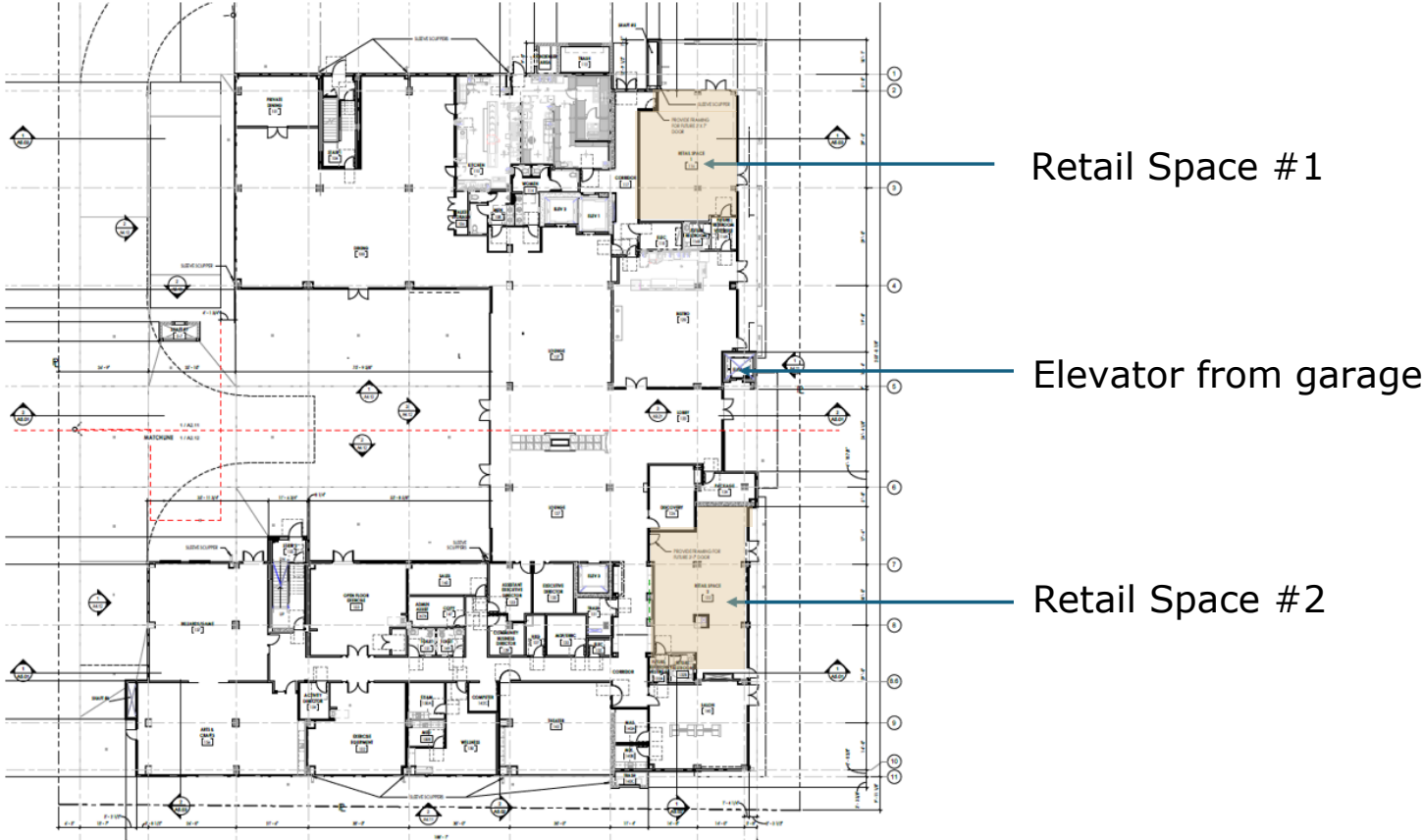
In the heart of San Jose



In the heart of San Jose



A Bird's Eye View



The Watermark – Ground Floor Plan

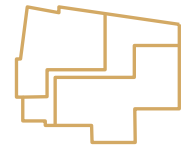


Available Space

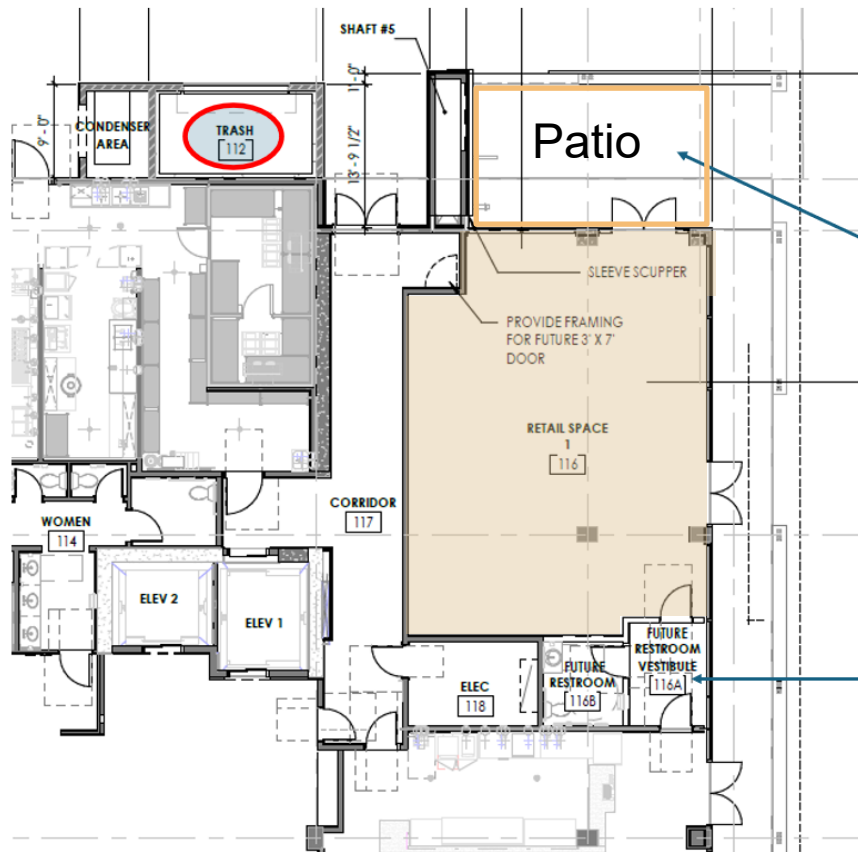
MODERN SANCTUARY.



Contains 165 residential apartments



Cold Shell Condition



Retail Space #1

- 1,050 SF
- 344 SF of Patio Space

Outdoor Patio/seating

Existing bathroom.
Shared with "Bistro" below.

Retail Space 1: 1,050 SF

Ground Floor Retail

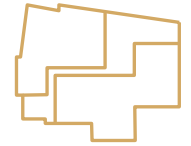


Available Space

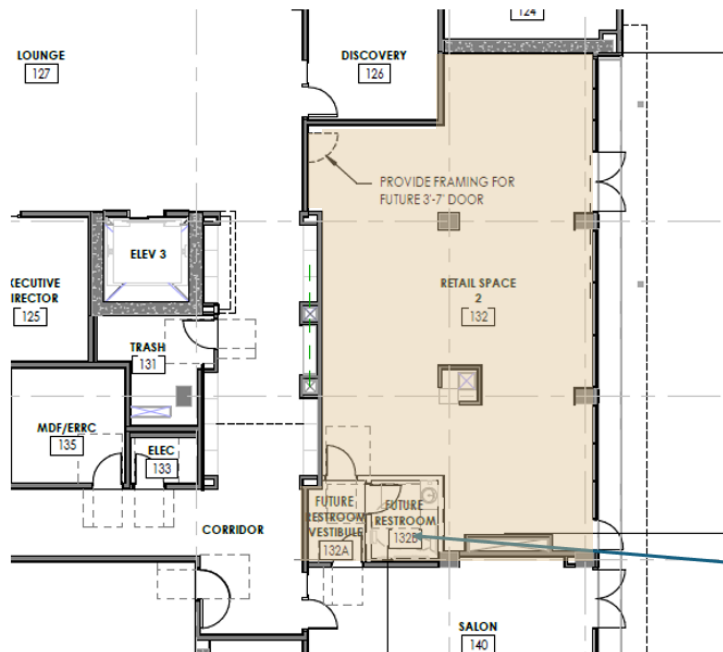
MODERN SANCTUARY.



Contains 165 residential apartments



Cold Shell Condition



Retail Space #2
1,225 SF

Existing bathroom. Shared with "Salon" below.

Retail Space 2: 1,225 SF

Ground Floor Retail





JUSTIN CHOI

415 395 7262
Justin.Choi@am.jll.com
RE License: 02107928

JEFF BADSTUBNER

415 395 4900
Jeff.Badstubner@jll.com
RE License: 01155279

