



Jones Lang LaSalle
Brokerage, Inc.

LEASING
NOW

**UNION
PARK** ||
7050 & 7070





Space for your ideas **to grow.**

Available Space

4,710 SF

Lease Rate

\$26.00 FS

Parking Ratio

4.00/1,000 SF

Timing

AVAILABLE NOW

UNION PARK

7050 & 7070

BUILDING HIGHLIGHTS



Building Signage and Excellent Visibility



Move-in Ready Suite Available



Structured Parking with EV Charging Stations



Highly Walkable with Access to Fort Union Shops + Restaurants



Class A Finishes



Stunning Mountain Views



High-Speed Fiber Optic Network and Internet Connectivity



Fitness Center



Talk about making a
first impression.



UNION PARK

7050 & 7070

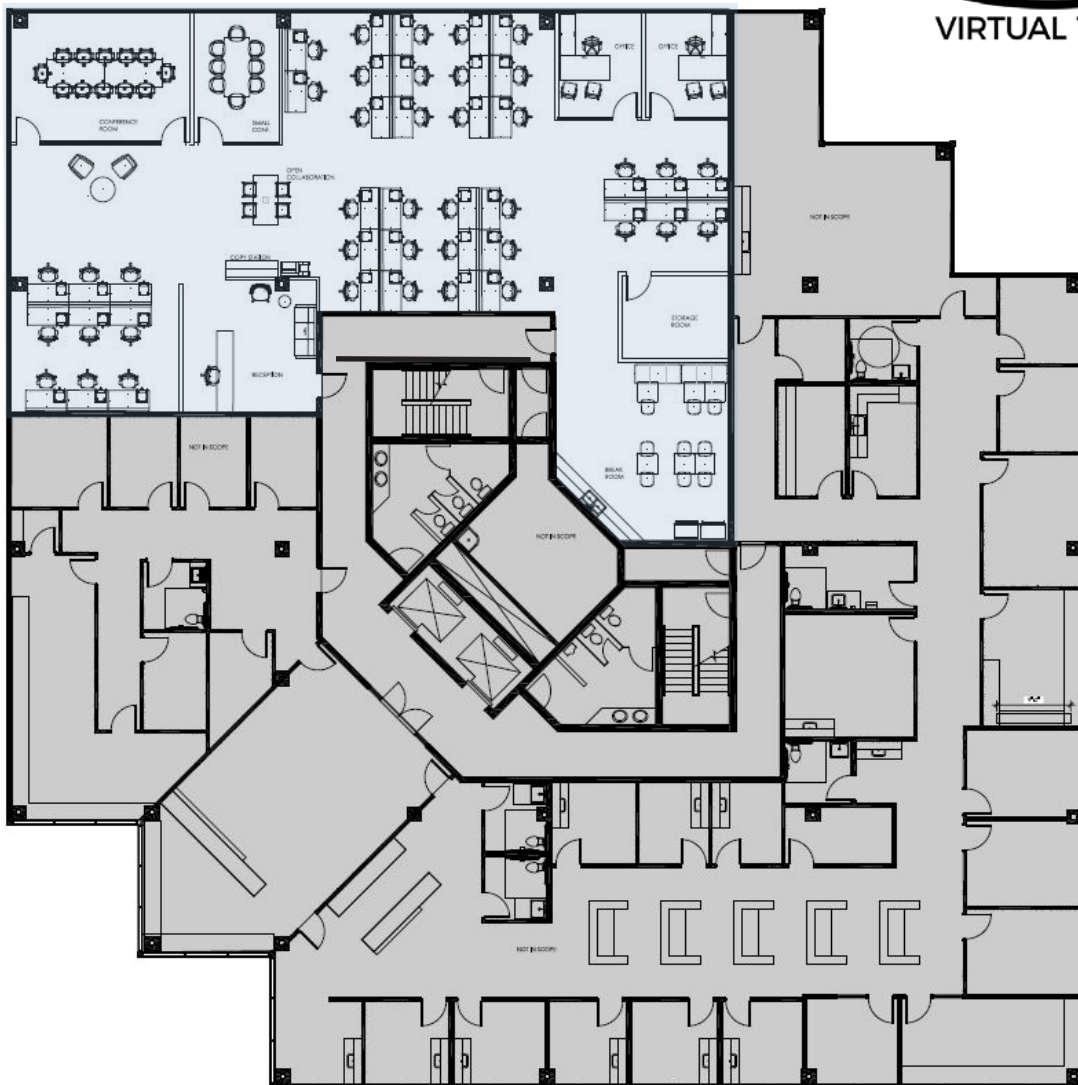


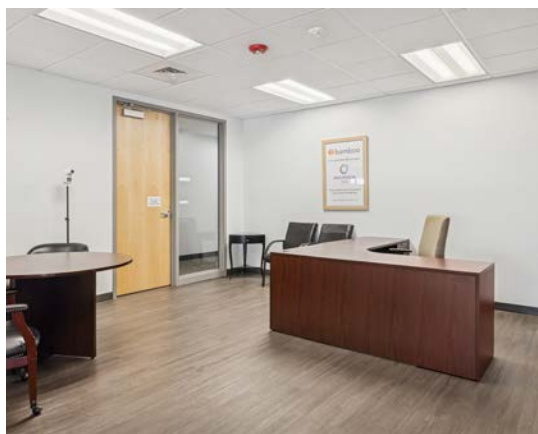


Available Space

FLOOR 5 | SUITE 500
MOVE-IN READY SUITE
4,710 SF

360°
VIRTUAL TOUR





**UNION
PARK** ||
7050 & 7070

Area Amenities



900 E



**BUFFALO
WILD
WINGS**

LONGHORN
STEAKHOUSE



verizon
**FIREHOUSE
SUBS**

Chick-fil-A

**The Shops
at Fort Union**



THE ORIGINAL
PANCAKE HOUSE

Michael's

DSW
DESIGNER SHOE WHOLESALE

FIVE GUYS
BURGERS and FRIES

petco



Smith's

OfficeMax

DICK'S
SPORTING GOODS

jamba

SUBWAY

Walmart

South Union Avenue

RESTAURANTS TO THE WEST

Itto Sushi // The Midway

Thai Spice Restaurant

La Frontera Mexican Restaurant

Kneaders Bakery & Cafe

Rise & Grind Coffee // Landmark Grill

Epicure Fine Food & Drink

Hires Big H // Bohemian Brewery

UNION PARK

7050 & 7070

UNION
PARK

7050 & 7070

Fort Union Blvd

S 1300 E

noodles
& COMPANY

Cafe Rio
MEXICAN GRILL

COST PLUS
WORLD MARKET

TRADER
JOE'S

TJ-maxx

CHASE

TARGET

BARNES
& NOBLE

THE
HOME
DEPOT



IN-N-OUT
BURGER

Union Park Avenue



**UNION
PARK**
7050 & 7070

CONTACT INFORMATION

David Nixon

david.nixon@jll.com

+1 801 456 9518

Bronson Rawlins

bronson.rawlins@jll.com

+1 801 456 9513

www.us.joneslanglasalle.com/saltlakecity

Jones Lang LaSalle Brokerage, Inc.

©2025 Jones Lang LaSalle LP, Inc. All rights reserved. All information contained herein is from sources deemed reliable; however, no representation or warranty is made to the accuracy thereof.