



# 1055 Wilshire Boulevard

LOS ANGELES, CA 90017

## FOR LEASE

### Experience meets creativity



**CLASS A  
TOWER**



**NEW  
RENOVATIONS**

**ABUNDANT** on-site secured parking at a 2/1000 ratio & competitive rates

**NEWLY** renovated common areas

**BUILT** in 1986 & renovated in 2018

**AMAZING** 360° views from Downtown to Hollywood

**EASY** ingress & egress with close freeway access

**\$33.00** full service gross

**\$2.00/SF**

**BROKER BONUS**

**JOHN ANTHONY, SIOR**  
213.225.7218  
[john.anthony@kidder.com](mailto:john.anthony@kidder.com)  
LIC N° 01226464

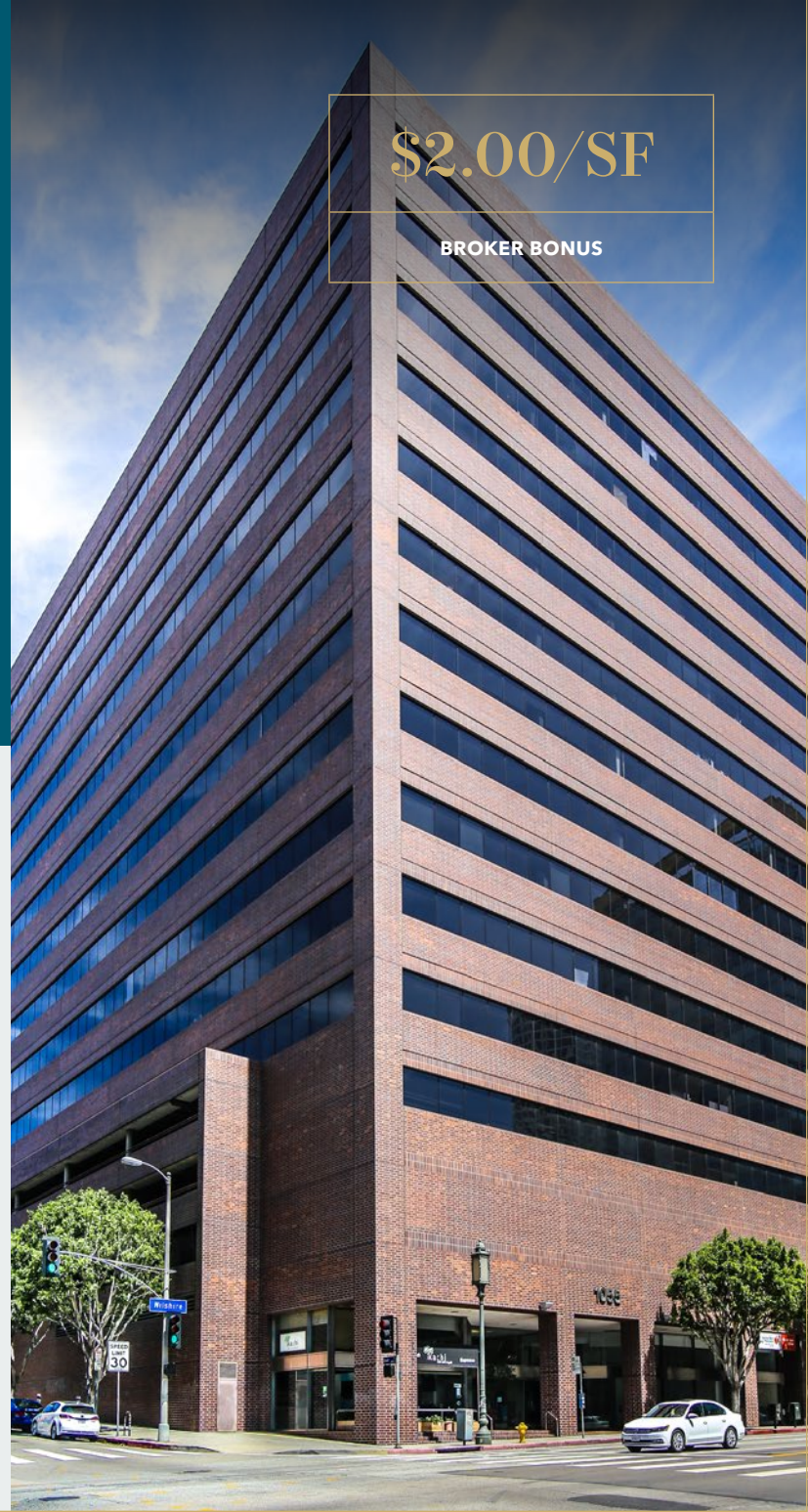
**CHRISTOPHER STECK, CCIM**  
213.225.7231  
[christopher.steck@kidder.com](mailto:christopher.steck@kidder.com)  
LIC N° 01841338

**CHRISTOPHER GIORDANO**  
213.225.7219  
[christopher.giordano@kidder.com](mailto:christopher.giordano@kidder.com)  
LIC N° 01928706

**Kidder  
Mathews**

[KIDDER.COM](http://KIDDER.COM)

This information supplied herein is from sources we deem reliable. It is provided without any representation, warranty, or guarantee, expressed or implied as to its accuracy. Prospective Buyer or Tenant should conduct an independent investigation and verification of all matters deemed to be material, including, but not limited to, statements of income and expenses. Consult your attorney, accountant, or other professional advisor.



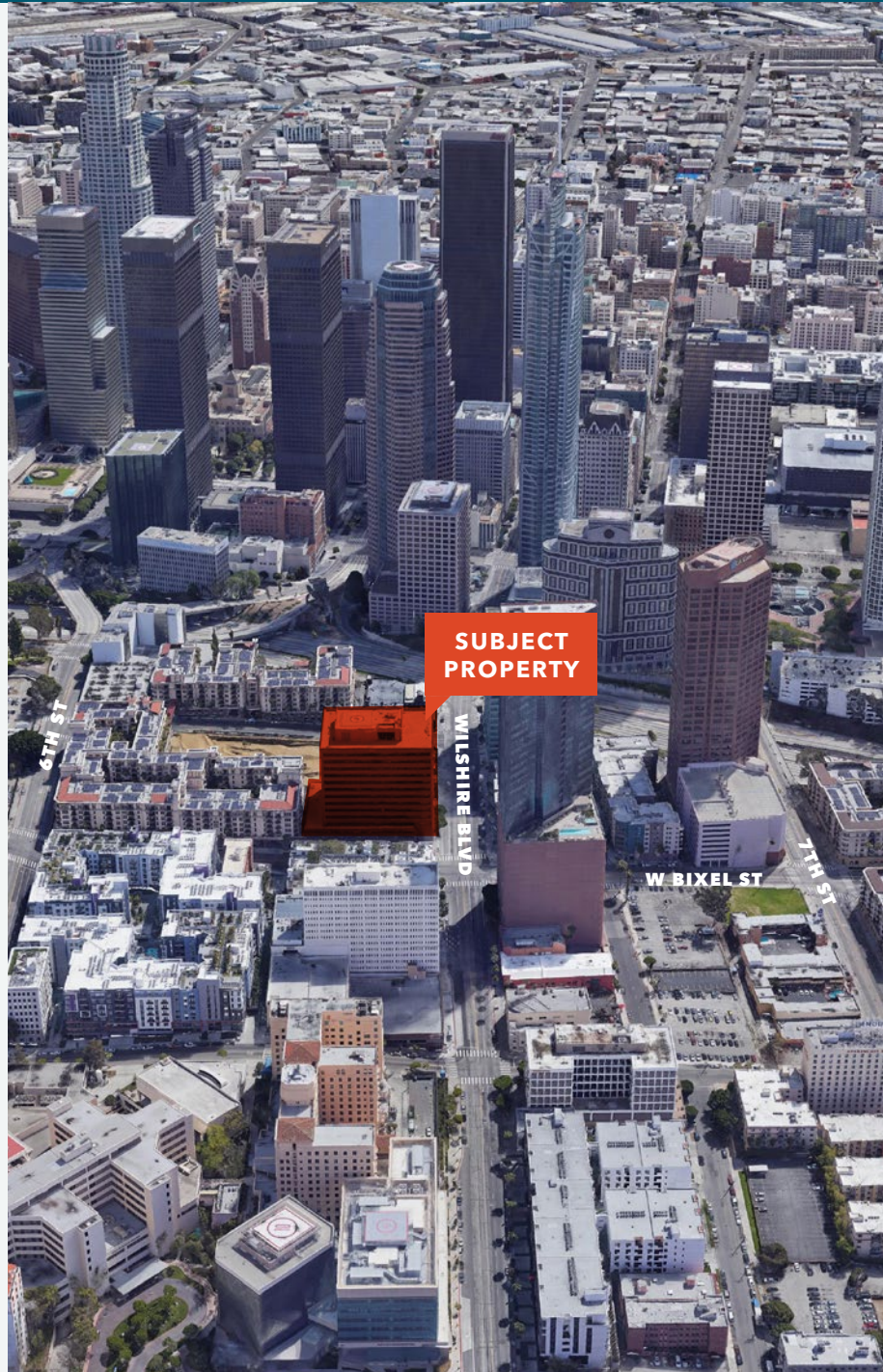
FOR LEASE

# 1055 Wilshire Boulevard

LOS ANGELES, CA 90017

## AVAILABILITIES

Suites	Type	SF
Ground 4	Retail	359
Ground 6	Retail	1,103
Ground 7	Retail	1,312
Suite 800	Office	10,358
Suite 850	Office	2,321
Suite 868	Office	1,215
Suite 880	Interior Storage	243
Suite 920	Office	1,415
Suite 945B	Office	1,025
Suite 1020	Office	5,095
Suite 1060	Office	6,005
Suite 1100A	Office	10,492
Suite 1400	Office	9,273
Suite 1460	Office	3,686
Suite 1480	Office	4,870
Suite 1510	Office	2,379
Suite 1560	Office	6,007
Suite 1705	Office	3,278
Suite 1708	Office	2,112
Suite 1760	Office	4,031
Suite 1800	Office	7,185
Suite 1860	Office	5,384
Suite 1920	Office	1,782
Suite 1955	Office	9,108
<b>Total Current Vacancy</b>		<b>100,038</b>



**JOHN ANTHONY, SIOR**  
213.225.7218  
[john.anthony@kiddier.com](mailto:john.anthony@kiddier.com)  
LIC N° 01226464

**CHRISTOPHER STECK, CCIM**  
213.225.7231  
[christopher.steck@kiddier.com](mailto:christopher.steck@kiddier.com)  
LIC N° 01841338

**CHRISTOPHER GIORDANO**  
213.225.7219  
[christopher.giordano@kiddier.com](mailto:christopher.giordano@kiddier.com)  
LIC N° 01928706

**KIDDER.COM**

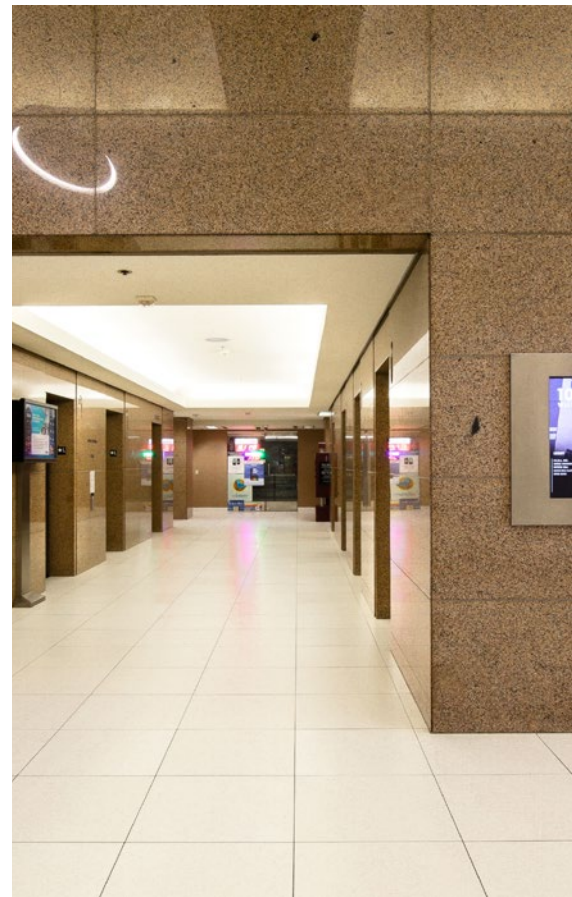
This information supplied herein is from sources we deem reliable. It is provided without any representation, warranty, or guarantee, expressed or implied as to its accuracy. Prospective Buyer or Tenant should conduct an independent investigation and verification of all matters deemed to be material, including, but not limited to, statements of income and expenses. Consult your attorney, accountant, or other professional advisor.



**FOR LEASE**

# 1055 Wilshire Boulevard

LOS ANGELES, CA 90017



**JOHN ANTHONY, SIOR**  
213.225.7218  
[john.anthony@kidder.com](mailto:john.anthony@kidder.com)  
LIC N° 01226464

**CHRISTOPHER STECK, CCIM**  
213.225.7231  
[christopher.steck@kidder.com](mailto:christopher.steck@kidder.com)  
LIC N° 01841338

**CHRISTOPHER GIORDANO**  
213.225.7219  
[christopher.giordano@kidder.com](mailto:christopher.giordano@kidder.com)  
LIC N° 01928706

**KIDDER.COM**

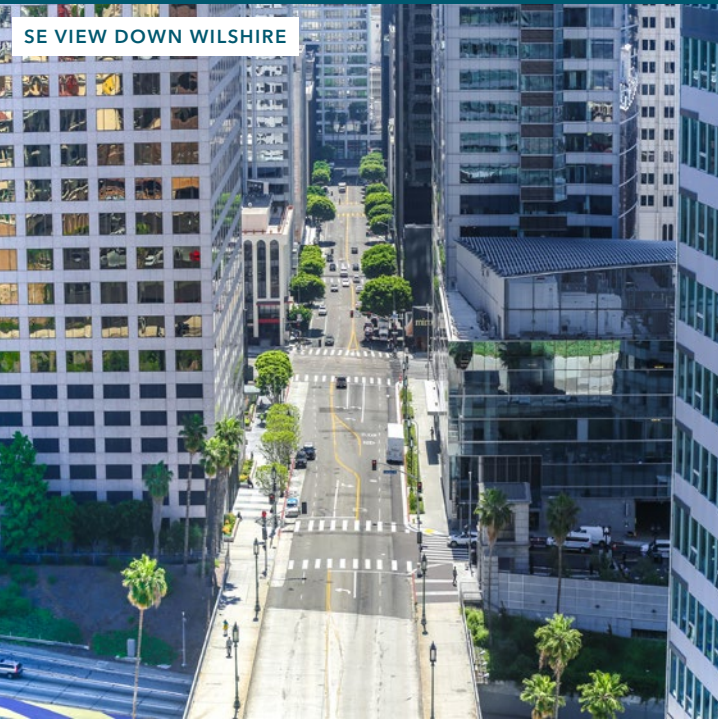
This information supplied herein is from sources we deem reliable. It is provided without any representation, warranty, or guarantee, expressed or implied as to its accuracy. Prospective Buyer or Tenant should conduct an independent investigation and verification of all matters deemed to be material, including, but not limited to, statements of income and expenses. Consult your attorney, accountant, or other professional advisor.



**FOR LEASE**

# 1055 Wilshire Boulevard

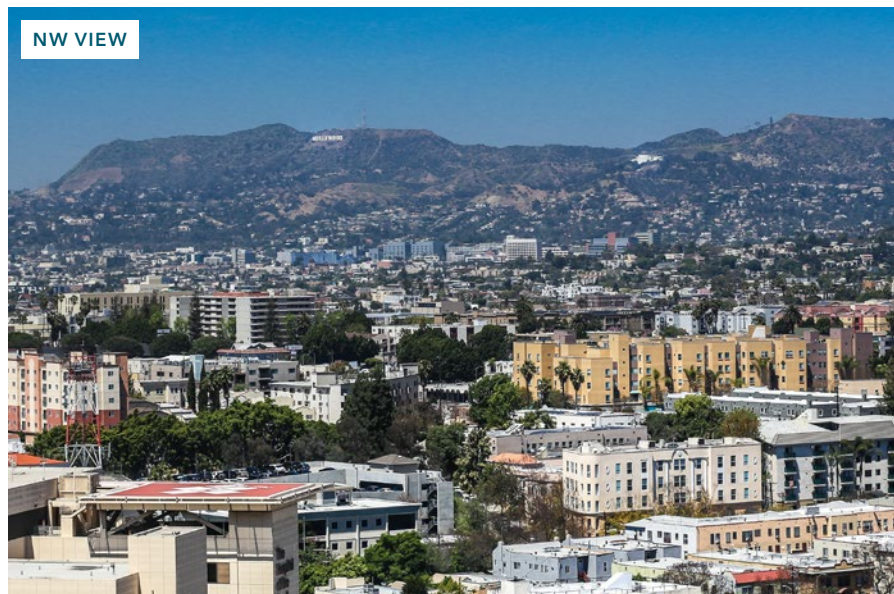
LOS ANGELES, CA 90017



SE VIEW DOWN WILSHIRE



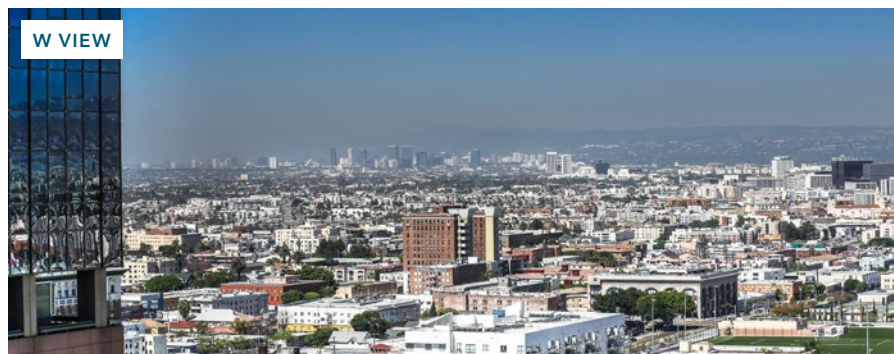
E VIEW



NW VIEW



S VIEW OF LA LIVE



W VIEW

**JOHN ANTHONY, SIOR**  
213.225.7218  
[john.anthony@kiddler.com](mailto:john.anthony@kiddler.com)  
LIC N° 01226464

**CHRISTOPHER STECK, CCIM**  
213.225.7231  
[christopher.steck@kiddler.com](mailto:christopher.steck@kiddler.com)  
LIC N° 01841338

**CHRISTOPHER GIORDANO**  
213.225.7219  
[christopher.giordano@kiddler.com](mailto:christopher.giordano@kiddler.com)  
LIC N° 01928706

**KIDDER.COM**

This information supplied herein is from sources we deem reliable. It is provided without any representation, warranty, or guarantee, expressed or implied as to its accuracy. Prospective Buyer or Tenant should conduct an independent investigation and verification of all matters deemed to be material, including, but not limited to, statements of income and expenses. Consult your attorney, accountant, or other professional advisor.

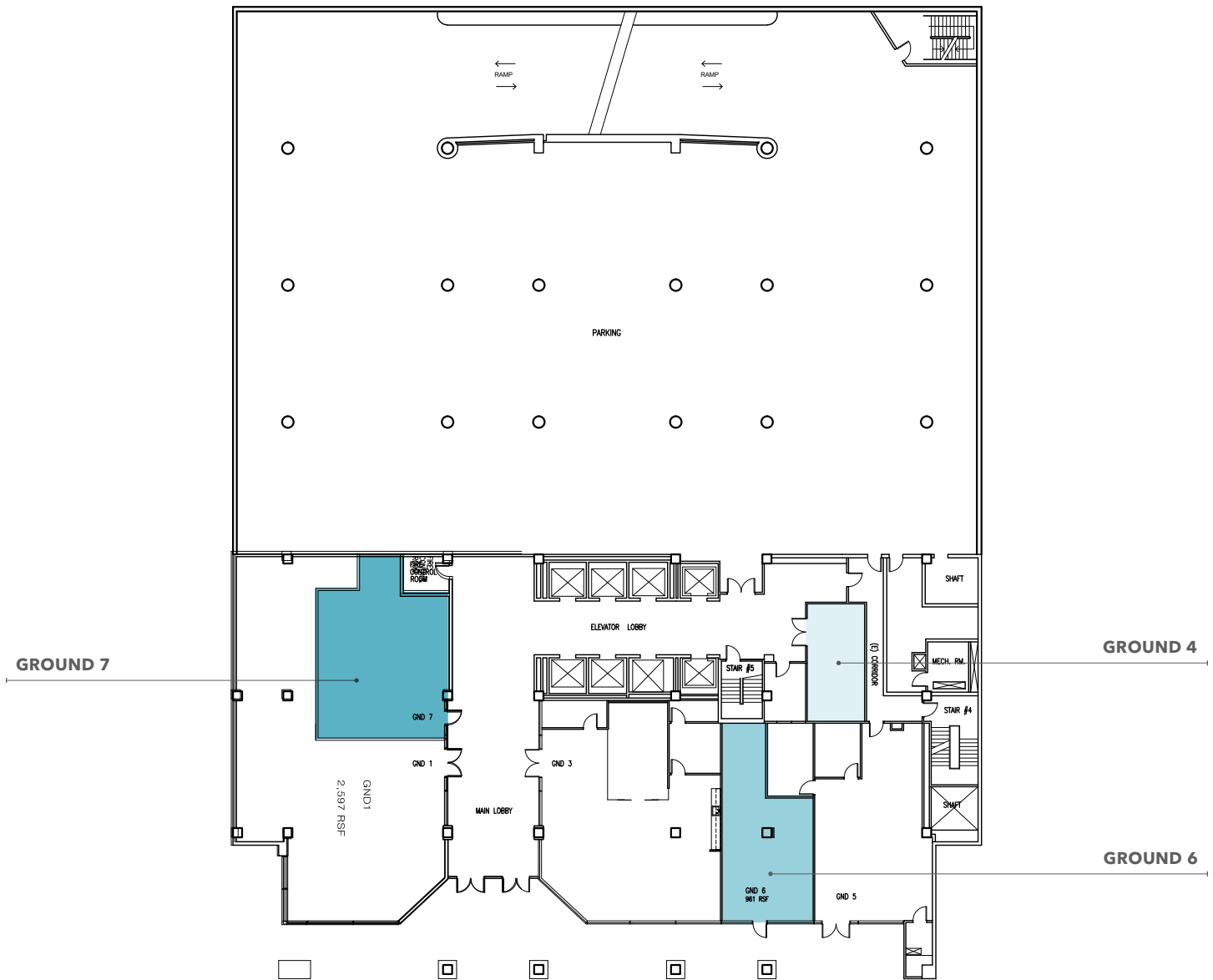


**FOR LEASE**

# 1055 Wilshire Boulevard

LOS ANGELES, CA 90017

## Ground 4, 6 & 7



**JOHN ANTHONY, SIOR**  
213.225.7218  
[john.anthony@kidder.com](mailto:john.anthony@kidder.com)  
LIC N° 01226464

**CHRISTOPHER STECK, CCIM**  
213.225.7231  
[christopher.steck@kidder.com](mailto:christopher.steck@kidder.com)  
LIC N° 01841338

**CHRISTOPHER GIORDANO**  
213.225.7219  
[christopher.giordano@kidder.com](mailto:christopher.giordano@kidder.com)  
LIC N° 01928706

**KIDDER.COM**

This information supplied herein is from sources we deem reliable. It is provided without any representation, warranty, or guarantee, expressed or implied as to its accuracy. Prospective Buyer or Tenant should conduct an independent investigation and verification of all matters deemed to be material, including, but not limited to, statements of income and expenses. Consult your attorney, accountant, or other professional advisor.

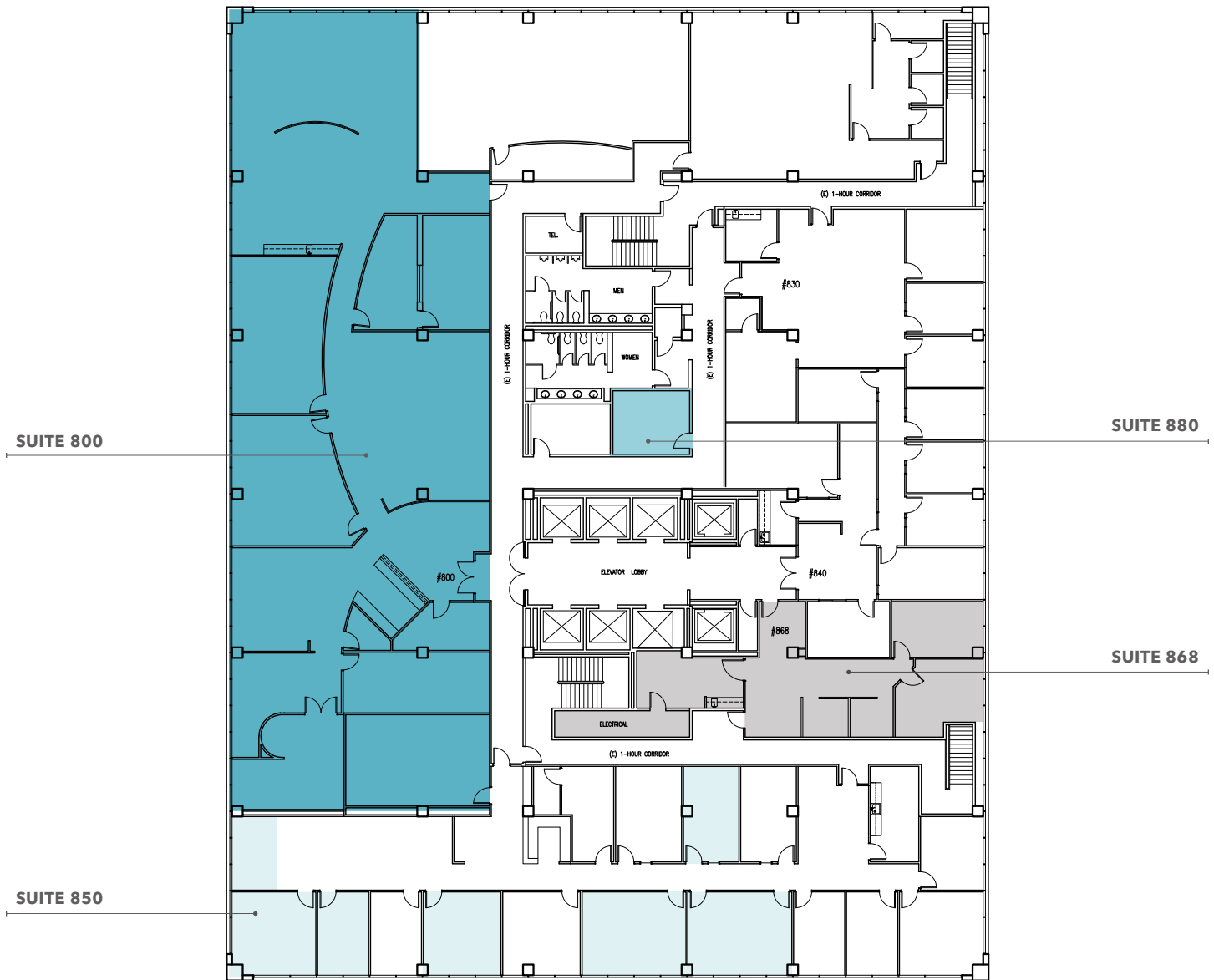


**FOR LEASE**

# 1055 Wilshire Boulevard

LOS ANGELES, CA 90017

## Suites 800, 850, 868 & 880



**JOHN ANTHONY, SIOR**  
213.225.7218  
[john.anthony@kiddier.com](mailto:john.anthony@kiddier.com)  
LIC N° 01226464

**CHRISTOPHER STECK, CCIM**  
213.225.7231  
[christopher.steck@kiddier.com](mailto:christopher.steck@kiddier.com)  
LIC N° 01841338

**CHRISTOPHER GIORDANO**  
213.225.7219  
[christopher.giordano@kiddier.com](mailto:christopher.giordano@kiddier.com)  
LIC N° 01928706

**KIDDER.COM**

This information supplied herein is from sources we deem reliable. It is provided without any representation, warranty, or guarantee, expressed or implied as to its accuracy. Prospective Buyer or Tenant should conduct an independent investigation and verification of all matters deemed to be material, including, but not limited to, statements of income and expenses. Consult your attorney, accountant, or other professional advisor.



**FOR LEASE**

# 1055 Wilshire Boulevard

LOS ANGELES, CA 90017

## Suites 945B & 920



**JOHN ANTHONY, SIOR**

213.225.7218

[john.anthony@kiddler.com](mailto:john.anthony@kiddler.com)

LIC N° 01226464

**CHRISTOPHER STECK, CCIM**

213.225.7231

[christopher.steck@kiddler.com](mailto:christopher.steck@kiddler.com)

LIC N° 01841338

**CHRISTOPHER GIORDANO**

213.225.7219

[christopher.giordano@kiddler.com](mailto:christopher.giordano@kiddler.com)

LIC N° 01928706

**KIDDER.COM**

This information supplied herein is from sources we deem reliable. It is provided without any representation, warranty, or guarantee, expressed or implied as to its accuracy. Prospective Buyer or Tenant should conduct an independent investigation and verification of all matters deemed to be material, including, but not limited to, statements of income and expenses. Consult your attorney, accountant, or other professional advisor.

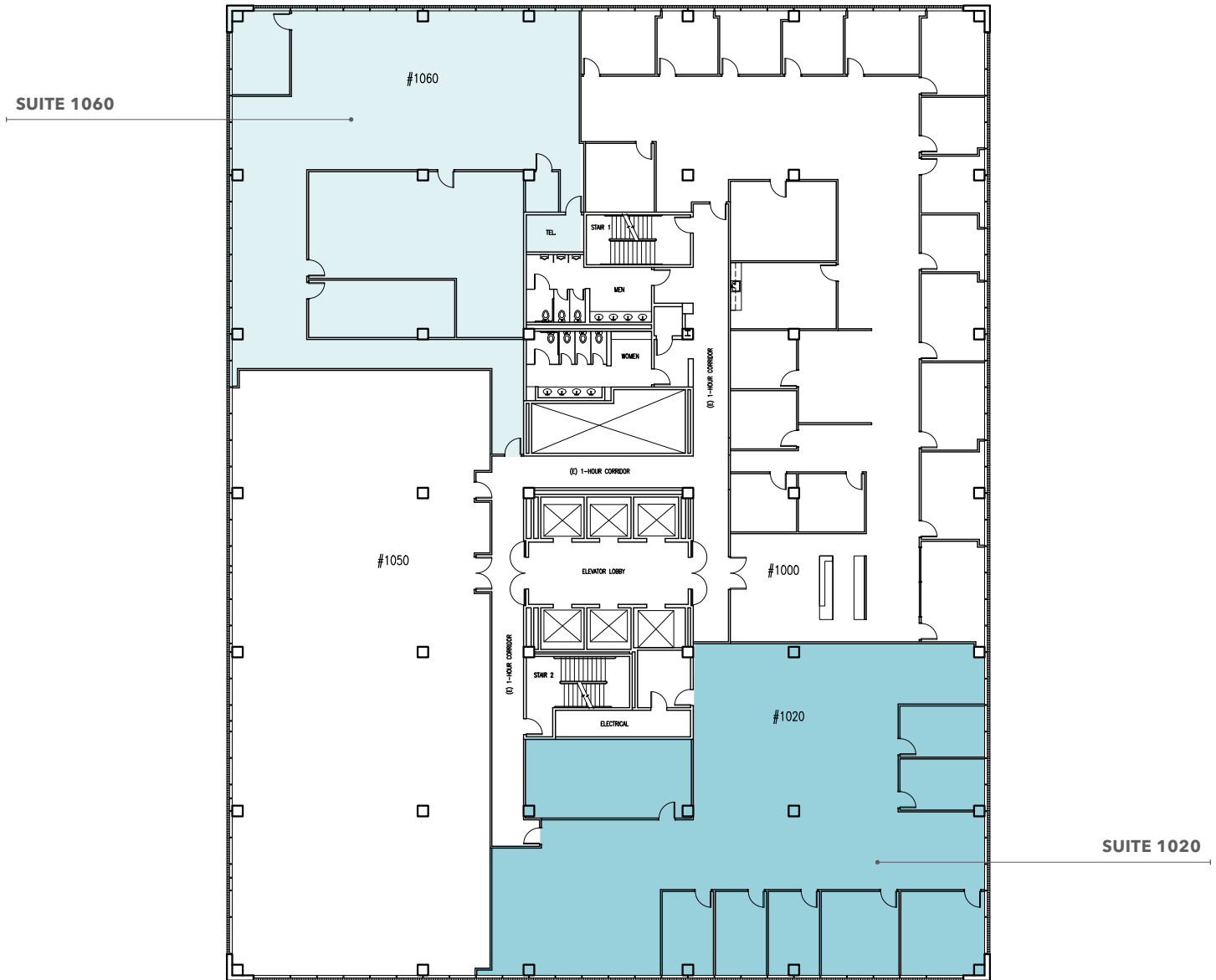


**FOR LEASE**

# 1055 Wilshire Boulevard

LOS ANGELES, CA 90017

## Suites 1020 & 1060



**JOHN ANTHONY, SIOR**

213.225.7218

[john.anthony@kidder.com](mailto:john.anthony@kidder.com)

LIC N° 01226464

**CHRISTOPHER STECK, CCIM**

213.225.7231

[christopher.steck@kidder.com](mailto:christopher.steck@kidder.com)

LIC N° 01841338

**CHRISTOPHER GIORDANO**

213.225.7219

[christopher.giordano@kidder.com](mailto:christopher.giordano@kidder.com)

LIC N° 01928706

**KIDDER.COM**

This information supplied herein is from sources we deem reliable. It is provided without any representation, warranty, or guarantee, expressed or implied as to its accuracy. Prospective Buyer or Tenant should conduct an independent investigation and verification of all matters deemed to be material, including, but not limited to, statements of income and expenses. Consult your attorney, accountant, or other professional advisor.



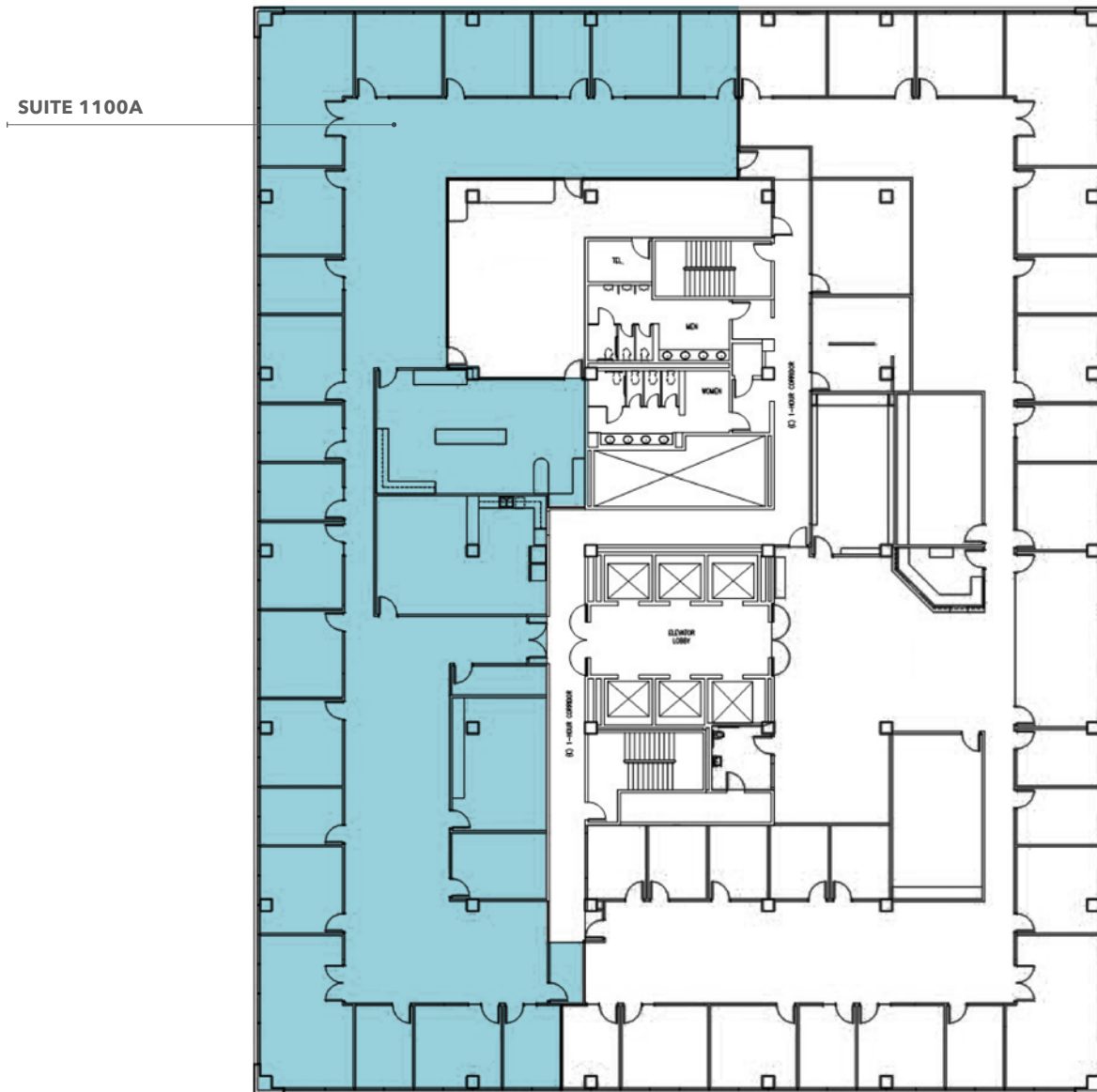


**FOR LEASE**

# 1055 Wilshire Boulevard

LOS ANGELES, CA 90017

## Suite 1100A



**JOHN ANTHONY, SIOR**

213.225.7218

[john.anthony@kidder.com](mailto:john.anthony@kidder.com)

LIC N° 01226464

**CHRISTOPHER STECK, CCIM**

213.225.7231

[christopher.steck@kidder.com](mailto:christopher.steck@kidder.com)

LIC N° 01841338

**CHRISTOPHER GIORDANO**

213.225.7219

[christopher.giordano@kidder.com](mailto:christopher.giordano@kidder.com)

LIC N° 01928706

**KIDDER.COM**

This information supplied herein is from sources we deem reliable. It is provided without any representation, warranty, or guarantee, expressed or implied as to its accuracy. Prospective Buyer or Tenant should conduct an independent investigation and verification of all matters deemed to be material, including, but not limited to, statements of income and expenses. Consult your attorney, accountant, or other professional advisor.



**FOR LEASE**

# 1055 Wilshire Boulevard

LOS ANGELES, CA 90017

## Suite 1400, 1460 & 1480



**JOHN ANTHONY, SIOR**  
213.225.7218  
[john.anthony@kidder.com](mailto:john.anthony@kidder.com)  
LIC N° 01226464

**CHRISTOPHER STECK, CCIM**  
213.225.7231  
[christopher.steck@kidder.com](mailto:christopher.steck@kidder.com)  
LIC N° 01841338

**CHRISTOPHER GIORDANO**  
213.225.7219  
[christopher.giordano@kidder.com](mailto:christopher.giordano@kidder.com)  
LIC N° 01928706

**KIDDER.COM**

This information supplied herein is from sources we deem reliable. It is provided without any representation, warranty, or guarantee, expressed or implied as to its accuracy. Prospective Buyer or Tenant should conduct an independent investigation and verification of all matters deemed to be material, including, but not limited to, statements of income and expenses. Consult your attorney, accountant, or other professional advisor.

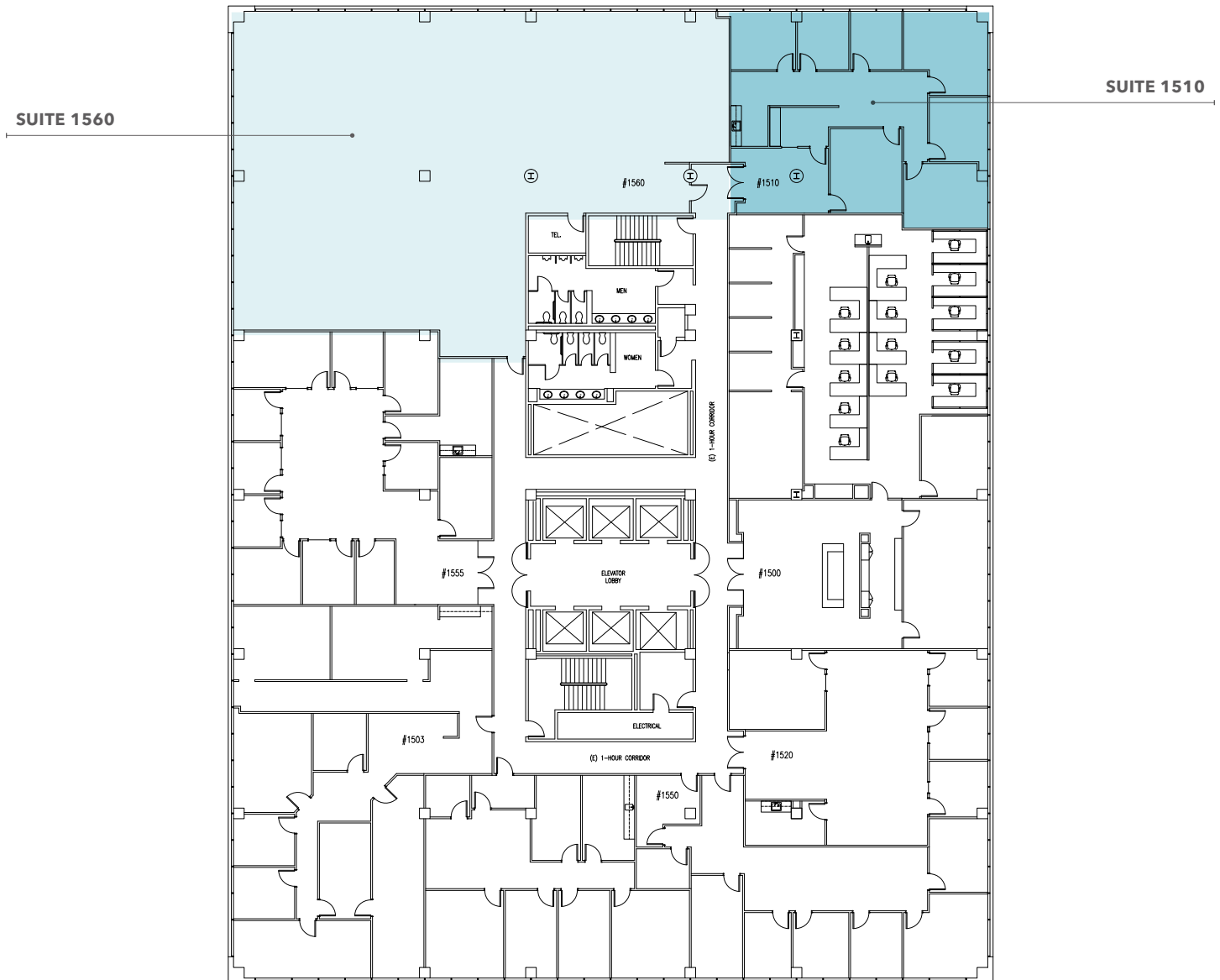


**FOR LEASE**

# 1055 Wilshire Boulevard

LOS ANGELES, CA 90017

## Suite 1510 & 1560



**JOHN ANTHONY, SIOR**

213.225.7218

[john.anthony@kidder.com](mailto:john.anthony@kidder.com)

LIC N° 01226464

**CHRISTOPHER STECK, CCIM**

213.225.7231

[christopher.steck@kidder.com](mailto:christopher.steck@kidder.com)

LIC N° 01841338

**CHRISTOPHER GIORDANO**

213.225.7219

[christopher.giordano@kidder.com](mailto:christopher.giordano@kidder.com)

LIC N° 01928706

**KIDDER.COM**

This information supplied herein is from sources we deem reliable. It is provided without any representation, warranty, or guarantee, expressed or implied as to its accuracy. Prospective Buyer or Tenant should conduct an independent investigation and verification of all matters deemed to be material, including, but not limited to, statements of income and expenses. Consult your attorney, accountant, or other professional advisor.



FOR LEASE

# 1055 Wilshire Boulevard

LOS ANGELES, CA 90017

## Suite 1705, 1708 & 1760



**JOHN ANTHONY, SIOR**

213.225.7218

[john.anthony@kidder.com](mailto:john.anthony@kidder.com)

LIC N° 01226464

**CHRISTOPHER STECK, CCIM**

213.225.7231

[christopher.steck@kidder.com](mailto:christopher.steck@kidder.com)

LIC N° 01841338

**CHRISTOPHER GIORDANO**

213.225.7219

[christopher.giordano@kidder.com](mailto:christopher.giordano@kidder.com)

LIC N° 01928706

**KIDDER.COM**

This information supplied herein is from sources we deem reliable. It is provided without any representation, warranty, or guarantee, expressed or implied as to its accuracy. Prospective Buyer or Tenant should conduct an independent investigation and verification of all matters deemed to be material, including, but not limited to, statements of income and expenses. Consult your attorney, accountant, or other professional advisor.



**FOR LEASE**

# 1055 Wilshire Boulevard

LOS ANGELES, CA 90017

## Suites 1800 & 1860



**JOHN ANTHONY, SIOR**

213.225.7218

[john.anthony@kidder.com](mailto:john.anthony@kidder.com)

LIC N° 01226464

**CHRISTOPHER STECK, CCIM**

213.225.7231

[christopher.steck@kidder.com](mailto:christopher.steck@kidder.com)

LIC N° 01841338

**CHRISTOPHER GIORDANO**

213.225.7219

[christopher.giordano@kidder.com](mailto:christopher.giordano@kidder.com)

LIC N° 01928706

**KIDDER.COM**

This information supplied herein is from sources we deem reliable. It is provided without any representation, warranty, or guarantee, expressed or implied as to its accuracy. Prospective Buyer or Tenant should conduct an independent investigation and verification of all matters deemed to be material, including, but not limited to, statements of income and expenses. Consult your attorney, accountant, or other professional advisor.

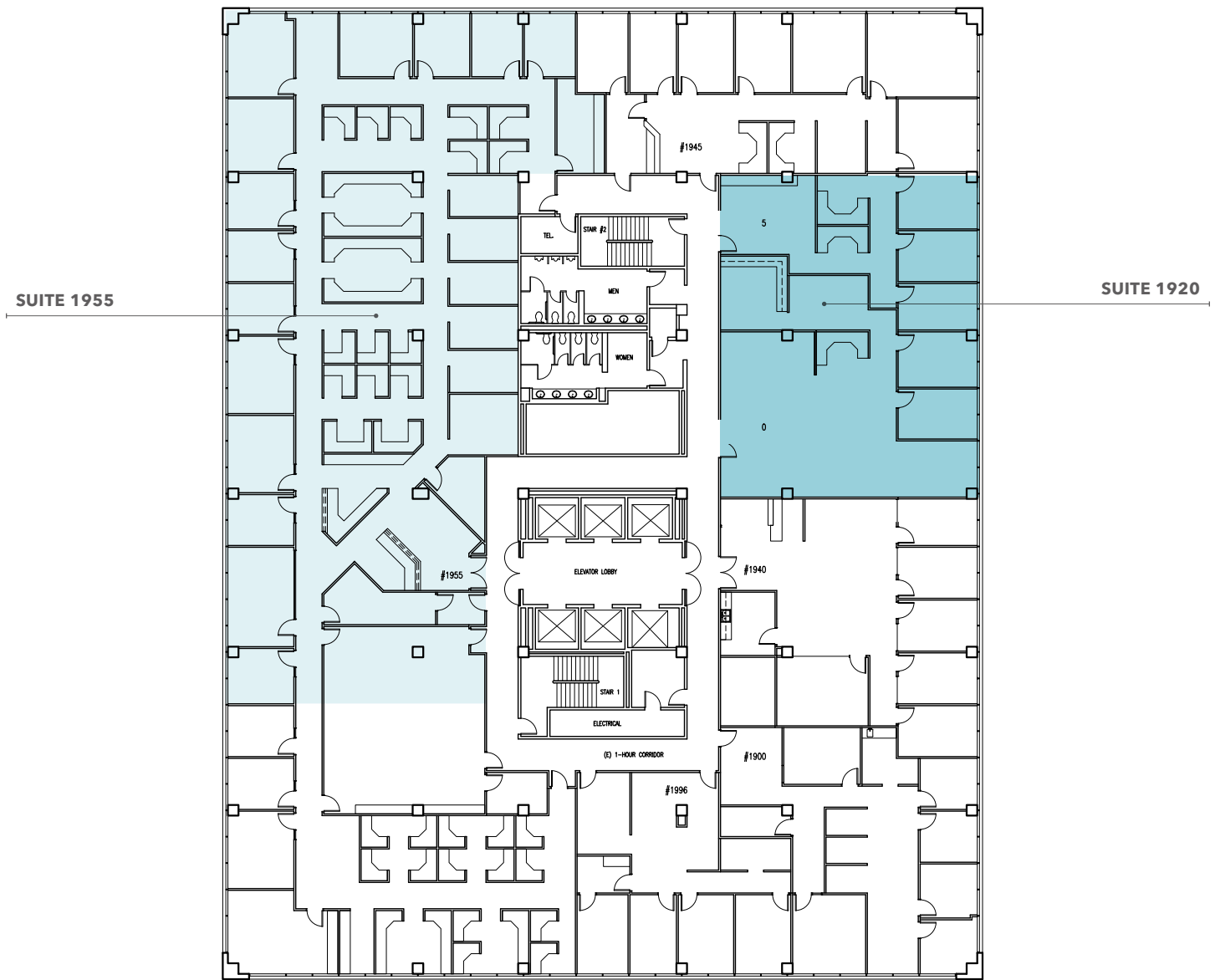


FOR LEASE

# 1055 Wilshire Boulevard

LOS ANGELES, CA 90017

## Suites 1920 & 1955



**JOHN ANTHONY, SIOR**

213.225.7218

[john.anthony@kidder.com](mailto:john.anthony@kidder.com)

LIC N° 01226464

**CHRISTOPHER STECK, CCIM**

213.225.7231

[christopher.steck@kidder.com](mailto:christopher.steck@kidder.com)

LIC N° 01841338

**CHRISTOPHER GIORDANO**

213.225.7219

[christopher.giordano@kidder.com](mailto:christopher.giordano@kidder.com)

LIC N° 01928706

**KIDDER.COM**

This information supplied herein is from sources we deem reliable. It is provided without any representation, warranty, or guarantee, expressed or implied as to its accuracy. Prospective Buyer or Tenant should conduct an independent investigation and verification of all matters deemed to be material, including, but not limited to, statements of income and expenses. Consult your attorney, accountant, or other professional advisor.

