

**ADAMS**  
PROPERTY GROUP

# NEW FLEX FROM \$24 NNN BREAKING GROUND NOW!!

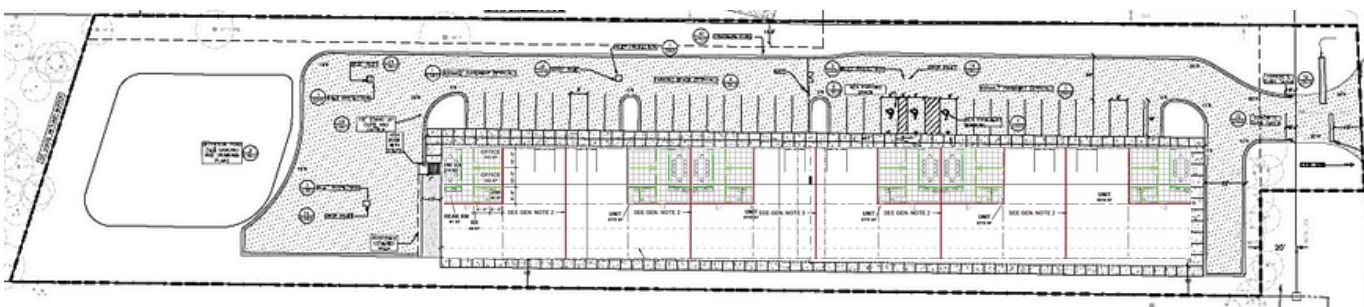
2820 Clements Ferry Rd  
Charleston, SC

## PROPERTY HIGHLIGHTS

Located just over 300 yards from I-526 on ramp, avoid gridlock with ease of access to high growth areas and your customers. This brand new space will be move in ready. Each unit includes conditioned office area equipped with two ADA restrooms, a conference room, two private offices and a 10x10 roll up door.

AVAILABLE SF	3930-4025 SF+/- Building is 24K+/- SF	COUNTY	Berkeley County
ZONING	GENERAL COMMERCIAL <a href="#">LINK TO ZONING</a>	CLEAR HEIGHT	18'3" in front. Ceiling slopes in rear to 16'
PARKING	35 spaces with a truck turn area for freight vehicles	COLUMNS/SLAB	Clear span, 6" slab

Proposed lease plan



Clements Ferry Rd



**Casey Lowery**

📞 843.941.4022

✉ clowery@adamspropgroup.com



**Linnell Ray**

📞 843.941.4001, ext. 120

✉ lray@adamspropgroup.com

Disclaimer - The information contained herein is deemed reliable but should be verified and is not warranted by Adams Property Group, LLC.