

FOR LEASE | OFFICE

West End Area Office Space

5881 Cedar Lake Road S, St. Louis Park, MN 55416



Located in the West End area of St. Louis Park, these offices are within walking distance of many amenities, including restaurants, shops, fitness facilities and hotels. The Cedar Lake Bike Trail is steps from the door and is connected to more than a dozen other trails throughout the Twin Cities.

Property Features

- 5891- 1st floor has 5 individual offices with shared waiting area
- Overlooking wooded area and central patio
- Shared access to upgraded, high-finish conference room, beverage station, lounge area, patio and putting green
- Access to ample shared parking, with potential for reserved spaces

Contact Us

ERIC DUEHOLM

Partner



651.621.2550

eric@terracegroupllc.com

BEN BRUNO

Brokerage Services



651.621.2563

ben@terracegroupllc.com

TONY ROSSATO

Brokerage Services



651.621.2507

tony@terracegroupllc.com

Full Property Information at:
officewestend.com

FOR LEASE | OFFICE
West End Area Office Space
 5881 Cedar Lake Road S, St. Louis Park, MN 55416



75/100
Walk Score



32/100
Transit Score



83/100
Bike Score

ERIC DUEHOLM
Partner
651.621.2550
eric@terracegroupllc.com

BEN BRUNO
Brokerage Services
651.621.2563
ben@terracegroupllc.com

TONY ROSSATO
Brokerage Services
651.621.2507
tony@terracegroupllc.com

Full Property Information at:
officewestend.com

FOR LEASE | OFFICE
West End Area Office Space
5881 Cedar Lake Road S, St. Louis Park, MN 55416



ERIC DUEHOLM
Partner
651.621.2550
eric@terracegroupllc.com

BEN BRUNO
Brokerage Services
651.621.2563
ben@terracegroupllc.com

TONY ROSSATO
Brokerage Services
651.621.2507
tony@terracegroupllc.com

Full Property Information at:
officewestend.com

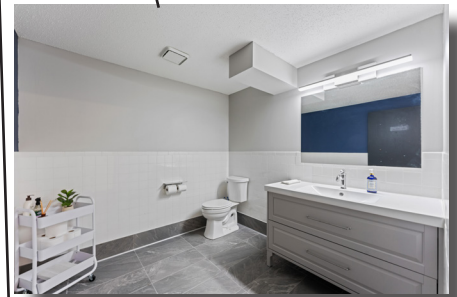
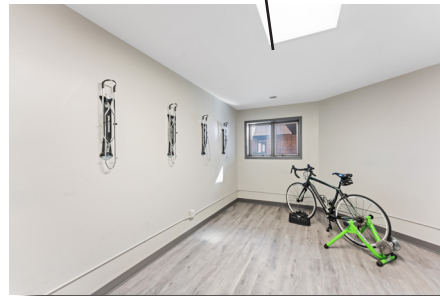
FOR LEASE | OFFICE
West End Area Office Space
5881 Cedar Lake Road S, St. Louis Park, MN 55416



Common Area

Access to Common Conference Room, Kitchenette, Lounge, Bike Storage, Patio and Putting Green

PATIO WITH
PUTTING GREEN



ERIC DUEHOLM
Partner
651.621.2550
eric@terracegrouppllc.com

BEN BRUNO
Brokerage Services
651.621.2563
ben@terracegrouppllc.com

TONY ROSSATO
Brokerage Services
651.621.2507
tony@terracegrouppllc.com

Full Property Information at:
officewestend.com

FOR LEASE | OFFICE
West End Area Office Space
5881 Cedar Lake Road S, St. Louis Park, MN 55416



Common Area from South with
Glass Conference Room

Patio and Putting Green



Common Area Seating, Fireplace
and Patio



ERIC DUEHOLM
Partner
651.621.2550
eric@terracegroupllc.com

BEN BRUNO
Brokerage Services
651.621.2563
ben@terracegroupllc.com

TONY ROSSATO
Brokerage Services
651.621.2507
tony@terracegroupllc.com

Full Property Information at:
officewestend.com

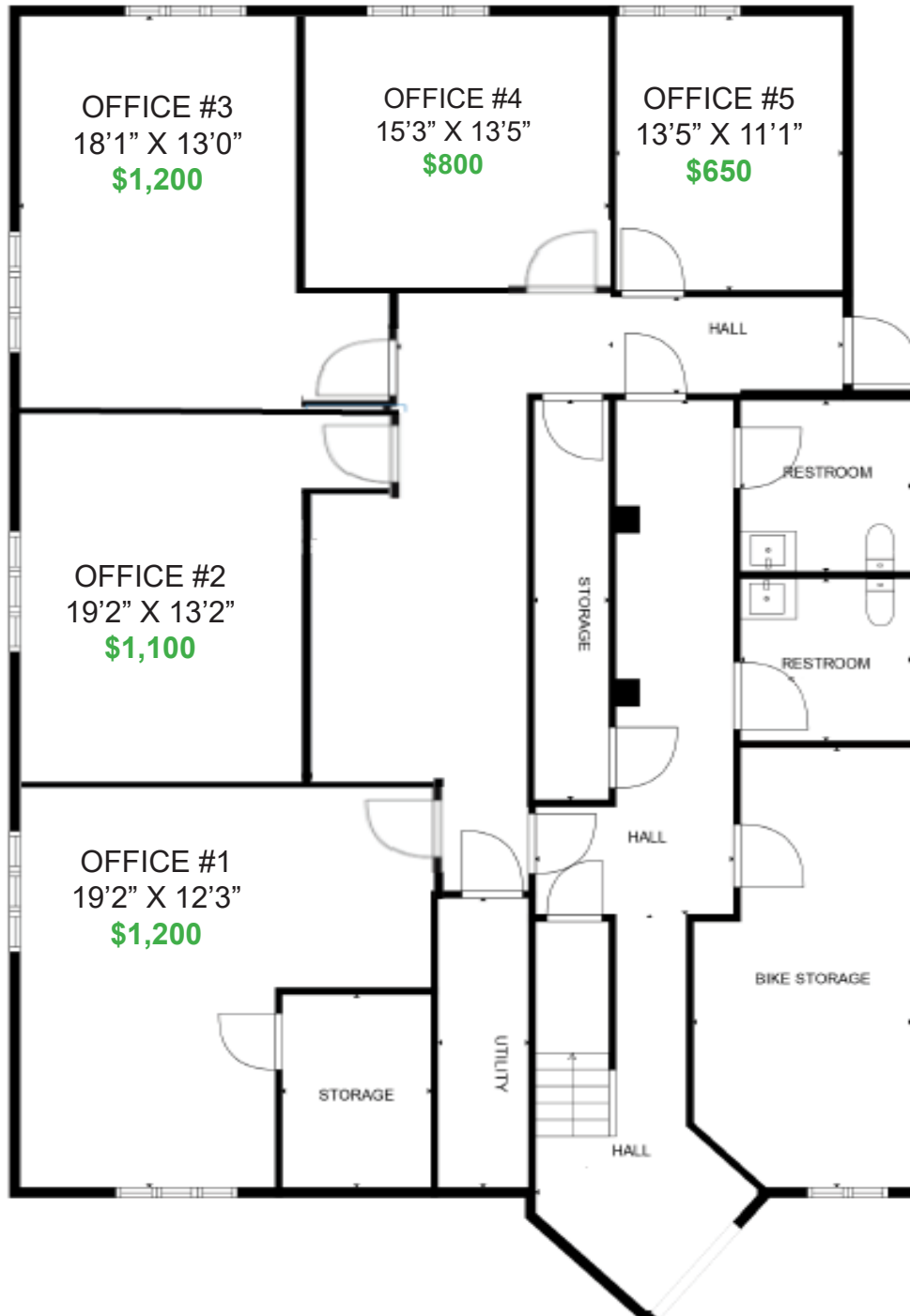
FOR LEASE | OFFICE

West End Area Office Space

5881 Cedar Lake Road S, St. Louis Park, MN 55416



5881 - First Floor



ERIC DUEHOLM

Partner

651.621.2550

eric@terracegroupllc.com

BEN BRUNO

Brokerage Services

651.621.2563

ben@terracegroupllc.com

TONY ROSSATO

Brokerage Services

651.621.2507

tony@terracegroupllc.com

Full Property Information at:
officewestend.com

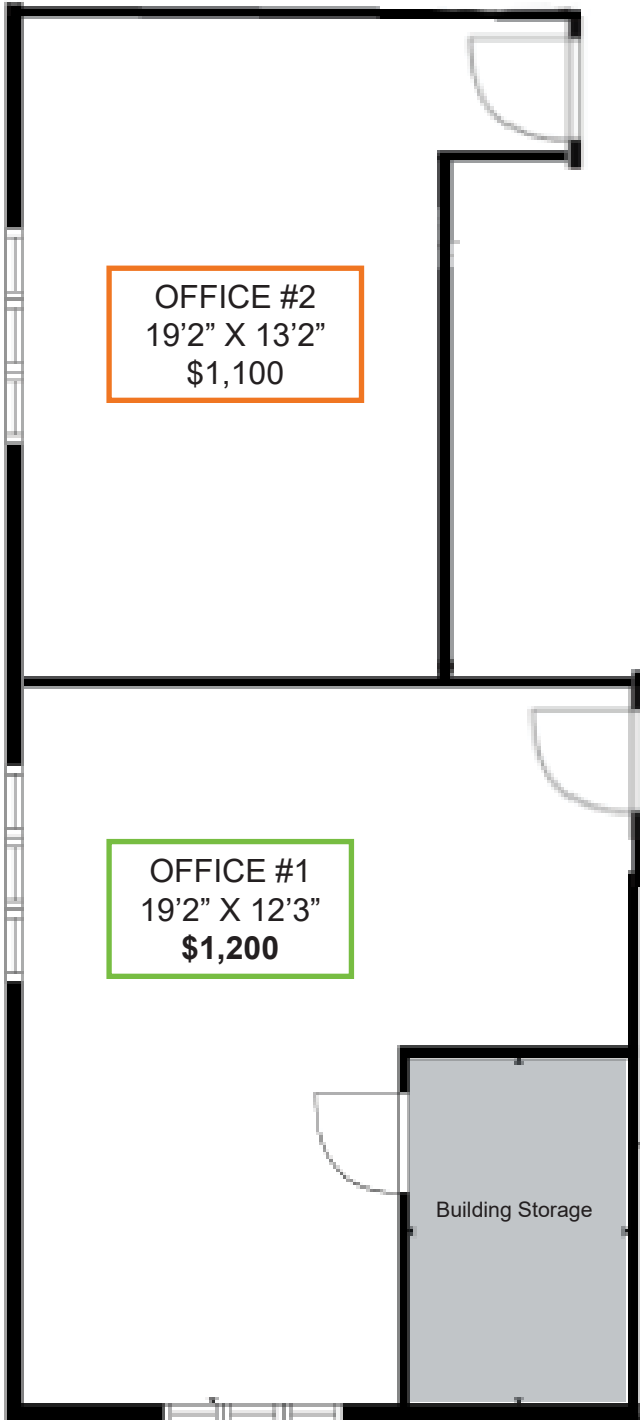
FOR LEASE | OFFICE

West End Area Office Space

5881 Cedar Lake Road S, St. Louis Park, MN 55416



5881 - First Floor



ERIC DUEHOLM

Partner

651.621.2550

eric@terracegrouppllc.com

BEN BRUNO

Brokerage Services

651.621.2563

ben@terracegrouppllc.com

TONY ROSSATO

Brokerage Services

651.621.2507

tony@terracegrouppllc.com

Full Property Information at:
officewestend.com

FOR LEASE | OFFICE

West End Area Office Space

5881 Cedar Lake Road S, St. Louis Park, MN 55416



Information is deemed reliable; however, no warranty or representation is made as to its accuracy or completeness. Property is subject to price change, prior sale or lease, and withdrawal from the market, all without notice.

ERIC DUEHOLM

Partner

651.621.2550

eric@terracegrouppllc.com

BEN BRUNO

Brokerage Services

651.621.2563

ben@terracegrouppllc.com

TONY ROSSATO

Brokerage Services

651.621.2507

tony@terracegrouppllc.com

Full Property Information at:
officewestend.com