

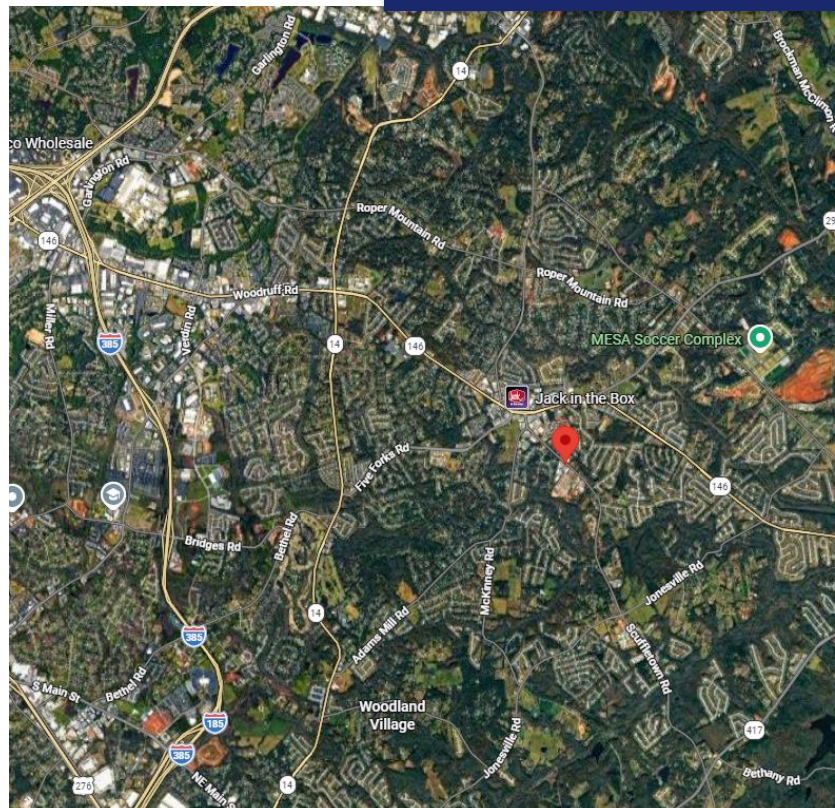


Great Location In High Traffic Five Forks Area

FOR LEASE:
\$31.00/SF NNN

409 Scuffletown Road

- 4 Suites available for lease (building layout and details on next page)
- Conveniently located new construction close to Woodruff Rd in prime Five Forks area
- Ample on-site parking (94 spaces)
- Anchor tenants – Five Forks Athletics, Creekside Veterinary Care
- Zoned FRD, Greenville County
- Suites to be provided in warm vanilla shell condition with 1 ADA bathroom



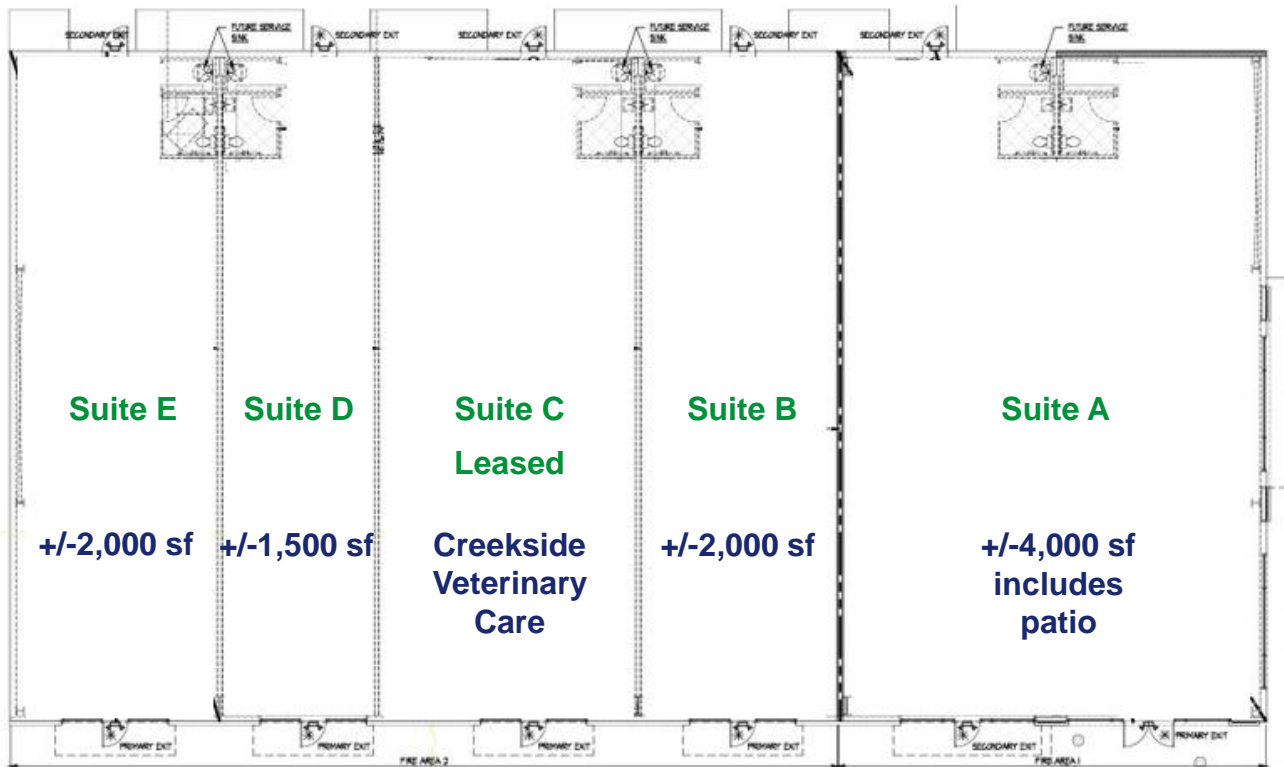
CONTACT

BOBBY HINES | (864) 313-4815
BOBBYHINES@SPENCERHINES.COM

EVAN HINES WILKINS | (864) 616-4900
EVANHINES@SPENCERHINES.COM

No warranty or representation, expressed or implied, is made to the accuracy of the information contained herein, and the same is submitted subject to errors, omissions, change of price, rental or other conditions, imposed by the principles.

Building Layout



Suite A

- +/-4,000 sf
- Grease trap installed
- 400amp service
- 10 ton HVAC installed
- 2 ADA restrooms

Suite B

- +/-2,000 sf
- 5 ton HVAC
- 200 amp service

Suite D

- +/-1,500 sf
- 5 ton HVAC
- 200 amp service

Suite E

- +/-2,000 sf
- 5 ton HVAC
- 200 amp service

- Tenant responsible for distribution of ductwork & electrical
- Water & sewer lines are stubbed and capped
- Concrete floors

CONTACT

BOBBY HINES | (864) 313-4815
BOBBYHINES@SPENCERHINES.COM

EVAN HINES WILKINS | (864) 616-4900
EVANHINES@SPENCERHINES.COM