

Properties for Sale

1 14836 Ramona Blvd, Baldwin Park, CA 91706



Property Details

| | |
|------------------------|-------------|
| Price | \$6,400,000 |
| No. Unit | 0 |
| Rentable Building Area | 6,400 SF |
| Total Lot Size | 0.35 AC |
| Property Type | Industrial |
| No. Stories | 1 |
| Building Class | B |
| Year Built | 1980 |
| Status | Active |

Broker Information



RE/MAX
UNIVERSAL

Henry Loh

(626) 975-8702

Property Notes

Sale Notes

3 units on a lot industrial building within City of Baldwin Park Cannabis permitted area. Total 6,400 sq ft warehouse space on a 15,246 sq ft gated lot. 3 ground loading doors, 3 restrooms, 2 electric meters, 3 gas meters.

Highlights

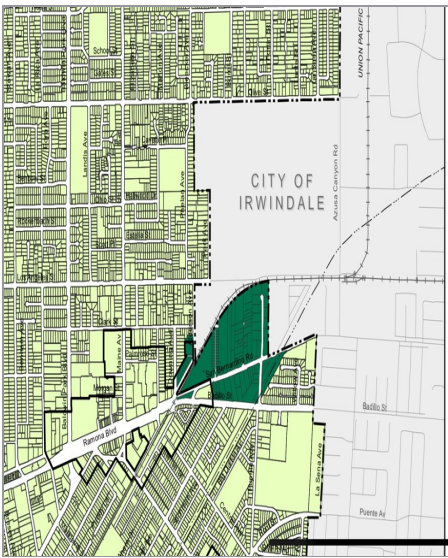
Cannabis permitted zone. 3 units warehouse with 3 ground loading door.

15,246 sq ft gated lot.

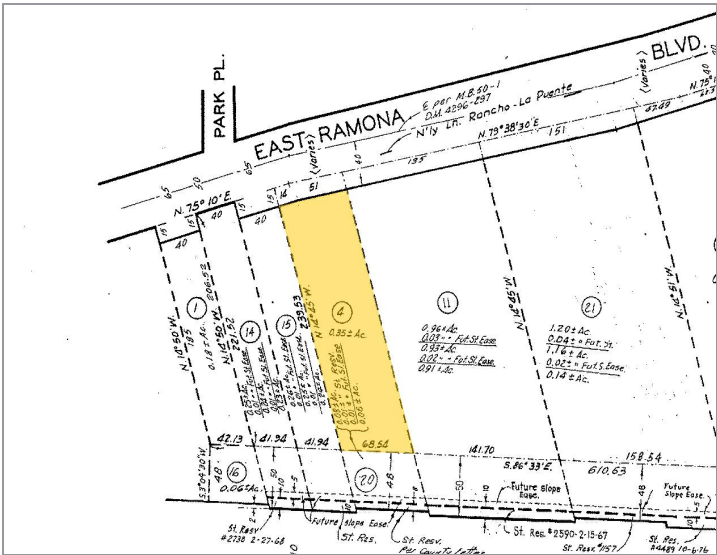
3 restrooms. 2 electric meters and 3 gas meters.

Photos

Zone Map

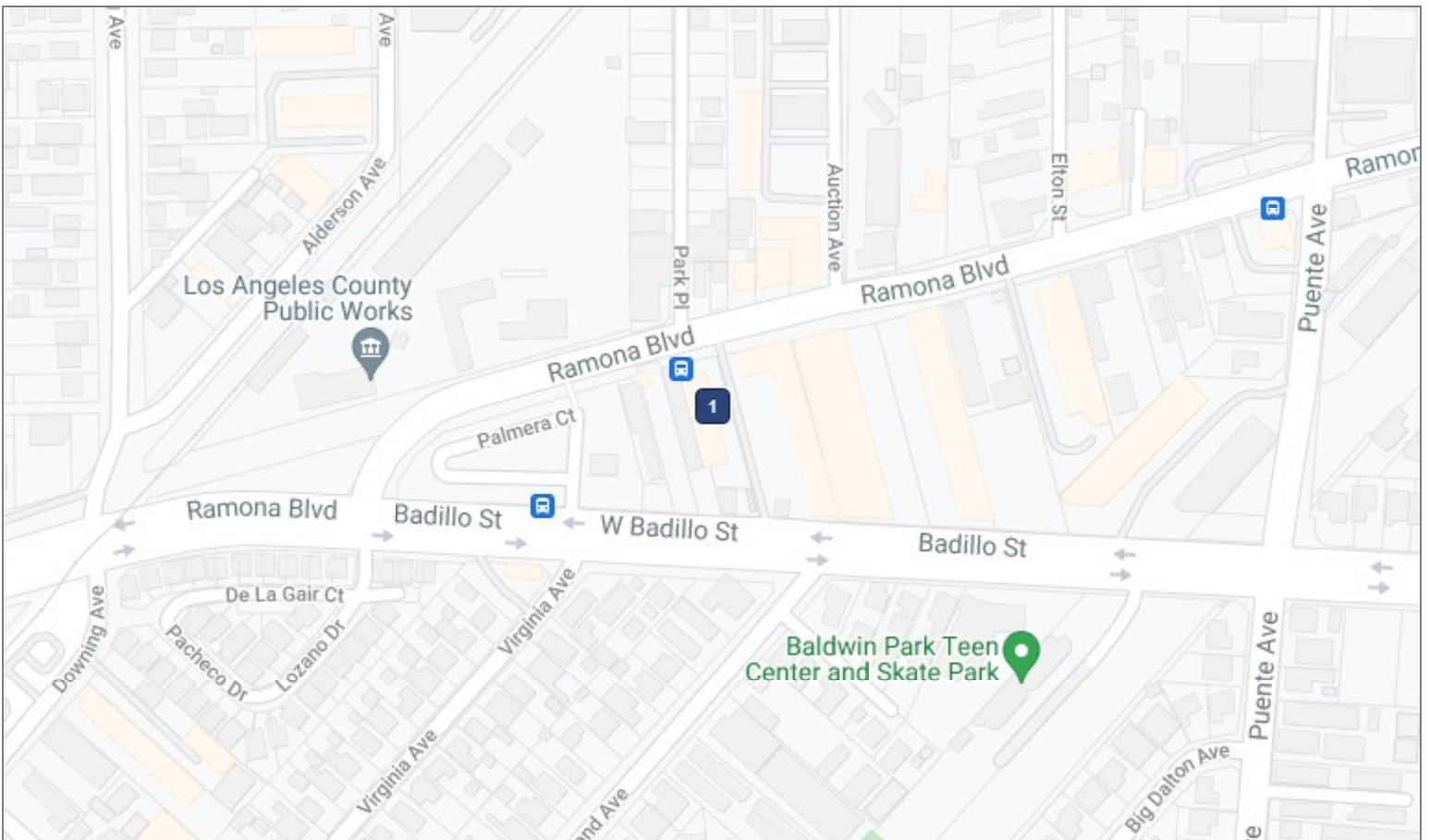


Cannabis Permitted Area
 (Industrial (I) &
 Industrial Commercial (I-C) Zones)





Map



1 14836 Ramona Blvd
Baldwin Park, CA 91706